

DESERT OAK HOMES

POSTLEVEY SCHEIDT & JERMAN ENGINEERING PLANNING SURVEYING CONSTRUCTION SERVICES

901 N. Green Valley Pkwy. Henderson, Nevada 89014 Telephone: 702.263.7275 Fax: 702.263.7275

DESERT OAK HOMES UNIT #1

TENAYA WAY PLAN & PROFILE IMPROVEMENTS

STAMPEDE ESTATES UNIT #1 DESERT OAK HOMES

SCALE: 1" = 40'

PROJECT NO: 51556

CHECKED BY: ER

DESIGNED BY: ENR

DATE: 06/23/98

07/15/98

06/04/98

06/23/98

51556

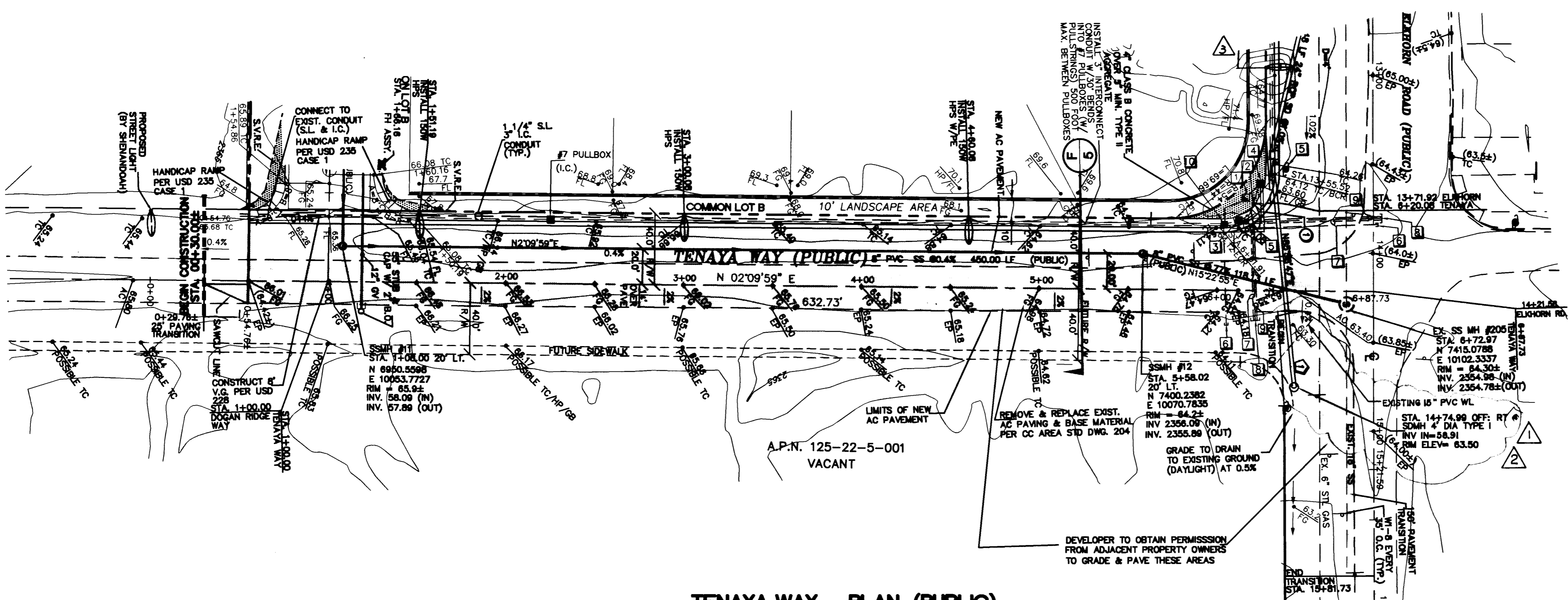
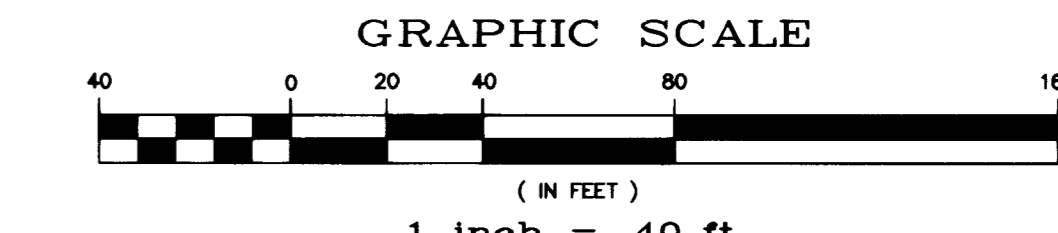
10 of 12 SHEETS

DRAWING NO. 1074-4581-1

REVISION

BY

DATE



- LEGEND:**
- 100.00 DESIGN ELEVATION
 - (100.00) EXISTING ELEVATION
 - FL FLOWLINE
 - TC TOP OF CURB
 - FG FINISH GRADE
 - GB GRADE BREAK
 - FLOW LINE
 - EXISTING FIRE HYDRANT ASSY
 - RETAINING WALL
 - BLOCK WALL
 - WL --- WATERLINE (EXISTING)
 - WL --- WATERLINE (PROPOSED)
 - SS --- SEWERLINE (EXISTING)
 - SS --- SEWERLINE (PROPOSED)
 - M --- MATCH LINE
 - WATER VALVE
 - SEWER MANHOLE (48")
 - FIRE HYDRANT ASSEMBLY
 - BLOW-OFF ASSEMBLY
 - NEW PAVEMENT
 - PAVEMENT REPLACED

CURVE TABLE

No.	RADIUS	DELTA	LENGTH	TANGENT
C1	20.00	90°00'00"	31.42	20.00
C2	25.00	84°10'00"	38.26	25.00
C3	30.00	87°42'00"	47.56	30.00
C4	100.00	18°11'42"	31.78	18.01
C5	100.00	18°11'42"	31.78	18.01

TENAYA WAY - PLAN (PUBLIC)

HORIZONTAL SCALE: 1" = 40'

PROJECT BENCHMARK

CITY LAS VEGAS BENCHMARK #48
 ST. 1LV9022W6, RIVET & PLATE ON POWER - TRANS PAD
 500' EAST OF BUFFALO DR. @ 7535 W. DEER SPRINGS RD.
 ELEV. = 727.8646 M. (NAVD 88)
 ELEV. = 2385.6000 FT.

BASIS OF BEARING

SOUTH 88°32'51" EAST - BEING THE NORTH LINE OF THE NORTHWEST QUARTER (NW 1/4) OF SECTION 22, TOWNSHIP 19 SOUTH, RANGE 60 EAST, M.D.M., CLARK COUNTY, NEVADA AS SHOWN IN BOOK 74 OF PLATS, PAGE 53 OFFICIAL RECORDS, CLARK COUNTY, NEVADA

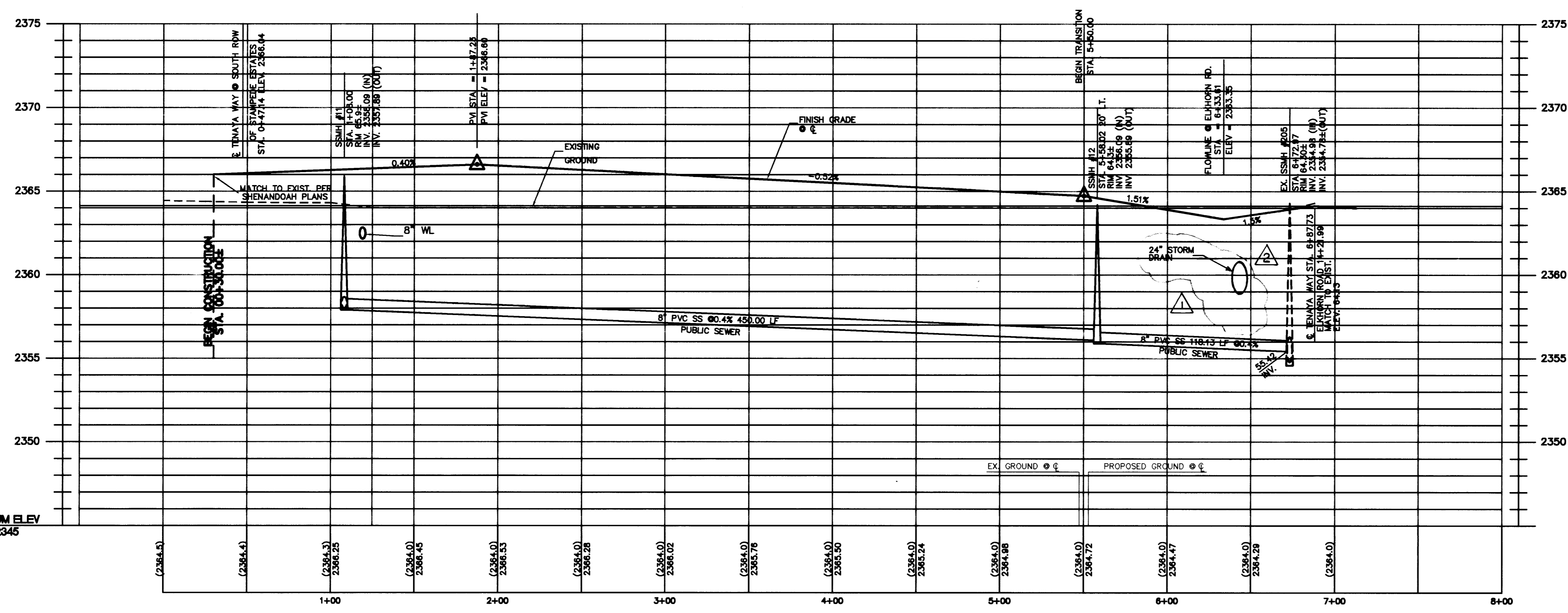
APPROVED FOR CONSTRUCTION

Bonnie Cuff 3-09-99
 LAS VEGAS VALLEY WATER DISTRICT DATE

- NOTE:
- ON-SITE STREETS ARE PRIVATE WITH PUBLIC CITY OF LAS VEGAS SEWER EASEMENT.
 - DEVELOPER TO COORDINATE W/UTILITY FOR RELOCATION OF EXIST. POWER POLES. 36" CLEARANCE IF POWER POLE IN SIDEWALK

TRAFFIC LUMINAIRES ARE TO BE WIRED CONTINUOUSLY TO METER PEDESTAL USING 2-#10 STR. & 1-#8 GREEN T.H.W. WIRE 10' OF BLACK SHALL BE LEFT IN POLE. EACH LUMINAIRE SHALL BE FUSED INDIVIDUALLY WITH A 10 AMP FUSE IN BOTTOM OF METER PEDESTAL.

NOTICE TO CONTRACTOR
 EXISTING UTILITIES SHOWN HEREON ARE APPROXIMATE ONLY. IT SHALL BE THE CONTRACTOR'S RESPONSIBILITY TO DETERMINE THE EXACT HORIZONTAL AND VERTICAL LOCATION OF ALL EXISTING UNDERGROUND UTILITIES PRIOR TO COMMENCING CONSTRUCTION. NO REPRESENTATION IS MADE THAT ALL EXISTING UTILITIES ARE SHOWN HEREON. THE ENGINEER ASSUMES NO RESPONSIBILITY FOR UTILITIES NOT SHOWN OR UTILITIES NOT SHOWN IN THEIR PROPER LOCATION.

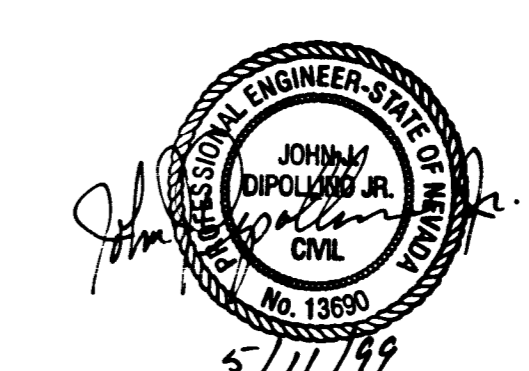


TENAYA WAY - PROFILE

HORIZONTAL SCALE: 1" = 40'

VERTICAL SCALE: 1" = 4'

- CONSTRUCTION NOTES**
- 200 AMP 240V PAD MOUNT SERVICE WITH
 - 2 POLE 60 AMP C.B.
 - 1 POLE 15 AMP C.B.
 - 1 POLE 40 AMP C.B.
 - 1 POLE 60 AMP C.B.
 - 2 POLE 60 AMP CONTACTORS
 - BYPASS SWITCH PER CONTACTOR (W/PHOTOSWITCH)
 - INSTALL "L" FOUNDATION WITH XXA POLE, 400 WATT LUMINAIRE WITH 40 AMP SINGLE POLE BREAKER (TIE INTO #7 PULLBOX WITH 3" CONDUIT)
 - INTERCONNECT PB, TIE TO #7 TRAFFIC SIGNAL PULLBOX W/ 1-3" CONDUIT
 - #7 PULLBOX (TRAFFIC SIGNAL)
 - DEVELOPER TO COORDINATE W/UTILITY FOR RELOCATION OF EXIST. POWER POLES IF IN SIDEWALK PROVIDE MIN. CLEARANCE OF 3.5'
 - 2" ST. LT. CONDUIT, STUB & CAP
 - 1-3" INTERCONNECT CONDUIT
 - STUB & CAP 2-3" 5' PAST CONSTRUCTION (TRAFFIC SIGNAL)
 - 2-3" TRAFFIC SIGNAL CONDUIT
 - #5 ST. LT. PULLBOX CONNECT TO SERVICE POINT W/2-2" CONDUIT



Call before you Dig

1-800-227-2600

Call before you OVERHEAD

1-702-593-6111

NOTE

CONTRACTOR TO VERIFY LOCATION AND ELEVATION OF ALL EXISTING UNDERGROUND UTILITIES PRIOR TO CONSTRUCTION. NOTIFY THE ENGINEER OF ANY DISCREPANCIES.

13752 14174 15705 16466 16770

