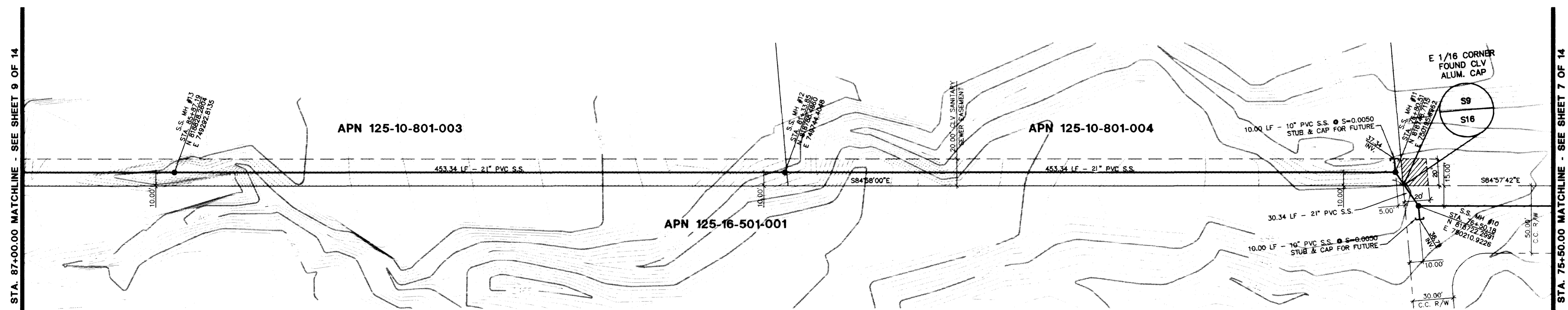
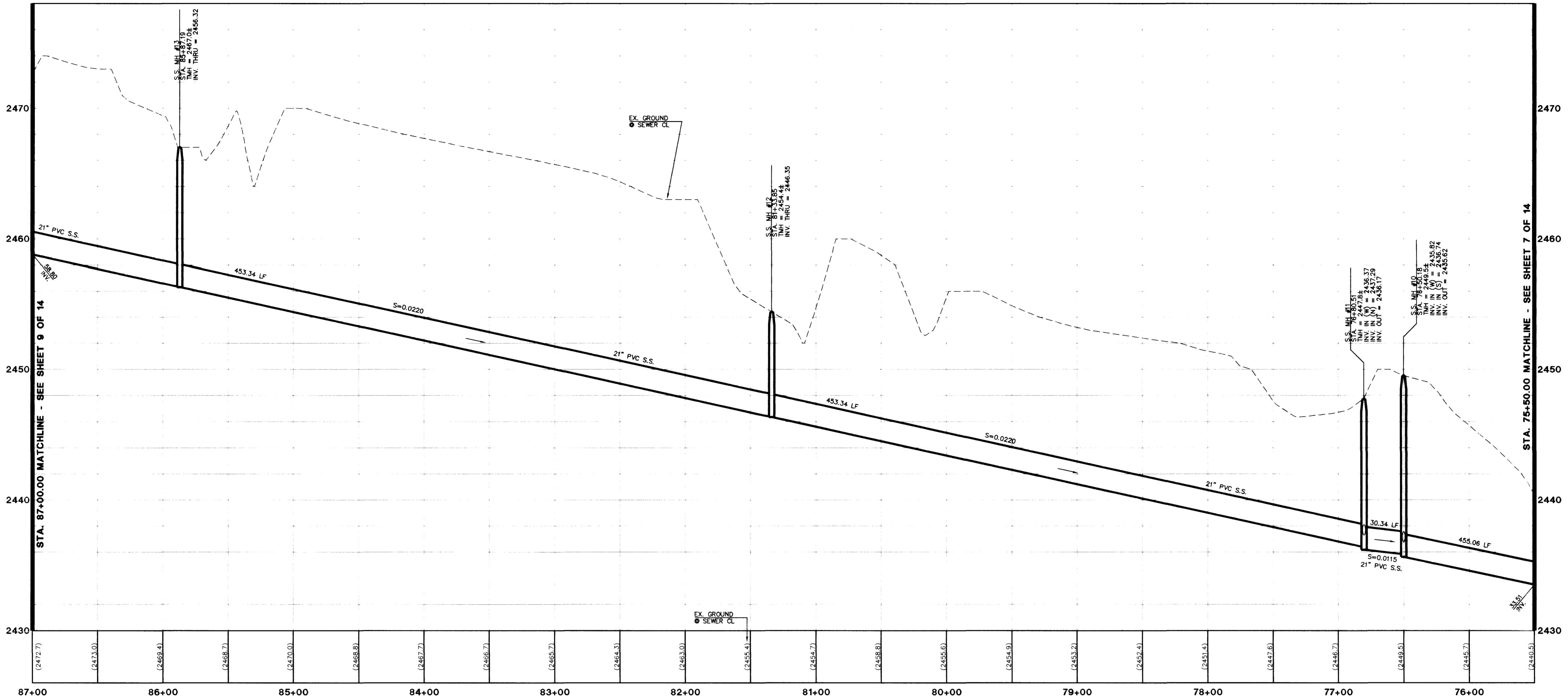


H:\CAD\LANDEV\5069\05\SWR-ALTB 07-31-1997 03:28:43 pm Plotted by : dtb



GRAND TETON DRIVE

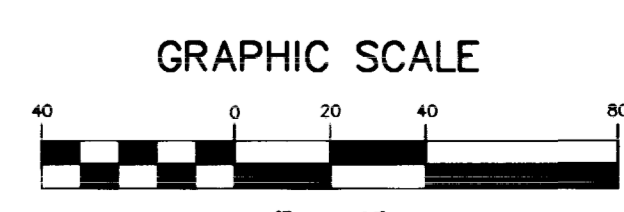
CONOUGH LANE

Call before you Dig
1-800-227-2600

Call before you OVERHEAD
1-702-593-6111

BENCHMARK
CLV BM NO. 7, STA. 1LV9017NES
BLM BRASS CAP AT DURANGO DRIVE AND GRAND TETON DRIVE.
ELEVATION = 2541.392 (NAVD 88)

NOTES :
1. ALL STATIONING IS BASED ON SEWER LENGTHS FROM MANHOLE TO MANHOLE.
2. ALL WORK PERFORMED WITHIN CLARK COUNTY RIGHT OF WAY REQUIRES A CLARK COUNTY PERMIT.



SOUTHWEST COMMUNITIES, INC.
950 BROADBENT BOULEVARD
HENDERSON, NEVADA 89014
CITY OF LAS VEGAS, NEVADA

CONSULTING ENGINEERS • PLANNERS • LAND SURVEYORS
2727 SOUTH RAINBOW BOULEVARD
LAS VEGAS, NEVADA 89102-5146 PHONE (702) 873-7550 FAX (702) 362-2997

vtn nevada

REV	DATE	BY	REVISION
1			
2			
3			
4			

PLAN AND PROFILE
GRAND TETON DRIVE
STA. 75+50.00 TO STA. 87+00.00

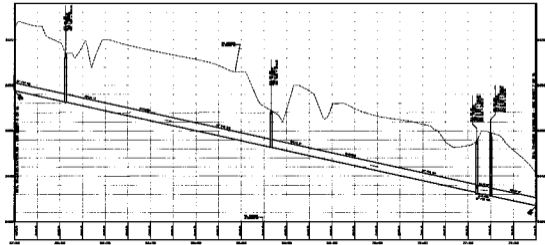
PROJECT
SPRING MOUNTAIN RANCH
(OFFSITE SEWER - ALTERNATE "B")

SEAL
ENGINEER - STATE REG.
THOMAS E. HAYES
No. 9426
8/1/97

WO NO. **5069**
BY **dtb**
DATE **APRIL 1997**
SCALE HORIZ. 1" = 40'
VERT. 1" = 4'
SHEET **8** OF 14 SHEETS

6510

307Y-4518-05-B



GRAND TETON DRIVE

SCALE
 1" = 40'
 OVERHEAD
 1" = 40'

LEGEND
 PROPOSED
 EXISTING
 CUTTING

NOTES
 1. ALL DIMENSIONS ARE IN FEET
 2. SEE PLAN FOR DETAILS

GRAPHIC SCALE
 0 10 20 30 40 50 60 70 80 90 100
 FEET

PROJECT NO. 10-100
 SHEET NO. 10-100-1
 CITY OF LAS VEGAS, NEVADA
 VDOT
 CONSULTING ENGINEER & LAND SURVEYOR
 1000 W. WASHINGTON AVENUE
 LAS VEGAS, NEVADA 89102-1000

PLAN AND PROFILE
 GRAND TETON DRIVE
 STA. 75+00.00 TO STA. 87+00.00
 SPRING MOUNTAIN RANCH
 APPROX. 1988 - ALTERNATE 'B'

NORTH ARROW
 DATE: 10/10/88
 DRAWN BY: J. J. [unclear]
 CHECKED BY: [unclear]
 APPROVED BY: [unclear]