

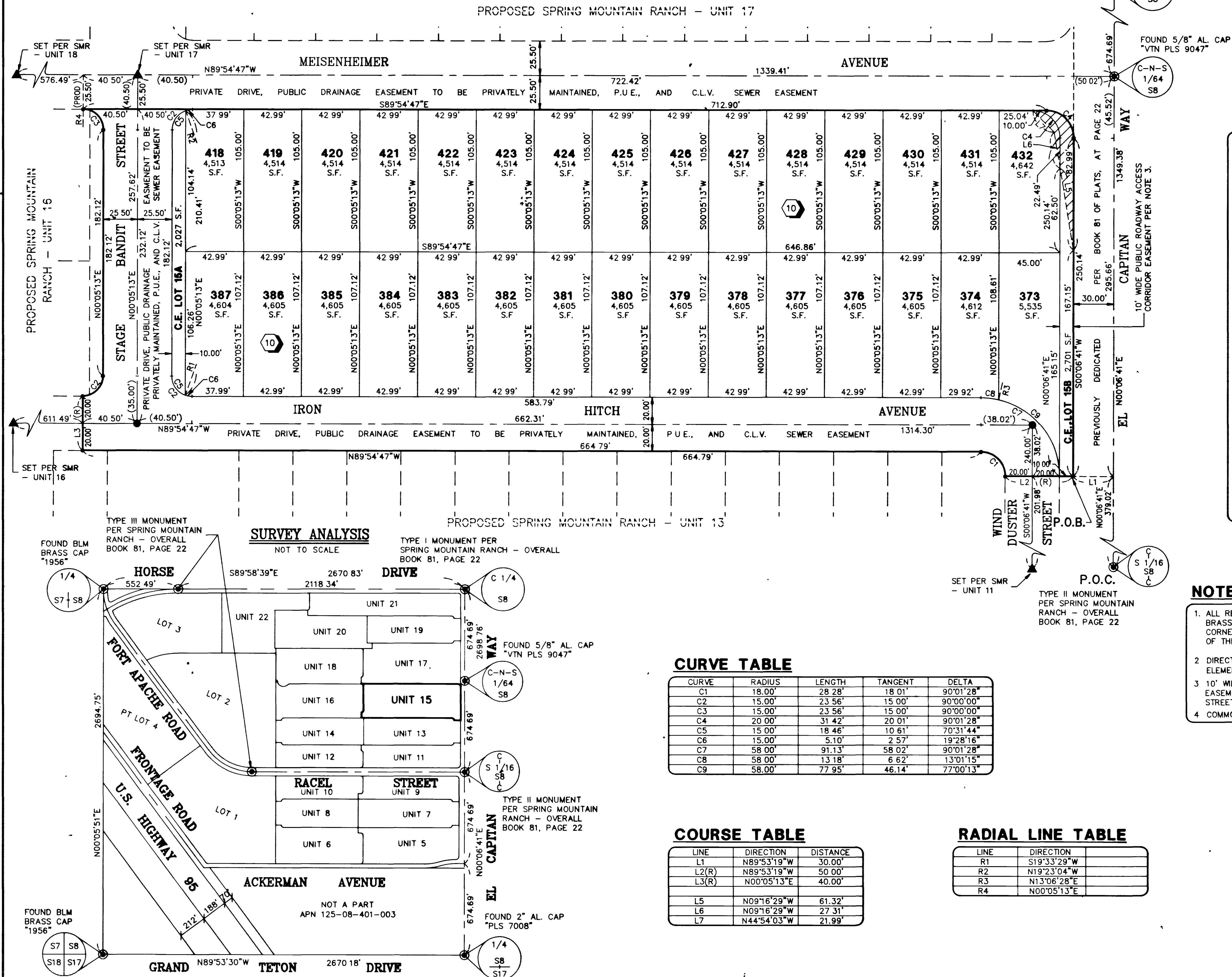
980330

02886

SPRING MOUNTAIN RANCH - UNIT 15

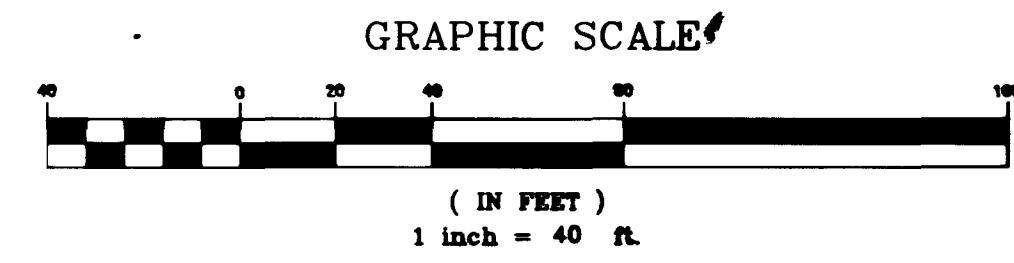
(A COMMON INTEREST COMMUNITY)
BEING A PORTION OF LOT 8 OF SPRING MOUNTAIN RANCH - OVERALL: BOOK 81 OF PLATS, PAGE 22.
LOCATED IN THE NORTH HALF (N 1/2) OF THE SOUTHWEST QUARTER (SW 1/4) OF SECTION 8,
TOWNSHIP 19 SOUTH, RANGE 60 EAST, M.D.M., CITY OF LAS VEGAS, CLARK COUNTY, NEVADA.

TYPE I MONUMENT PER
SPRING MOUNTAIN RANCH - OVERALL
BOOK 81, PAGE 22



LEGEND

- P.O.C. POINT OF COMMENCEMENT
- P.O.B. POINT OF BEGINNING
- 10' WIDE PUBLIC ROADWAY ACCESS CORRIDOR EASEMENT
- BOUNDARY LINE
- LOT LINE
- STREET CENTERLINE
- SET NAIL & BRASS TAG "VTN PLS 11449" OR SAW CUT TOP OF CURB ON THE PROLONGATION OF PROPERTY LINES PER NOTE 1 THIS SHEET.
- SET TYPE III MONUMENT AL. CAP "VTN PLS 11449"
- TYPE III MONUMENT - "VTN PLS 11449" PREVIOUSLY SET AS INDICATED.
- FOUND MONUMENT AS DESCRIBED
- 17 LOT NUMBER / RESIDENTIAL LOTS = 30 COMMON ELEMENT LOTS = 2 TOTAL LOTS = 32
- C25 CURVE NUMBER
- L22 COURSE NUMBER
- R19 RADIAL LINE NUMBER
- 13 BLOCK NUMBER
- S.F. SQUARE FEET
- (PROD.) PRODUCED LINE
- P.U.E. PUBLIC UTILITY EASEMENT
- C.L.V. CITY OF LAS VEGAS
- C.E. COMMON ELEMENT
- SMR SPRING MOUNTAIN RANCH
- (SIGHT VISIBILITY RESTRICTION EASEMENT) - THE HEIGHT OF LANDSCAPING AND / OR PHYSICAL IMPROVEMENTS WITHIN THIS AREA ARE RESTRICTED TO A MAXIMUM HEIGHT OF 30 INCHES. (TO BE PRIVATELY MAINTAINED.)
- H.O.A. HOME OWNER'S ASSOCIATION



CURVE TABLE

CURVE	RADIUS	LENGTH	TANGENT	DELTA
C1	18.00'	28.28'	18.01'	90°01'28"
C2	15.00'	23.56'	15.00'	90°00'00"
C3	15.00'	23.56'	15.00'	90°00'00"
C4	20.00'	31.42'	20.01'	90°01'28"
C5	15.00'	18.46'	10.61'	70°31'44"
C6	15.00'	5.10'	2.57'	19°28'16"
C7	58.00'	91.13'	58.02'	90°01'28"
C8	58.00'	13.18'	6.62'	13°01'15"
C9	58.00'	77.95'	46.14'	77°00'13"

COURSE TABLE

LINE	DIRECTION	DISTANCE
L1	N89°53'19"W	30.00'
L2(R)	N89°53'19"W	50.00'
L3(R)	N00°05'13"E	40.00'
L5	N09°16'29"W	61.32'
L6	N09°16'29"W	27.31'
L7	N44°54'03"W	21.99'

RADIAL LINE TABLE

LINE	DIRECTION
R1	S19°33'29"W
R2	N19°23'04"W
R3	N13°06'28"E
R4	N00°05'13"E

- NOTES:**
- ALL REAR LOT CORNERS SHALL BE SET WITH A NAIL AND BRASS TAG P.L.S. 11449 ON BLOCK WALL AND ALL FRONT OF SIDE LOT CORNERS ADJOINING RIGHT-OF-WAY SHALL BE MARKED BY THE SAW CUTTING OF THE BACK OF CURBS ON THE PROLONGATION OF THE PROPERTY LINES.
 - DIRECT VEHICULAR ACCESS TO EL CAPITAN WAY THROUGH COMMON ELEMENT LOTS FROM ABUTTING LOTS IS PROHIBITED.
 - 10' WIDE PUBLIC ROADWAY ACCESS CORRIDOR EASEMENT - TO INCLUDE EASEMENTS FOR ROADWAY, DRAINAGE, FIRE HYDRANT, TRAFFIC SIGNAL, STREET LIGHTING, WALKWAY, AND SEWER PURPOSES.
 - COMMON ELEMENT LOTS WILL BE MAINTAINED BY THE H.O.A.

ACT	DATE	BY	REVISION
1	3/3/98	VCL	REVISED BLOCK 10 LOT 432 & CE LOT 15B

W.O. 5069-2 (15)
SHEET 2 OF 2
VCL

4288

4518-15

BOOK 83 Page 63

