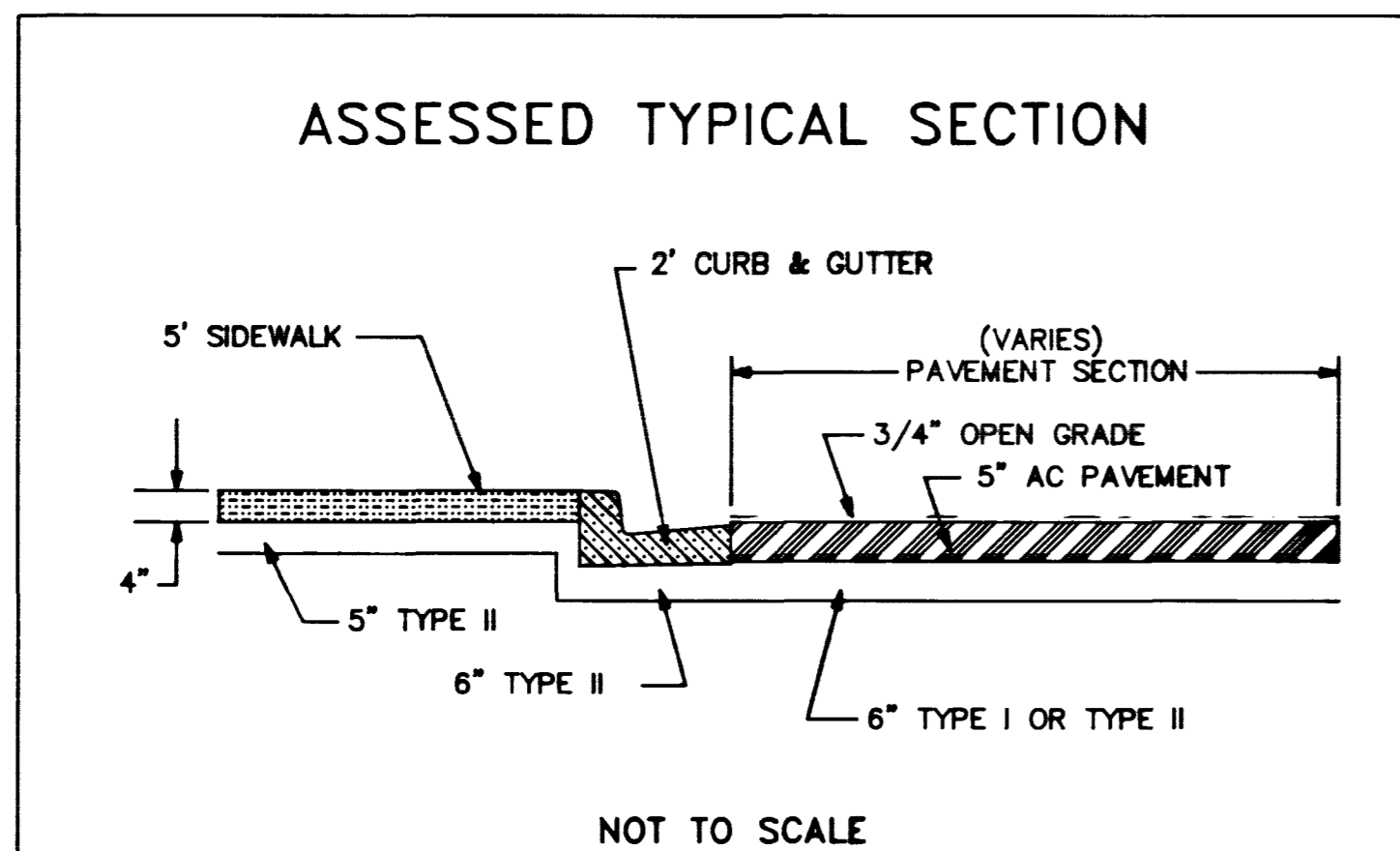
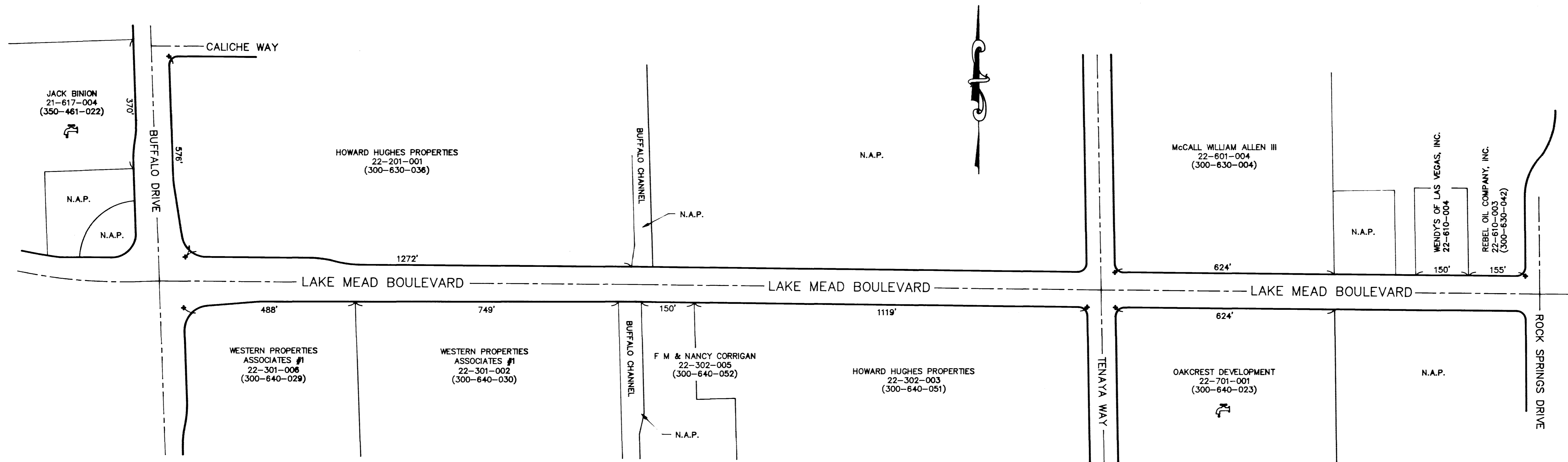


# LAKE MEAD BOULEVARD SPECIAL IMPROVEMENT DISTRICT 1414



	21-617-004	22-201-001	22-301-002	22-301-008	22-302-003	22-302-008	22-601-004	22-610-003	22-610-004	22-701-001
UNIT 1 8" PAVEMENT	370'	1272'	749'	488'			624'			624'
UNIT 2 43" PAVEMENT		576'			1119'	150'		155'	150'	
UNIT 3 CURB & GUTTER	370'	1848'	749'	488'	1119'		514'	75'	20'	624'
UNIT 4 SIDEWALK									20'	
UNIT 5 STREETLIGHTS	370'	1848'	749'	488'	1119'		624'	155'	150'	624'
UNIT 6 COMMERCIAL DRIVEWAY							2/40'	1/40'	2/30'	
UNIT 7 SEWER LATERAL										
UNIT 8 WATER MAIN										
UNIT 9 WATER LATERAL										

UNIT 1	STREETLIGHTS
	WATER COMMITMENTS
138-XX-XXX-XXX	TAX PARCEL
N.A.P.	NOT A PART

Scale (h) 1" = 150'  
 Scale (v) 1" = 150'  
 W.A.

Date: 03/24/93  
 Drawn by: T.P. McDANIEL  
 Date:

Revisions  
 Date

Department of Public Works  
 LAKE MEAD BOULEVARD  
 (BUFFALO DRIVE TO  
 ROCK SPRINGS DRIVE)

SPECIAL  
 IMPROVEMENT  
 DISTRICT  
 1414

Drawing Number 1

510/1414

