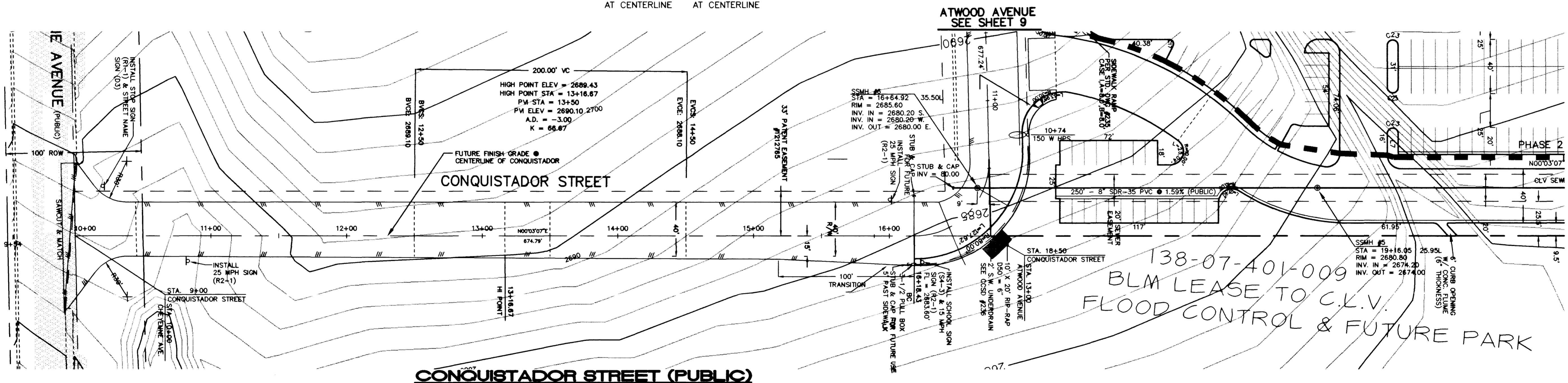


SCALE: HORIZ. 1" = 40'

 VERT. 1" = 4'



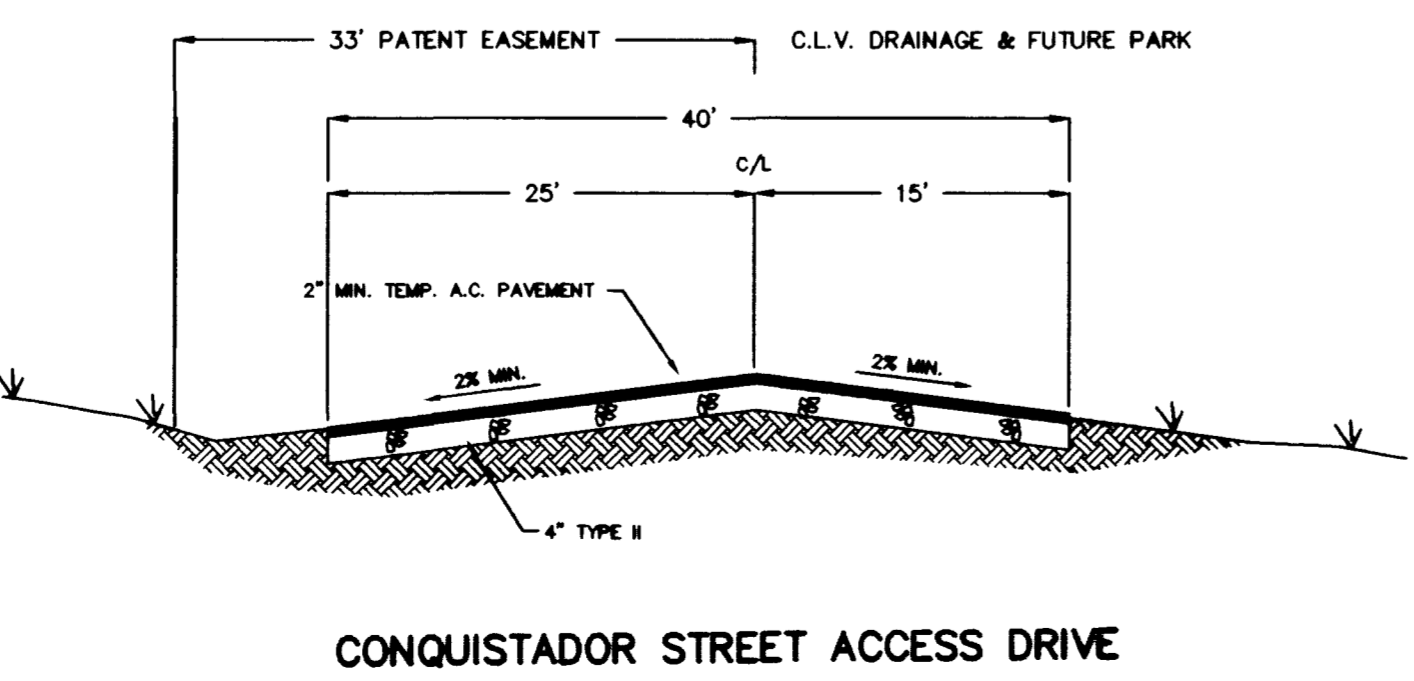
BASIS OF BEARING:

THE BASIS OF BEARING FOR THIS MAP IS THE WEST LINE OF THE SOUTHWEST QUARTER (SW 1/4) OF SECTION 7, TOWNSHIP 20 SOUTH, RANGE 60 EAST, MOB. BEING NORTH 00° 34' 03" EAST AS SHOWN IN THE OFFICE OF THE CLARK COUNTY, NEVADA RECORDER'S OFFICE IN FILE 69 OF SURVEYS ON PAGE 30.

BENCHMARK:

CLARK COUNTY BENCHMARK #1C0017NNW6 - RIVT AND SQUARE ALUMINUM PLATE IN TOP OF CURB, ON THE SOUTH SIDE OF CHEYENNE AVENUE AND THE EXTENDED ALIGNMENT OF CAMPBELL ROAD. ELEV. 768.043 METERS. (2519.82 NAVD 88)

METERS x $\frac{3937}{1200}$ = U.S. SURVEY FEET



QUANTITIES THIS SHEET
(PRIVATE)

2" TEMP. ASPHALTIC CONCRETE PAVING OVER 4" TYPE II	3,000 S.Y.
3" ASPHALTIC CONCRETE PAVING OVER 4" OVER 9"	256 S.Y.
24" 'L' CURB & GUTTER	80 L.F.
SIDEWALK	400 S.F.

SEWER CONNECTION NOTE:

ONE OR MORE SEGMENTS OF THE DOWNSTREAM SEWER SYSTEM THAT WILL SERVE THIS PROJECT HAS NOT BEEN COMPLETED AND/OR ACCEPTED FOR MAINTENANCE BY THE CITY OF LAS VEGAS ANY WORK DONE ON THIS PROJECT PRIOR TO THE COMPLETION AND/OR ACCEPTANCE OF THE DOWNSTREAM SEWER SYSTEM(S) SHALL BE DONE AT THE DEVELOPER'S OWN RISK. THE CITY OF LAS VEGAS RESERVES THE RIGHT TO PREVENT THE PHYSICAL CONNECTION OF THIS PROJECT INTO THE DOWNSTREAM SEWER SYSTEM UNTIL ALL SEGMENTS HAVE BEEN COMPLETED AND ACCEPTED FOR MAINTENANCE, OR UNTIL SUCH TIME AS THEY ARE DEEMED AVAILABLE FOR SERVICE.

NOTICE!

EXISTING UTILITIES ARE SHOWN ON PLANS FOR THE CONVEYANCE OF THE CONTRACTOR ONLY. THE CONTRACTOR IS RESPONSIBLE FOR THE PROTECTION OF ALL UTILITIES. THE ENGINEER BEARS NO RESPONSIBILITY FOR UTILITIES NOT SHOWN OR SHOWN INCORRECTLY.

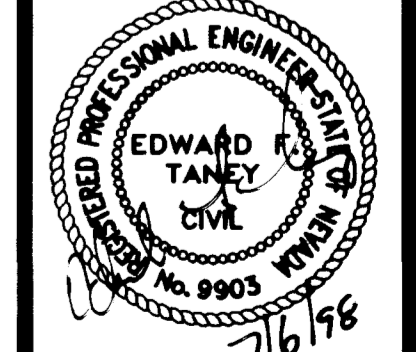
BEFORE YOU DIG

1-800-277-2800

West Charleston Baptist Church
 6701 WEST CHARLESTON BOULEVARD
 LAS VEGAS, NEVADA 89102
 (702) 239-4429

SHILOH CHRISTIAN SCHOOL
 SHILOH DRIVE
 PLAN + PROFILE

DRAWN BY: 04.30.98
 DESIGNED BY: 04.30.98
 CHECKED BY: 04.30.98
 PROJECT NO.: 716101
 SCALE: 1" = 40'



SHEET 7
 OF 16 SHEETS
 DRAWING NO. 715-102

