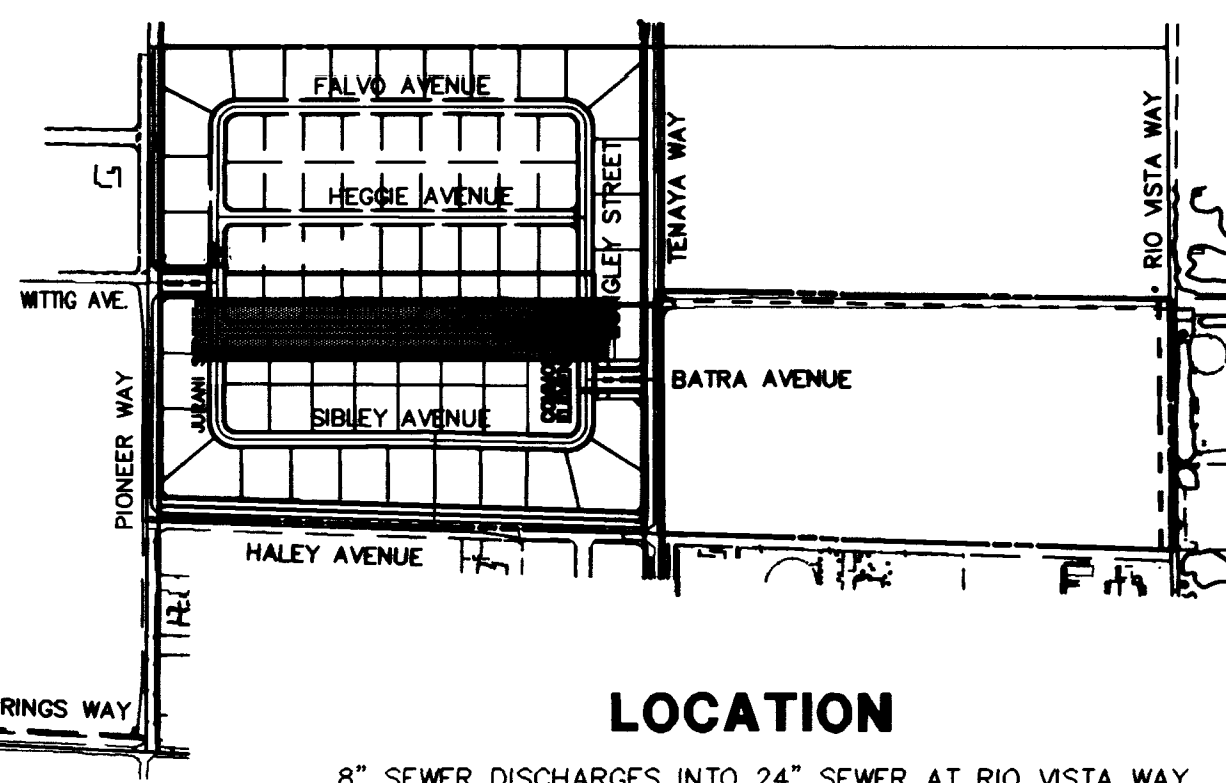


JURANI STREET
(PRIVATE STREET)
SEE SHEET 20

SEE SHEET 25
(PRIVATE STREET)
LONGLEY AVE.

ELDERLY AVENUE (PRIVATE)



LOCATION

8" SEWER DISCHARGES INTO 24" SEWER AT RIO VISTA WAY & HALEY AVE. SEE LOCATION MAP.

SEWER CONTRIBUTION

AVERAGE FLOW = .0236 MGD
PEAK FLOW = .08024 MGD

Call before you Overhead

1-702-593-6111
NEADA POWER ENVIRONMENT & SAFETY SERVICES DEPARTMENT

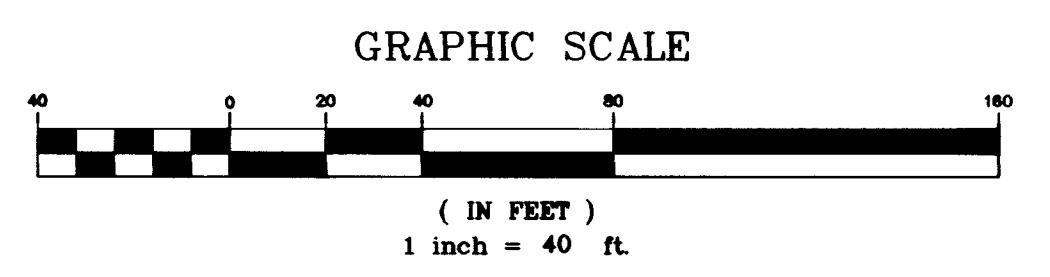
Call before you Dig.
1-800-227-2600

BENCHMARK

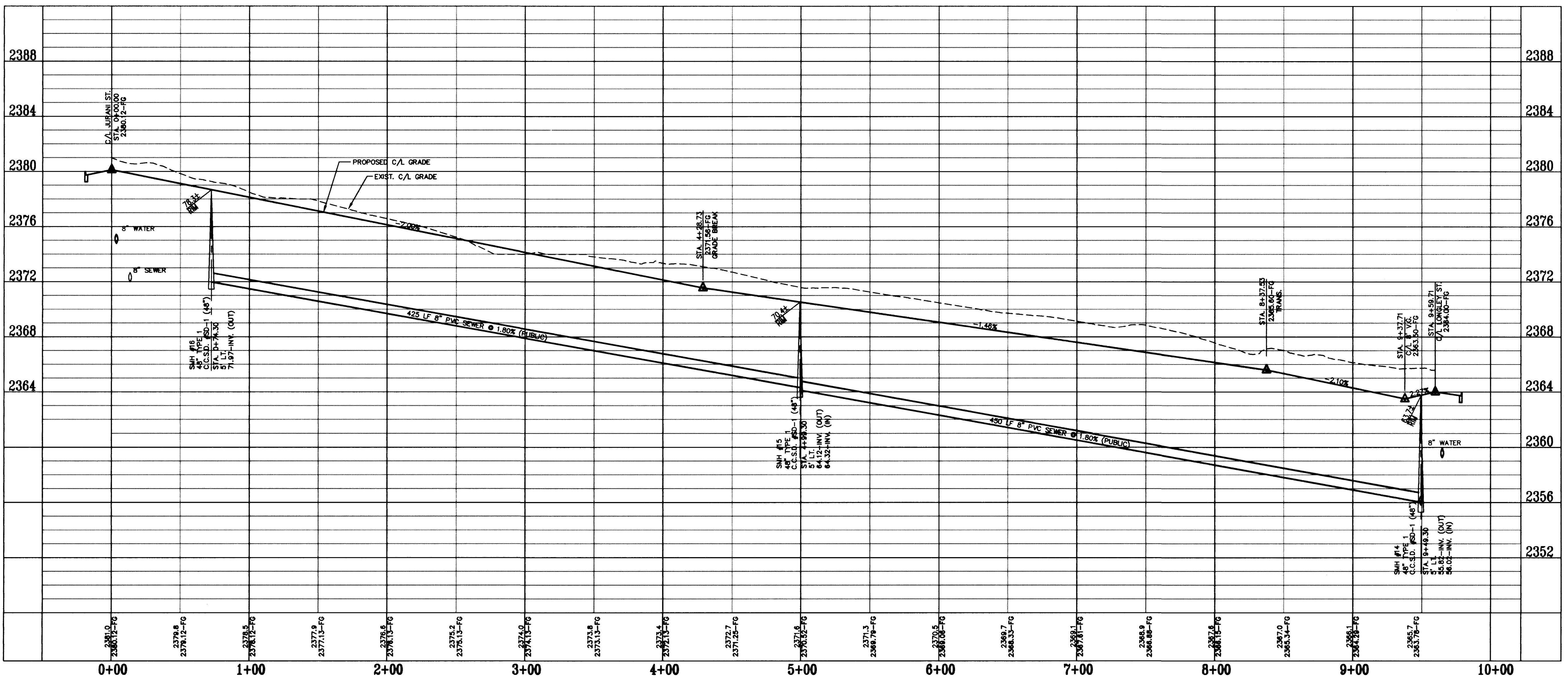
CLV BM # 48 11V9022W
RIVET & PLATE ON POWER-TRANS. PAD, 7535 W. DEER SPRINGS ROAD, 500' EAST OF BUFFALO DRIVE.
ELEV. = 727.8646 (METERS)
ELEV. = 2386.0020 (US. SURVEY FEET)
NAVD 88 DATUM

BASIS OF BEARINGS

THE BASIS OF BEARING FOR THIS SURVEY IS THE SOUTH LINE OF THE SOUTHEAST QUARTER OF THE NORTHWEST QUARTER OF SECTION 22, TOWNSHIP 19 SOUTH, RANGE 60 EAST, M.D.M., CITY OF LAS VEGAS, CLARK COUNTY NEVADA, AS SOUTH 84°59'10" EAST, AS SHOWN ON FILE 85, PAGE 38 OF SURVEYS IN THE OFFICE OF THE CLARK COUNTY, NEVADA.
REFERENCE SURVEY:
RECORD OF SURVEY FILE 85, PAGE 38 O.R.
CITY OF LAS VEGAS ANNEXATION ORD. # 4003



SCALE: 1" = 40'

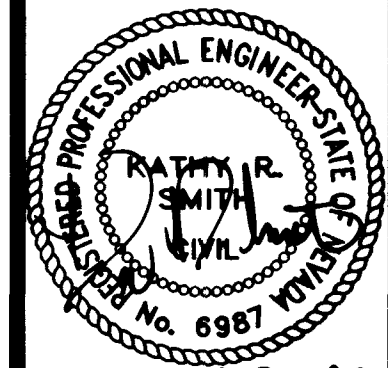


THE DEVELOPERS OF NEVADA
7448 WEST SAHARA AVENUE
LAS VEGAS, NEVADA 89117
(702) 222-1410

ELDERLY AVENUE
8" SANITARY SEWER
PLAN AND PROFILE

SHENANDOAH
UNIT 1

DRAWN BY: ROCKY
DESIGNED BY: ROCKY/CHAO
CHECKED BY: GREG RIBERO
PROJECT NO: 885 0250



SHEET 387
27 OF 34 SHEETS
DRAWING NO. 3074-4573-1

