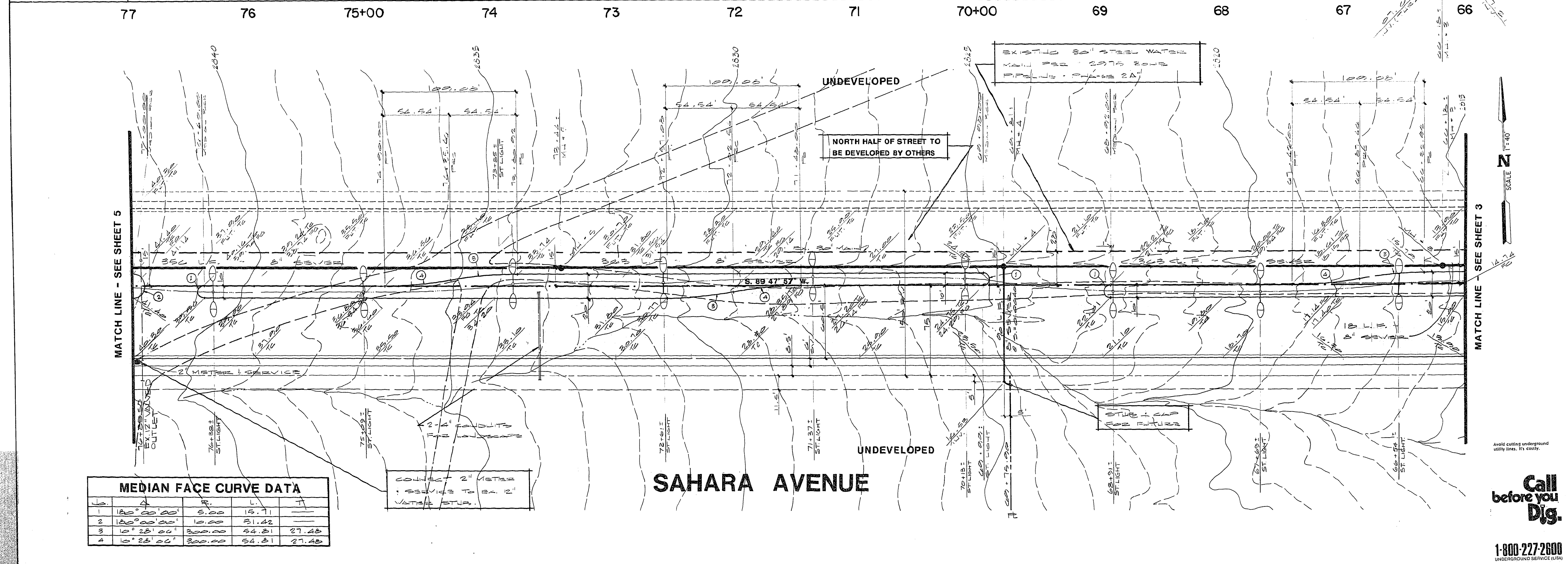


REV	DATE	BY	REVISION
1	12-20-84	C.N.	REVISED TO SHOW LATEST FIELD DATA
2	8-1-88	B.N.	REVISED STATUS LOCATIONS PER EDIS LINES PRELIMINARY PHASE 2A



**ES/ENGINEERS & SURVEYORS INC.**  
 TO BE DEVELOPED BY OTHERS  
 1177222-303-0415

DATE: 9/2/87  
 SUBMITTED BY: [Signature]

**STREET & SEWER PLAN & PROFILE**  
 (SAHARA AVENUE - STA. 66 + 00 TO 77 + 00)

**SEC. 7 THE LAKES AT WEST SAHARA**  
 (PHASE 4)

WO NO. 5032  
 BY: B. L. G.  
 DATE: 8/87  
 SCALE: HORIZ. 1" = 40'  
 VERT. 1" = 4'

SHEET **4** OF 11 SHEETS

1-800-227-2600  
 UNICORP/UNICORP SERVICE BUREAU

Curve No.	Angle (°)	Radius (ft)	Length (ft)	Chord (ft)	Offset (ft)
1	120°	200.00	51.00	15.71	—
2	120°	200.00	10.00	31.42	—
3	10°	251.00	300.00	54.81	27.43
4	10°	251.00	300.00	54.81	27.43

CONNECT 2" METERS SERVICE TO SA. 12" WATER MAIN