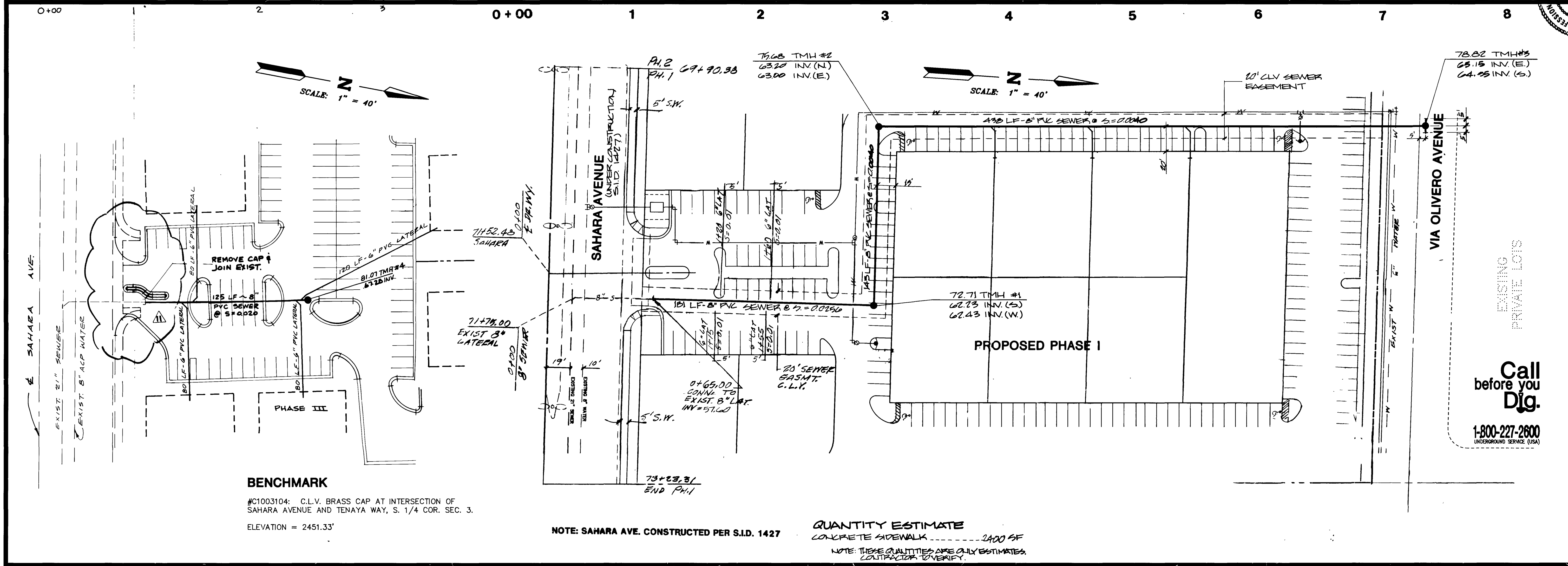


REV	DATE	BY	REVISION
1	5/19/91	LRB	ADDED DRAWING PER CIV REVIEW
2	9/19/93	LPA	CHANGED SEWER ON PH. I & 2 - TAKE PROFILE
3	11/19/93	LPA	REV'D SEWER TO WEST OF BUILDING
4	9-2-93	PL	REV. SEWER INVERTS PER CIV
5	10-22-93	PL	REV. SEWER PHASE II
6	11-4-93	CFA	REV'D SEWER PH. I'S TO CORRECT ERROR OF 1/4"
7	12-14-93	AM	REVISED PHASE III FROM EXISTING TO BE BUILT
8	1-18-95	SLH	CHANGED PHASE I & 2 LATERALS PHASE III
9	18-7-95	DMB	REV. ENTIRE SHEET

ES ENGINEERS & ARCHITECTS, INC.
 1000 W. 10TH AVENUE, SUITE 100
 DENVER, CO 80202
 303.733.1111
 9/11/93
 SUBMITTED BY: *David Anderson*



BENCHMARK
 #C1003104: C.L.V. BRASS CAP AT INTERSECTION OF SAHARA AVENUE AND TENAYA WAY, S. 1/4 COR. SEC. 3.
 ELEVATION = 2451.33'

NOTE: SAHARA AVE. CONSTRUCTED PER S.I.D. 1427

QUANTITY ESTIMATE
 CONCRETE SIDEWALK ----- 2400 SF
 NOTE: THESE QUANTITIES ARE ONLY ESTIMATES. CONTRACTOR TO VERIFY.

ON-SITE SEWER PLAN & PROFILE
 REVISIONS AFTER 7/23/92
 PROJECT
SAHARA PROFESSIONAL PARK PHASE I-III
 (A COMMERCIAL SUBDIVISION)

W.O. #: 742-9617
 BY: DSR
 DATE: MAY 1991
 SCALE: VERT. 1"=4'
 HORIZ. 1"=40'

SHEET
6
 OF 7 SHEETS

Call before you Dig.
 1-800-227-2600
 (PROVIDING SERVICE IN USA)

