

950526

16-17-72

# RANCHO SANTA FE - UNIT 4

A PORTION OF LOT 3 OF PARCEL MAP: FILE 76, PAGE 89 LOCATED IN THE SOUTHEAST QUARTER (SE 1/4) OF THE NORTHEAST QUARTER (NE 1/4) OF SECTION 34, TOWNSHIP 19 SOUTH, RANGE 60 EAST, M.D.M., CITY OF LAS VEGAS, CLARK COUNTY, NEVADA

FOUND AL. CAP. RLS 1803

ANN ROAD

(BK. 63, P. 6.80)  
RANCHO SANTA FE - UNIT 3  
APN 128-34-802-008

### LEGEND

- P.O.C. POINT OF COMMENCEMENT
- P.O.B. POINT OF BEGINNING
- 15 LOT NUMBER / RESIDENTIAL = 52
- Ⓜ BLOCK NUMBER
- R1 RADIAL LINE NUMBER
- L3 COURSE NUMBER
- C2 CURVE NUMBER
- ⊙ FOUND MONUMENT AS DESCRIBED
- SET TYPE III MONUMENT - AL. CAP "VTN PLS 8421"
- SET NAIL & BRASS TAG "PLS 8421" OR SAWCUT TOP OF CURB ON PROLONGATION OF PROPERTY LINES, PER NOTE 1
- S.F. SQUARE FEET
- (PROD) PRODUCED LINE

RANCHO SANTA FE - UNIT 3  
PLATS: BOOK 60, PAGE 81

### CURVE TABLE

CURVE	RADIUS	LENGTH	TANGENT	DELTA
C1	15.00'	23.56'	15.00'	90°00'00"
C2	25.00'	19.31'	10.16'	44°14'57"
C3	45.50'	213.22'	46.71'	268°29'49"
C4	45.50'	38.72'	20.62'	48°45'19"
C5	45.50'	9.83'	4.93'	12°22'25"
C6	45.50'	58.07'	33.74'	73°07'13"
C7	45.50'	213.23'	46.70'	268°29'54"
C8	25.00'	19.31'	10.16'	44°14'57"
C9	45.50'	23.07'	11.79'	29°03'08"
C10	45.50'	83.54'	58.51'	105°11'49"
C11	45.50'	83.54'	58.51'	105°11'49"
C12	45.50'	23.07'	11.79'	29°03'08"
C13	45.50'	22.82'	11.65'	28°43'59"
C14	45.50'	83.79'	59.85'	105°30'58"
C15	45.50'	83.79'	59.85'	105°30'58"
C16	45.50'	22.82'	11.65'	28°43'59"
C17	45.50'	106.61'	107.84'	134°14'57"
C18	45.50'	36.17'	19.10'	45°32'38"
C19	45.50'	21.18'	10.78'	26°39'57"
C20	25.00'	15.13'	7.81'	34°40'50"
C21	25.00'	4.18'	2.09'	09°34'07"
C22	45.50'	10.08'	5.06'	12°41'41"
C23	45.50'	10.08'	5.06'	12°41'51"
C24	45.50'	49.27'	27.36'	62°02'21"

SCALE: 1" = 40'

### COURSE TABLE

LINE	DIRECTION	DISTANCE
L1	N 89°22'46" E	15.98'
L2	S 89°19'33" W	10.00'
L3	S 89°22'46" E	15.98'
L4	N 89°22'46" E	9.55'
L5	S 88°21'41" W	8.03'
L6	S 88°21'41" W	8.03'
L7	N 89°22'46" E	15.73'
L8	N 89°19'33" E	10.00'
L9	N 89°22'46" E	15.73'
L10	N 88°18'33" E	11.10'
L11	N 89°19'33" E	11.12'

### RADIAL LINE TABLE

LINE	BEARING	DESCRIPTION
R1	N 16°57'45" E	
R2	S 43°37'43" W	PRC
R3	S 44°52'11" E	PRC
R5	N 78°41'04" E	
R6	N 89°22'46" E	
R8	N 17°30'01" W	
R9	S 89°22'46" W	
R10	S 77°55'23" E	
R11	N 28°34'53" W	

RANCHO SANTA FE - UNIT 1  
PLATS: BOOK 58, PAGE 44

RANCHO SANTA FE - UNIT 1  
PLATS: BOOK 58, PAGE 44

### NOTE:

DIRECT VEHICULAR ACCESS TO RAINBOW BOULEVARD FROM ADJUTING LOTS IS PROHIBITED.

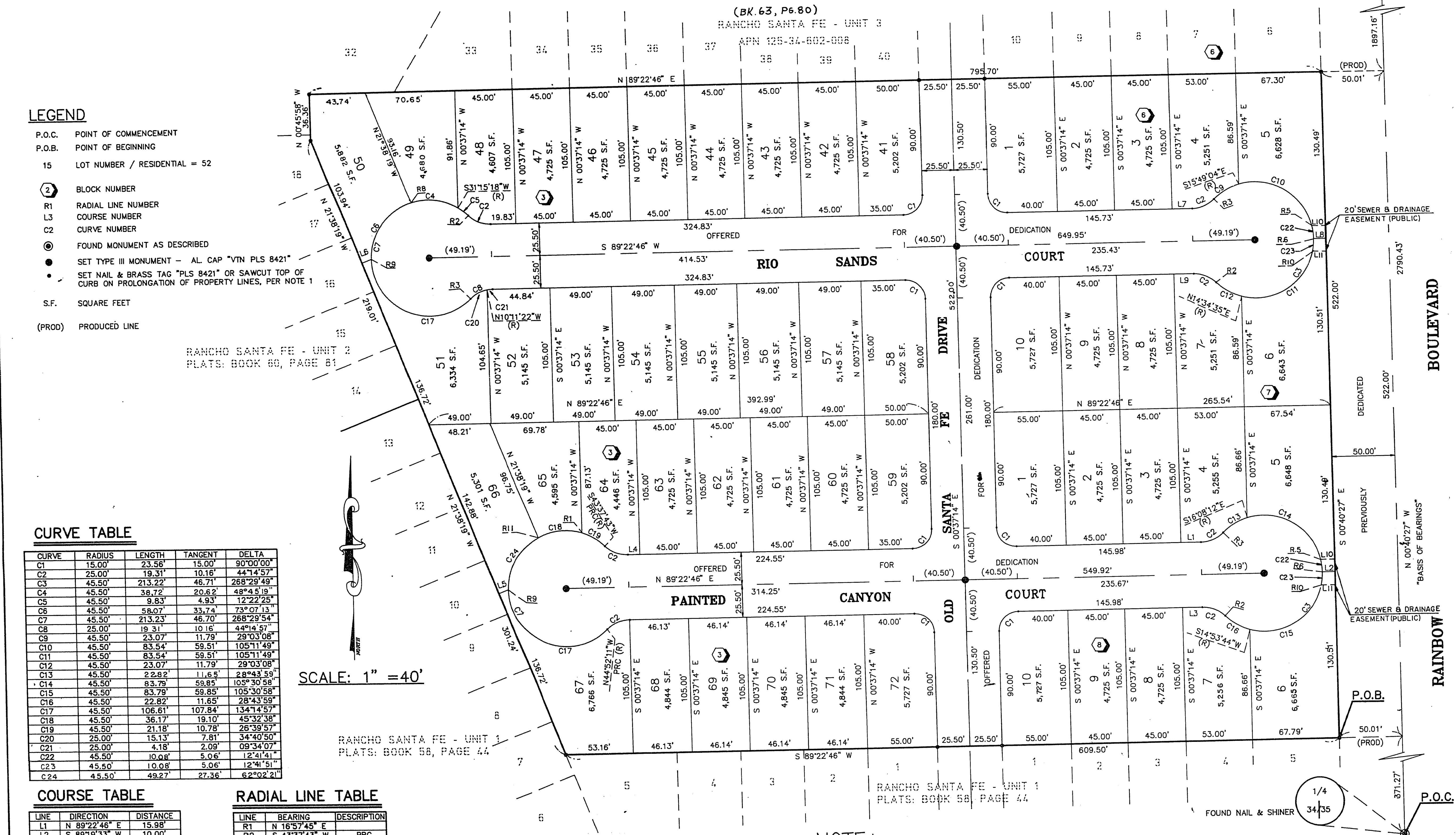
### NOTE:

PURSUANT TO NRS 278.371 ALL REAR LOT CORNERS SHALL BE SET WITH A NAIL AND BRASS TAG "PLS 8421" ON BLOCK WALLS AND ALL FRONT OR SIDE LOT CORNERS ADJOINING RIGHT-OF-WAY SHALL BE MARKED BY THE SAWCUTTING OF THE BACK OF CURBS ON THE PROLONGATION OF THE PROPERTY LINES.

W.O. 4228-4  
SHEET 2 OF 2

T.H.

BOOK 68 Page 17



ACT	DATE	BY	REVISION
1	04/94	T.H.	REV. LOT LINE COMMON TO LOTS 4 & 5 OF BLK 3 PER L.J.T.
2	1/3/94	T.H.	CORRECTIONS PER CLV