

CURVE DATA

CURVE	RADIUS	LENGTH	TANGENT	DELTA
15	15.00	23.56	15.00	90°00'00"
16	25.00	38.18	23.93	87°30'29"
17	15.00	23.56	15.00	90°00'00"
18	25.00	38.18	23.93	87°30'29"
19	15.00	23.56	15.00	90°00'00"
20	25.00	38.18	23.93	87°30'29"

C-1 SEE SMT. 2 OF 6

SIDEWALK RAMP IN CURB RETURN
(PER R.S.1.1.2, [613] NDOT)
TYPE "D"
(SEE SHT. 2 OF 6 FOR "A" & "B" DIM.)

NOTES

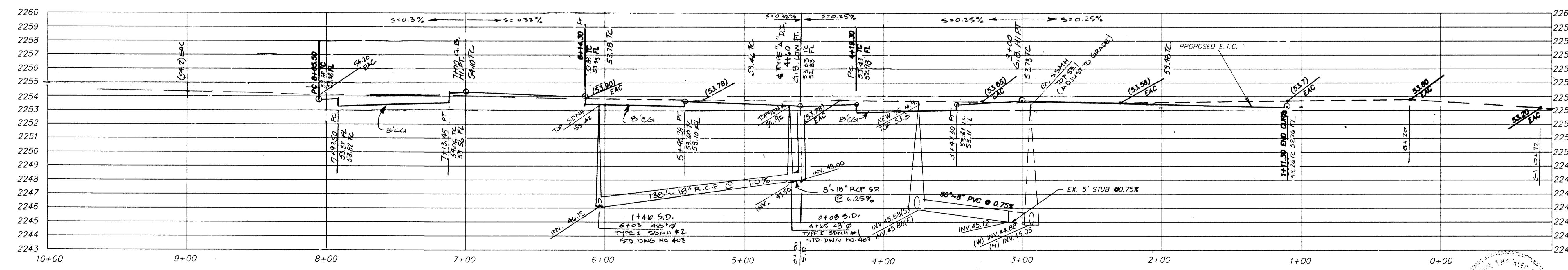
- FINAL A.C. PAVEMENT SURFACE (INCLUDING OPEN GRADE) SHALL BE 1/2" ABOVE LIP OF GUTTER.
- STRUCTURAL SECTION SHOWN IS BASED ON AN "R" VALUE OF 20. OTHER STRUCTURAL SECTIONS MAY BE APPROVED IF BASED ON ENGINEERING ANALYSIS BASED ON "R" OR "CBR" VALUES DETERMINED BY SOIL TESTING. IN NO CASE SHALL THE A.C. THICKNESS BE LESS THAN SHOWN.

PROJECT BENCHMARK:

CLV 1LV001254 RIVET & PLATE IN TOP OF CURB
NE RTN. OF CHEYENNE AVE. & MICHAEL WAY
EL. = 2254.234 FT. - NGVD 29 PROJECT DATUM
= 2251.203 (FT) - NAVD 88
NAVD 88 = NGVD 29 + 2.363'

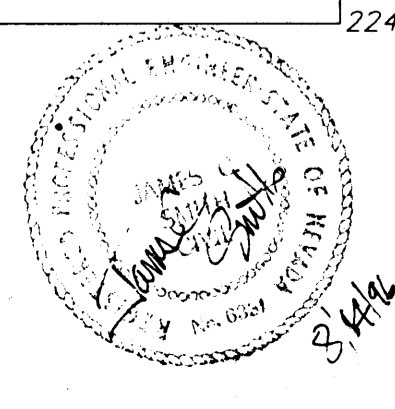
BASIS OF BEARING:

N 00°24'27" E, BEING THE WEST LINE OF THE SOUTHEAST QUARTER OF SECTION 12, T. 20 S., R. 60 E., M.D.M., AS SHOWN ON THE PLAT OF ELSTNER ESTATES IN BOOK 1, PAGE 22 OF PLATS, CLARK COUNTY, NEVADA OFFICIAL RECORDS.



RANCHO DRIVE
PLAN & PROFILE
N.D.O.T. (R.O.W.)

HORIZONTAL SCALE: 1" = 40'
VERTICAL SCALE: 1" = 4'



C.S.A. ENGINEERING SERVICES
6035 SO. EASTERN AVE. STE. 24
LAS VEGAS, NEVADA 89119
(703) 687-4454 FAX (703) 687-4455 FAX

RANCHO GOWAN COMMERCIAL CENTER
CITY OF LAS VEGAS NEVADA

RANCHO DRIVE PLAN & PROFILE

PROJECT NO. **1016**
FILE NO. _____
SHEET 4 OF 6

SCALE (H): 1" = 40'
SCALE (V): 1" = 4'
DES. BY: JCS
DWN. BY: DLV
CHK. BY: JCS
DATE: 05/96

NO. DESCRIPTION BY DATE APPR

107-12587