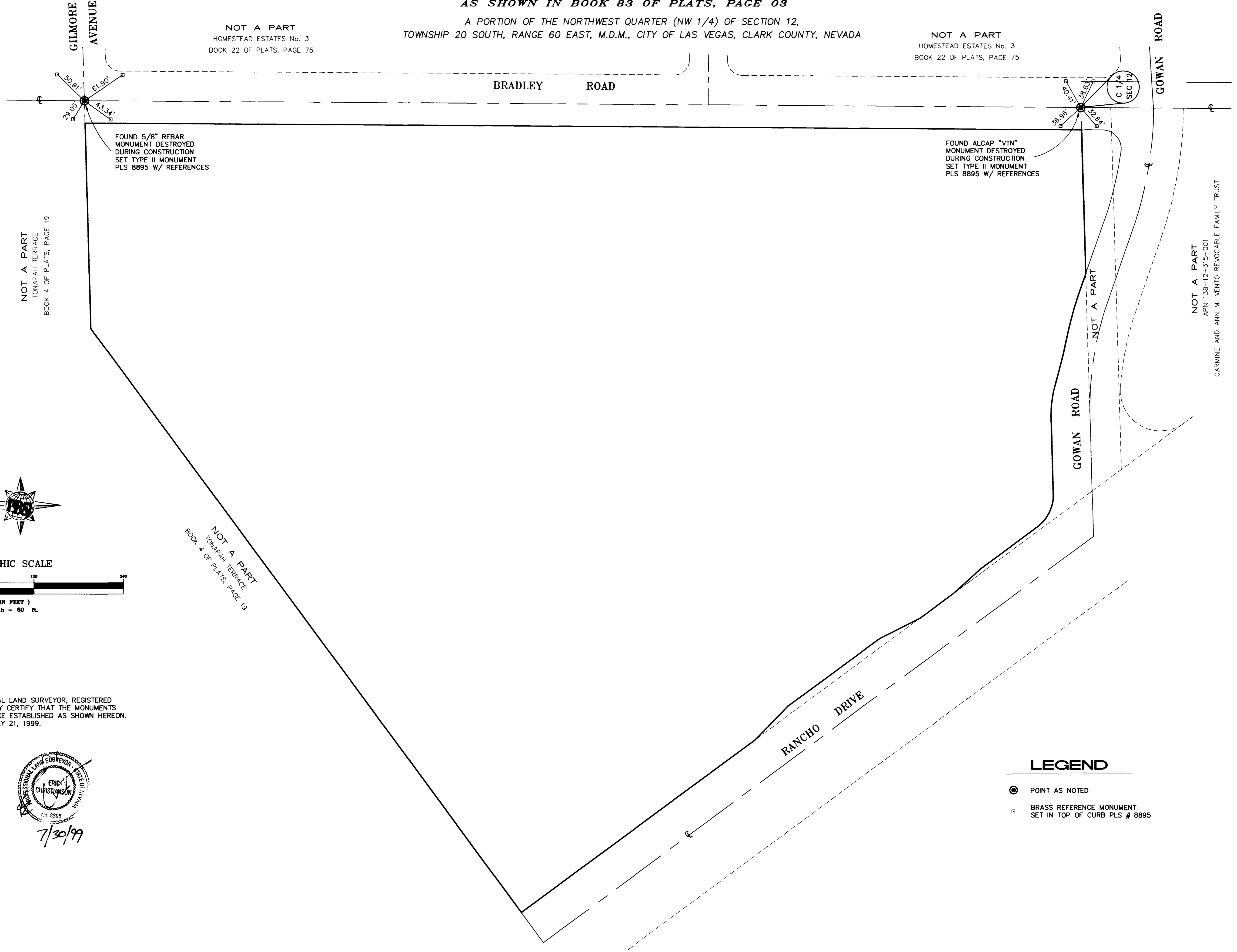


Avoid cutting underground utility lines. It's costly.
Call before you Dig
 1-800-227-2600

MONUMENT TIE MAP FOR RANCHO BUSINESS PARK

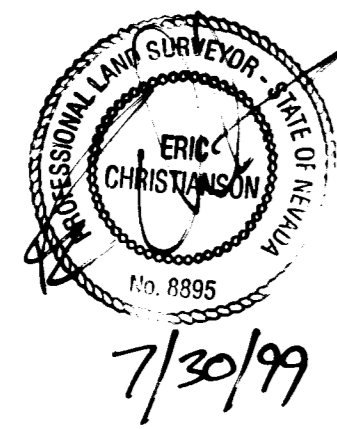
AS SHOWN IN BOOK 83 OF PLATS, PAGE 03
 A PORTION OF THE NORTHWEST QUARTER (NW 1/4) OF SECTION 12,
 TOWNSHIP 20 SOUTH, RANGE 60 EAST, M.D.M., CITY OF LAS VEGAS, CLARK COUNTY, NEVADA



SURVEYOR'S CERTIFICATE

I, ERIC CHRISTIANSON, A PROFESSIONAL LAND SURVEYOR, REGISTERED IN THE STATE OF NEVADA, DO HEREBY CERTIFY THAT THE MONUMENTS HAVE BEEN SET AND THE TIE DISTANCE ESTABLISHED AS SHOWN HEREON. THIS SURVEY WAS COMPLETED ON JULY 21, 1999.

ERIC CHRISTIANSON
 PROFESSIONAL LAND SURVEYOR
 STATE OF NEVADA
 REGISTRATION NO. 8895



LEGEND

- POINT AS NOTED
- BRASS REFERENCE MONUMENT SET IN TOP OF CURB PLS # 8895

Job Number	51988	Drawn by	Scale	AS SHOWN
Sheet Number	1 OF 1	Checked by	EC	File No.
		Date	JULY 7, 1999	988MT
		PLOT DATE:		7/21/99
		DRAWING:		988MT
				REVISIONS
				No.
				Date
				Inst.
				Appr.
				Date

POST BUCKLEY SCHUH & ERNIGAN
 ENGINEERING - PLANNING - SURVEYING - CONSTRUCTION SERVICES
 6600 West Charleston Blvd.
 Las Vegas, Nevada 89102
 Phone: 702/739-6344
 Fax: 702/739-7728

MONUMENT TIE MAP FOR
RANCHO BUSINESS PARK
 CITY OF LAS VEGAS,
 CLARK COUNTY, NEVADA

