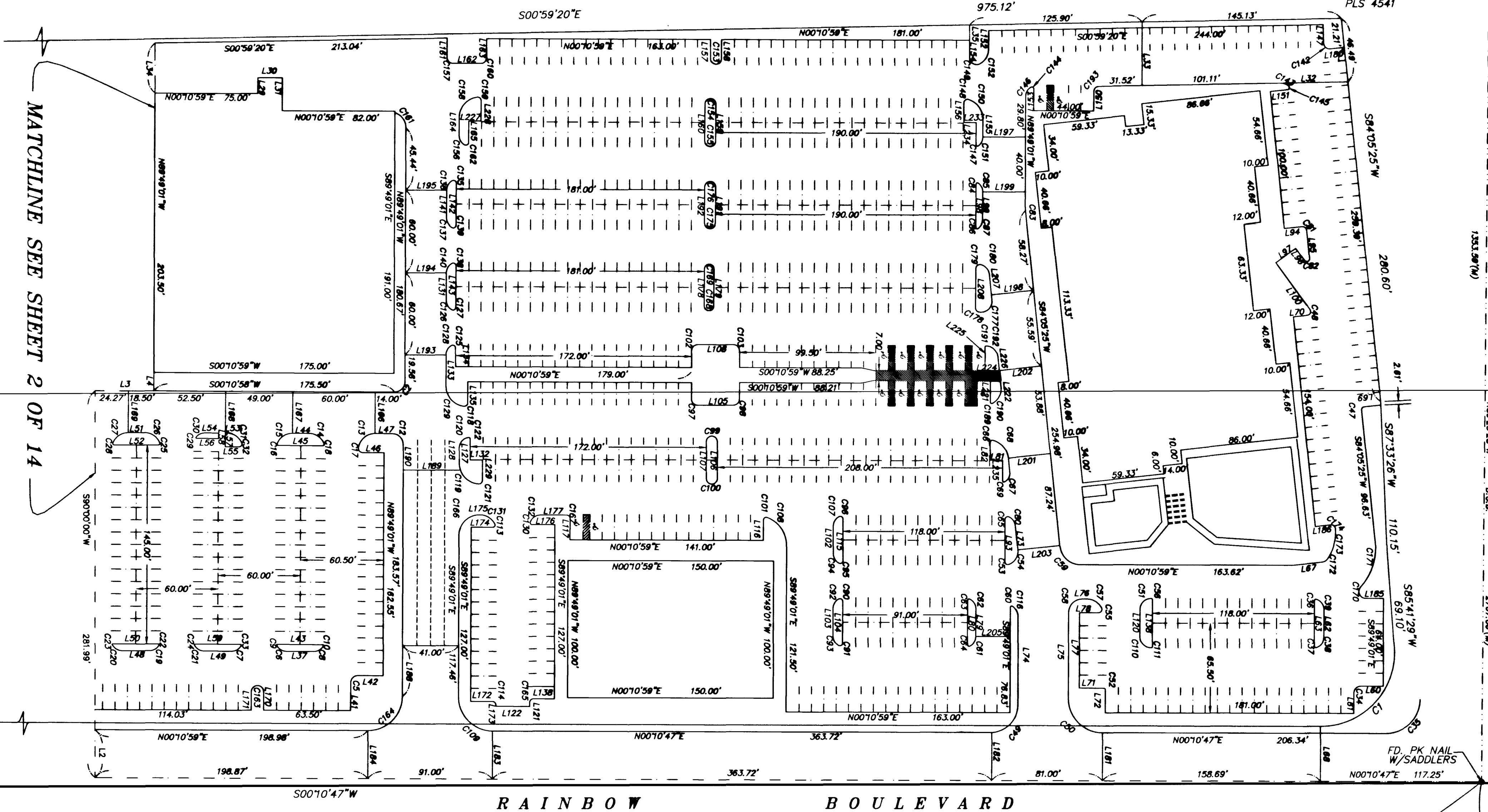


SCALE 1" = 50'



FND. BLM BC FOR N 1/4 COR. SEC 22 PLS 8660

FND. 3" BRASS CAP FOR E 1/16 COR. PLS 4541

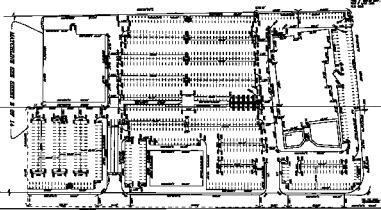
NUMBERED COURSES:

LINE	DIRECTION	DISTANCE	LINE	DIRECTION	DISTANCE
L2	N80°00'00"W	34.98'	L106	N00°11'02"E	26.00'
L3	N00°10'58"E	42.77'	L115	N89°49'01"W	30.38'
L4	N89°49'01"W	13.50'	L116	N89°49'01"W	14.88'
L5	S40°52'27"E	21.20'	L117	N89°49'01"W	15.50'
L6	N84°05'25"E	13.82'	L120	N89°49'01"W	20.00'
L7	N84°16'28"E	17.33'	L121	S89°49'01"E	3.00'
L8	N84°10'59"E	40.67'	L122	S00°10'59"W	24.50'
L9	N05°48'26"E	17.00'	L123	N89°49'01"W	15.43'
L10	N05°48'26"E	6.00'	L128	S89°49'01"E	11.00'
L11	N84°05'25"E	33.87'	L131	N89°49'01"W	20.00'
L12	S39°03'17"W	25.85'	L132	S00°10'59"W	9.00'
L13	S84°16'28"W	34.00'	L133	N89°49'01"W	22.50'
L14	S05°50'19"E	10.00'	L134	N89°49'01"W	13.70'
L15	N05°50'19"E	17.07'	L135	N89°49'01"W	15.41'
L16	S84°16'28"W	7.33'	L138	N00°10'59"E	15.50'
L17	N05°50'19"E	8.00'	L139	S89°49'01"E	34.00'
L18	S84°16'28"W	41.37'	L141	N89°49'01"W	20.00'
L19	S84°16'28"W	41.36'	L142	N89°49'01"W	30.44'
L20	S05°50'19"E	44.48'	L143	N89°49'01"W	30.38'
L21	S05°48'26"E	17.00'	L147	S89°49'01"E	13.29'
L22	S05°48'26"E	6.00'	L150	N89°49'01"W	14.42'
L23	N84°05'25"E	40.67'	L151	S05°54'35"E	12.68'
L24	S84°16'28"W	10.12'	L152	N89°49'01"W	13.67'
L25	S05°50'19"E	8.00'	L153	N89°49'01"W	15.70'
L26	S84°16'28"W	40.58'	L154	N89°49'01"W	12.38'
L27	N05°50'19"E	9.33'	L155	S89°49'01"E	13.00'
L28	S83°48'05"E	34.00'	L156	S89°49'01"E	14.48'
L29	N89°49'01"W	11.50'	L159	N89°49'01"W	14.00'
L30	S05°50'19"E	18.00'	L160	S89°49'01"E	14.00'
L31	S89°49'01"W	24.00'	L161	N89°49'01"W	27.00'
L32	N00°10'59"E	48.89'	L162	N00°10'59"E	21.00'
L33	N89°49'01"W	46.11'	L163	N89°49'01"W	14.00'
L34	N00°10'59"E	36.53'	L164	S89°49'01"E	13.00'
L35	N89°49'01"W	11.12'	L165	S89°49'01"E	15.70'
L36	N00°10'59"E	20.00'	L166	N89°49'01"W	30.44'
L37	S89°49'01"E	20.44'	L167	N89°49'01"W	30.44'
L38	N00°10'59"E	18.50'	L168	N89°49'01"W	30.44'
L39	N00°10'59"E	33.27'	L169	N89°49'01"W	30.44'
L40	N00°10'59"E	15.44'	L170	S89°49'01"E	13.48'
L41	N00°10'59"E	12.50'	L171	S00°10'59"W	15.88'
L42	N00°10'59"E	20.00'	L172	S00°10'59"W	16.00'
L43	N00°10'59"E	33.27'	L173	N89°49'01"E	1.00'
L44	N00°10'59"E	33.27'	L174	S00°10'59"W	15.88'
L45	N00°10'59"E	32.49'	L175	N00°10'59"E	0.50'
L46	N00°10'59"E	32.49'	L176	N00°10'59"E	16.50'
L47	N00°10'59"E	32.49'	L177	N00°10'59"E	18.00'
L48	N00°10'59"E	12.00'	L178	N00°10'59"E	27.00'
L49	N00°10'59"E	32.49'	L179	N89°49'01"W	27.00'
L50	N00°10'59"E	10.00'	L180	S05°54'35"E	10.29'
L51	N00°10'59"E	10.16'	L181	S89°49'01"E	35.00'
L52	N00°10'59"E	16.00'	L182	S89°49'01"E	35.00'
L53	N00°10'59"E	1.00'	L183	S89°49'01"E	35.00'
L54	N00°10'59"E	10.00'	L184	S89°49'01"E	34.87'
L55	N00°10'59"E	10.16'	L185	S00°10'59"W	13.00'
L56	N00°10'59"E	16.00'	L186	S06°04'16"E	11.48'
L57	N89°49'01"W	4.00'	L187	S89°49'01"E	37.07'
L58	N00°10'59"E	33.27'	L188	N89°49'01"W	41.00'
L59	N00°10'59"E	15.00'	L189	S00°10'59"W	13.00'
L60	S89°49'01"E	20.00'	L190	N89°49'01"W	18.50'
L61	S89°49'01"E	33.42'	L191	N89°49'01"W	26.00'
L62	S89°49'01"E	40.00'	L192	N89°49'01"W	26.00'
L63	S89°49'01"E	33.42'	L193	S00°10'59"W	30.00'
L64	N05°54'11"E	10.30'	L194	S00°10'59"W	30.00'
L65	S89°49'01"E	40.00'	L195	S00°10'59"W	30.00'
L66	S05°54'35"E	12.34'	L196	N89°49'01"W	35.30'
L67	S89°49'01"E	12.34'	L197	N00°10'59"E	31.07'
L68	S89°49'01"E	64.08'	L198	N05°54'35"E	31.00'
L69	S89°49'01"E	62.51'	L199	N00°10'59"E	31.07'
L70	S00°10'59"W	1.68'	L200	S05°54'35"E	31.00'
L71	S89°49'01"E	55.00'	L201	S05°54'35"E	31.00'
L72	S89°49'01"E	13.87'	L202	N05°54'35"E	31.00'
L73	N89°49'01"W	20.00'	L203	N00°10'59"E	31.00'
L74	N89°49'01"W	32.63'	L204	N00°10'59"E	25.00'
L75	N89°49'01"W	13.11'	L205	N00°10'59"E	25.00'
L76	S05°54'35"E	13.00'	L206	S84°05'25"E	18.11'
L77	N89°49'01"W	13.11'	L207	S84°05'25"E	15.18'
L78	N89°49'01"W	13.11'	L208	S89°49'01"E	28.39'
L79	S05°54'35"E	13.00'	L209	S00°10'59"W	15.18'
L80	N84°05'25"E	20.82'	L210	S00°10'59"W	16.87'
L81	S05°54'35"E	18.00'	L211	S00°10'59"W	10.01'
L82	N89°49'01"W	31.01'	L212	S00°10'59"W	9.00'
L83	N89°49'01"W	31.01'	L213	S89°49'01"E	14.87'
L84	S84°05'25"E	10.98'	L214	S89°49'01"E	14.87'
L85	S84°05'25"E	10.98'	L215	N00°10'59"E	8.00'
L86	S84°05'25"E	18.00'	L216	N89°49'01"W	16.13'
L87	N89°49'01"W	27.00'	L217	N89°49'01"W	14.87'
L88	N89°49'01"W	27.00'	L218	N89°49'01"W	14.87'
L89	N89°49'01"W	27.00'	L219	N89°49'01"W	14.87'
L90	N89°49'01"W	27.00'	L220	N89°49'01"W	14.87'
L91	N89°49'01"W	27.00'	L221	N89°49'01"W	14.87'
L92	N89°49'01"W	27.00'	L222	N89°49'01"W	14.87'
L93	N89°49'01"W	27.00'	L223	N89°49'01"W	14.87'
L94	N89°49'01"W	27.00'	L224	N89°49'01"W	14.87'
L95	N89°49'01"W	27.00'	L225	N89°49'01"W	14.87'
L96	N89°49'01"W	27.00'	L226	N89°49'01"W	14.87'
L97	N89°49'01"W	27.00'	L227	N89°49'01"W	14.87'
L98	N89°49'01"W	27.00'	L228	N89°49'01"W	14.87'
L99	N89°49'01"W	27.00'	L229	N89°49'01"W	14.87'
L100	N89°49'01"W	27.00'	L230	N89°49'01"W	14.87'
L101	N89°49'01"W	27.00'	L231	N89°49'01"W	14.87'
L102	N89°49'01"W	27.00'	L232	N89°49'01"W	14.87'
L103	N89°49'01"W	27.00'	L233	N89°49'01"W	14.87'
L104	N89°49'01"W	27.00'	L234	N89°49'01"W	14.87'
L105	N89°49'01"W	27.00'	L235	N89°49'01"W	14.87'
L106	N89°49'01"W	27.00'	L236	N89°49'01"W	14.87'
L107	N89°49'01"W	27.00'	L237	N89°49'01"W	14.87'

CURVE TABLE:

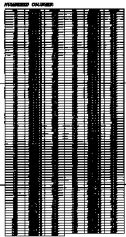
CURVE	RADIUS	LENGTH	TANGENT	DELTA										
C1	54.00'	89.03'	58.36'	94°27'39"										
C2	11.28'	7.50'	89.59'59"	C62	8.00'	9.02'	5.08'	64°37'23"						
C3	5.00'	7.85'	5.00'	89°59'48"	C63	1.00'	2.01'	1.58'	115°22'37"					
C4	0.50'	1.03'	0.83'	117°49'05"	C64	2.01'	1.58'	115°22'37"	C137	2.00'	4.19'	3.48'	120°00'00"	
C5	1.03'	0.83'	117°49'05"	C65	2.00'	3.11'	114°54'14"	C138	2.00'	4.19'	3.48'	120°00'00"		
C6	0.50'	1.03'	0.83'	117°49'05"	C66	1.50'	2.72'	1.91'	103°49'58"	C139	8.00'	8.38'	4.62'	60°00'00"
C7	8.00'	8.68'	4.82'	82°10'55"	C67	7.00'	8.31'	4.87'	89°41'19"	C140	8.00'	8.38'	4.62'	60°00'00"
C8	8.00'	8.68'	4.82'	82°10'55"	C68	15.00'	18.33'	10.54'	70°44'58"	C142	4.50'	4.88'	4.88'	94°55'59"
C9	12.57'	8.00'	90°00'00"	C69	1.00'	2.01'	1.61'	118°24'15"	C143	1.50'	3.46'	3.39'	132°11'07"	
C10	12.00'	17.51'	10.73'	83°37'14"	C70	8.00'	8.28'	4.54'	59°08'42"	C144	1.50'	3.14'	2.80'	120°00'00"
C11	12.00'	14.38'	8.20'	88°40'35"	C71	3.00'	4.71'	3.00'	90°00'00"	C145	8.50'	6.38'	3.34'	42°51'58"
C12	1.00'	1.94'	1.48'	111°19'25"	C72	2.00'	3.24'	2.48'	150°00'00"	C146	7.50'	2.85'	4.31'	60°00'00"
C13	3.00'	5.08'	3.35'	96°22'48"	C73	30.00'	31.9'	1.80'	06°05'34"	C147	1.00'	2.20'	1.97'	126°09'02"
C14	1.00'	1.94'	1.48'	111°19'25"	C74	1.00'	2.20'	1.97'	126°09'02"	C148	2.50'	4.68'	3.37'	106°52'44"
C15	0.50'	1.03'	0.83'	117°49'05"	C75	8.00'	7.58'	4.08'	53°50'58"	C149	5.00'	10.17'	8.08'	116°33'40"
C16	0.50'	1.03'	0.83'	117°49'05"	C76	1.00'	2.20'	1.97'	126°09'02"	C150	15.00'	19.14'	11.12'	73°07'18"
C17	0.50'	1.03'	0.83'	117°49'05"	C77	8.00'	7.52'	4.08'	53°50'58"	C151	8.00'	7.52'	4.08'	53°50'58"
C18	0.50'	1.03'	0.83'	117°49'05"	C78	2.00'	4.19'	3.48'	120°00'00"	C152	12.00'	13.29'	7.42'	83°56'20"
C19	0.50'	1.03'	0.83'	117°49'05"	C79	2.00'	4.19'	3.48'	120°00'00"	C153	4.00'	12.57'	<infinite>	180°00'00"
C20	0.50'	1.03'	0.83'	117°49'05"	C80	8.00'	8.38'	4.62'	80°00'00"	C154	4.00'	12.57'	<infinite>	180°00'00"
C21	8.00'	8.68'	4.82'	82°10'55"	C81	8.00'	8.38'	4.62'	80°00'00"	C155	4.00'	12.57'	<infinite>	180°00'00"
C22	8.00'	8.68'	4.82'	82°10'55"	C82	8.00'	8.38'	4.62'	80°00'00"	C156	8.00'	8.38'	4.62'	60°00'00"
C23	8.00'	8.68'	4.82'	82°10'55"	C83	2.00'	4.19'	3.48'	120°00'00"	C157	4.00'	6.28'	4.00'	90°00'00"
C24	8.00'	8.68'	4.82'	82°10'55"	C84	2.00'	4.19'	3.48'	120°00'00"	C158	15.00'	21.78'	13.30'	83°06'28"
C25	1.00'	1.94'	1.48'	111°19'25"	C85	4.50'	7.07'	4.50'	89°59'58"	C159	2.50'	4.23'	2.82'	96°33'51"
C26	12.00'	14.38'	8.20'	88°40'35"	C86	4.50'	7.07'	4.50'	90°00'04"	C160	4.00'	6.28'	4.00'	90°00'00"
C27	12.00'	14.38'	8.20'	88°40'35"	C87	4.00'	12.57'	<infinite>	180°00'00"	C161	11.50'	14.51'	8.40'	72°16'05"
C28	1.00'	1.94'	1.48'	111°19'25"	C88	4.00'	12.57'	<infinite>	180°00'00"	C162	2.00'	4.19'	3.48'	120°00'00"
C29	8.00'	7.52'	4.08'	53°50'58"	C89	4.00'	12.57'	<infinite>	180°00'00"	C163	4.50'	14.14'	<infinite>	180°00'00"
C30	0.50'	1.11'	1.00'	126°52'12"	C90	4.00'	7.07'	4.50'	90°00'03"	C164	25.00'	38.27'	25.00'	90°00'00"
C31	12.00'	13.68'	7.84'	86°17'02"	C91	2.00'	4.19'	3.48'	120°00'00"	C165	2.50'	3.93'	2.50'	90°00'00"
C32	8.00'	8.68'	4.82'	82°10'55"	C92	4.50'	7.07'	4.50'	89°59'57"	C166	15.00'	21.54'	15.00'	61°48'00"
C33	8.00'	8.68'	4.82'	82°10'55"	C93	4.50'	7.07'	4.50'	70°31'44"	C				

SCALE 1" = 20'

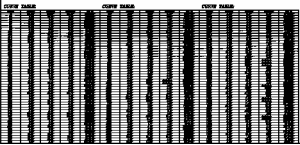


COURTYARD

STAIR NORTH STAIRS



BASE OF FINISH:
 FINISH OF SLAB AT INTERSECTION OF
 WALLS AND PARTITION WALLS
 FINISH OF FLOOR AT INTERSECTION OF
 WALLS AND PARTITION WALLS



VIEW NORTH

VIEW NORTH

VIEW NORTH

PROJECT NO.	DATE
DESIGNED BY	SCALE
DRAWN BY	
CHECKED BY	
APPROVED BY	
PROJECT NAME	
LOCATION	
CLIENT	
ARCHITECT	
ENGINEER	
PLUMBER	
ELECTRICIAN	
Mechanical	
Structural	
Interior	
Exterior	
Site	
Other	



B.560 11-29-65

107 V-9968