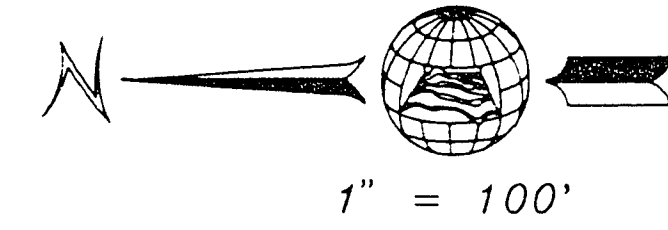


FINAL MAP OF RAINBOW PLAZA - PHASE 2

(A COMMERCIAL SUBDIVISION)

A PORTION OF THE EAST HALF (E 1/2) OF THE SOUTHEAST QUARTER (SE 1/4)
OF SECTION 34, TOWNSHIP 20 SOUTH, RANGE 60 EAST, M.D.M.,
CITY OF LAS VEGAS, CLARK COUNTY, NEVADA.



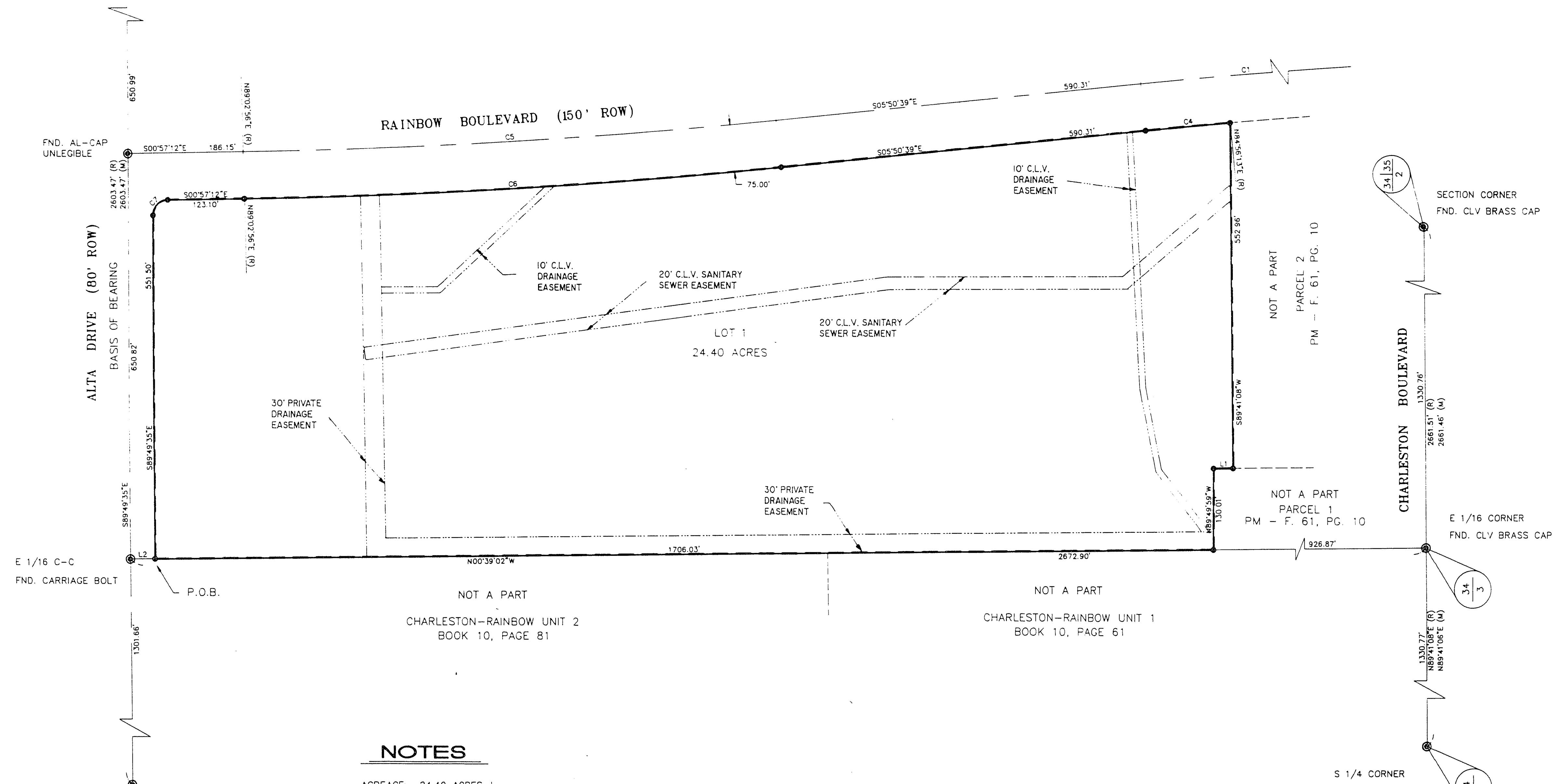
E 1/4 CORNER
FND. NAIL & TAG
RLS 2050

No.	RADIUS	DELTA	LENGTH	TANGENT
C1	10055.85'	03°09'55"	555.53'	277.84'
C2	9980.85'	00°46'52"	136.07'	68.04'
C3	10039.36'	04°53'35"	857.36'	428.94'
C4	10114.36'	04°53'35"	863.77'	432.15'
C5	25.00'	88°52'23"	38.78'	24.52'

No.	BEARING	DISTANCE
L1	N00°39'02"W	30.77'
L2	N00°39'02"W	40.00'

LEGEND

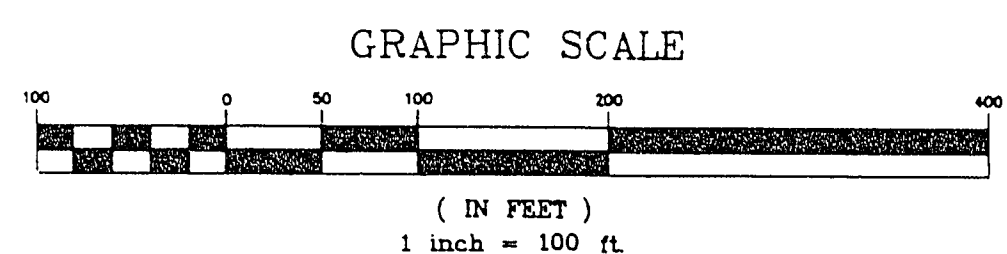
- BOUNDARY LINE
- SET TYPE III MONUMENT
PLS # 8431
- ⊙ FOUND POINT AS NOTED
- (R) RADIAL BEARING
- C1 CURVE NUMBER
- L1 LINE NUMBER



C 1/4 CORNER
FND. AL-CAP
RLS 2050

NOTES

ACREAGE: 24.40 ACRES ±
REFERENCES
PM - F. 61, PG. 10



S 1/4 CORNER
FND. CLV BRASS CAP

SHEET 2 of 2

Church Engineering of Nevada, Inc.
 Consulting Engineers 6600 W. Charleston Blvd.
 Planners Suite 140
 Las Vegas, Nv. 89102
 Surveyors (702) 878-6244

BOOK 52 PAGE 42
Plat for 107-V-1989