

| | | |
|--|---------------|----------|
| DESIGNED BY: RF | DRAWN BY: RD | CHKD BY: |
| JOB NUMBER: 693-003-982 | DATE: 7-21-98 | |
| REVISION | DATE APPL | |
| NO. | | |
| ADD TRACK-ON ISLAND OPTICAL PER DWG. NO. 221 | | |

L. R. NELSON CONSULTING ENGINEERS, INC.
 3035 East Patrick Lane Suite 9
 Las Vegas, Nevada 89120
 (702) 798-7978
 (702) 451-2296 FAX

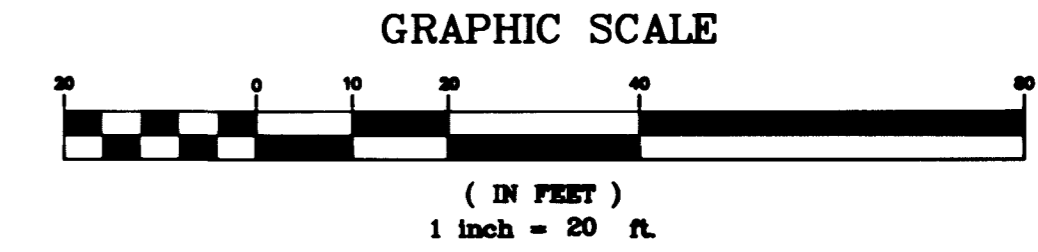
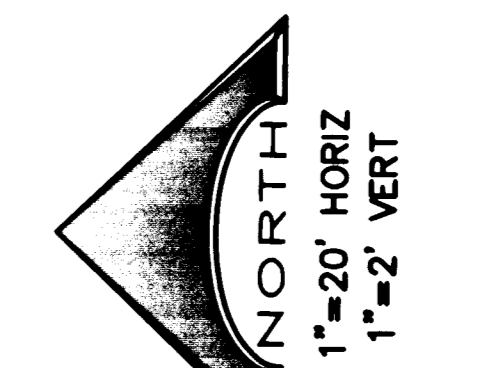
• STRUCTURAL
 • CIVIL
 • SURVEY

PLAN AND PROFILE - RAINBOW BOULEVARD
 STA. 10+00.00 TO STA. 14+00.00

RAINBOW CORPORATE CENTER
 BORMAN DEVELOPMENT

CITY OF LAS VEGAS NEVADA

SHEET NUMBER
4
 OF 12 SHEETS
 693-003-982



DISCLAIMER NOTE

UTILITY LOCATIONS SHOWN HEREON ARE APPROXIMATE ONLY. IT SHALL BE THE CONTRACTOR'S RESPONSIBILITY TO DETERMINE THE EXACT HORIZONTAL AND VERTICAL LOCATION OF ALL EXISTING UNDERGROUND AND OVERHEAD UTILITIES PRIOR TO COMMENCING CONSTRUCTION. NO REPRESENTATION IS MADE THAT ALL EXISTING UTILITIES ARE SHOWN HEREON. THE ENGINEER ASSUMES NO RESPONSIBILITY FOR UTILITIES NOT SHOWN OR UTILITIES NOT SHOWN IN THEIR PROPER LOCATION.

Avoid cutting underground utility lines. If's costly.
Call before you Dig
 1-800-227-2600
 (NATIONAL SERVICE LINE)

Avoid overhead power line contact
Call before you OVERHEAD
 1-702-593-6111
 (NEVADA POWER CORPORATION AND SAFETY SERVICES REPRESENTATIVE)

CONSTRUCTION NOTES

- 1 CONSTRUCT TYPE "A" CURB PER DETAIL
- 2 CONSTRUCT TYPE "L" CURB AND GUTTER PER STD. DWG. NO. 216 AND N.D.O.T. STANDARD DWG #R-5.1.1(613) TYPE 5
- 3 CONSTRUCT 8' WIDE VALLEY GUTTER PER STD. DWG. NO. 228
- 4 CONSTRUCT SIDEWALK RAMP PER STD. DWG. NO. 235, CASE I AND N.D.O.T. STANDARD DWG #R-5.1.1.2(613)
- 5 CONSTRUCT 5' WIDE CONCRETE SIDEWALK PER STD. DWG. NO. 234 AND N.D.O.T. STANDARD DWG # R-5.1.1.1(613)
- 6 CONSTRUCT MEDIAN ISLAND PER STD. DWG. NO. 218, (OR DWG. NO. 221)
- 7 CONSTRUCT SWALE AND BUS TURNOUT PER STD. DWG. NO. 234.1
- 8 CONSTRUCT SIDEWALK UNDER DRAIN PER STD. DWG. NO. 236
- 9 CONSTRUCT PLANTER DRAIN PER DETAIL
- 10 CONSTRUCT 15' WIDE CROSS GUTTER PER
- 11 CONSTRUCT 4" A.C. PAVEMENT OVER 4" TYPE II OVER 9" TYPE I GRAVEL BASE PER STD. DWG #203.
- 12 REMOVE EXISTING A.C. PAVEMENT AS SHOWN BY SAWCUT LINE
- 13 CONSTRUCT SIDEWALK RAMP PER STD. DWG. NO. 235, CASE II AND N.D.O.T. STANDARD DWG. # R-5.1.1.2(613)

BASIS OF BEARING

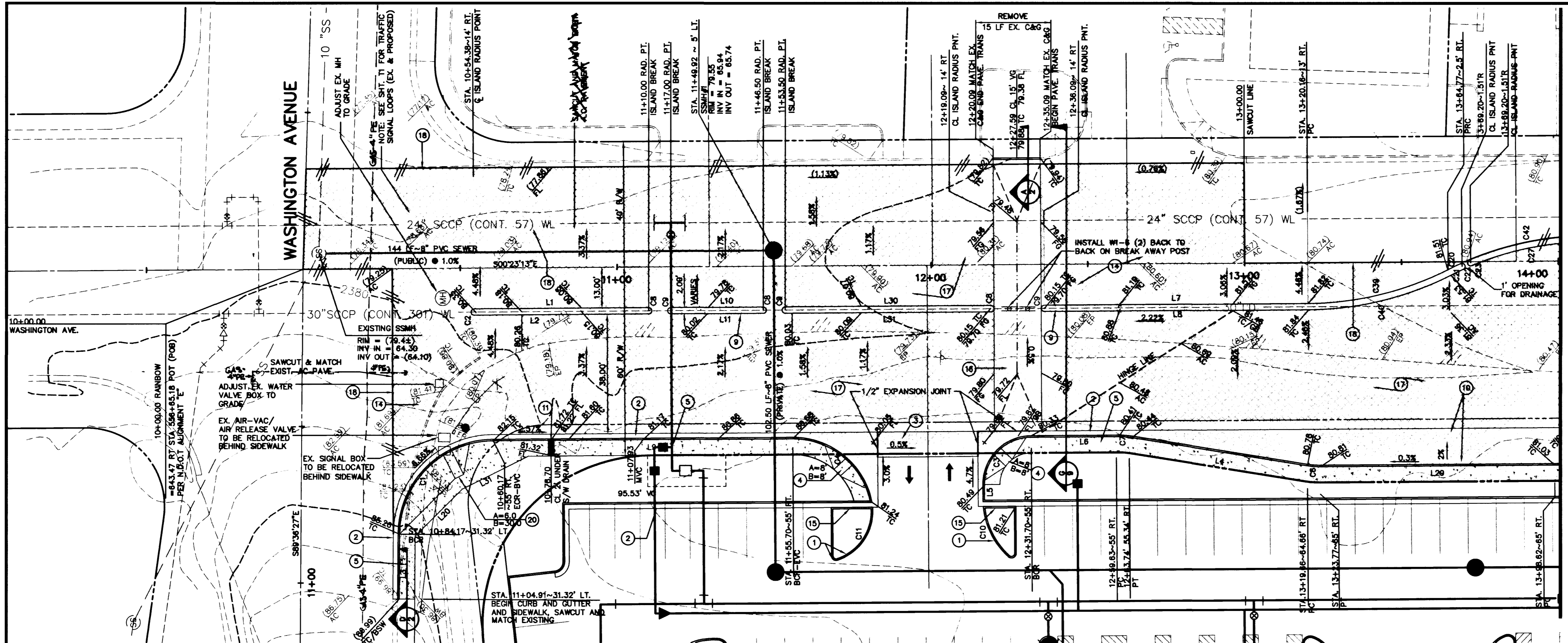
SOUTH 89°36'27" EAST, BEING THE BEARING OF THE NORTH LINE OF THE NORTHWEST QUARTER (NW 1/4) OF THE SOUTHEAST QUARTER (SE 1/4) OF SECTION 27, TOWNSHIP 20 SOUTH, RANGE 90 EAST, M.D.M., AS SHOWN ON A MAP ON FILE IN FILE 56, PAGE 96 OF SURVEY IN THE CLARK COUNTY, NEVADA RECORDER'S OFFICE

BENCHMARK

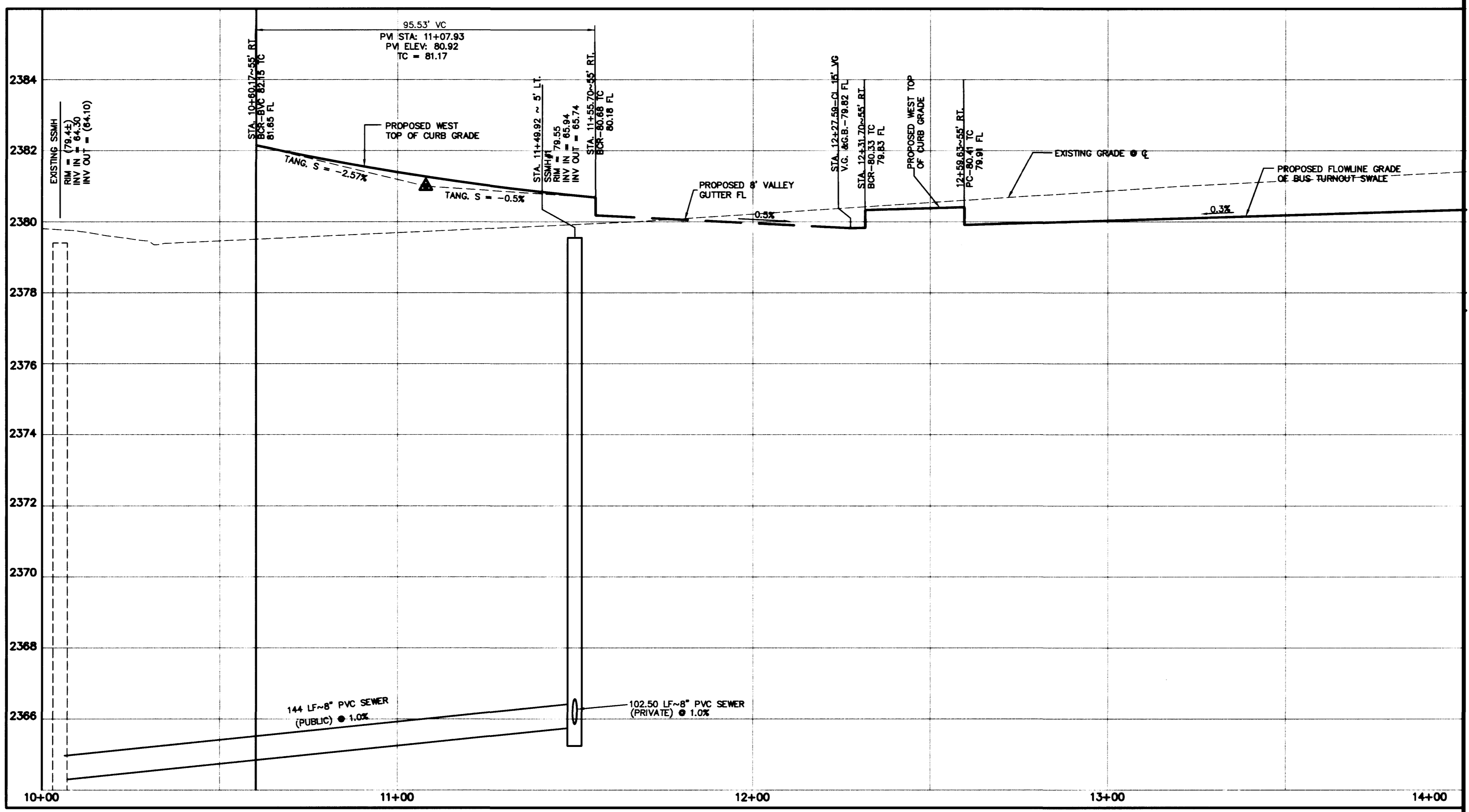
11V00-26W4
 ELEVATION = 724.7549 METERS (NAVOD88)
 2377.80'

RIVET AND PLATE IN TOP OF CURB, NORTHEAST RETURN OF RAINBOW BOULEVARD AND WASHINGTON AVENUE.

NOTE: SEE SHEET 5 FOR CURVE AND LINE TABLES



RAINBOW BOULEVARD



MATCH LINE SEE SHEET 5

MATCH LINE SEE SHEET 5

