

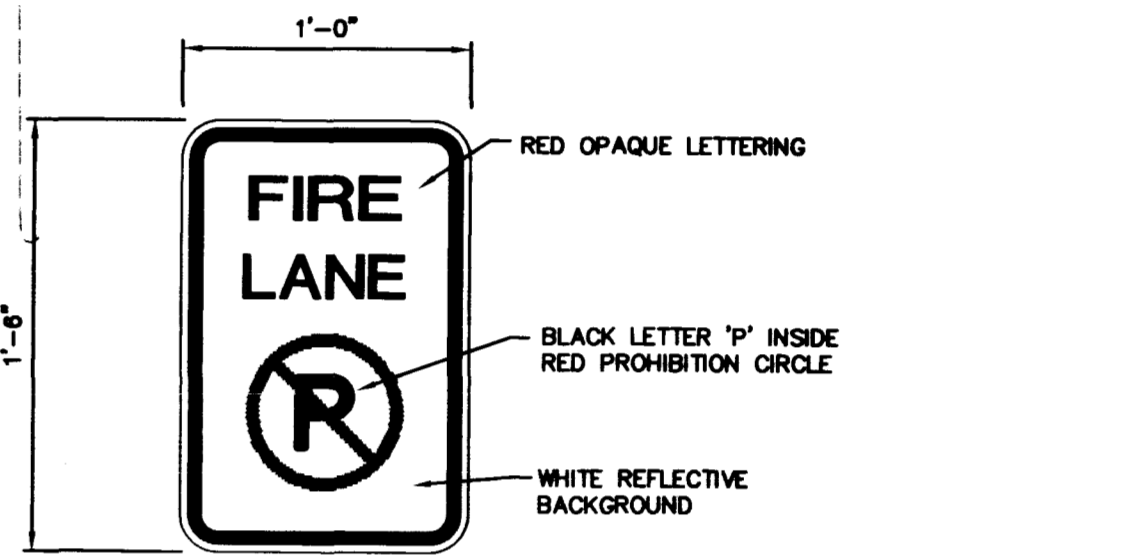
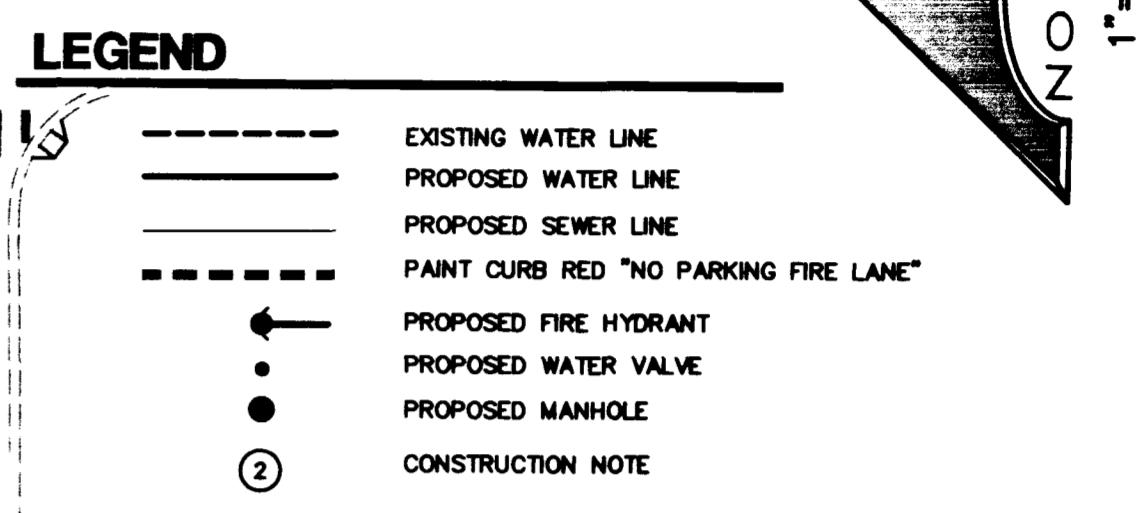
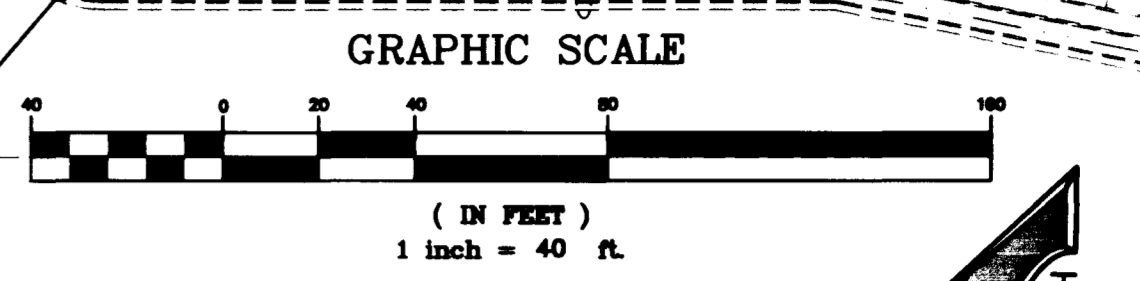
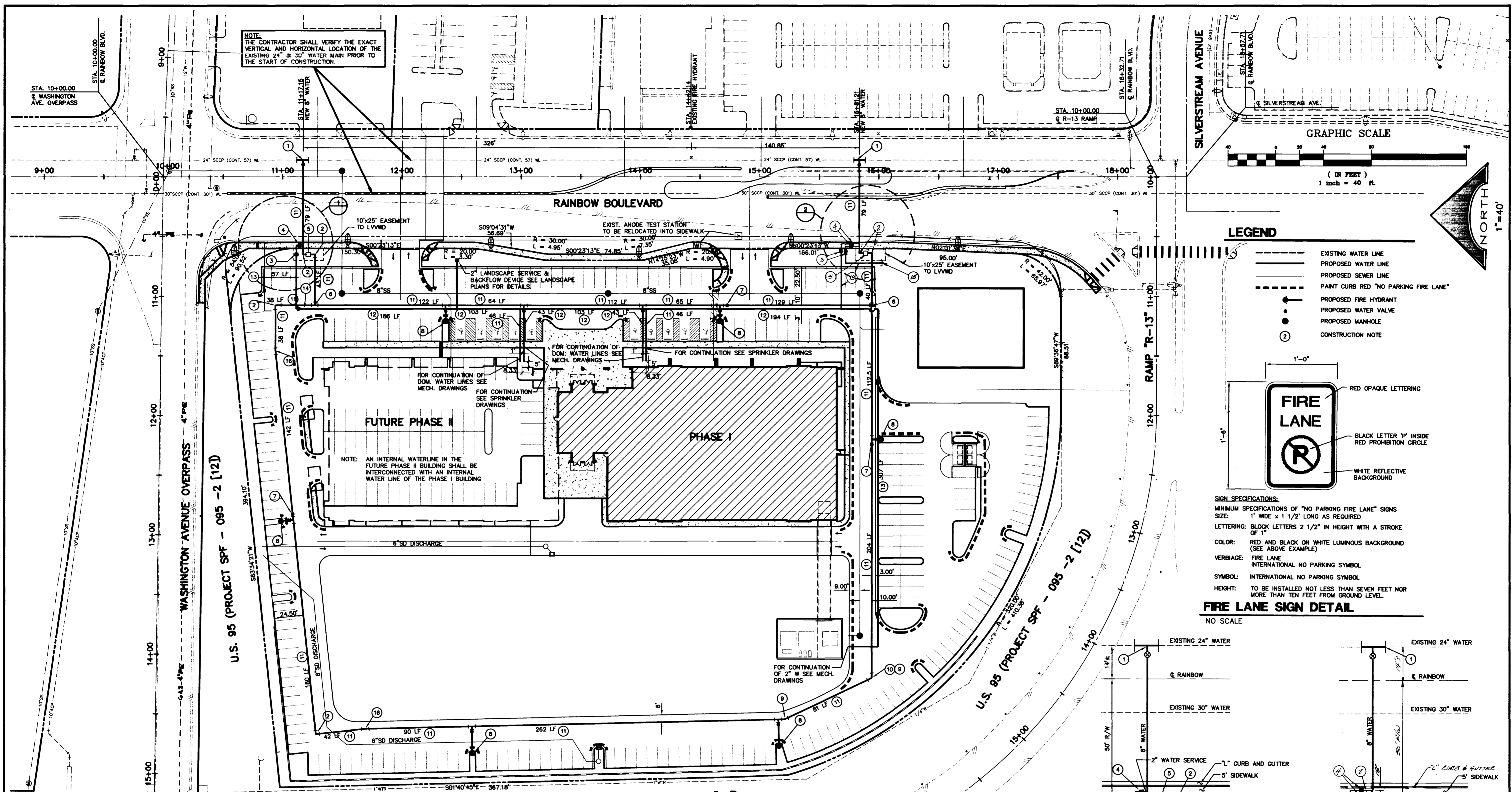
DESIGNED BY: RF	DRAWN BY: SW	CHECKED BY:
JOB NUMBER: 693-003-962	DATE: 5-28-97	
REVISION	DATE	APPL
NO.		

**L. R. NELSON CONSULTING ENGINEERS, INC.**  
 3035 East Patrick Lane Suite 9  
 Las Vegas, Nevada 89120  
 (702) 798-7978  
 (702) 451-2296 FAX

• STRUCTURAL  
 • CIVIL  
 • SURVEY

WATER PLAN  
**RAINBOW CORPORATE CENTER**  
 BORMAN DEVELOPMENT  
 CITY OF LAS VEGAS  
 NEVADA

SHEET NUMBER  
**6**  
 OF 9 SHEETS  
 693-003-962



**FIRE LANE SIGN SPECIFICATIONS:**  
 MINIMUM SPECIFICATIONS OF "NO PARKING FIRE LANE" SIGN SIZE: 1' WIDE x 1 1/2' LONG AS REQUIRED  
 LETTERING: BLOCK LETTERS 2 1/2" IN HEIGHT WITH A STROKE OF 1"  
 COLOR: RED AND BLACK ON WHITE LUMINOUS BACKGROUND (SEE ABOVE EXAMPLE)  
 VERBIAGE: FIRE LANE INTERNATIONAL NO PARKING SYMBOL  
 SYMBOL: INTERNATIONAL NO PARKING SYMBOL  
 HEIGHT: TO BE INSTALLED NOT LESS THAN SEVEN FEET NOR MORE THAN TEN FEET FROM GROUND LEVEL

**ESTIMATE OF QUANTITIES**

1	24"x24"x8" KOPPEL TAP W/8" TAPPING VALVE	2 EA
2	8"x90" ELBOW	6 EA
3	2" RPPA	3 EA
4	2" METER & SERVICE	3 EA
5	8" DOUBLE CHECK DETECTOR ASSEMBLY	2 EA
6	8"x8"x8" TEE	2 EA
7	8" GATE VALVE	3 EA
8	FIRE HYDRANT ASSEMBLY (PRIVATE)	6 EA
9	8"x22 1/2" ELBOW	1 EA
10	8"x45" ELBOW	1 EA
11	8" PVC WATER MAIN	1809 LF
12	3" PVC WATER MAIN	556 LF
13	2" PVC WATER MAIN	194 LF
14	2"x3" REDUCER	1 EA
15	2" PVC CAP	1 EA
16	8"x11 1/4" ELBOW	2 EA

\* FIRE HYDRANT ASSEMBLY INCLUDES TEE, GATE VALVE, RISER, THRUST BLOCK AND ALL OTHER HARDWARE. PER UDACS STD. DWG. No. 7

\*\* 24" SCOP ~ 10 GA., 0.1345" 3/4" MORTAR LINING, 3/4" MORTAR COATING, 12 GA. SPIRAL WOUND STEEL REINFORCING @ 1 1/2" SPACING

**BENCHMARK**  
 1LV00-26N4  
 ELEVATION = 724.7549 METERS (NAVDD83)  
 2377.80'

RIVET AND PLATE IN TOP OF CURB, NORTHEAST RETURN OF RAINBOW BOULEVARD AND WASHINGTON AVENUE.

**OWNER/DEVELOPER**  
 BORMAN DEVELOPMENT  
 3120 MEAD AVENUE  
 LAS VEGAS, NEVADA 89102  
 (702) 876-8686

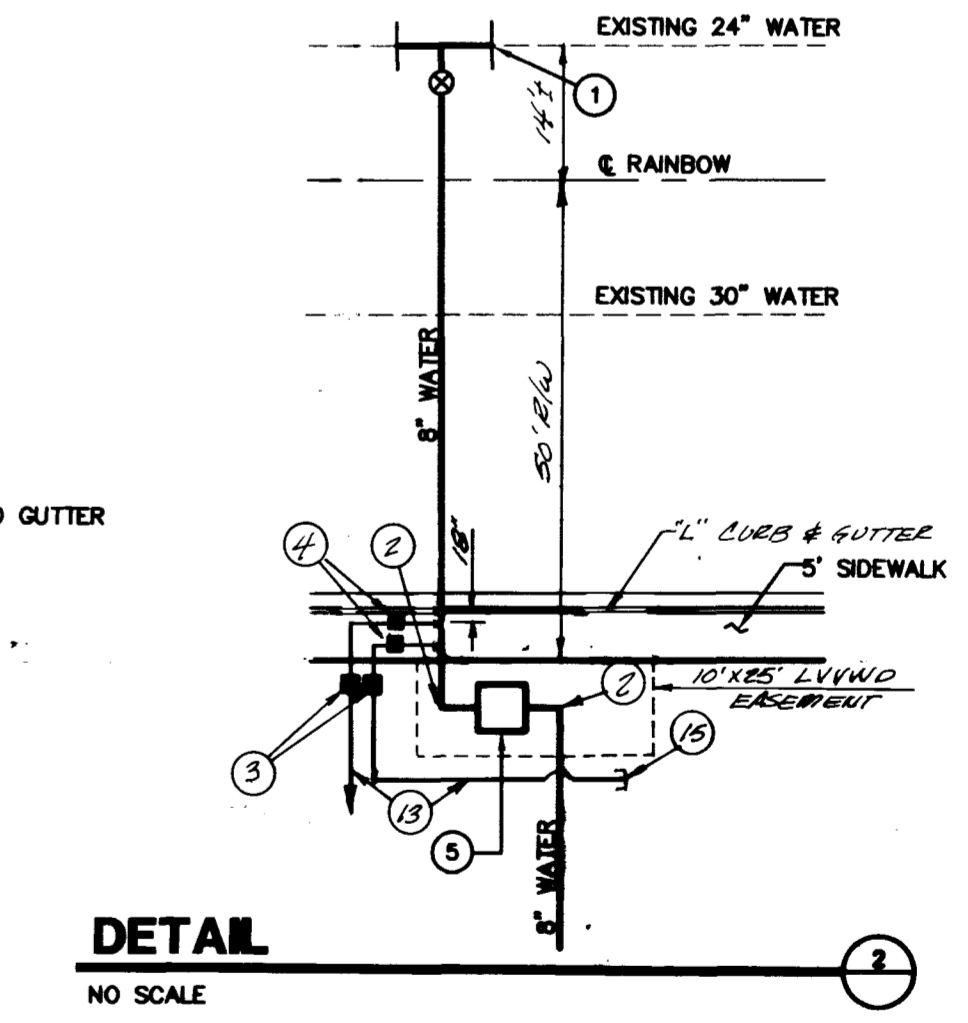
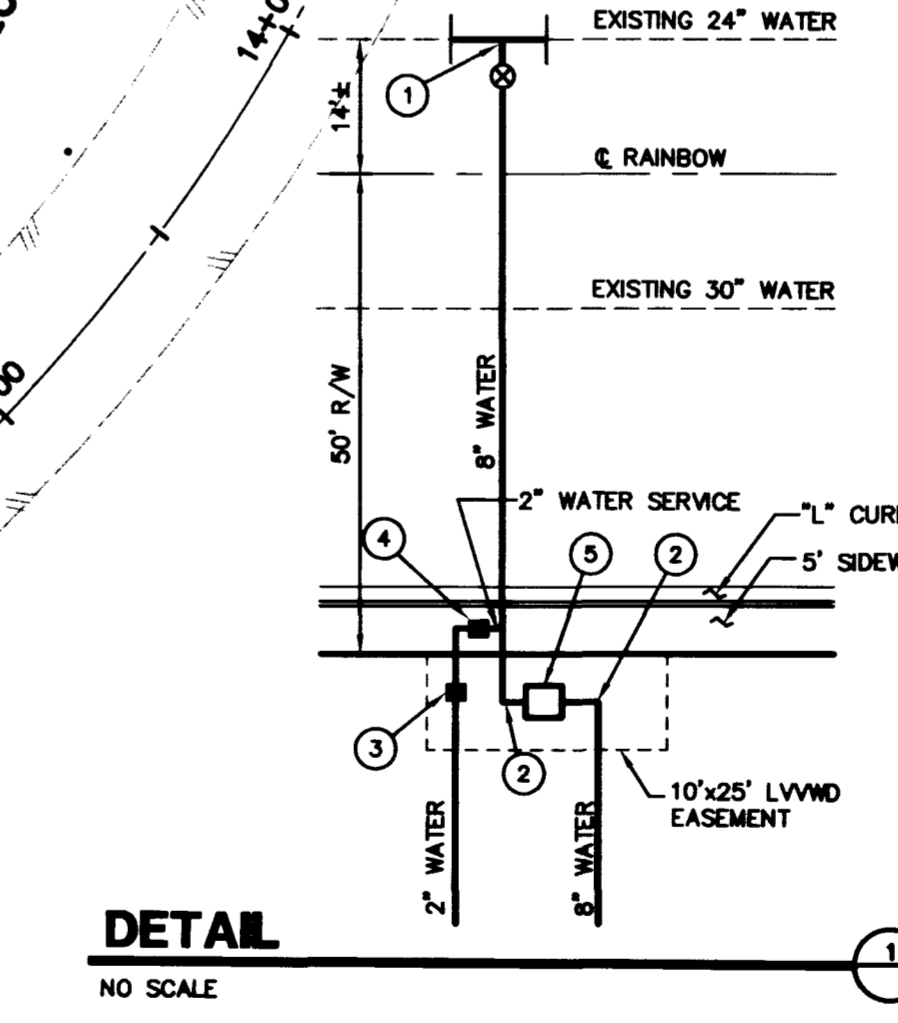
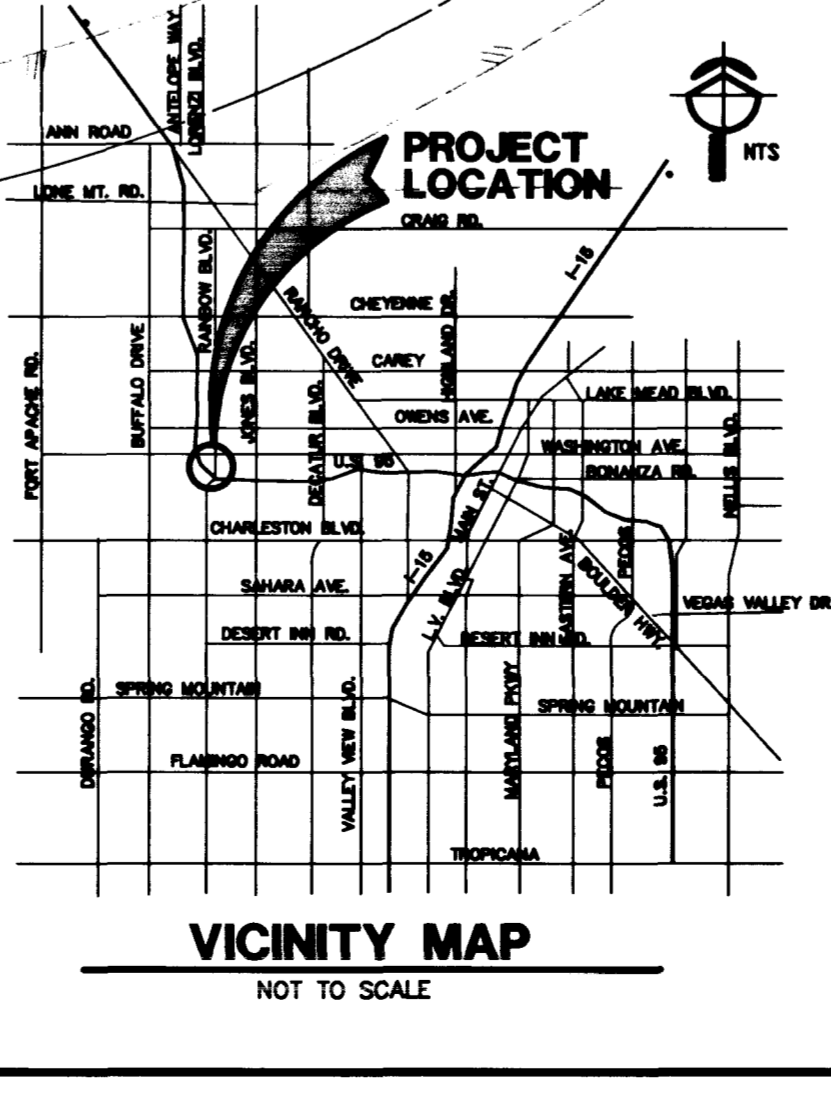
**BASIS OF BEARING**  
 SOUTH 89°36'27" EAST, BEING THE BEARING OF THE NORTH LINE OF THE NORTHWEST QUARTER (NW 1/4) OF THE SOUTHEAST QUARTER (SE 1/4) OF SECTION 27, TOWNSHIP 20 SOUTH, RANGE 60 EAST, M.D.M., AS SHOWN ON A MAP ON FILE IN FILE 56, PAGE 96 OF SURVEYED IN THE CLARK COUNTY, NEVADA RECORDER'S OFFICE.

**REDUCED PRESSURE PRINCIPAL ASSEMBLY (3) - 2"**  
 APPROVED REDUCED PRESSURE PRINCIPAL ASSEMBLY(S) [RPPA] SHALL BE INSTALLED PER THE STANDARD PLATE No. 11A. NO WATER SHALL BE TAKEN FROM A SERVICE REQUIRING BACKFLOW PREVENTION UNTIL THE REDUCED PRESSURE PRINCIPAL ASSEMBLY HAS BEEN SUCCESSFULLY TESTED BY THE LVVMD.

ANY BLOCK WALL OR OTHER FENCE MATERIAL SHALL BE DESIGNED AND CONSTRUCTED AROUND THE OUTSIDE OF THE EASEMENT(S), SO AS TO ALLOW THE DISTRICT ACCESS TO THE VAULT(S) FROM THE ADJACENT RIGHT-OF-WAY.

**DOUBLE CHECK VALVE ASSEMBLY (2) - 8"**  
 APPROVED DOUBLE CHECK VALVE ASSEMBLY(S) SHALL BE INSTALLED PER THE DISTRICT'S STANDARD PLATE No. 20B.

ANY BLOCK WALL OR OTHER FENCE MATERIAL SHALL BE DESIGNED AND CONSTRUCTED AROUND THE OUTSIDE OF THE EASEMENT(S), SO AS TO ALLOW THE DISTRICT ACCESS TO THE VAULT(S) FROM THE ADJACENT RIGHT-OF-WAY.



**FIRE FLOW INFORMATION**

FIRE FLOW REQUIREMENT IS: 2,750 GALLONS PER MINUTE AT 20 PSI RESIDUAL PRESSURE.

BASED ON:  
 SQUARE FOOTAGE: 149,043 S.F.  
 LARGEST AREA BETWEEN 4-HOUR AREA SEPARATION WALLS: 149,043 S.F.  
 BUILDING HEIGHT: FEET  
 NUMBER OF STORIES: 3 FLOORS  
 TYPE OF CONSTRUCTION: III ONE HOUR  
 OCCUPANCY: COMM.  
 FULL AUTOMATIC SPRINKLERS SYSTEM: YES  
 REVIEWED BY: Amy Cheng  
 DATE: 7/9/98

**APPROVALS**

Las Vegas Valley Water District  
 DATE: 7/18/98

City of Las Vegas  
 DATE: 7/22/98

APPROVAL OF THESE PLANS SHALL NOT BE CONSTRUED TO BE A PERMIT FOR, OR AN APPROVAL OF, ANY VIOLATION OF ANY OF THE PROVISIONS OF THE STATE OR COUNTY LAWS. FIRE FLOW 2750 GPM AT 20 P.S.I. RESIDUAL.

