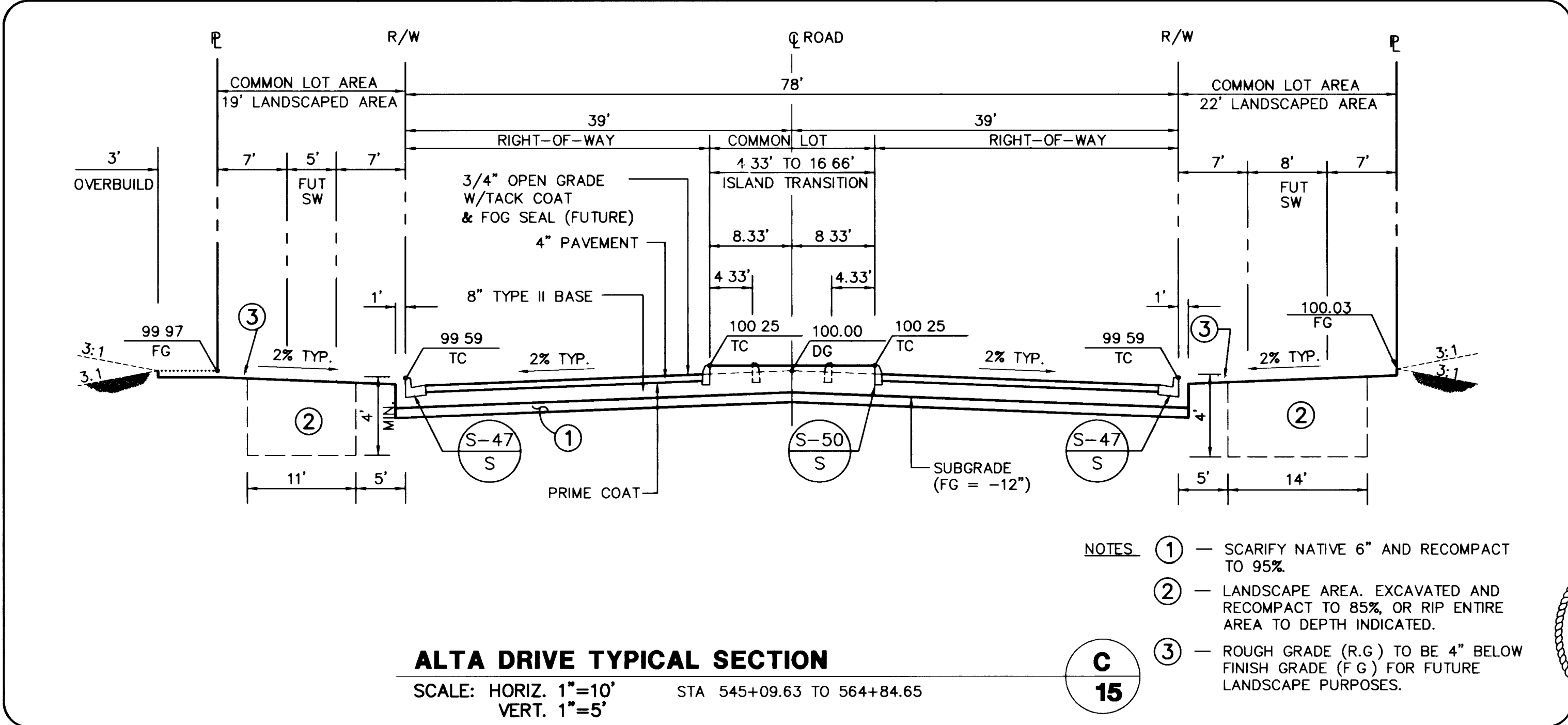


**RECORD DRAWINGS**

THESE PLANS SHOW RECORD INFORMATION RECEIVED FROM:  
 CONTRACTOR: WELLS CARGO, INC. (WET UTILITY IMP.) 3/2/98  
 CONTRACTOR: WELLS CARGO, INC. (ROADWAY IMPROVEMENTS) 3/2/98

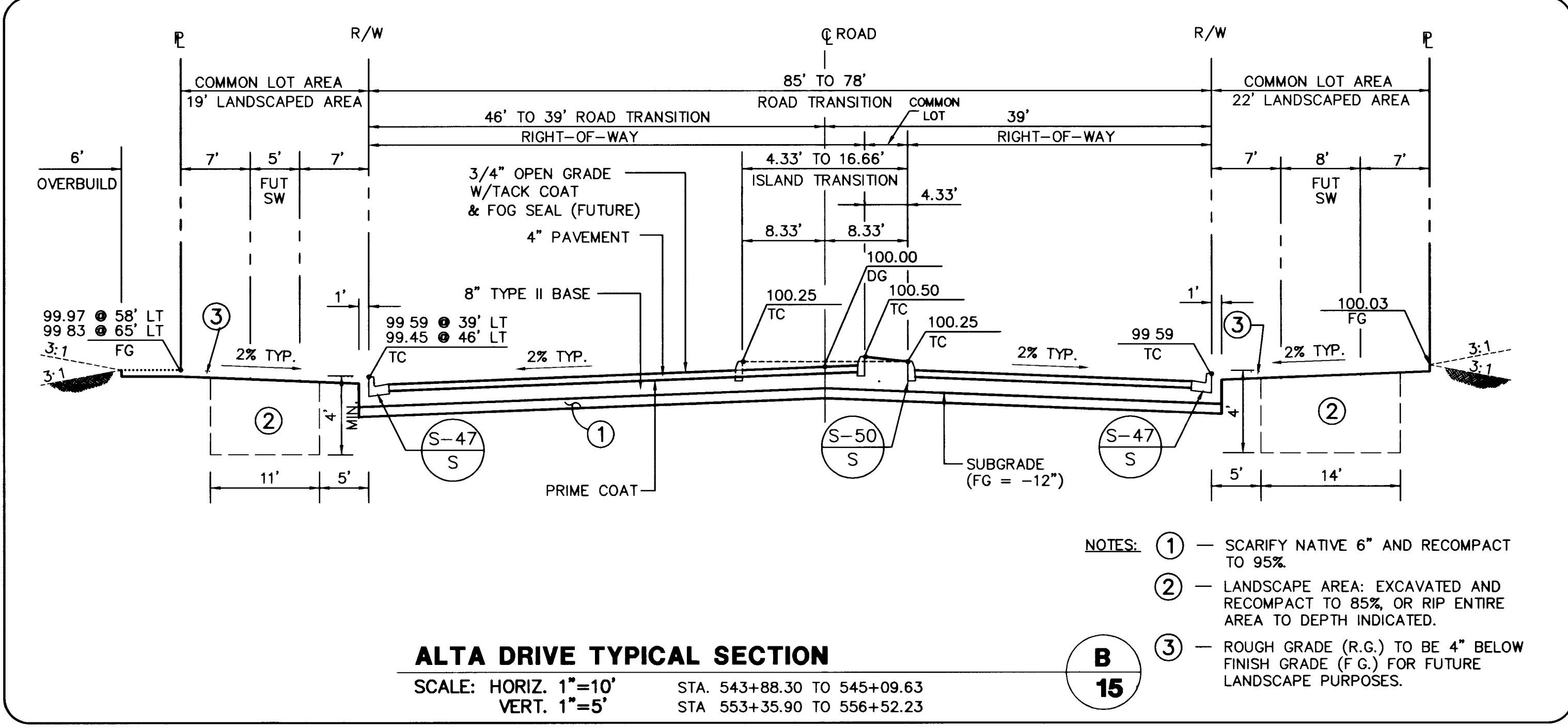
THIS DATA MAY OR MAY NOT REFLECT THE ACTUAL FIELD LOCATIONS.  
 ALL DATA SHOULD BE CONFIRMED PRIOR TO USE ON DEVELOPMENT OR  
 ENGINEERING PLANS.



**ALTA DRIVE TYPICAL SECTION**

SCALE: HORIZ. 1"=10' STA 545+09.63 TO 564+84.65  
 VERT. 1"=5'

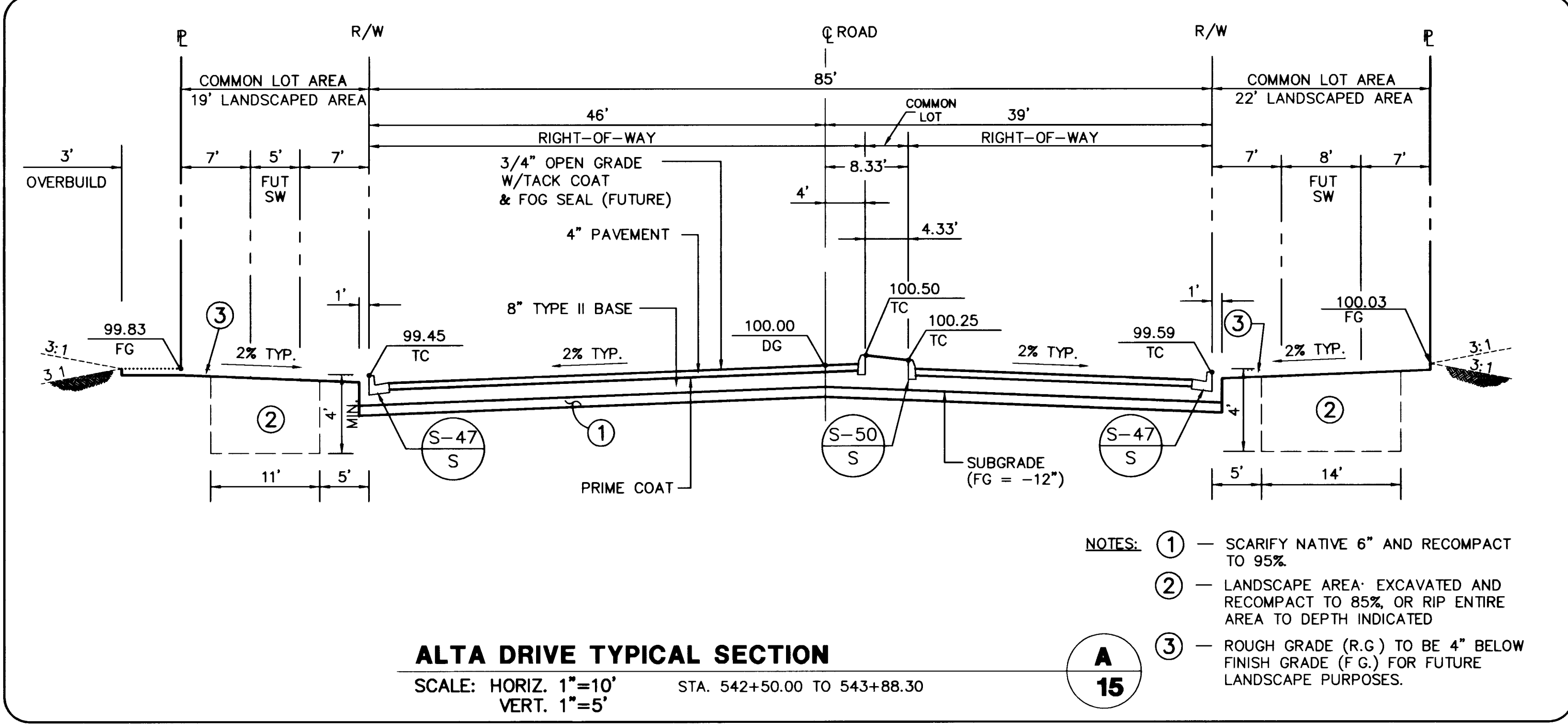
- NOTES:**
- ① - SCARIFY NATIVE 6" AND RECOMPACT TO 95%
  - ② - LANDSCAPE AREA, EXCAVATED AND RECOMPACT TO 85%, OR RIP ENTIRE AREA TO DEPTH INDICATED.
  - ③ - ROUGH GRADE (R.G.) TO BE 4" BELOW FINISH GRADE (F.G.) FOR FUTURE LANDSCAPE PURPOSES.



**ALTA DRIVE TYPICAL SECTION**

SCALE: HORIZ. 1"=10' STA 543+88.30 TO 545+09.63  
 VERT. 1"=5'

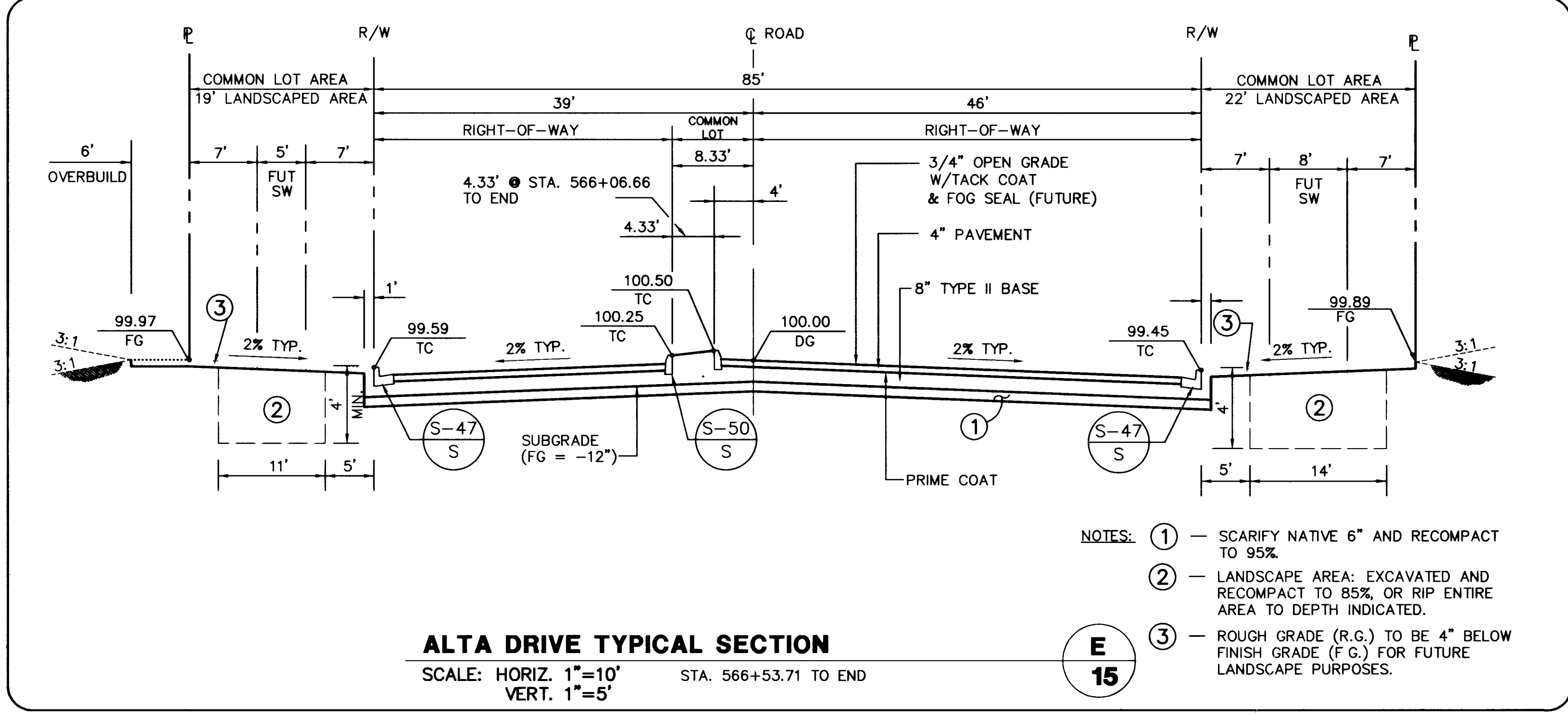
- NOTES:**
- ① - SCARIFY NATIVE 6" AND RECOMPACT TO 95%
  - ② - LANDSCAPE AREA, EXCAVATED AND RECOMPACT TO 85%, OR RIP ENTIRE AREA TO DEPTH INDICATED.
  - ③ - ROUGH GRADE (R.G.) TO BE 4" BELOW FINISH GRADE (F.G.) FOR FUTURE LANDSCAPE PURPOSES.



**ALTA DRIVE TYPICAL SECTION**

SCALE: HORIZ. 1"=10' STA 542+50.00 TO 543+88.30  
 VERT. 1"=5'

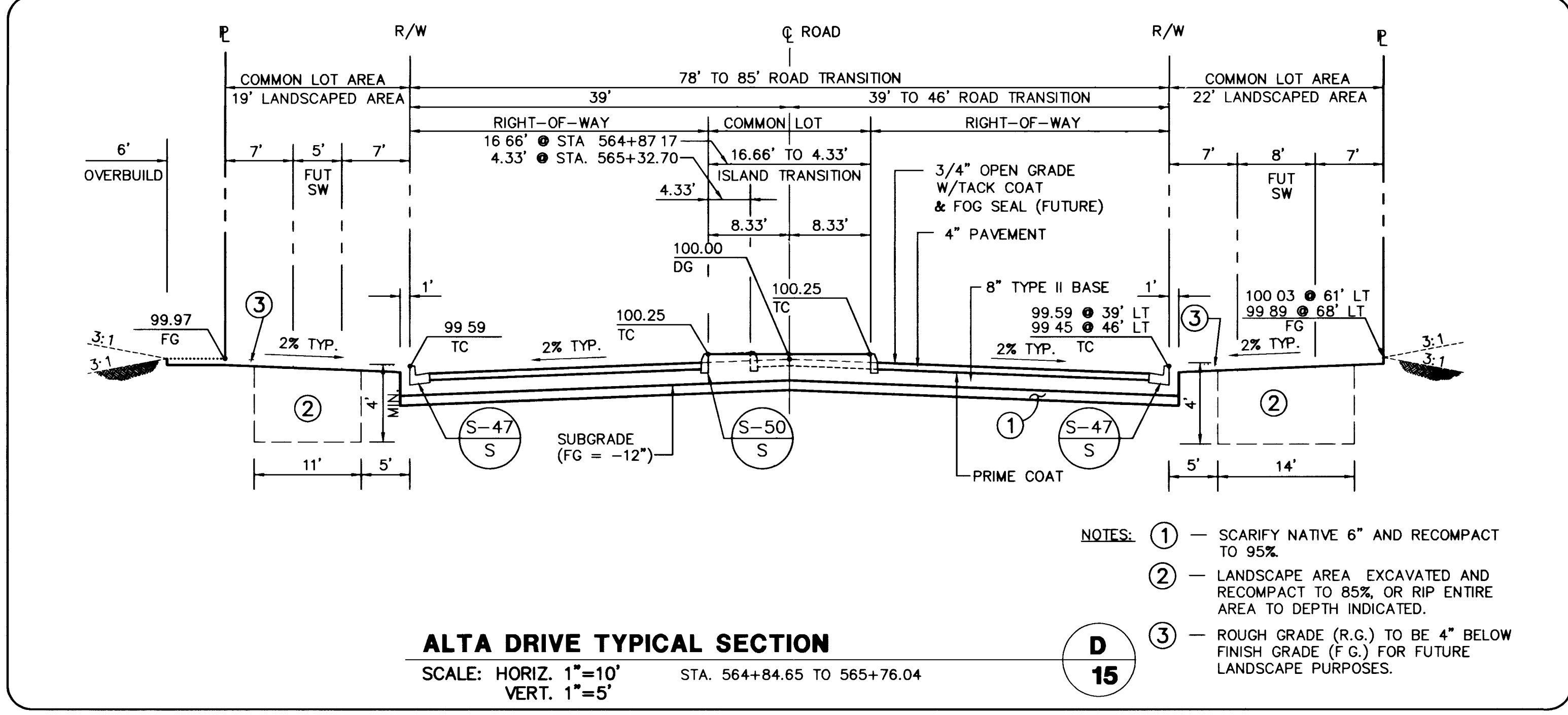
- NOTES:**
- ① - SCARIFY NATIVE 6" AND RECOMPACT TO 95%
  - ② - LANDSCAPE AREA, EXCAVATED AND RECOMPACT TO 85%, OR RIP ENTIRE AREA TO DEPTH INDICATED.
  - ③ - ROUGH GRADE (R.G.) TO BE 4" BELOW FINISH GRADE (F.G.) FOR FUTURE LANDSCAPE PURPOSES.



**ALTA DRIVE TYPICAL SECTION**

SCALE: HORIZ. 1"=10' STA 566+53.71 TO END  
 VERT. 1"=5'

- NOTES:**
- ① - SCARIFY NATIVE 6" AND RECOMPACT TO 95%
  - ② - LANDSCAPE AREA, EXCAVATED AND RECOMPACT TO 85%, OR RIP ENTIRE AREA TO DEPTH INDICATED.
  - ③ - ROUGH GRADE (R.G.) TO BE 4" BELOW FINISH GRADE (F.G.) FOR FUTURE LANDSCAPE PURPOSES.



**ALTA DRIVE TYPICAL SECTION**

SCALE: HORIZ. 1"=10' STA 564+84.65 TO 565+76.04  
 VERT. 1"=5'

- NOTES:**
- ① - SCARIFY NATIVE 6" AND RECOMPACT TO 95%
  - ② - LANDSCAPE AREA, EXCAVATED AND RECOMPACT TO 85%, OR RIP ENTIRE AREA TO DEPTH INDICATED.
  - ③ - ROUGH GRADE (R.G.) TO BE 4" BELOW FINISH GRADE (F.G.) FOR FUTURE LANDSCAPE PURPOSES.

APPROVAL DATE  
 ADD RECORD DRAWING INFO. DESCRIPTION DATE  
 RECOMMENDED BY DATE  
 G.C. WALLACE, INC. Engineering/Architecture 1555 SOUTH RANNEY BLVD LAS VEGAS, NEVADA 89102  
 SUMMERLIN ALTA DRIVE TYPICAL STREET SECTIONS  
 SHEET 15 OF 16  
 SHT 15 OF 16

JOB NO. 62003.207

SAB, ALTA-SEC.DWG, 04/12/98

760

S.I.D. 707 PROJECT NO. 8B, 8C, 8D 107-V2509

2-2-39

