

CURVE DATA (1) INDICATES CURVE NUMBER

CURVE	DELTA	RADIUS	LENGTH	TANGENT
1	00°27'26"	1196.00'	9.54'	4.77'
2	00°27'26"	1191.67'	9.51'	4.75'
3	180°00'00"	2.16'	6.79'	---
4	91°12'02"	31.00'	49.34'	31.66'
5	93°09'43"	30.00'	48.78'	31.70'
6	07°08'17"	1204.00'	150.00'	75.10'
7	09°55'48"	1154.00'	200.00'	100.25'
8	23°12'14"	1239.00'	501.78'	254.37'
9	14°59'40"	300.00'	78.51'	39.48'
10	1°23'25"	1208.33'	368.55'	184.69'
11	06°43'30"	300.00'	45.21'	17.63'
12	09°01'16"	300.00'	47.23'	23.67'
13	11°24'21"	300.00'	59.72'	29.96'
14	04°47'09"	1191.67'	88.79'	44.42'
15	02°16'57"	1161.00'	46.14'	23.07'

CONSTRUCTION NOTES

- IMPROVEMENTS**
- 1. INSTALL "A" TYPE CURB (S-50)
 - 2. INSTALL "L" TYPE CURB & GUTTER (S-47)
 - 3. INSTALL 4" A.C. PAVEMENT OVER 8" TYPE II BASE
 - 4. INSTALL CROSSWALK (S-78)
 - 5. INSTALL DEPRESSED CURB (A-13)

- WATER**
- 1. INSTALL 12" DIA. WATER PIPE (U-20)
 - 2. INSTALL 8" DIA. WATER PIPE (U-20)
 - 3. INSTALL 12" DIA. GATE VALVE & BOX (U-34)
 - 4. INSTALL 16" DIA. GATE VALVE & BOX (U-34)
 - 5. INSTALL 2" TEMP. BLOW-OFF (U-32)
 - 6. INSTALL FIRE HYDRANT ASSEMBLY (U-33)

- STORM DRAIN - ALL S.D. PIPE CLASS 1350-D**
- 1. INSTALL 24" DIA. STORM DRAIN PIPE (U-20)
 - 2. INSTALL 30" DIA. STORM DRAIN PIPE (U-20)
 - 3. INSTALL 36" DIA. STORM DRAIN PIPE (U-20)
 - 4. INSTALL 54" DIA. STORM DRAIN PIPE (U-20)
 - 5. INSTALL 60" DIA. STORM DRAIN PIPE (U-20)
 - 6. INSTALL STORM DRAIN MANHOLE (D-4)
 - 7. INSTALL 6" TYPE "A" DROP INLET (D-12)

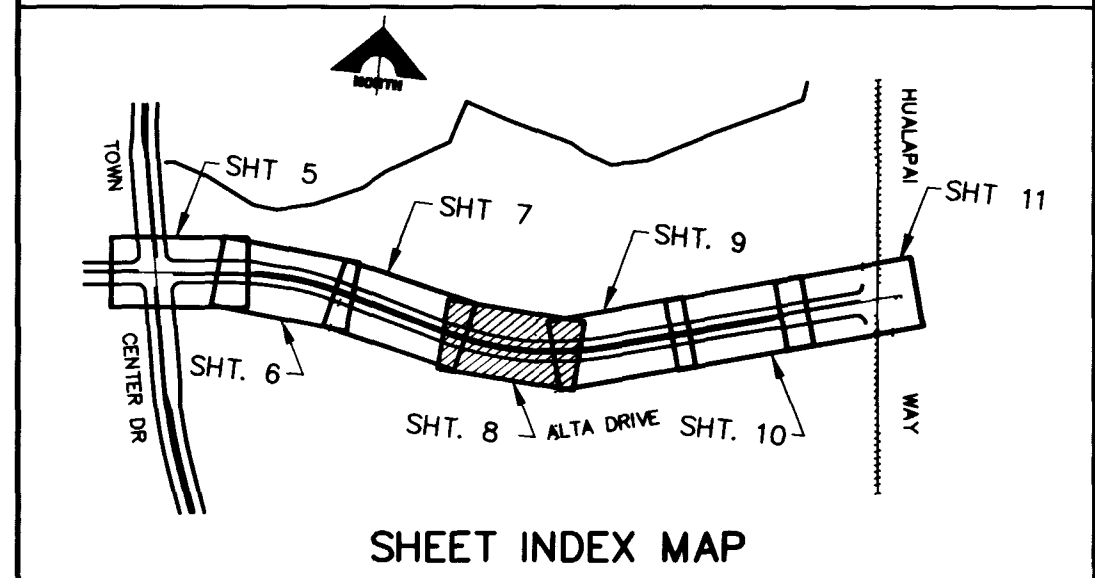
- SEWER**
- 1. INSTALL 8" DIA. SEWER PIPE (U-20)
 - 2. INSTALL 60" DIA. SEWER MANHOLE (SD1-8)
 - 3. INSTALL 21" DIA. SEWER PIPE (U-20)

- STREET LIGHTING**
- 1. INSTALL STREET LIGHT, SEE ELECTRICAL PLANS (E-2)
 - 2. STREET LIGHT OR COMMON TRENCH, SEE ELECTRICAL PLANS

- TRAFFIC**
- 1. INSTALL 1-3" CONDUIT
 - 2. INSTALL NO. 5 PULLBOX (E-32)

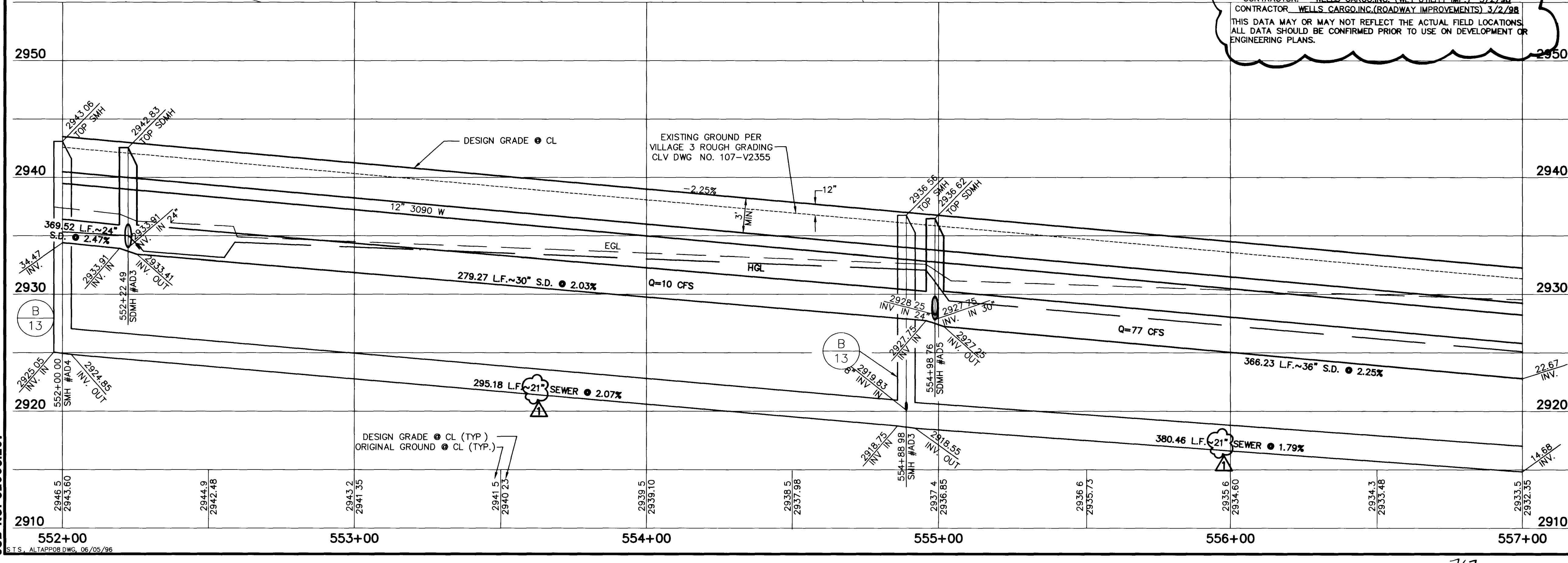
- IRRIGATION**
- 1. BANK "A": 1-6" & 2-4" SLEEVES SDR 35 PVC (U-18)
 - 2. BANK "B": 2-4" SLEEVES SDR 35 PVC (U-18)
 - 3. BANK "C": 1-6" & 3-4" SLEEVES SDR 35 PVC (U-18)

NOTE: ALL COMMON LOTS AS SHOWN HEREIN TO BE PRIVATELY MAINTAINED BY THE H.O.A.



APPROVAL:
 1st 11 2 2/22/96
 LAS VEGAS VALLEY WATER DISTRICT
 DATE: 4/16/96

RECOMMENDED
 BERT A. HUGHES
 CIVIL ENGINEER
 1555 SOUTH HANDBY BLVD./LAS VEGAS, NEVADA 89102
 G.C. WALLACE, INC.
 Engineering/Architecture
 1555 SOUTH HANDBY BLVD./LAS VEGAS, NEVADA 89102
 SUMMERLIN
 ALTA DRIVE - TOWN CENTER DR. TO HUALAPAI
 PLAN & PROFILE
 552+00 TO 557+00
 SHEET 8 OF 16



JOB NO. 62003.207

