

CURVE DATA (1 INDICATES CURVE NUMBER)

CURVE	DELTA	RADIUS	LENGTH	TANGENT
1	06°01'36"	1208.33'	127.10'	63.61'
2	07°41'26"	1191.67'	159.95'	80.10'
3	07°41'26"	1239.00'	166.31'	83.28'
4	07°41'26"	1161.00'	155.84'	78.04'
5	07°41'26"	1200.00'	161.07'	80.66'
6	13°07'50"	300.00'	68.69'	34.49'
7	11°27'10"	300.00'	59.67'	30.08'

CONSTRUCTION NOTES

- IMPROVEMENTS**
- 1 INSTALL "A" TYPE CURB (S-50)
 - 2 INSTALL "L" TYPE CURB & GUTTER (S-47)
 - 3 INSTALL 4" A.C. PAVEMENT OVER 8" TYPE II BASE (S)
 - 4 INSTALL CROSSWALK (S-78)
 - 5 INSTALL DEPRESSED CURB (A-13)

- WATER**
- 1 INSTALL 12" DIA. WATER PIPE (U-20)
 - 2 INSTALL 8" DIA. WATER PIPE (U-20)
 - 3 INSTALL 12" DIA. GATE VALVE & BOX (U-34)
 - 4 INSTALL 16" DIA. GATE VALVE & BOX (U-34)
 - 5 INSTALL 2" TEMP. BLOW-OFF (U-32)

- STORM DRAIN** - ALL S.D. PIPE CLASS 1350-D
- 1 INSTALL 24" DIA. STORM DRAIN PIPE (U-20)
 - 2 INSTALL 30" DIA. STORM DRAIN PIPE (U-20)
 - 3 INSTALL 36" DIA. STORM DRAIN PIPE (U-20)
 - 4 INSTALL 54" DIA. STORM DRAIN PIPE (U-20)
 - 5 INSTALL 60" DIA. STORM DRAIN PIPE (U-20)
 - 6 INSTALL STORM DRAIN MANHOLE (D-4)
 - 7 INSTALL 6" TYPE "A" DROP INLET (D-12)

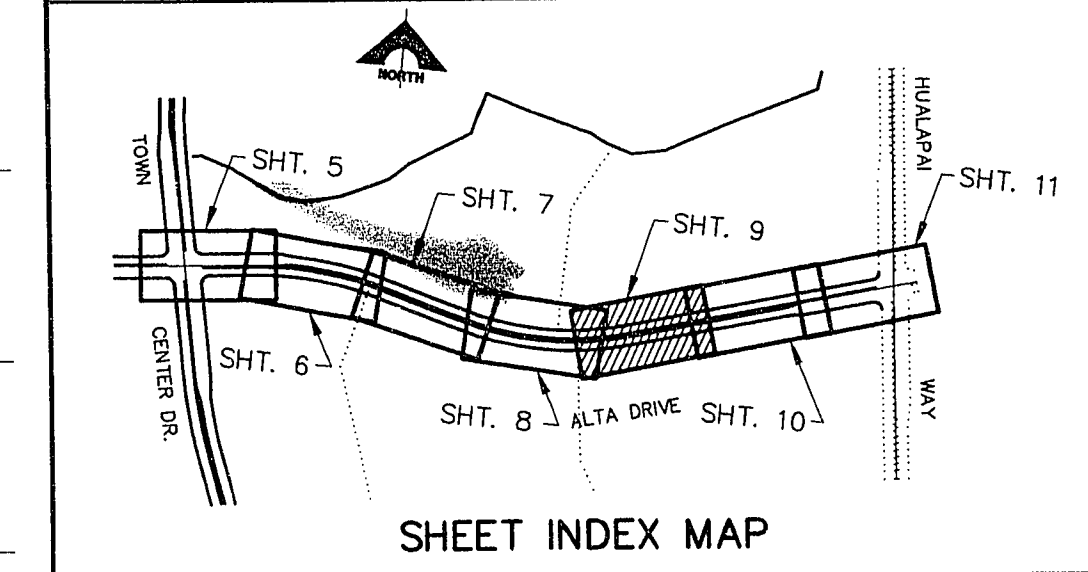
- SEWER**
- 1 INSTALL 8" DIA. SEWER PIPE (U-20)
 - 2 INSTALL 60" DIA. SEWER MANHOLE (SD-8)
 - 3 INSTALL 21" DIA. SEWER PIPE (U-20)

- STREET LIGHTING**
- 1 INSTALL STREET LIGHT, SEE ELECTRICAL PLANS (E-2)
 - 2 STREET LIGHT OR COMMON TRENCH, SEE ELECTRICAL PLANS (S)

- TRAFFIC**
- 1 INSTALL 1-3" CONDUIT (S)
 - 2 INSTALL NO. 5 PULLBOX (E-32)

- IRRIGATION**
- 1 BANK 'A': 1-6" & 2-4" SLEEVES SDR 35 PVC (U-18)
 - 2 BANK 'B': 2-4" SLEEVES SDR 35 PVC (S)
 - 3 BANK 'C': 1-6" & 3-4" SLEEVES SDR 35 PVC (S)

NOTE: ALL COMMON LOTS AS SHOWN HEREIN TO BE PRIVATELY MAINTAINED BY THE H.O.A.

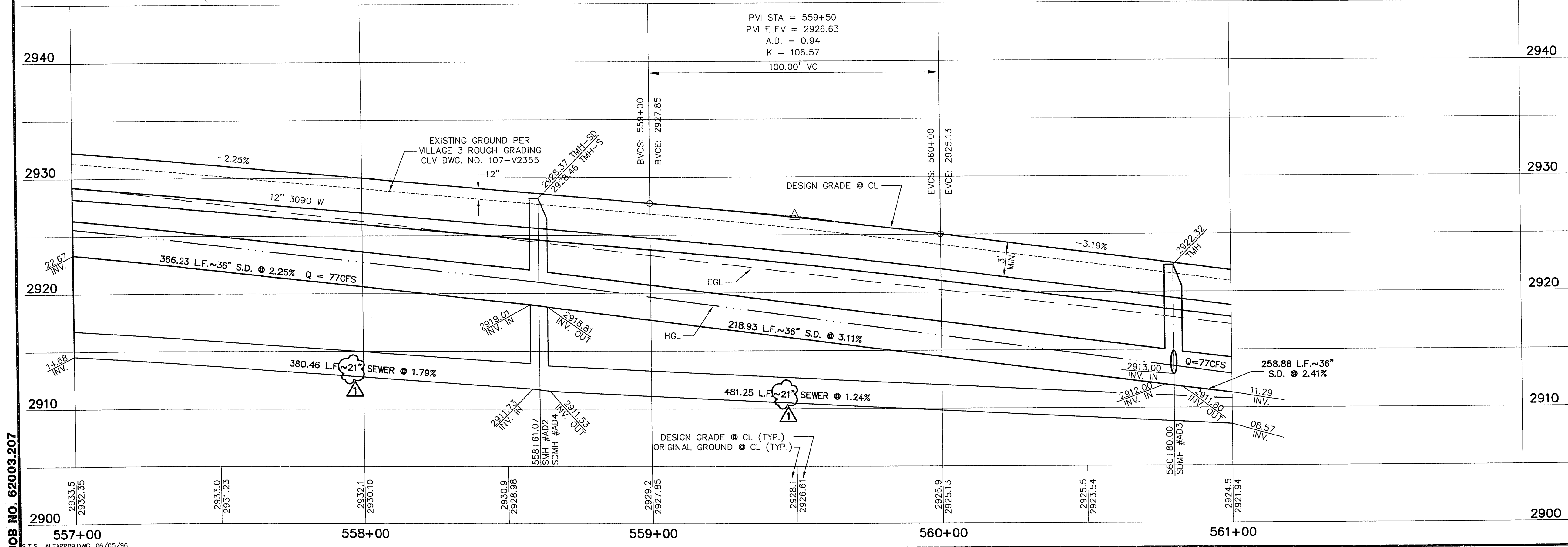


APPROVAL: *[Signature]* 2/22/96
 LAS VEGAS VALLEY WATER DISTRICT DATE 2/22/96

ALTA DRIVE

SCALE: HORIZ. 1" = 20'
 VERT. 1" = 5'

PVI STA = 559+50
 PVI ELEV = 2926.63
 A.D. = 0.94
 K = 106.57



JOB NO. 62003.207

G.C. WALLACE, INC.
 Engineering/Architecture
 1555 SOUTH RANBURY BLVD., LAS VEGAS, NEVADA 89102
 DATE: 2/22/96
 REV. DATE: 7/10/96
 APPROVAL: *[Signature]*
 REVISION: 1
 REVISION: 2
 REVISION: 3
 REVISION: 4
 REVISION: 5
 REVISION: 6
 REVISION: 7
 REVISION: 8
 REVISION: 9
 REVISION: 10
 REVISION: 11
 REVISION: 12
 REVISION: 13
 REVISION: 14
 REVISION: 15
 REVISION: 16
 REVISION: 17
 REVISION: 18
 REVISION: 19
 REVISION: 20
 REVISION: 21
 REVISION: 22
 REVISION: 23
 REVISION: 24
 REVISION: 25
 REVISION: 26
 REVISION: 27
 REVISION: 28
 REVISION: 29
 REVISION: 30
 REVISION: 31
 REVISION: 32
 REVISION: 33
 REVISION: 34
 REVISION: 35
 REVISION: 36
 REVISION: 37
 REVISION: 38
 REVISION: 39
 REVISION: 40
 REVISION: 41
 REVISION: 42
 REVISION: 43
 REVISION: 44
 REVISION: 45
 REVISION: 46
 REVISION: 47
 REVISION: 48
 REVISION: 49
 REVISION: 50
 REVISION: 51
 REVISION: 52
 REVISION: 53
 REVISION: 54
 REVISION: 55
 REVISION: 56
 REVISION: 57
 REVISION: 58
 REVISION: 59
 REVISION: 60
 REVISION: 61
 REVISION: 62
 REVISION: 63
 REVISION: 64
 REVISION: 65
 REVISION: 66
 REVISION: 67
 REVISION: 68
 REVISION: 69
 REVISION: 70
 REVISION: 71
 REVISION: 72
 REVISION: 73
 REVISION: 74
 REVISION: 75
 REVISION: 76
 REVISION: 77
 REVISION: 78
 REVISION: 79
 REVISION: 80
 REVISION: 81
 REVISION: 82
 REVISION: 83
 REVISION: 84
 REVISION: 85
 REVISION: 86
 REVISION: 87
 REVISION: 88
 REVISION: 89
 REVISION: 90
 REVISION: 91
 REVISION: 92
 REVISION: 93
 REVISION: 94
 REVISION: 95
 REVISION: 96
 REVISION: 97
 REVISION: 98
 REVISION: 99
 REVISION: 100