

**CURVE DATA** (1) INDICATES CURVE NUMBER

CURVE	DELTA	RADIUS	LENGTH	TANGENT
1	00°27'26"	1196.00'	9.54'	4.77'
2	00°27'26"	1191.67'	9.51'	4.75'
3	180°00'00"	216'	6.79'	---
4	91°2'02"	31.00'	49.34'	31.66'
5	93°08'43"	30.00'	48.78'	31.70'
6	07°08'17"	150.00'	150.00'	75.10'
7	09°55'48"	1154.00'	200.00'	100.25'
8	23°21'14"	1239.00'	501.78'	254.37'
9	14°59'40"	300.00'	78.51'	39.44'
10	17°59'41"	1708.33'	368.45'	184.69'
11	06°43'30"	300.00'	35.21'	17.63'
12	09°01'16"	300.00'	47.23'	23.67'
13	112°42'1"	300.00'	59.72'	29.96'
14	04°16'09"	1191.67'	88.79'	44.42'
15	02°16'37"	1161.00'	46.14'	23.07'

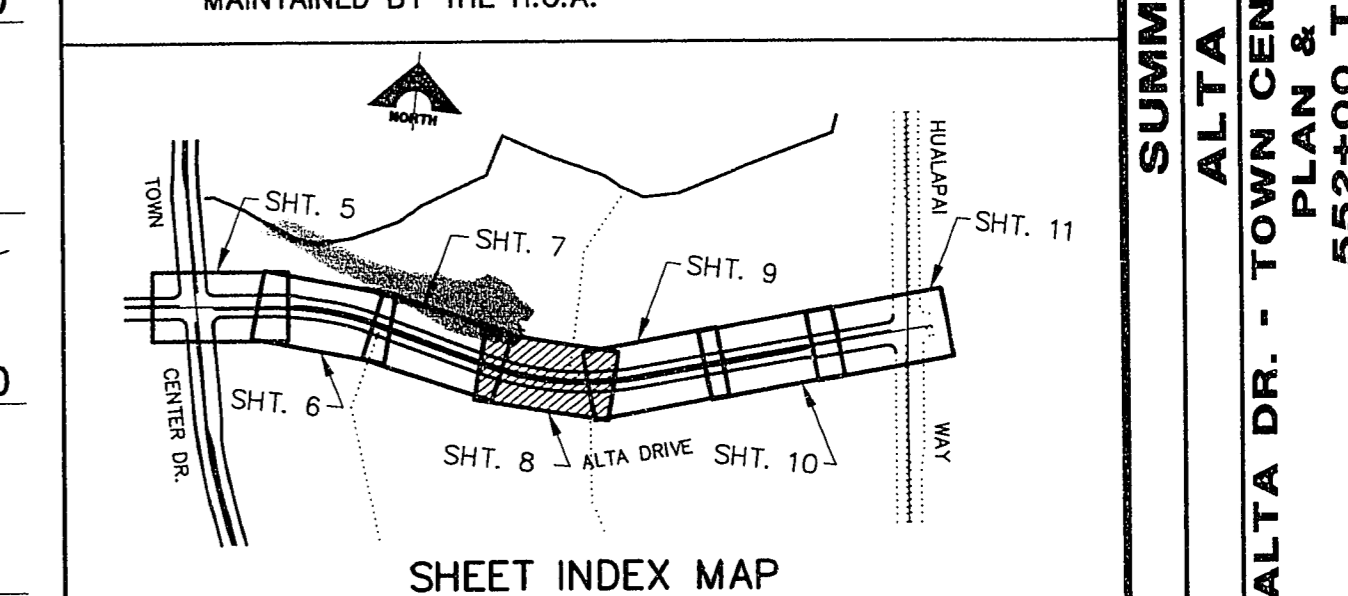
- CONSTRUCTION NOTES**
- IMPROVEMENTS**
- 1 INSTALL "A" TYPE CURB (S-50)
  - 2 INSTALL "L" TYPE CURB & GUTTER (S-47)
  - 3 INSTALL 4" A.C. PAVEMENT OVER 8" TYPE II BASE
  - 4 INSTALL CROSSWALK (S-78)
  - 5 INSTALL DEPRESSED CURB (A-13)
- WATER**
- 1 INSTALL 12" DIA. WATER PIPE (U-20)
  - 2 INSTALL 8" DIA. WATER PIPE (U-20)
  - 3 INSTALL 12" DIA. GATE VALVE & BOX (U-34)
  - 4 INSTALL 16" DIA. GATE VALVE & BOX (U-34)
  - 5 INSTALL 2" TEMP. BLOW-OFF (U-32)
  - 6 INSTALL FIRE HYDRANT ASSEMBLY (U-33)

- STORM DRAIN - ALL S.D. PIPE CLASS 1350-D**
- 1 INSTALL 24" DIA. STORM DRAIN PIPE (U-20)
  - 2 INSTALL 30" DIA. STORM DRAIN PIPE (U-20)
  - 3 INSTALL 36" DIA. STORM DRAIN PIPE (U-20)
  - 4 INSTALL 54" DIA. STORM DRAIN PIPE (U-20)
  - 5 INSTALL 60" DIA. STORM DRAIN PIPE (U-20)
  - 6 INSTALL STORM DRAIN MANHOLE (D-4)
  - 7 INSTALL 6" TYPE "A" DROP INLET (D-12)

- SEWER**
- 1 INSTALL 8" DIA. SEWER PIPE (U-20)
  - 2 INSTALL 60" DIA. SEWER MANHOLE (SD1-B/CLV)
  - 3 INSTALL 21" DIA. SEWER PIPE (U-20)

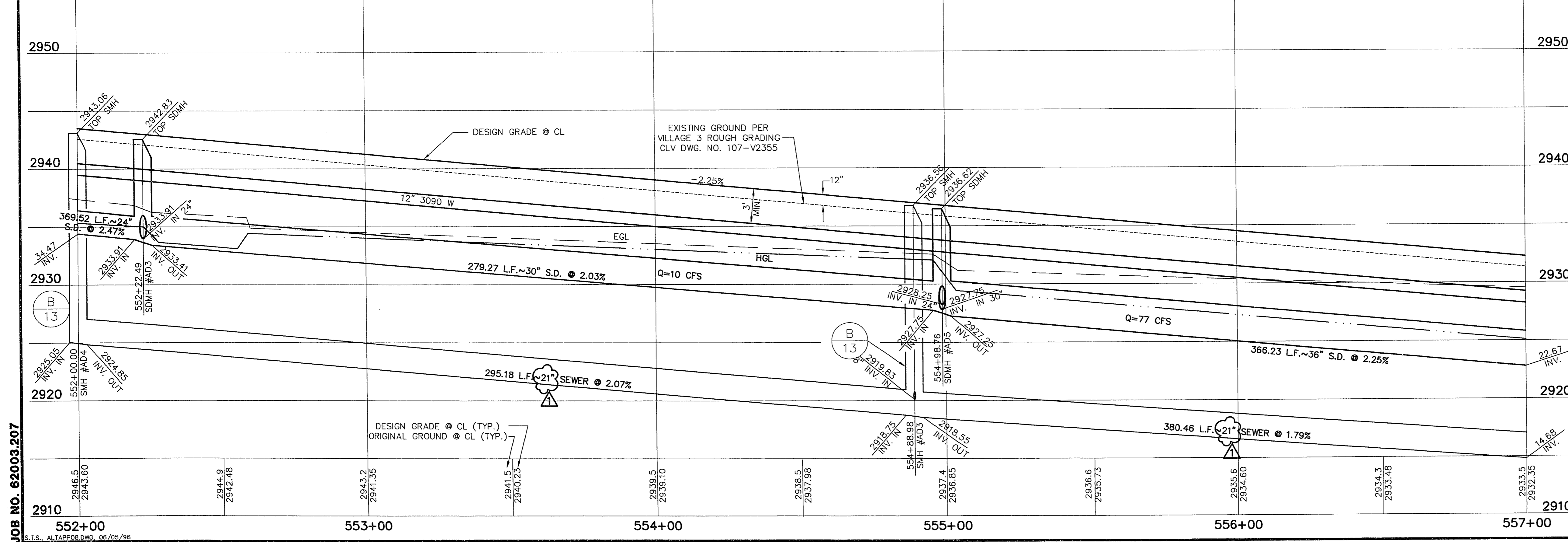
- STREET LIGHTING**
- 1 INSTALL STREET LIGHT, SEE ELECTRICAL PLANS (E-2)
  - 2 STREET LIGHT OR COMMON TRENCH, SEE ELECTRICAL PLANS
- TRAFFIC**
- 1 INSTALL 1-3" CONDUIT
  - 2 INSTALL NO. 5 PULLBOX (E-32)
- IRRIGATION**
- 1 BANK 'A': 1-6" & 2-4" SLEEVES SDR 35 PVC (U-18)
  - 2 BANK 'B': 2-4" SLEEVES SDR 35 PVC (U-18)
  - 3 BANK 'C': 1-6" & 3-4" SLEEVES SDR 35 PVC (U-18)

NOTE: ALL COMMON LOTS AS SHOWN HEREIN TO BE PRIVATELY MAINTAINED BY THE H.O.A.



APPROVAL:  
1st 111 2/22/96  
LAS VEGAS VALLEY WATER DISTRICT  
DATE: 6/06/96

SHEET 8 OF 15



JOB NO. 62003.207

APPROVAL: [Signature]

DATE: 6/06/96

SHEET 8 OF 15

**G. C. WALLACE, INC.**  
Engineering/Architecture  
1555 SOUTH RANCHO BLVD./LAS VEGAS, NEVADA 89102

**SUMMERLIN**  
**ALTA DRIVE**  
**ALTA DR. - TOWN CENTER DR. TO HUALAPAI**  
**PLAN & PROFILE**  
**552+00 TO 557+00**