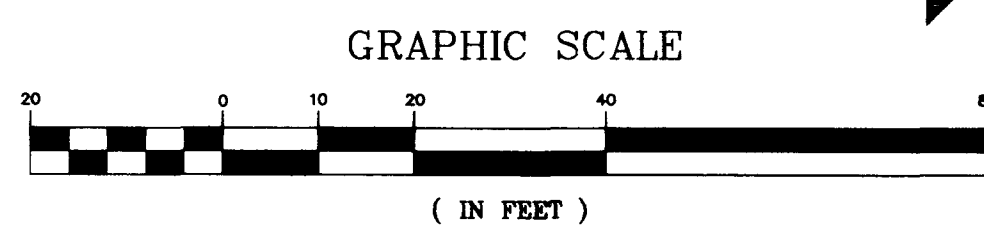
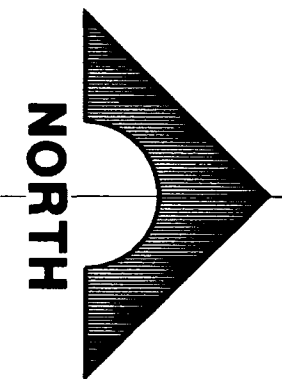


NOTE: THIS SET OF DRAWINGS IS BASED UPON NAVD 88 DATUM. PREVIOUS DRAWINGS MAY BE BASED ON SUMMERLIN DATUM. CARE SHOULD BE OBSERVED WHEN UTILIZING THIS SET OF DRAWINGS.

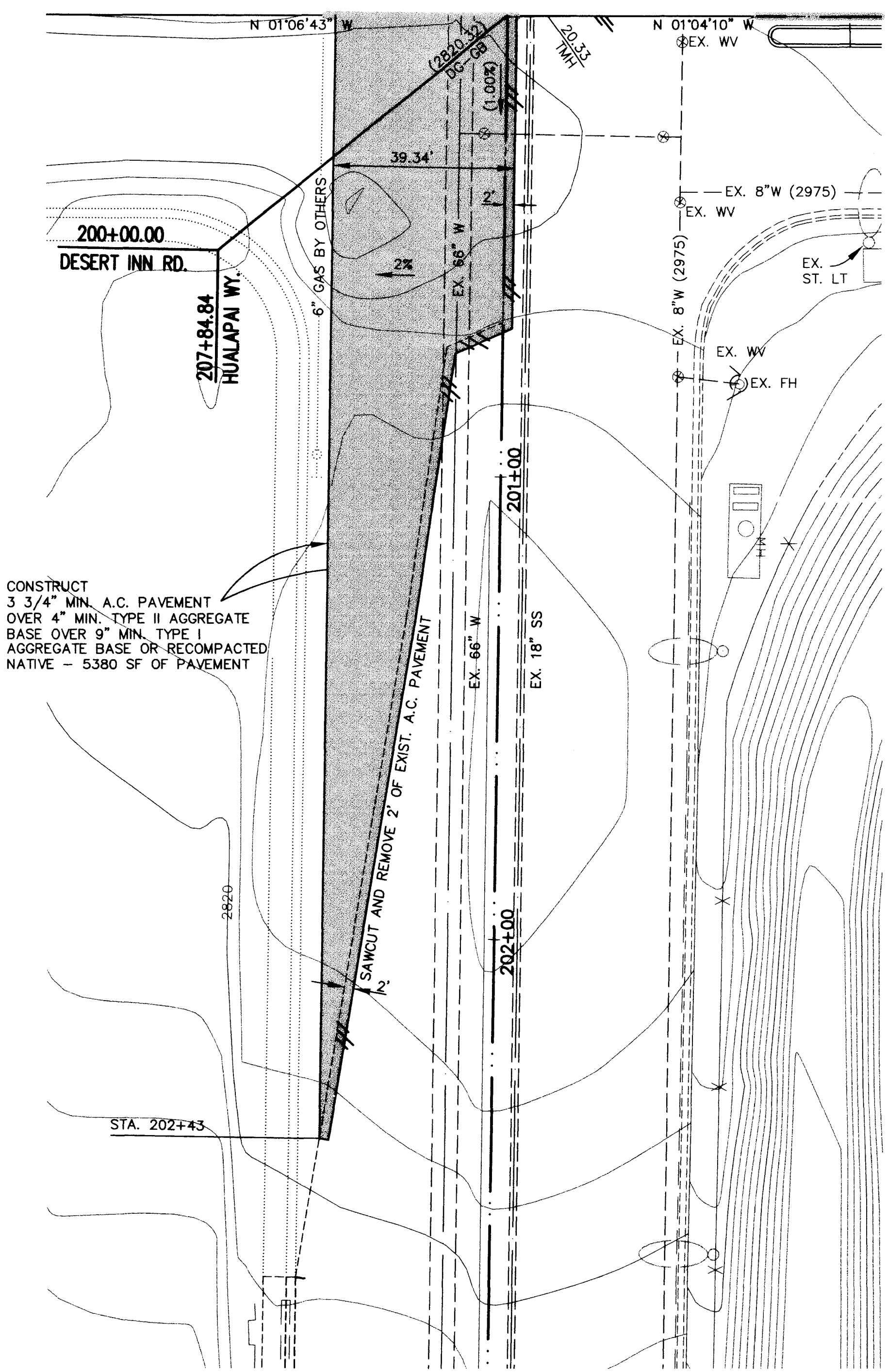
BENCHMARK		NAVD 88 DATUM	NAVD 88 DATUM	SUMMERLIN DATUM
ID #	DESC.			
1LV10 7NWS	CITY OF LAS VEGAS RIVET & PLATE IN TOP OF CURB, SOUTHEAST RETURN OF SAHARA AVENUE & HUALAPAI WAY.	2908.09 (FEET)	886.388 (METERS)	2905.89 (FEET)



BASIS OF BEARINGS  
SOUTH 89°50'59" WEST BEING THE BEARING OF THE NORTH LINE OF SECTION 12, TOWNSHIP 21 SOUTH, RANGE 59 EAST, M.D.M.  
THIS B.O.B. IS ALSO THE CENTERLINE OF SAHARA AVENUE WEST OF HUALAPAI WAY.

NOTE: SEE G.C. WALLACE REF. # 62014.206 VIL14A E, PHASE 1A HUALAPAI SEWER & STORM DRAIN OFFSETS.

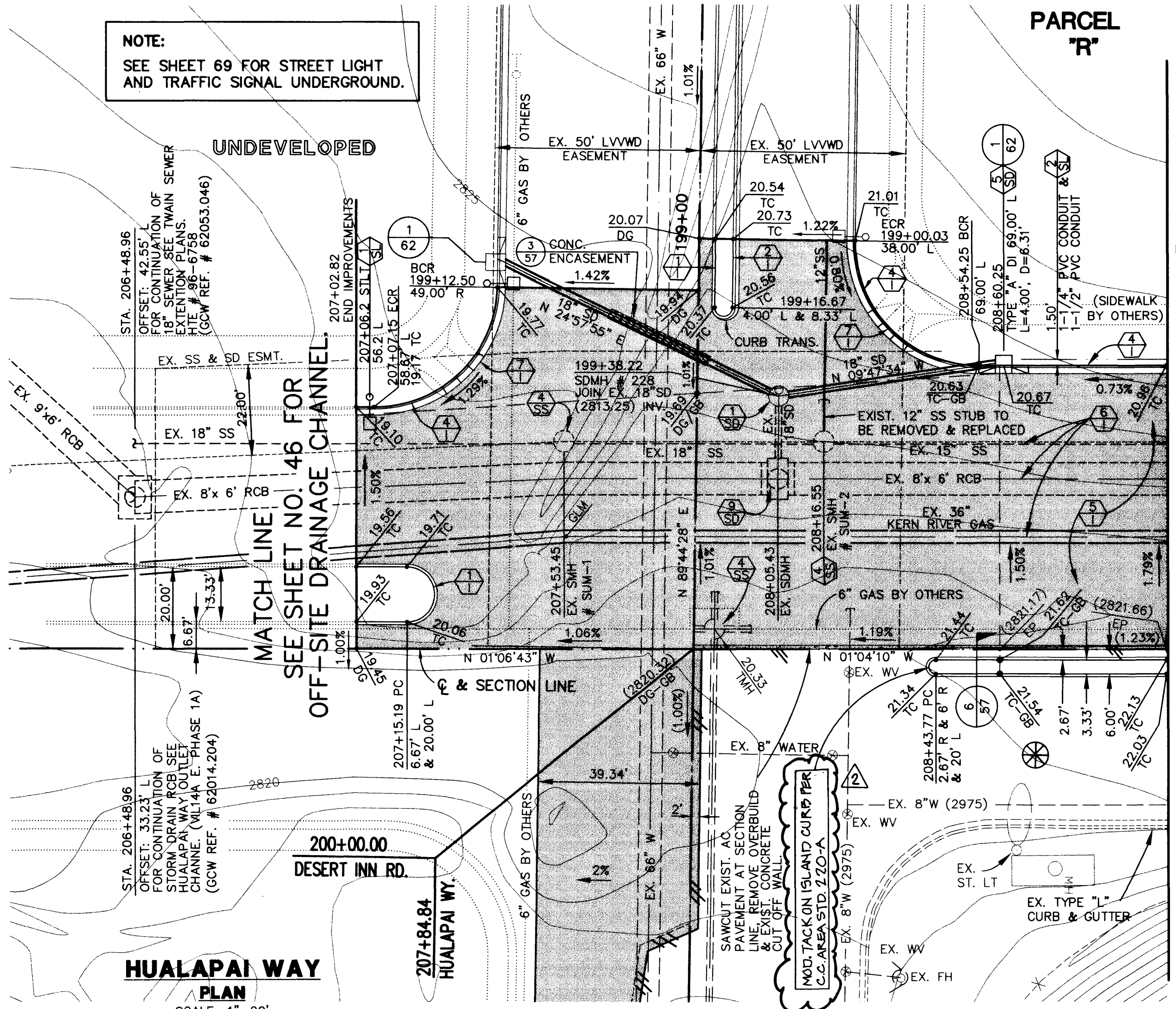
DESERT INN ROAD  
MATCH LINE SEE RIGHT HEREON



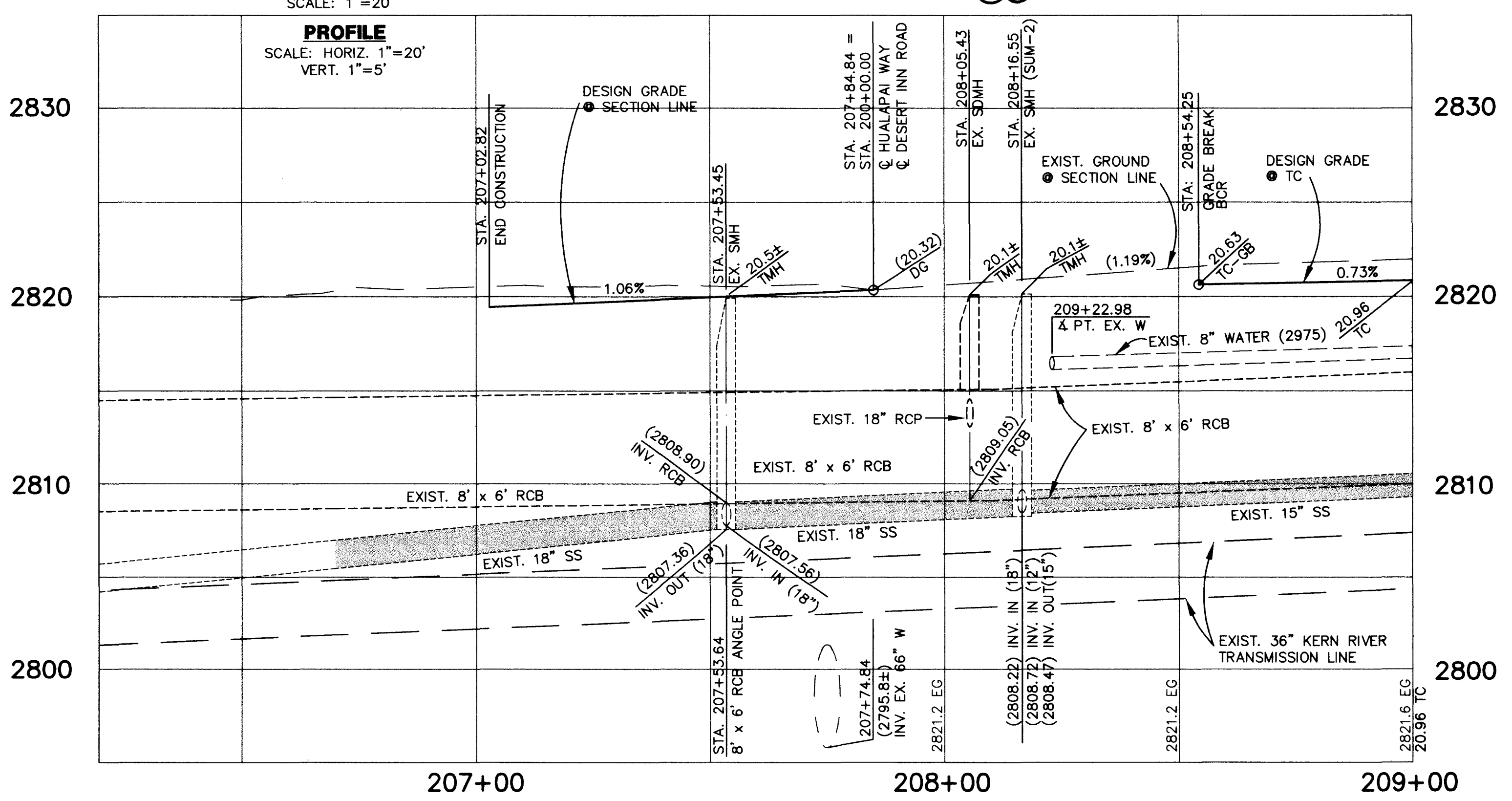
CONSTRUCT 3 3/4" MIN. A.C. PAVEMENT OVER 4" MIN. TYPE II AGGREGATE BASE OVER 9" MIN. TYPE I AGGREGATE BASE OR RECOMPACTED NATIVE - 5380 SF OF PAVEMENT

NOTE: SEE SHEET 69 FOR STREET LIGHT AND TRAFFIC SIGNAL UNDERGROUND.

DESERT INN ROAD  
MATCH LINE SEE SHEET 25



HUALAPAI WAY  
PLAN  
SCALE: 1"=20'



CONSTRUCTION NOTES

- IMPROVEMENTS**
- CONSTRUCT "A" TYPE ISLAND CURB (108 CC)
  - CONSTRUCT "L" TYPE ISLAND CURB (108 CC)
  - CONSTRUCT "L" TYPE CURB & GUTTER (8") (120 CC)
  - CONSTRUCT "L" TYPE CURB AND GUTTER (8") (56)
  - INSTALL AC PAVEMENT (SEE SECTION FOR AC THICKNESS)
  - CONTRACTOR TO VERIFY LOCATION, ELEVATION & SIZE OF EXISTING UTILITY
  - DEPRESSED CURB FOR FUTURE SIDEWALK RAMP (2 56)
  - CONSTRUCT 10' VALLEY GUTTER (122 CC)

- WATER**
- INSTALL 12" DIA. GATE VALVE & VALVE BOX
  - INSTALL 8" DIA. GATE VALVE & VALVE BOX
  - INSTALL 2" MANUAL BLOW-OFF ASSEMBLY, CAP & MARK (4 UDS)
  - INSTALL 1" COMBINATION AIR VALVE (37A UDS)
  - INSTALL STANDARD FIRE HYDRANT ASSEMBLY (7 UDS)
  - INSTALL IRRIGATION SLEEVES 1-6" AND 2-4" SDR 35 PVC - BANK "A" (1 57)
  - INSTALL IRRIGATION SLEEVES 2-4" SDR 35 PVC - BANK "B" (2 57)

- STORM DRAIN**
- INSTALL STANDARD ECCENTRIC MANHOLE (315 CC) (317 CC)
  - INSTALL "TYPE II MANHOLE" (7 56)
  - INSTALL "TYPE III MANHOLE" (9 56)
  - INSTALL STANDARD ECCENTRIC MANHOLE 48" DIA. SHAFT ONLY (4 56)
  - INSTALL TYPE "A" DROP INLET (SEE PLAN FOR LENGTH OF D.I.) (309 CC)
  - INSTALL TYPE "B" DROP INLET (310 CC)
  - INSTALL MODIFIED TYPE "C" DROP INLET (SEE PLAN FOR LENGTH OF D.I.) (5 56)
  - INSTALL END PLUG AND MARK
  - ADJUST MANHOLE TO FINISHED SURFACE
  - INSTALL TYPE "C" DROP INLET (311 CC)

- SEWER**
- INSTALL 48" STANDARD ECCENTRIC MANHOLE
  - INSTALL 60" STANDARD ECCENTRIC MANHOLE
  - INSTALL END PLUG AND MARK
  - ADJUST MANHOLE TO FINISHED SURFACE

- STREET LIGHTING**
- INSTALL STREET LIGHT, SEE ELECTRICAL PLANS
  - STREET LIGHT CONDUIT OR COMMON TRENCH

- NOTES**
- SANITARY SEWER LINES, STORM DRAIN LINES & WATER LINES SHOWN FOLLOW CENTERLINE STATIONING.

Avoid cutting underground utility lines. It's costly.

**Call before you Dig.**

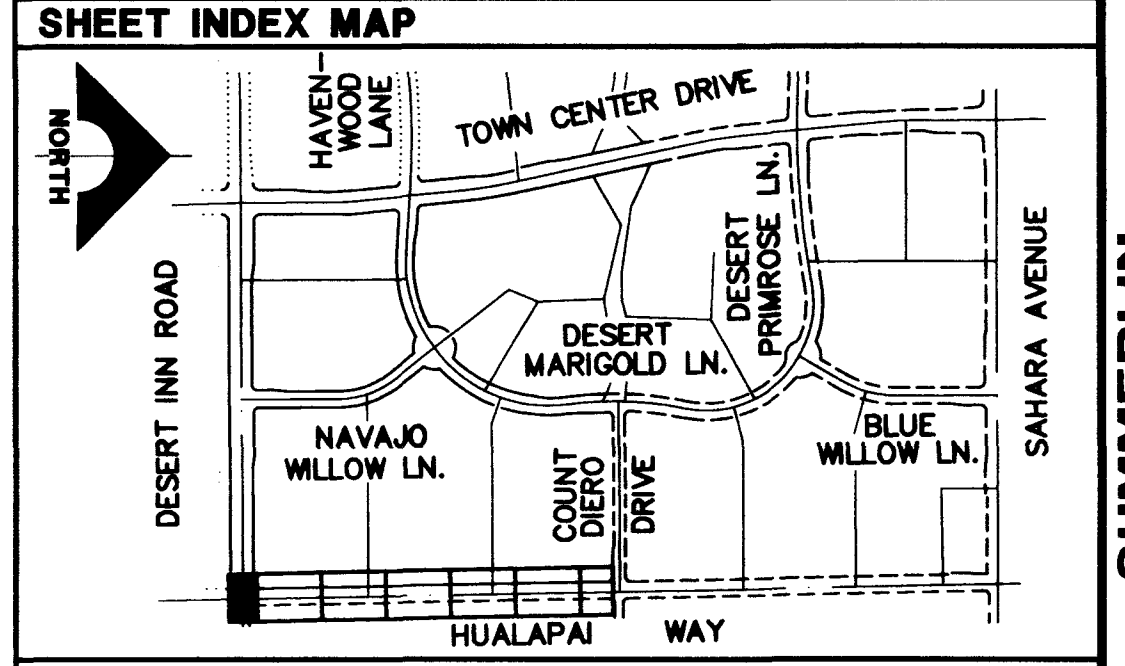
1-800-227-2600

UNDERGROUND SERVICE ALERT (USA)

Avoid hitting overhead power lines. It's costly.

**CALL BEFORE YOU DO OVERHEAD**

**CALL 1-702-593-6111**



**APPROVALS**

CLARK COUNTY DEPARTMENT OF PUBLIC WORKS

Acceptance of these plans for filing

By *Henny Bond* Date 7/28/97

ACCEPTANCE OF THESE PLANS FOR FILING SHALL NOT BE CONSTRUED TO BE A PERMIT FOR OR AN APPROVAL OF ANY VIOLATION OF ANY OF THE PROVISIONS OF THE STATE OR COUNTY LAWS AND/OR SPECIFICATIONS. CLARK COUNTY SHALL BE HELD FREE FROM DAMAGES WHICH MAY RESULT FROM THE CONSTRUCTION OF THE IMPROVEMENTS FROM THE ENGINEERING DESIGN DEPICTED HEREIN.

NOTE: POWER POLES AND/OR OTHER EXISTING FACILITIES NOT IN PROPER LOCATION BASED ON PROPOSED IMPROVEMENTS SHOWN HEREON WILL BE RELOCATED AT NO EXPENSE TO CLARK COUNTY.

1276 JFB 6/26/97  
LAS VEGAS VALLEY WATER DISTRICT DATE

RECOMMENDED  
 EUGENE W. WRIGHT  
 11276 R.P.E. NO. 11276  
 DATE REV. DATE  
 8-11-91 REV. MEDIAN ISL. CURB DESCRIPTION  
 11-27-91 REV. DATE  
 APPROVAL  
 DATE

G.C. WALLACE, INC.  
 Engineering/Architecture  
 1880 SOUTH HANBROW BLVD., LAS VEGAS, NEVADA 89102

SUMMERLIN  
 VILLAGE 14A EAST PHASE 1B  
 HUALAPAI WAY  
 PLAN AND PROFILE  
 STA. 207+02.82 TO 209+00.00  
 VILLAGE 14A EAST PHASE 1B HUALAPAI WAY - DESERT INN ROAD TO WILLOW CENTER LANE

SHEET  
**26**  
 SHT 26 OF 71

