

MATCH LINE 213+50.00 SEE SHEET 27

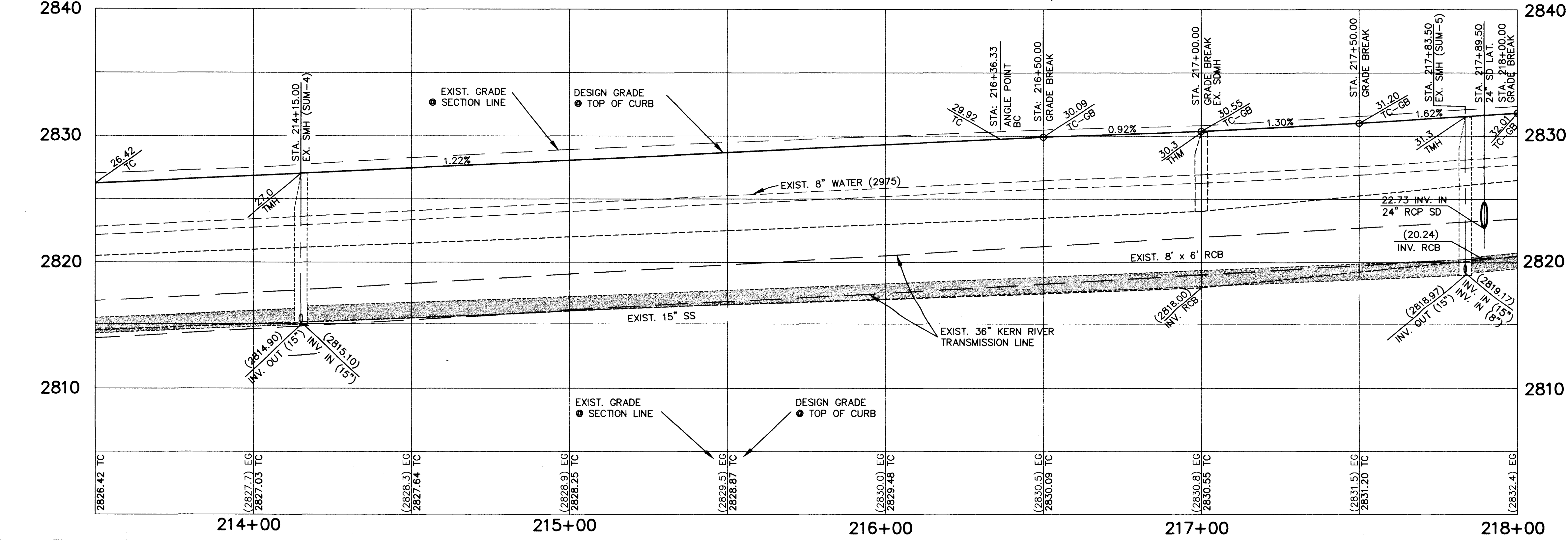
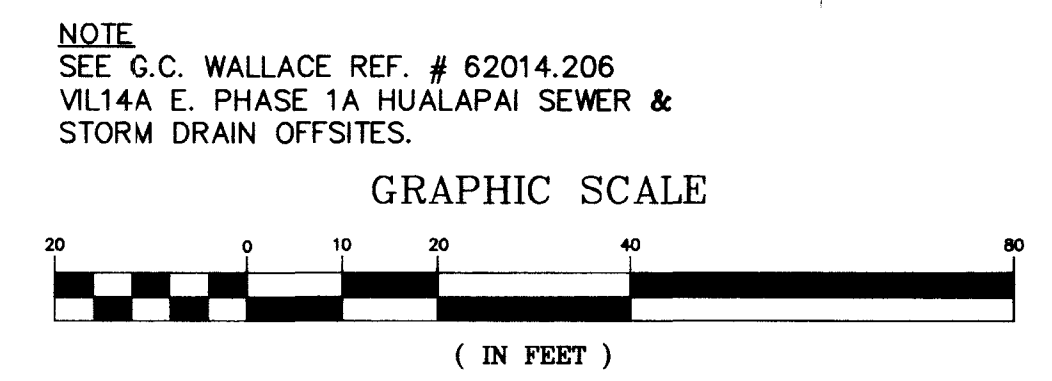
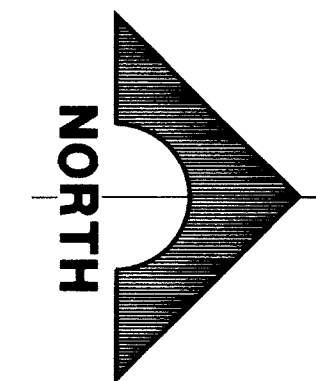
MATCH LINE 218+00.00 SEE SHEET 29

BASIS OF BEARINGS
SOUTH 89°50'59" WEST BEING THE BEARING OF THE NORTH LINE OF SECTION 12, TOWNSHIP 21 SOUTH, RANGE 59 EAST, M.D.M. THIS B.O.B. IS ALSO THE CENTERLINE OF SAHARA AVENUE WEST OF HUALAPAI WAY.

NOTE
THIS SET OF DRAWINGS IS BASED UPON NAVD 88 DATUM. PREVIOUS DRAWINGS MAY BE BASED ON SUMMERLIN DATUM. CARE SHOULD BE OBSERVED WHEN UTILIZING THIS SET OF DRAWINGS.

BENCHMARK		NAVD 88 DATUM	NAVD 88 DATUM	SUMMERLIN DATUM
ID #	DESC.	(FEET)	(METERS)	(FEET)
1LV10 7NWS	CITY OF LAS VEGAS RIVET & PLATE IN TOP OF CURB, SOUTHEAST CORNER OF SAHARA AVENUE & HUALAPAI WAY.	2908.09	886.388	2905.89

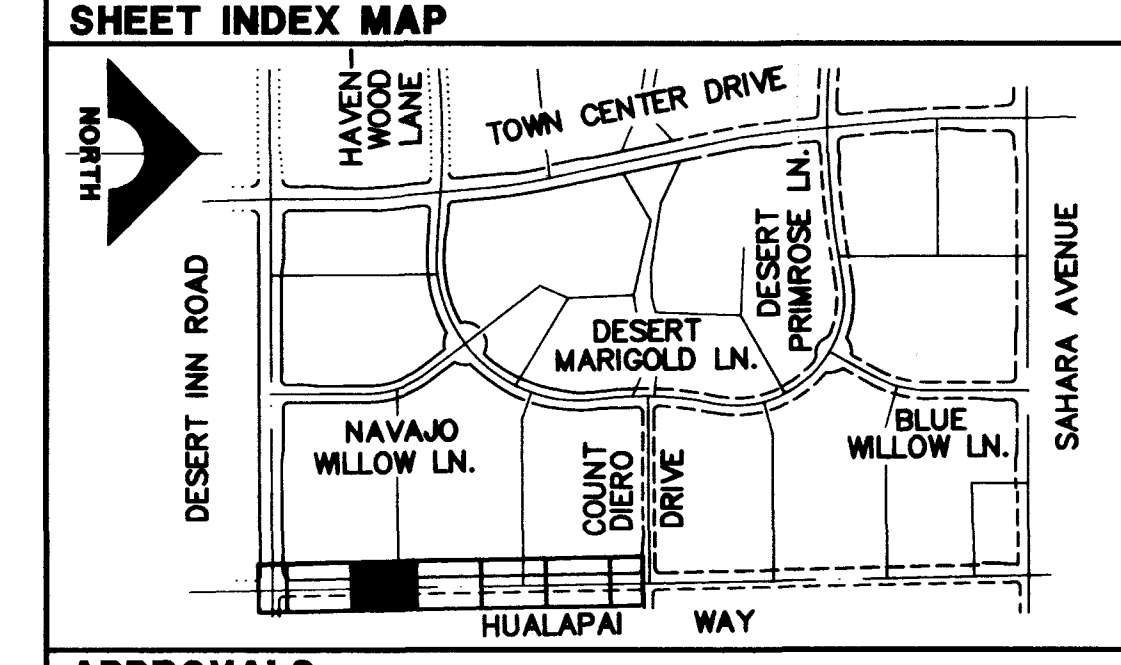
HUALAPAI WAY
PLAN
SCALE: 1"=20'
PROFILE
SCALE: HORIZ. 1"=20'
VERT. 1"=5'



- CONSTRUCTION NOTES**
- IMPROVEMENTS**
- CONSTRUCT "A" TYPE ISLAND CURB (108 CC)
 - CONSTRUCT "L" TYPE ISLAND CURB (108 CC)
 - CONSTRUCT "L" TYPE CURB & GUTTER (6") (120 CC)
 - CONSTRUCT "L" TYPE CURB AND GUTTER (8") (156 CC)
 - INSTALL AC PAVEMENT (SEE SECTION FOR AC THICKNESS)
 - CONTRACTOR TO VERIFY LOCATION, ELEVATION & SIZE OF EXISTING UTILITY
 - DEPRESSED CURB FOR FUTURE SIDEWALK RAMP (256 CC)
 - CONSTRUCT 10" VALLEY GUTTER (122 CC)
- WATER**
- INSTALL 12" DIA. GATE VALVE & VALVE BOX
 - INSTALL 8" DIA. GATE VALVE & VALVE BOX
 - INSTALL 2" MANUAL BLOW-OFF ASSEMBLY, CAP & MARK (4 UDS)
 - INSTALL 1" COMBINATION AIR VALVE (37A UDS)
 - INSTALL STANDARD FIRE HYDRANT ASSEMBLY (7 UDS)
 - INSTALL IRRIGATION SLEEVES 1-6" AND 2-4" (157 UDS)
 - INSTALL IRRIGATION SLEEVES 2-4" SDR 35 PVC - BANK "B" (2 UDS)
- STORM DRAIN**
- INSTALL STANDARD ECCENTRIC MANHOLE (315 CC)
 - INSTALL "TYPE II MANHOLE" (756 CC)
 - INSTALL "TYPE III MANHOLE" (856 CC)
 - INSTALL STANDARD ECCENTRIC MANHOLE 48" DIA. SHAFT ONLY (456 CC)
 - INSTALL TYPE "A" DROP INLET (SEE PLAN FOR LENGTH OF D.I.) (309 CC)
 - INSTALL TYPE "B" DROP INLET (310 CC)
 - INSTALL MODIFIED TYPE "C" DROP INLET (SEE PLAN FOR LENGTH OF D.I.) (556 CC)
 - INSTALL END PLUG AND MARK
 - ADJUST MANHOLE TO FINISHED SURFACE
 - INSTALL TYPE "C" DROP INLET (311 CC)
- SEWER**
- INSTALL 48" STANDARD ECCENTRIC MANHOLE
 - INSTALL 60" STANDARD ECCENTRIC MANHOLE
 - INSTALL END PLUG AND MARK
 - ADJUST MANHOLE TO FINISHED SURFACE
- STREET LIGHTING**
- INSTALL STREET LIGHT, SEE ELECTRICAL PLANS
 - STREET LIGHT CONDUIT OR COMMON TRENCH
- NOTES**
- SANITARY SEWER LINES, STORM DRAIN LINES & WATER LINES SHOWN FOLLOW CENTERLINE STATIONING.

Call before you Dig.
1-800-227-2600
UNDERGROUND SERVICE ALERT (USA)

CALL BEFORE YOU DO OVERHEAD
CALL 1-702-593-6111



APPROVALS
CLARK COUNTY DEPARTMENT OF PUBLIC WORKS
Acceptance of these plans for filing
By *Harry Borch* Date *7/20/97*

ACCEPTANCE OF THESE PLANS FOR FILING SHALL NOT BE CONSTRUED TO BE A PERMIT FOR OR AN APPROVAL OF ANY VIOLATION OF ANY OF THE PROVISIONS OF THE STATE OR COUNTY LAWS AND/OR SPECIFICATIONS. CLARK COUNTY SHALL BE HELD FREE FROM DAMAGES WHICH MAY RESULT FROM THE CONSTRUCTION OF THE IMPROVEMENTS FROM THE ENGINEERING DESIGN DEPICTED HEREIN.

NOTE: POWER POLES AND/OR OTHER EXISTING FACILITIES NOT IN PROPER LOCATION BASED ON PROPOSED IMPROVEMENTS SHOWN HEREON WILL BE RELOCATED AT NO EXPENSE TO CLARK COUNTY.

[Signature] 4/20/97
LAS VEGAS VALLEY WATER DISTRICT DATE

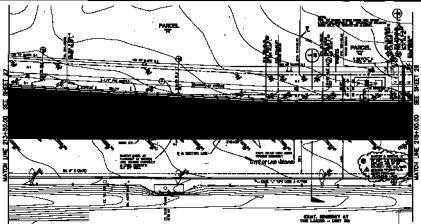
RECOMMENDED ENGINEER WRIGHT
11/27/96 REF. NO. DATE
REV. 1/97 REV. 2/97 REV. 3/97 REV. 4/97 REV. 5/97 REV. 6/97 REV. 7/97 REV. 8/97 REV. 9/97 REV. 10/97 REV. 11/97 REV. 12/97

STATE OF NEVADA
REGISTERED PROFESSIONAL ENGINEER
EUGENE W. WRIGHT
CIVIL ENGINEER
NO. 12716
EXPIRES 12/31/97

G.C. WALLACE, INC.
Engineering/Architecture
1565 SOUTH RAINBOW BLVD., LAS VEGAS, NEVADA 89102

VILLAGE 14A EAST PHASE 1B
HUALAPAI WAY
PLAN AND PROFILE
STA. 213+50.00 TO STA. 218+00.00
VILLAGE 14A EAST PHASE 1B HUALAPAI WAY - DESERT INN ROAD TO WILLOW CENTER LANE

SHEET **28**
SHT 28 OF 71



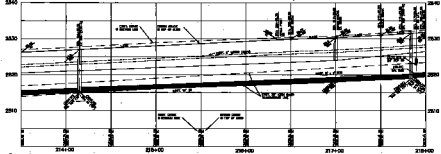
SEE PLAN SHEET 27

SEE PLAN SHEET 28

HIMALAYA WAY
SUNNYVALE ROAD



GRAPHIC SCALE
1" = 40'



COMPUTATION NOTES

ASSUMPTIONS

- 1. ALL DISTANCES ARE IN FEET
- 2. ALL ANGLES ARE IN DEGREES
- 3. ALL CURVES ARE CIRCULAR
- 4. ALL CURVES ARE IN THE HORIZONTAL PLANE
- 5. ALL CURVES ARE IN THE VERTICAL PLANE
- 6. ALL CURVES ARE IN THE PLANE OF THE ROAD
- 7. ALL CURVES ARE IN THE PLANE OF THE GROUND
- 8. ALL CURVES ARE IN THE PLANE OF THE SURFACE
- 9. ALL CURVES ARE IN THE PLANE OF THE CENTERLINE
- 10. ALL CURVES ARE IN THE PLANE OF THE AXIS

NOTES

- 1. ALL DISTANCES ARE IN FEET
- 2. ALL ANGLES ARE IN DEGREES
- 3. ALL CURVES ARE CIRCULAR
- 4. ALL CURVES ARE IN THE HORIZONTAL PLANE
- 5. ALL CURVES ARE IN THE VERTICAL PLANE
- 6. ALL CURVES ARE IN THE PLANE OF THE ROAD
- 7. ALL CURVES ARE IN THE PLANE OF THE GROUND
- 8. ALL CURVES ARE IN THE PLANE OF THE SURFACE
- 9. ALL CURVES ARE IN THE PLANE OF THE CENTERLINE
- 10. ALL CURVES ARE IN THE PLANE OF THE AXIS

PROPERTY LINES

- 1. ALL DISTANCES ARE IN FEET
- 2. ALL ANGLES ARE IN DEGREES
- 3. ALL CURVES ARE CIRCULAR
- 4. ALL CURVES ARE IN THE HORIZONTAL PLANE
- 5. ALL CURVES ARE IN THE VERTICAL PLANE
- 6. ALL CURVES ARE IN THE PLANE OF THE ROAD
- 7. ALL CURVES ARE IN THE PLANE OF THE GROUND
- 8. ALL CURVES ARE IN THE PLANE OF THE SURFACE
- 9. ALL CURVES ARE IN THE PLANE OF THE CENTERLINE
- 10. ALL CURVES ARE IN THE PLANE OF THE AXIS

ADDITIONAL NOTES

ALL DISTANCES ARE IN FEET
ALL ANGLES ARE IN DEGREES
ALL CURVES ARE CIRCULAR
ALL CURVES ARE IN THE HORIZONTAL PLANE
ALL CURVES ARE IN THE VERTICAL PLANE
ALL CURVES ARE IN THE PLANE OF THE ROAD
ALL CURVES ARE IN THE PLANE OF THE GROUND
ALL CURVES ARE IN THE PLANE OF THE SURFACE
ALL CURVES ARE IN THE PLANE OF THE CENTERLINE
ALL CURVES ARE IN THE PLANE OF THE AXIS

DATE 10/15/1954

BY [Signature]

CHECKED [Signature]

SCALE 1" = 40'

PROJECT [Project Name]

LOCATION [Location]

DATE 10/15/1954

BY [Signature]

CHECKED [Signature]

SCALE 1" = 40'

PROJECT [Project Name]

LOCATION [Location]

