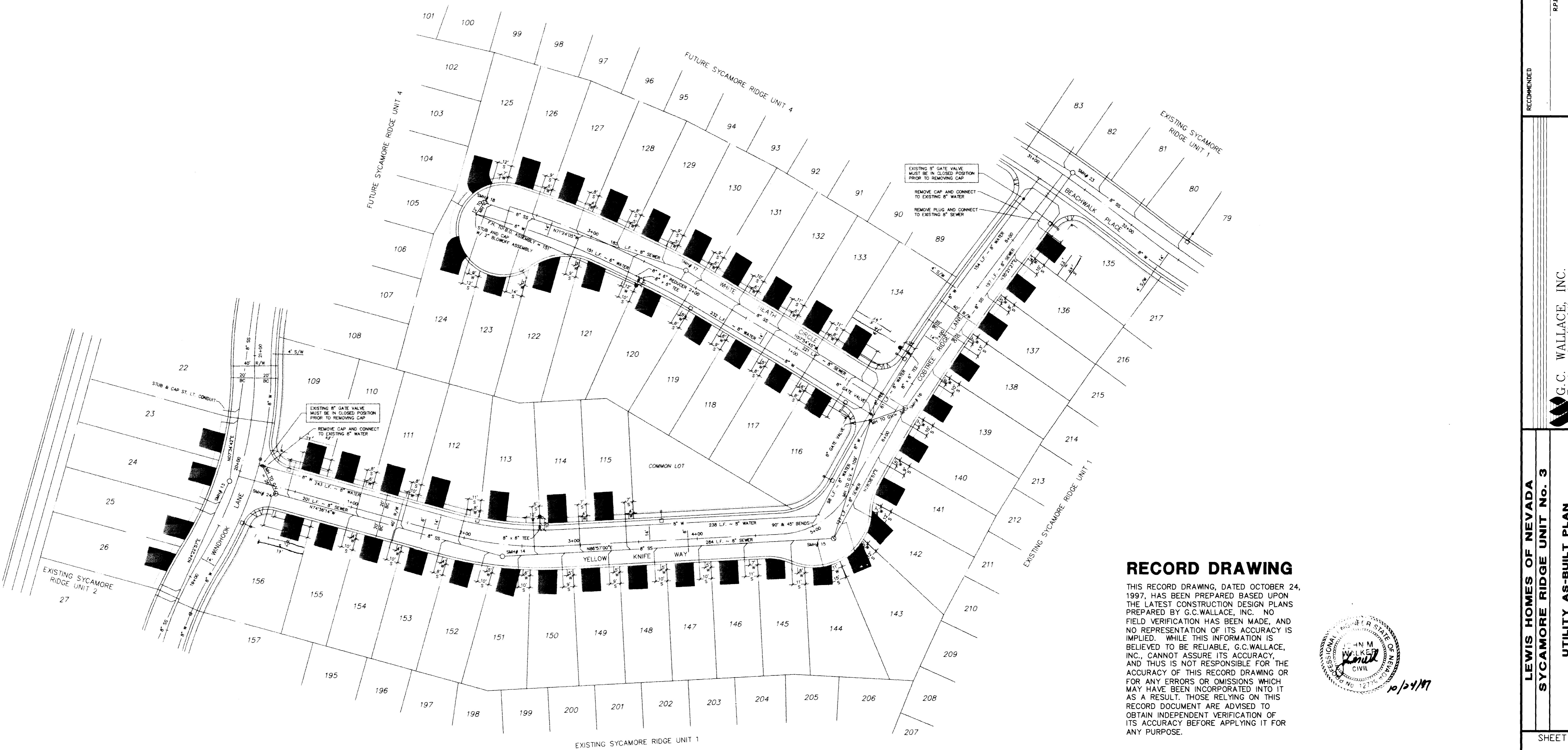
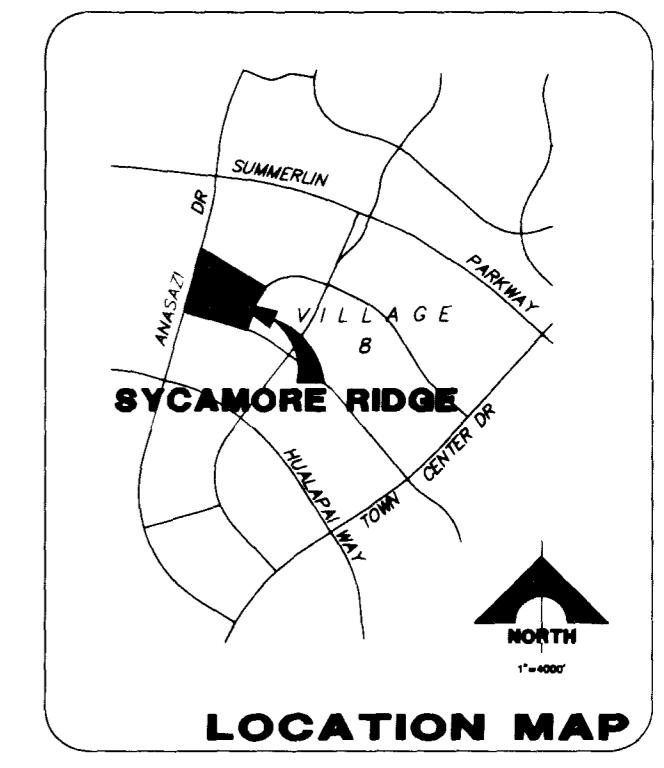
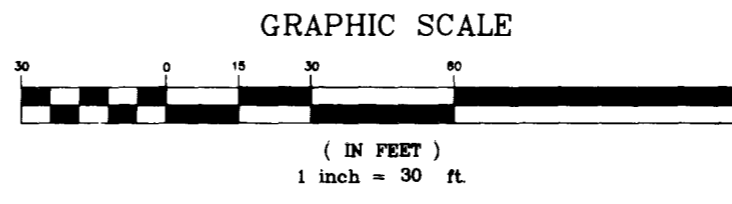


SCALE 1"=40'



RECORD DRAWING

THIS RECORD DRAWING, DATED OCTOBER 24, 1997, HAS BEEN PREPARED BASED UPON THE LATEST CONSTRUCTION DESIGN PLANS PREPARED BY G.C.WALLACE, INC. NO FIELD VERIFICATION HAS BEEN MADE, AND NO REPRESENTATION OF ITS ACCURACY IS IMPLIED. WHILE THIS INFORMATION IS BELIEVED TO BE RELIABLE, G.C.WALLACE, INC., CANNOT ASSURE ITS ACCURACY, AND THIS IS NOT RESPONSIBLE FOR THE ACCURACY OF THIS RECORD DRAWING OR FOR ANY ERRORS OR OMISSIONS WHICH MAY HAVE BEEN INCORPORATED INTO IT AS A RESULT. THOSE RELYING ON THIS RECORD DOCUMENT ARE ADVISED TO OBTAIN INDEPENDENT VERIFICATION OF ITS ACCURACY BEFORE APPLYING IT FOR ANY PURPOSE.



10/24/97

LEWIS HOMES OF NEVADA
 SYCAMORE RIDGE UNIT No. 3
 UTILITY AS-BUILT PLAN

SHEET

1

SHT 1 OF 1

G.C. WALLACE, INC.
 Engineering/Architecture
 1555 SOUTH RAINBOW BLVD./LAS VEGAS, NEVADA 89106

RECOMMENDED
 R.P.E. NO. DATE

APPROVAL
 DESCRIPTION
 REV. DATE

JOB NO. 5543.9083

"As Built" 307Y-4420-3

