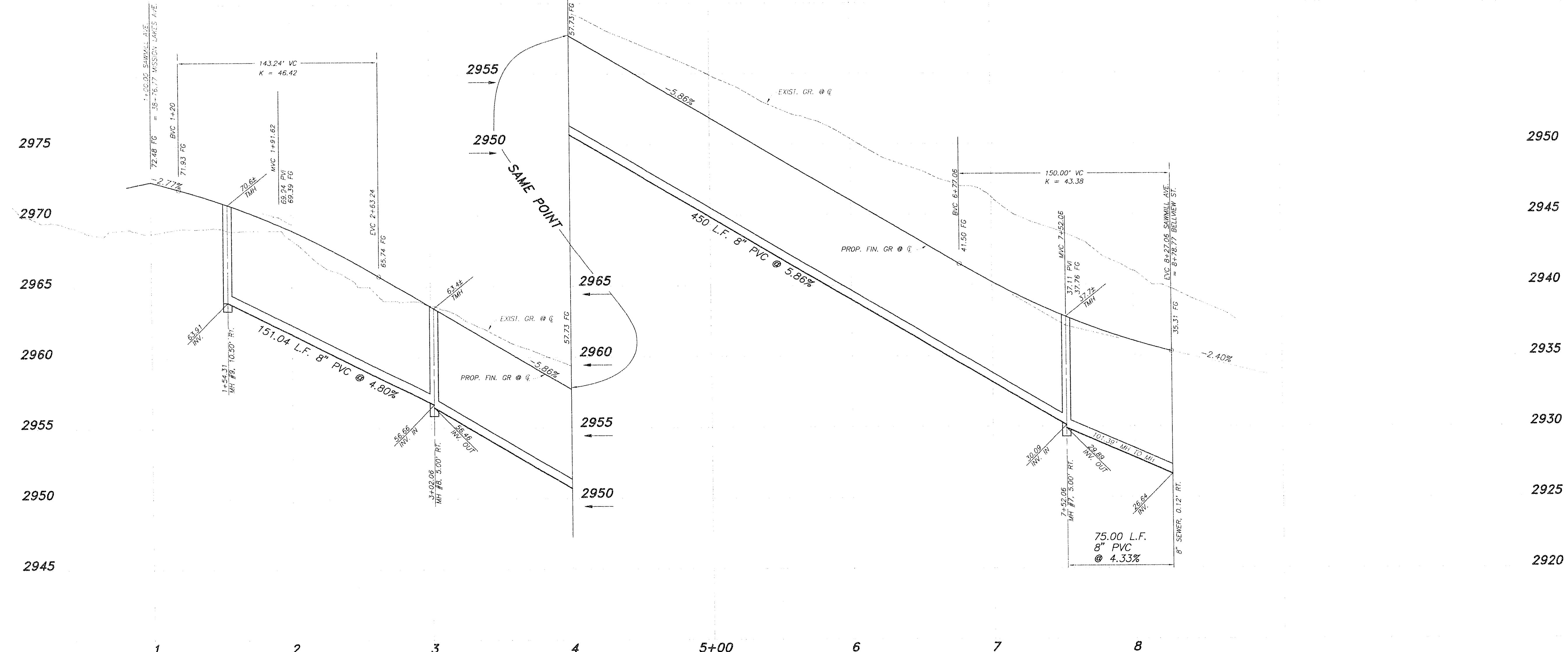
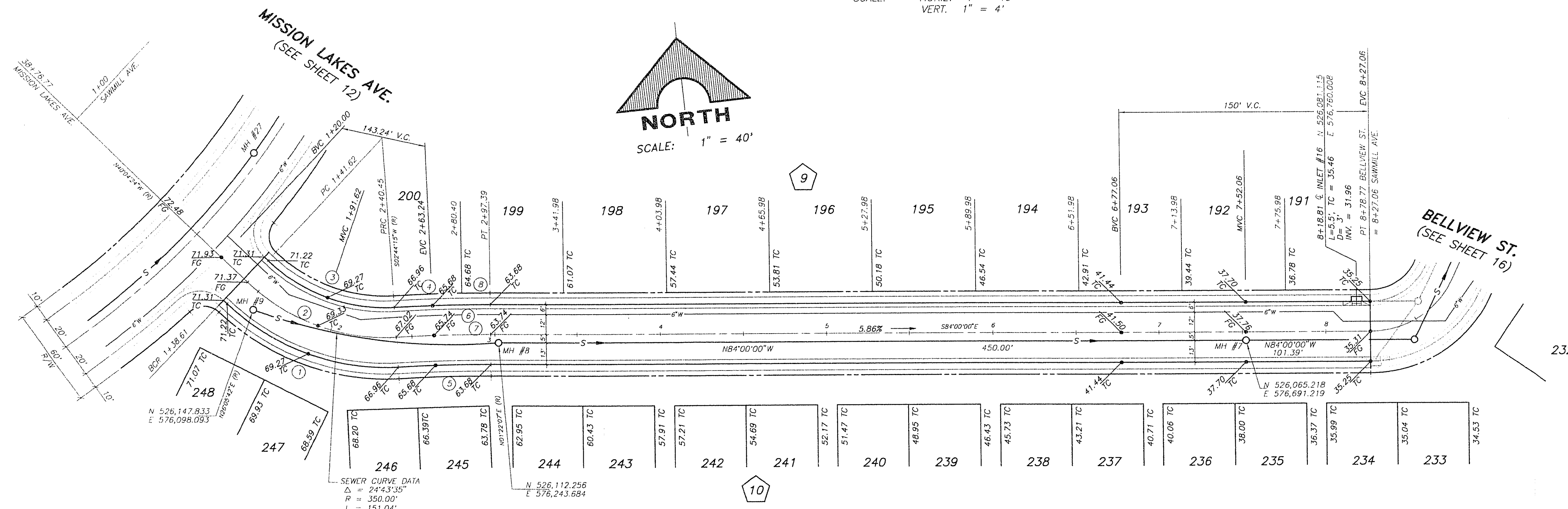


JOB NO. 701.240 PLOTTED: 01/11/95 4:08 pm DRAWING: CIVIL/TRANS/DAT-17 BY: GWP

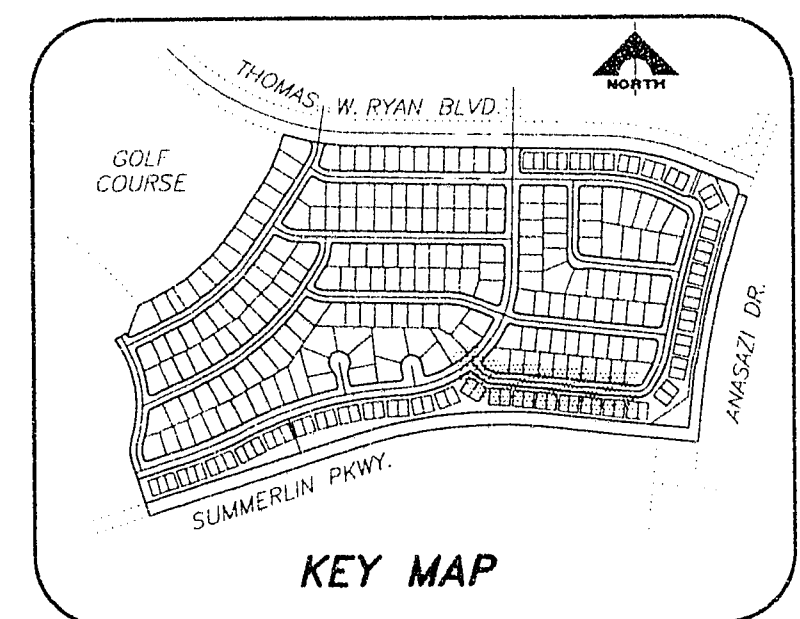
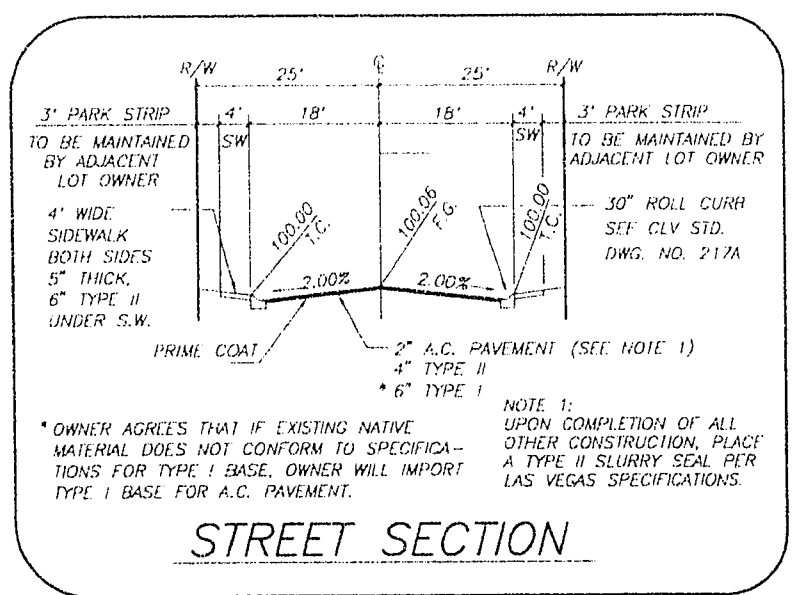


**PROFILE**  
SCALE: HORIZ. 1" = 40'  
VERT. 1" = 4'



**④ CENTERLINE & BCR CURVE TABLE**

CURVE	DELTA	RADIUS	LENGTH	TANGENT
1	2°11'21"	138.00'	113.65'	60.28'
2	2°11'21"	120.00'	98.83'	52.41'
3	4°22'42"	102.00'	84.01'	44.55'
4	02°17'21"	1018.00'	40.67'	20.34'
5	03°15'45"	982.00'	55.92'	27.97'
6	03°15'45"	1018.00'	57.97'	28.99'
7	03°15'45"	1020.00'	56.84'	28.48'
8	00°58'24"	1018.00'	17.29'	8.65'



RECORDED  
ENGINEER - STATE OF NEVADA  
SONNY WALLACE  
No. 10118  
4-26-95

G. C. WALLACE, INC.  
Engineering/Architecture  
1550 SOUTH RANBOW BLVD., LAS VEGAS, NEVADA 89102

DEL WEBB COMMUNITIES, INC.  
SUN CITY SUMMERLIN - UNIT NO. 47  
SAWMILL AVENUE

SHEET  
17  
OF 34 SHEETS

107Y-41/41-47