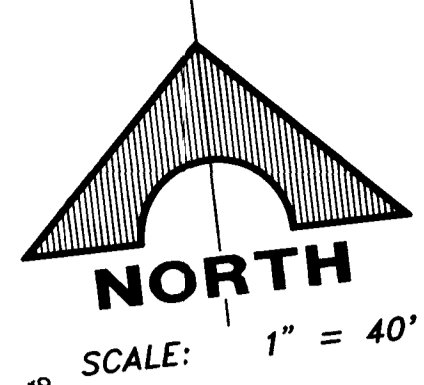


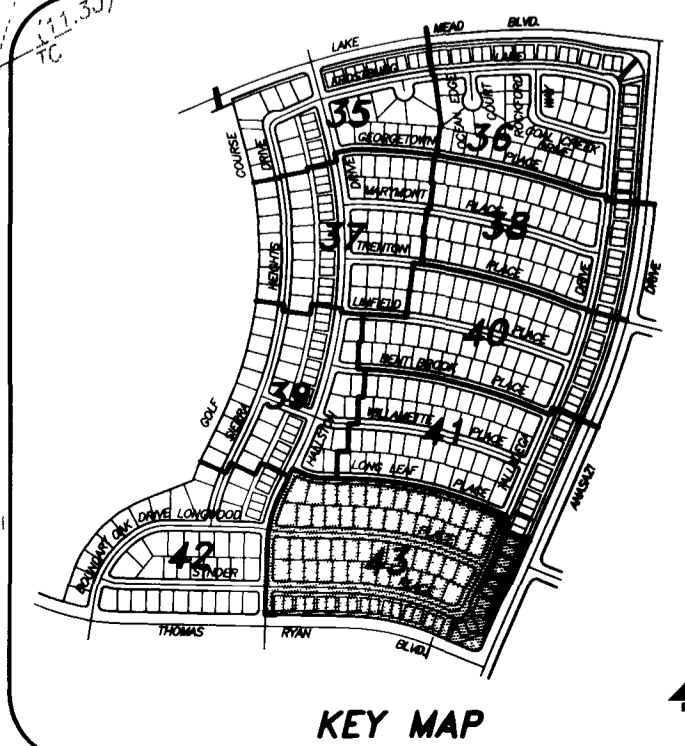
MATCH LINE - SEE GRADING PLAN VII SHEET 41



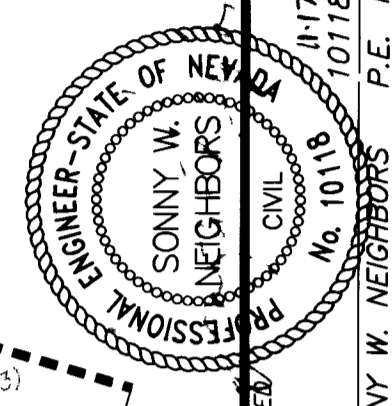
MATCH LINE - SEE GRADING PLAN VIII SHEET 42

- WALL NOTES:**
1. APPROVAL OF THESE PLANS BY THE CITY ENGINEER DOES NOT PERTAIN TO CONSTRUCTION OF NEW WALLS (RETAINING OR NON-RETAINING) OR MODIFICATIONS TO EXISTING WALLS.
  2. ALL WALLS, NEW OR EXISTING, ARE REVIEWED BY THE CITY ENGINEER FOR GRADING RELATIONSHIPS ONLY.
  3. ALL WALLS, RETAINING AND NON-RETAINING, MUST BE APPROVED AND A PERMIT OBTAINED FROM THE DEPARTMENT OF BUILDING AND SAFETY.

**THOMAS W. RYAN BLVD.**  
(SEE IMPROVEMENT PLANS PER G.C. WALLACE, INC.)



I CERTIFY THAT THIS GRADING PLAN IS IN CONFORMANCE WITH THE APPROVED DRAINAGE STUDY ON FILE AT THE CITY OF LAS VEGAS FOR THIS PROJECT.



REV.	DATE	DESCRIPTION	C.L.V.	DATE

**G.C. WALLACE, INC.**  
Engineering/Architecture  
1555 SOUTH RAINBOW BLVD., LAS VEGAS, NEVADA 89102

**DEL WEBB COMMUNITIES, INC. NO. 46**  
**SUN CITY LAS VEGAS UNIT NO. 46**  
**GRADING PLAN IX**

SHEET **43**  
OF 48 SHEETS

10-1-13 107Y-4141-46