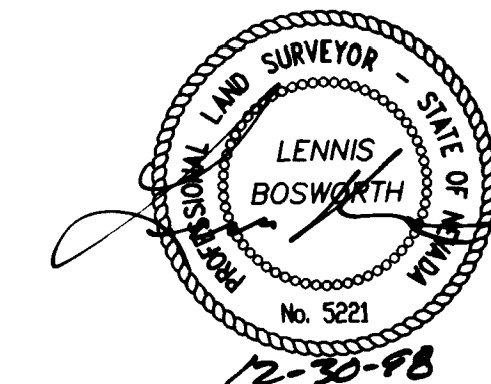


# FINAL MAP OF SUN CITY LAS VEGAS VILLAGE 10 – UNIT NO. 46

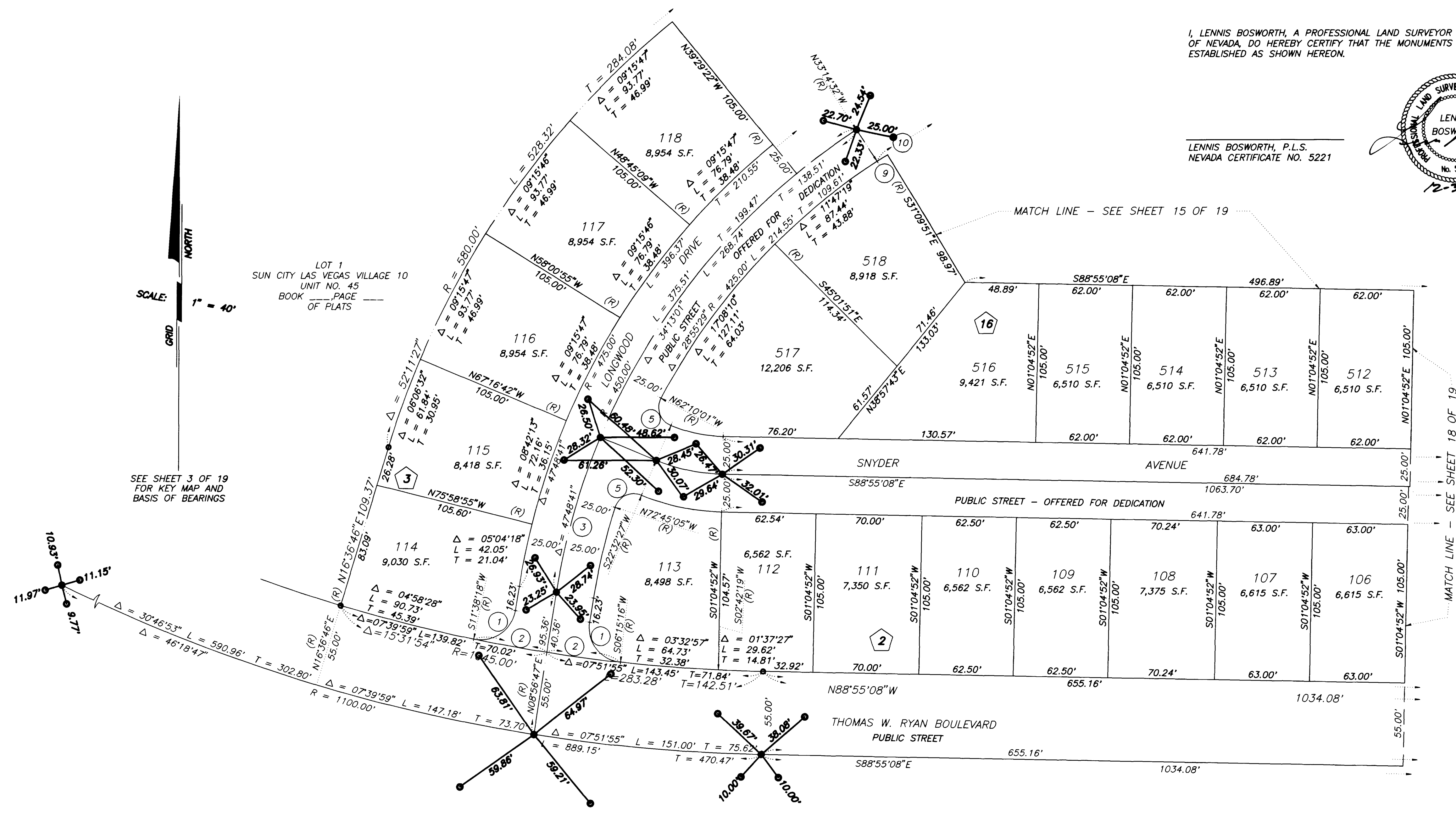
AT SUMMERLIN  
A PLANNED DEVELOPMENT AND COMMON INTEREST COMMUNITY

BEING A SUBDIVISION OF A PORTION OF PARCEL 1 AS SHOWN BY MAP THEREOF ON FILE IN FILE \_\_\_\_\_, PAGE \_\_\_\_\_ OF PARCEL MAPS IN THE CLARK COUNTY RECORDER'S OFFICE, CLARK COUNTY, NEVADA, LYING WITHIN SECTIONS 13 AND 24, TOWNSHIP 20 SOUTH, RANGE 59 EAST, M.D.M., CITY OF LAS VEGAS, CLARK COUNTY, NEVADA

I, LENNIS BOSWORTH, A PROFESSIONAL LAND SURVEYOR REGISTERED IN THE STATE OF NEVADA, DO HEREBY CERTIFY THAT THE MONUMENTS HAVE BEEN SET AND TIES ESTABLISHED AS SHOWN HEREON.



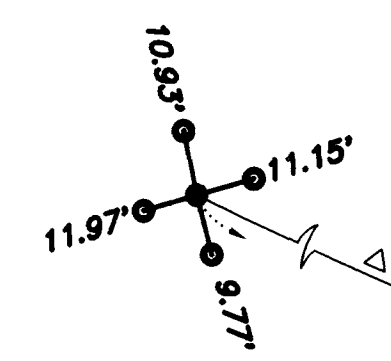
LENNIS BOSWORTH, P.L.S.  
NEVADA CERTIFICATE NO. 5221



LOT 1  
SUN CITY LAS VEGAS VILLAGE 10  
UNIT NO. 45  
BOOK \_\_\_\_\_ PAGE \_\_\_\_\_  
OF PLATS

SCALE: 1" = 40'

SEE SHEET 3 OF 19  
FOR KEY MAP AND  
BASIS OF BEARINGS



CURVE	DELTA	RADIUS	LENGTH	TANGENT
1	92°41'31"	23.00'	37.21'	24.11'
2	02°41'31"	1045.00'	49.10'	24.55'
3	13°35'40"	450.00'	106.77'	53.64'
4	08°18'08"	425.00'	61.58'	30.85'
5	95°17'32"	13.00'	21.62'	14.26'
6	21°27'35"	145.00'	54.31'	27.48'
7	21°27'35"	120.00'	44.95'	22.74'
8	21°27'35"	95.00'	35.58'	18.00'
9	02°04'41"	225.00'	8.16'	4.08'
10	34°19'24"	225.00'	134.79'	69.48'

### LEGEND

- SET 5/8" REBAR AND ALUM. CAP STAMPED P.L.S. 5221 W/ ALUMINUM REFERENCE TIES IN TOP OF CURB (UNLESS OTHERWISE NOTED)
- REFERENCE POINT
- 518 LOT NUMBER  
TOTAL RESIDENTIAL LOTS = 525  
TOTAL COMMON LOTS = 9
- 16 BLOCK NUMBER
- ① CURVE NUMBER
- SUBDIVISION BOUNDARY LINE
- STREET CENTERLINE

**NOTE:**  
FOR SIDE PROPERTY LINES: SET CONCRETE NAIL AND TIN IN THE REAR WALL ON THE PROPERTY LINE PROJECTED. SET SAWCUT IN THE BACK OF CURB AT THE FRONT OF THE LOT ON THE PROPERTY LINE PROJECTED.

SET 2"x2" HUB AND TACK AT LOT CORNERS WHERE THERE IS NO BLOCK WALL.

**NOTE:**  
DIRECT VEHICULAR ACCESS TO THOMAS W. RYAN BLVD. FROM ADJACENT LOTS IS PROHIBITED.

## MONUMENT TIE MAP

