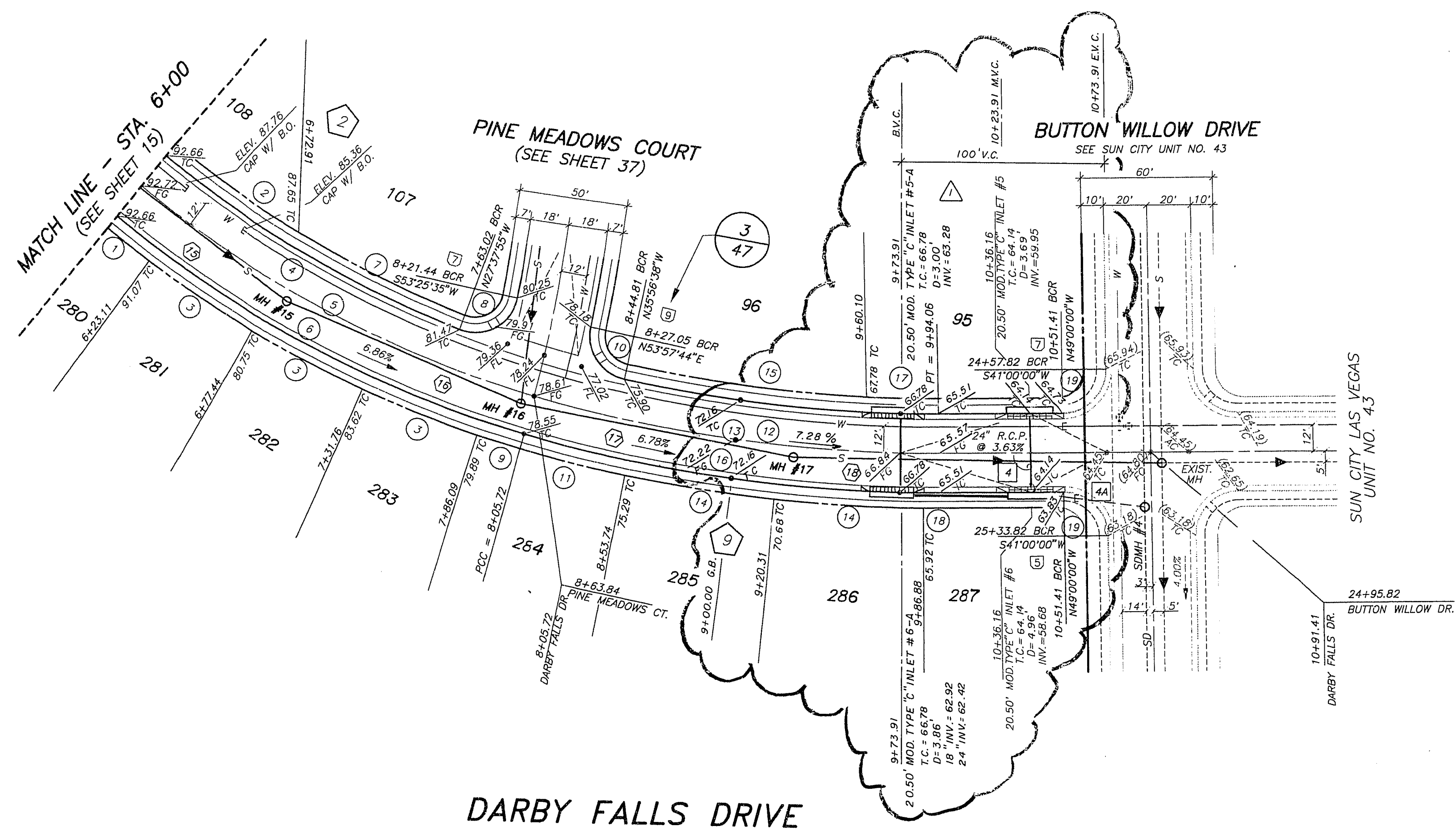


PROFILE
SCALE: HORIZ. 1" = 40'
VERT. 1" = 4'



SEWER LINE TABLE

LINE	BEARING	DISTANCE
15	N78°51'57"E	84.87'
16	S64°42'48"W	117.28'
17	S52°22'42"W	127.33'
18	N42°09'28"E	119.53'

MH COORDINATES

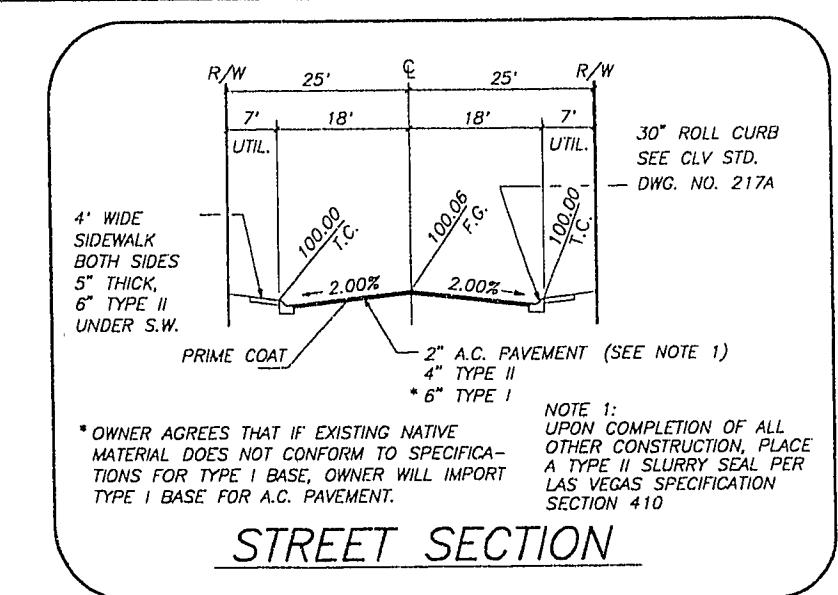
MH#	NORTH	EAST
15	531333.570	573841.710
16	531383.866	573947.754
17	531481.395	574048.609
EXIST. MH	531587.073	574162.398

STORM DRAIN LINE TABLE

LINE	BEARING	DISTANCE
4	N49°00'00"W	35.00'
4A	N48°31'03"E	10.00'

STORM DRAIN MH COORDINATES

INLET#	NORTH	EAST
5	531556.695	574105.515
6	531533.077	574132.685

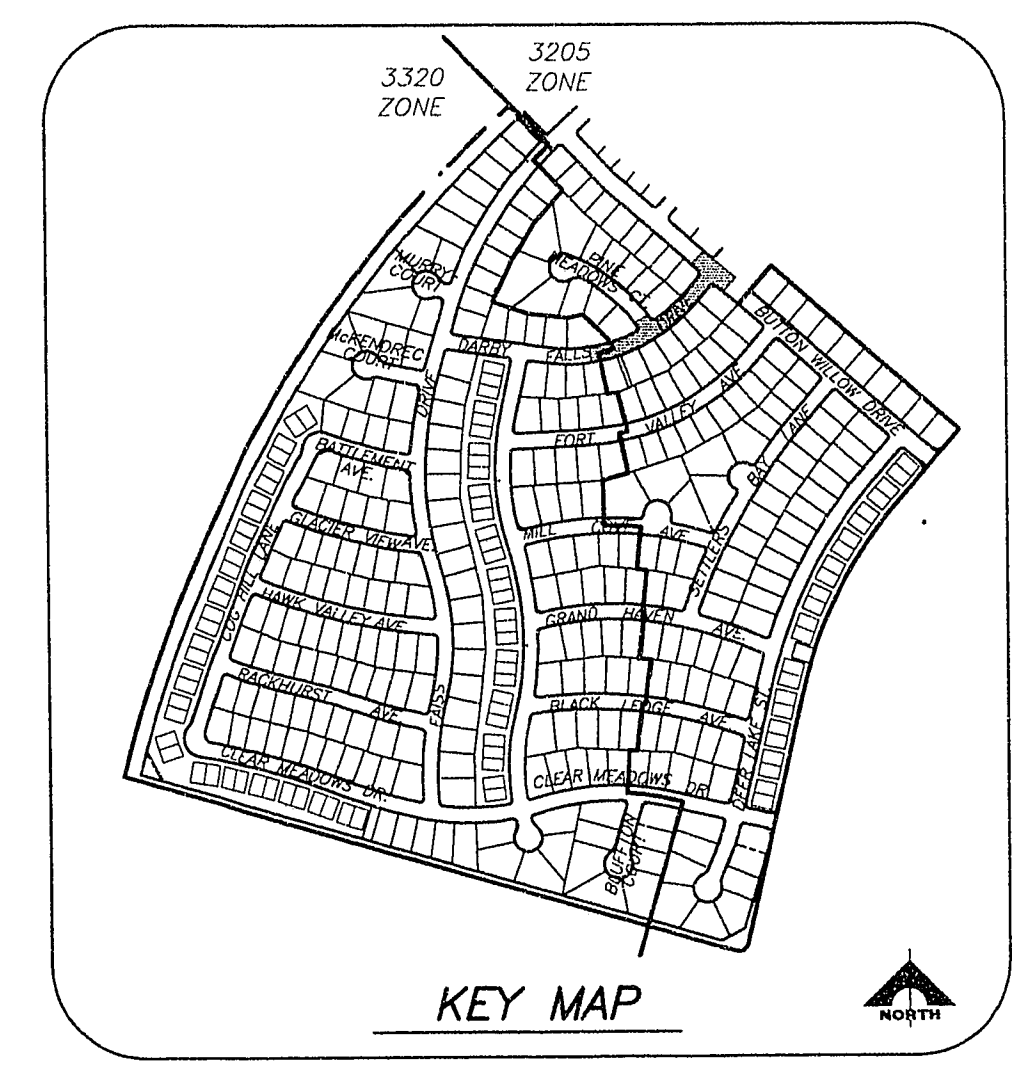


OWNER AGREES THAT IF EXISTING NATIVE MATERIAL DOES NOT CONFORM TO SPECIFICATIONS FOR TYPE I BASE, OWNER WILL IMPORT LAS VEGAS SPECIFICATION TYPE I BASE FOR A.C. PAVEMENT.

NOTE 1: UPON COMPLETION OF ALL OTHER CONSTRUCTION, PLACE A TYPE II SLURRY SEAL PER LAS VEGAS SPECIFICATION SECTION #10

CURVE DATA TABLE

CURVE	DELTA	RADIUS	LENGTH	TANGENT
1	02°38'55"	518.000'	23.946'	11.975'
2	08°48'22"	482.000'	74.081'	37.114'
3	06°13'32"	518.000'	56.284'	28.170'
4	18°40'52"	482.000'	157.155'	79.281'
5	23°34'26"	500.000'	205.721'	104.337'
6	23°34'26"	518.000'	213.127'	108.093'
7	09°52'31"	482.000'	83.076'	41.841'
8	08°58'10"	20.000'	34.537'	23.353'
9	02°14'55"	518.000'	20.329'	10.166'
10	89°54'22"	20.000'	31.383'	19.957'
11	04°12'04"	673.000'	49.347'	24.884'
12	10°07'12"	637.000'	112.512'	56.403'
13	16°28'32"	655.000'	188.347'	94.828'
14	05°49'23"	673.000'	68.398'	34.228'
15	13°03'22"	637.000'	143.155'	72.893'
16	16°28'32"	673.000'	193.523'	97.434'
17	02°58'10"	637.000'	32.643'	16.325'
18	00°37'42"	673.000'	7.380'	3.690'
19	90°00'00"	20.000'	31.416'	20.000'



RECOMMENDED BY: SONNY WALLACE, INC. ENGINEERING/ARCHITECTURE
 P.E. NO. 10118
 1555 SOUTH RAINBOW BLVD., LAS VEGAS, NEVADA 89102
 DATE: 12/28/23
 DESCRIPTION: REVISED GRADES
 C.L.V. DATE: 12/13/24

DEL WEBB COMMUNITIES, INC.
 SUN CITY LAS VEGAS UNIT NO. 44
 DARBY FALLS DRIVE