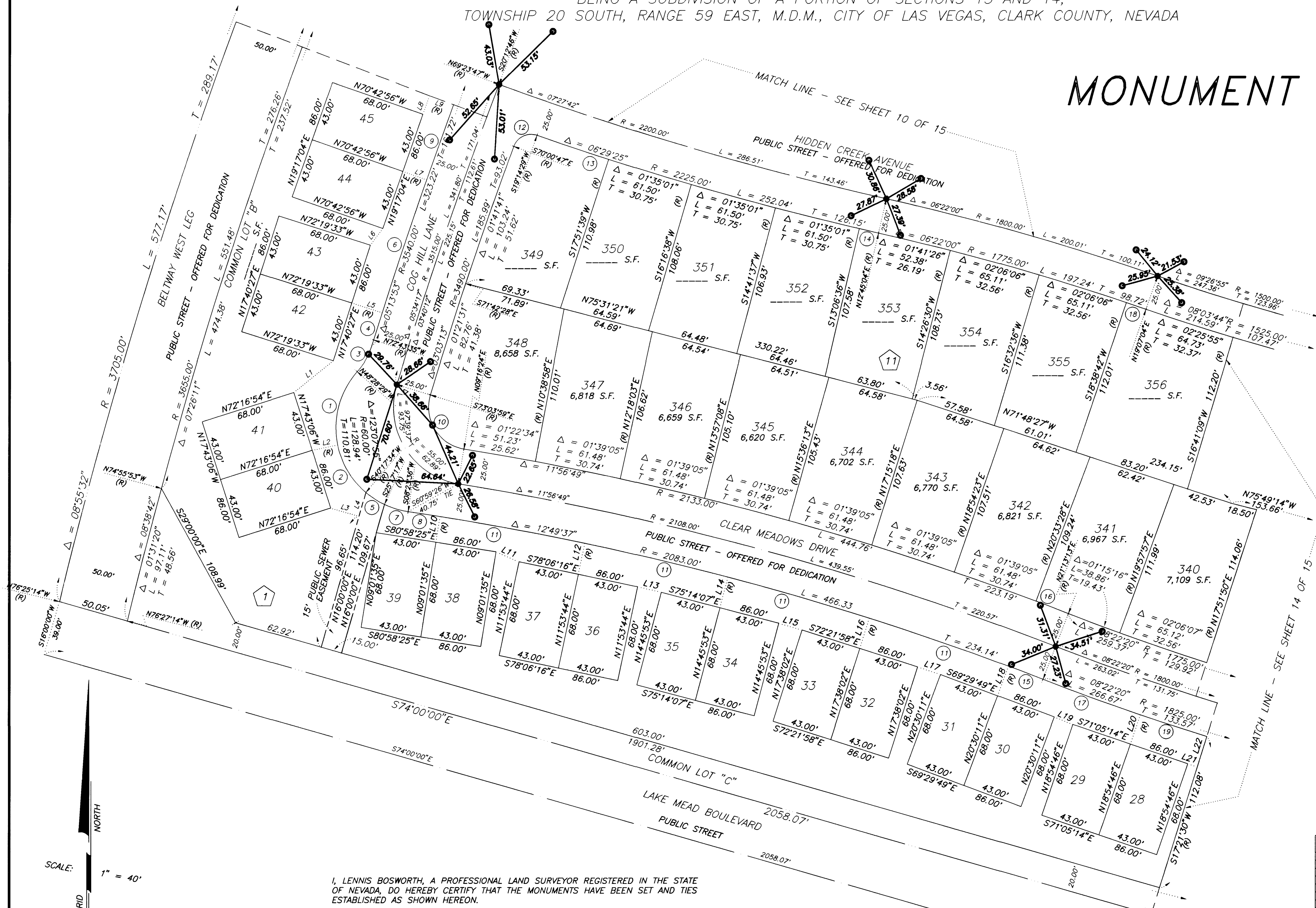


# FINAL MAP OF SUN CITY LAS VEGAS - UNIT NO. 44

AT SUMMERLIN  
A PLANNED DEVELOPMENT AND COMMON INTEREST COMMUNITY

BEING A SUBDIVISION OF A PORTION OF SECTIONS 13 AND 14,  
TOWNSHIP 20 SOUTH, RANGE 59 EAST, M.D.M., CITY OF LAS VEGAS, CLARK COUNTY, NEVADA

## MONUMENT TIE MAP



### LEGEND

- SET 5/8" REBAR AND ALUM. CAP STAMPED P.L.S. 7755 W/ALUMINUM REFERENCE TIES IN TOP OF CURB (UNLESS OTHERWISE NOTED)
- 345 LOT NUMBER  
TOTAL RESIDENTIAL LOTS = 402  
TOTAL COMMON LOTS = 6
- ⑪ BLOCK NUMBER
- ① CURVE NUMBER
- L1 LINE SEGMENT NUMBER
- SUBDIVISION BOUNDARY LINE
- STREET CENTERLINE

NOTE:  
FOR SIDE PROPERTY LINES: SET CONCRETE NAIL AND BRASS TAG STAMPED PLS 7755 IN THE REAR WALL ON THE PROPERTY LINE PROJECTED. SET SAWCUT IN THE BACK OF CURB AT THE FRONT OF THE LOT ON THE PROPERTY LINE PROJECTED.

SET 2"x2" HUB AND TACK AT LOT CORNERS WHERE THERE IS NO BLOCK WALL.

NOTE:  
DIRECT VEHICULAR ACCESS TO THE BELTWAY WEST LEG OR LAKE MEAD BLVD. FROM ABUTTING LOTS IS PROHIBITED.

NOTE:  
LOTS 28 THRU 45, INCLUSIVE, CONTAIN 2,924 SQUARE FEET EACH.

LINE	BEARING	DISTANCE
L1	N51°12'54"E	35.99'
L2	N78°16'55"E	18.41'
L3	S74°00'00"E	20.88'
L4	N16°00'00"E	17.55'
L5	S72°19'33"E	22.64'
L6	N36°44'08"E	14.81'
L7	S70°42'56"E	18.00'
L8	N20°05'23"E	14.00'
L9	S69°47'52"E	18.26'
L10	N09°01'35"E	18.45'
L11	S66°31'31"E	17.76'
L12	N11°53'44"E	22.45'
L13	S76°40'11"E	17.20'
L14	N14°45'33"E	22.45'
L15	S73°48'02"E	17.20'
L16	N17°38'02"E	22.45'
L17	S71°26'04"E	17.21'
L18	N20°30'11"E	22.30'
L19	S67°30'50"E	14.20'
L20	N18°54'46"E	22.00'
L21	S72°38'30"E	7.12'
L22	N17°21'30"E	22.49'

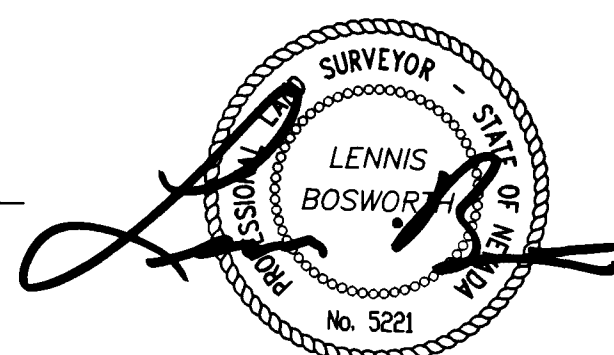
CURVE	DELTA	RADIUS	LENGTH	TANGENT
1	5°14'36"	60.00'	55.76'	30.07'
2	37°59'21"	60.00'	39.78'	20.65'
3	24°15'08"	50.00'	21.18'	10.74'
4	00°24'02"	3540.00'	24.75'	12.37'
5	15°00'17"	60.00'	15.71'	7.90'
6	01°36'37"	3540.00'	99.49'	49.75'
7	16°53'41"	60.00'	17.69'	8.91'
8	00°37'59"	2083.00'	23.01'	11.51'
9	00°55'04"	3540.00'	56.70'	28.35'
10	97°39'37"	30.00'	51.13'	34.31'
11	02°52'09"	2083.00'	104.31'	52.17'
12	89°15'16"	13.00'	20.25'	12.83'
13	01°22'50"	2225.00'	53.61'	26.81'
14	00°21'32"	2225.00'	13.94'	6.97'
15	00°43'02"	2083.00'	26.07'	13.04'
16	00°39'45"	2133.00'	24.86'	12.33'
17	02°18'27"	1825.00'	73.50'	36.75'
18	00°28'22"	1775.00'	14.65'	7.32'
19	01°33'16"	1825.00'	49.51'	24.76'

SCALE: 1" = 40'

SEE SHEET 2 FOR KEY MAP AND BASIS OF BEARINGS

I, LENNIS BOSWORTH, A PROFESSIONAL LAND SURVEYOR REGISTERED IN THE STATE OF NEVADA, DO HEREBY CERTIFY THAT THE MONUMENTS HAVE BEEN SET AND TIES ESTABLISHED AS SHOWN HEREON.

LENNIS BOSWORTH, P.L.S.  
NEVADA CERTIFICATE NO. 5221



8-26-98

