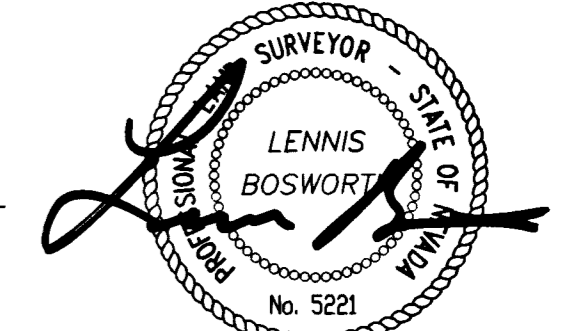


FINAL MAP OF SUN CITY LAS VEGAS - UNIT NO. 44 AT SUMMERLIN A PLANNED DEVELOPMENT AND COMMON INTEREST COMMUNITY

BEING A SUBDIVISION OF A PORTION OF SECTIONS 13 AND 14,
TOWNSHIP 20 SOUTH, RANGE 59 EAST, M.D.M., CITY OF LAS VEGAS, CLARK COUNTY, NEVADA

I, LENNIS BOSWORTH, A PROFESSIONAL LAND SURVEYOR REGISTERED IN THE STATE OF NEVADA, DO HEREBY CERTIFY THAT THE MONUMENTS HAVE BEEN SET AND TIES ESTABLISHED AS SHOWN HEREON.



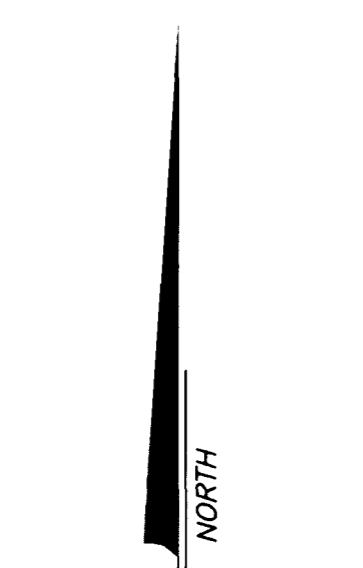
8-26-98



MATCH LINE SEE SHEET 7 OF 15

CURVE	DELTA	RADIUS	LENGTH	TANGENT
1	05°08'51"	645.00'	57.95'	28.99'
2	01°25'31"	1050.00'	26.12'	13.06'
3	04°16'08"	1050.00'	78.23'	39.13'
4	23°26'01"	645.00'	263.80'	133.77'
5	06°19'57"	1050.00'	116.05'	58.08'
6	01°25'35"	1050.00'	26.14'	13.07'
7	23°06'34"	595.00'	239.98'	121.65'
8	02°23'54"	1075.00'	45.00'	22.50'
9	01°01'17"	1100.00'	19.61'	9.80'
10	69°12'50"	13.00'	15.70'	8.97'
11	10°11'44"	1100.00'	195.74'	98.13'
12	105°38'36"	13.00'	23.97'	17.14'
13	77°13'25"	13.00'	17.52'	10.38'
14	97°58'06"	13.00'	22.23'	14.95'
15	00°37'39"	935.00'	10.24'	5.12'
16	00°54'42"	985.00'	15.67'	7.84'
17	04°43'21"	1287.00'	106.08'	53.07'
18	175°7'39"	1237.00'	387.77'	193.49'
19	82°50'39"	13.00'	18.80'	11.47'
20	05°51'32"	1900.00'	194.29'	97.23'

LINE	BEARING	DISTANCE
L1	S79°27'17"E	19.72'
L2	N76°12'15"E	18.00'
L3	S80°31'09"E	18.00'
L4	S81°56'44"E	18.01'
L5	N82°32'12"E	18.01'
L6	N83°57'47"E	18.00'
L7	S88°16'41"E	18.00'
L8	S89°42'16"E	18.01'



SEE SHEET 2 FOR KEY MAP AND BASIS OF BEARINGS

NOTE:
FOR SIDE PROPERTY LINES: SET CONCRETE NAIL AND BRASS TAG STAMPED PLS 7755 IN THE REAR WALL ON THE PROPERTY LINE PROJECTED. SET SAWCUT IN THE BACK OF CURB AT THE FRONT OF THE LOT ON THE PROPERTY LINE PROJECTED.

SET 2"x2" HUB AND TACK AT LOT CORNERS WHERE THERE IS NO BLOCK WALL.

NOTE:
LOTS 304 THRU 315, INCLUSIVE, CONTAIN 2,584 SQUARE FEET EACH.

- LEGEND**
- SET 5/8" REBAR AND ALUM. CAP STAMPED P.L.S. 7755 W/ ALUMINUM REFERENCE TIES IN TOP OF CURB (UNLESS OTHERWISE NOTED)
 - 189 LOT NUMBER
 - TOTAL RESIDENTIAL LOTS = 402
 - TOTAL COMMON LOTS = 6
 - 6 BLOCK NUMBER
 - 1 CURVE NUMBER
 - L1 LINE SEGMENT NUMBER
 - STREET CENTERLINE

PLOTTER: DAVIDSON

MONUMENT TIE MAP

FINAL MAP OF SUN CITY LAS VEGAS - UNIT NO. 44

AT SUMMERLIN
A PLANNED DEVELOPMENT AND COMMON INTEREST COMMUNITY
BEING A SUBDIVISION OF A PORTION OF SECTIONS 13 AND 14,
TOWNSHIP 20 SOUTH, RANGE 09 EAST, M.D.M., CITY OF LAS VEGAS, CLARK COUNTY, NEVADA

A FINAL PLANNING & DEVELOPMENT MAP SUBMITTED TO THE BOARD OF COUNTY COMMISSIONERS OF CLARK COUNTY, NEVADA, FOR APPROVAL AND RECORDATION ON FEBRUARY 11, 1994.

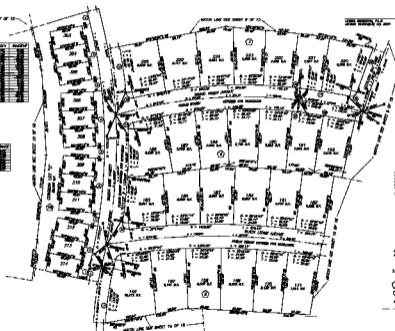


LOT NO.	AREA	ACRES	LENGTH	WIDTH
1				
2				
3				
4				
5				
6				
7				
8				
9				
10				
11				
12				
13				
14				
15				
16				
17				
18				
19				
20				
21				
22				
23				
24				
25				
26				
27				
28				
29				
30				
31				
32				
33				
34				
35				
36				
37				
38				
39				
40				
41				
42				
43				
44				
45				
46				
47				
48				
49				
50				
51				
52				
53				
54				
55				
56				
57				
58				
59				
60				
61				
62				
63				
64				
65				
66				
67				
68				
69				
70				
71				
72				
73				
74				
75				
76				
77				
78				
79				
80				
81				
82				
83				
84				
85				
86				
87				
88				
89				
90				
91				
92				
93				
94				
95				
96				
97				
98				
99				
100				

LOT NO.	AREA	ACRES	LENGTH	WIDTH
1				
2				
3				
4				
5				
6				
7				
8				
9				
10				
11				
12				
13				
14				
15				
16				
17				
18				
19				
20				
21				
22				
23				
24				
25				
26				
27				
28				
29				
30				
31				
32				
33				
34				
35				
36				
37				
38				
39				
40				
41				
42				
43				
44				
45				
46				
47				
48				
49				
50				
51				
52				
53				
54				
55				
56				
57				
58				
59				
60				
61				
62				
63				
64				
65				
66				
67				
68				
69				
70				
71				
72				
73				
74				
75				
76				
77				
78				
79				
80				
81				
82				
83				
84				
85				
86				
87				
88				
89				
90				
91				
92				
93				
94				
95				
96				
97				
98				
99				
100				



37512



THIS MAP IS THE PROPERTY OF THE CITY OF LAS VEGAS AND IS NOT TO BE REPRODUCED OR TRANSMITTED IN ANY FORM OR BY ANY MEANS, ELECTRONIC OR MECHANICAL, INCLUDING PHOTOCOPYING, RECORDING, OR BY ANY INFORMATION STORAGE AND RETRIEVAL SYSTEM, WITHOUT THE EXPRESS WRITTEN PERMISSION OF THE CITY OF LAS VEGAS.

- LEGEND**
- MAIN ALLEY
 - DRIVE ALLEY
 - LOT DRIVE ALLEY
 - STREET CENTERLINE