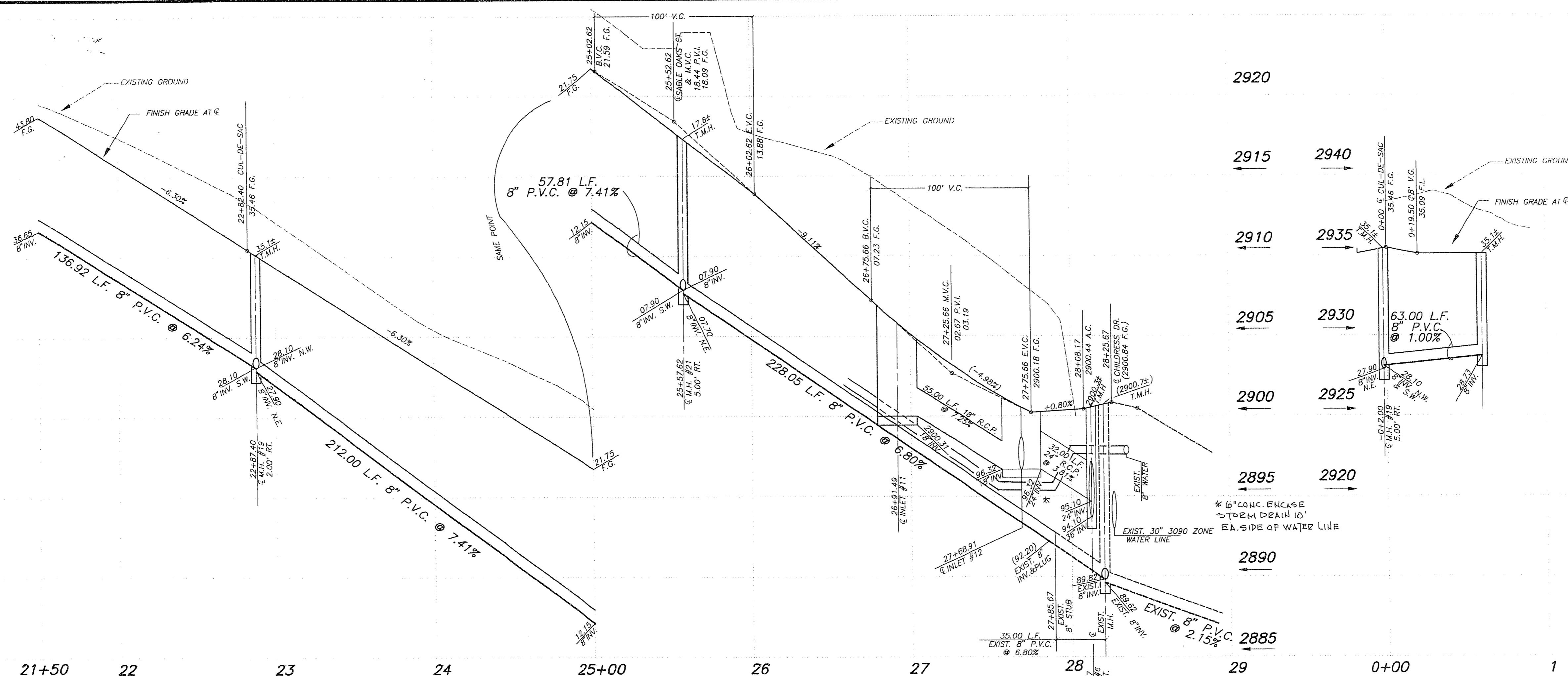


99-01-01

2945  
2940  
2935  
2930  
2925  
2920  
2915  
2910



**PROFILE**  
SCALE: HORIZ. 1" = 40'  
VERT. 1" = 4'

2920  
2915  
2910  
2905  
2900  
2895  
2890  
2885

**CUL-DE-SAC**  
SEWER PROFILES

21+50 22 23 24 25+00 26 27 28 29 0+00 1

**CURVE TABLE**

CURVE	DELTA	RADIUS	LENGTH	TANGENT
1	00°06'58"	2890.44'	5.86'	2.93'
2	00°12'25"	2854.44'	10.27'	5.13'
3	01°02'25"	2890.44'	66.52'	34.66'
4	66°57'33"	38.50'	44.99'	25.46'
5	01°34'39"	2854.44'	78.59'	39.30'
6	89°25'27"	20.00'	31.21'	19.80'
7	4°04'09"	38.50'	31.63'	16.77'
8	181°09'06"	38.50'	121.73'	-
9	6°07'24"	38.50'	45.10'	25.54'
10	01°40'54"	2854.44'	63.50'	41.78'
11	02°06'58"	2890.44'	106.75'	53.38'
12	01°28'15"	2854.44'	73.28'	36.64'
13	1°23'35"	2872.44'	604.80'	303.42'
14	00°06'54"	2872.44'	5.77'	2.88'
15	11°51'09"	2854.44'	590.48'	296.30'
16	38°14'52"	57.00'	38.05'	19.76'
17	89°15'07"	20.00'	31.12'	19.74'
18	02°04'37"	2890.44'	104.78'	52.39'
19	03°16'51"	2890.44'	165.51'	82.78'
20	01°12'14"	2850.44'	60.73'	30.37'
21	00°55'29"	2854.44'	46.07'	23.04'
22	90°00'00"	20.00'	31.42'	20.00'

**SEWER LINE TABLE**

LINE	BEARING	DISTANCE
19	S48°09'12"W	446.92'
20	S37°28'54"E	63.00'
21	N55°56'58"E	269.81'
22	N60°28'01"E	227.63'

**MH COORDINATES**

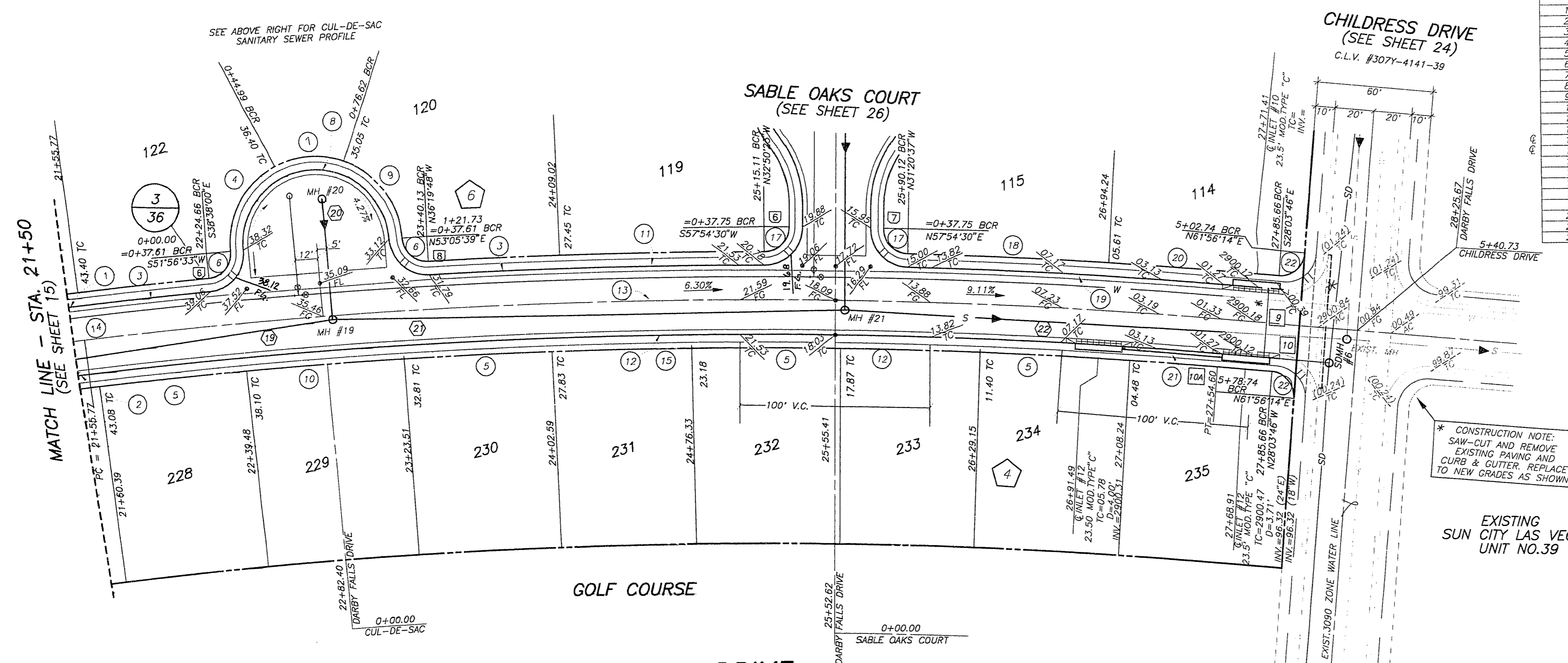
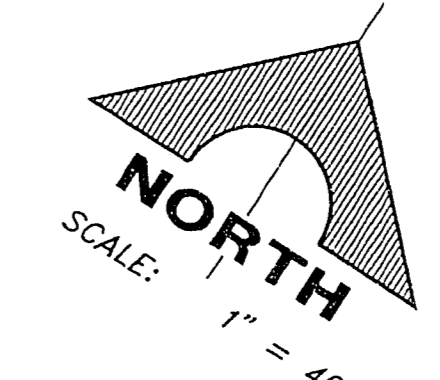
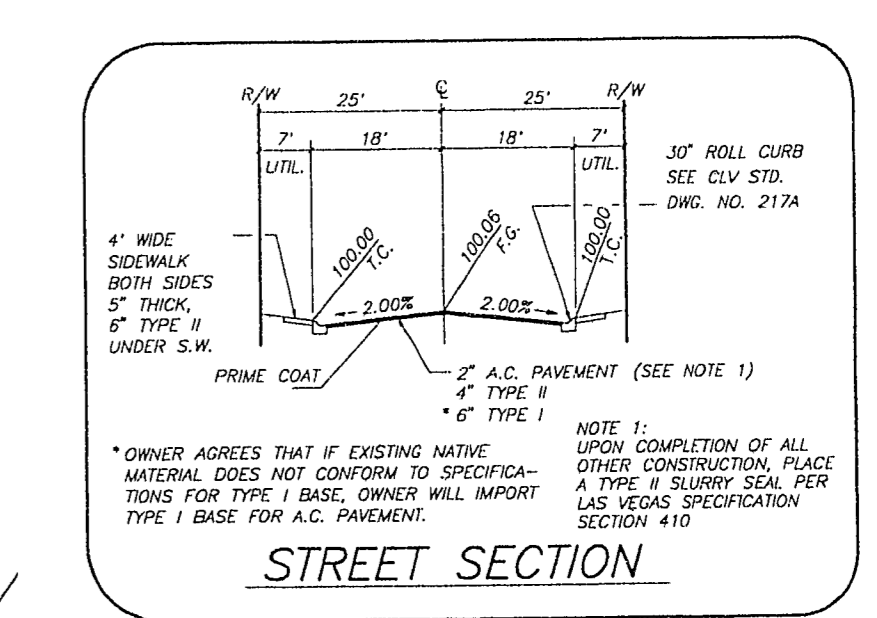
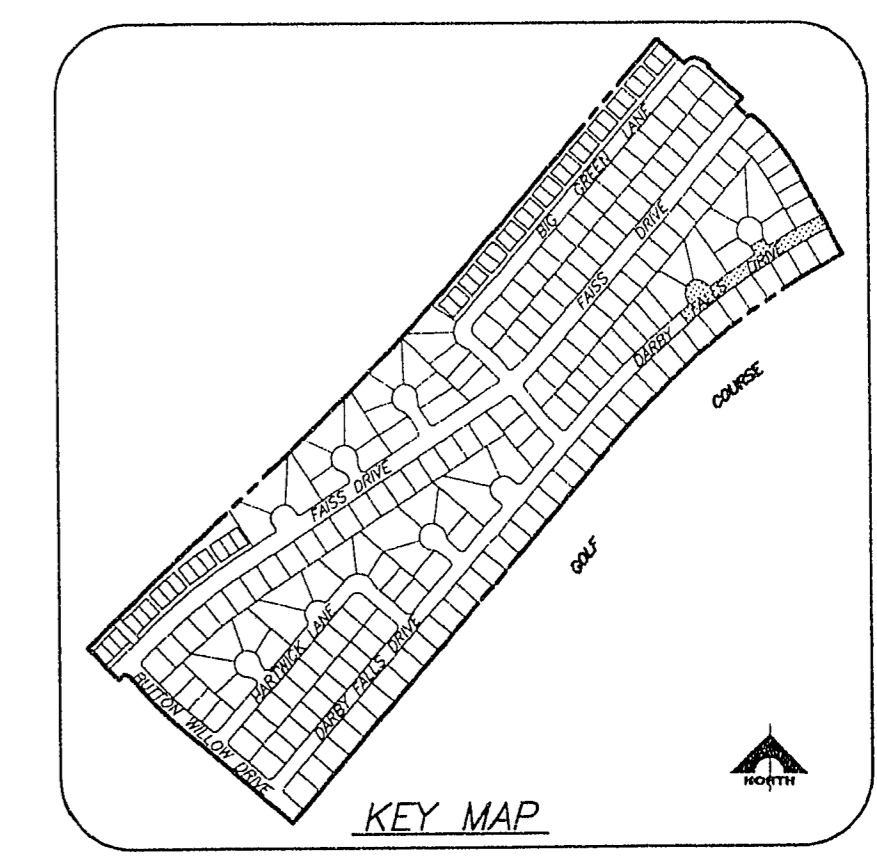
MH#	NORTH	EAST
19	533269.666	575669.030
20	533319.663	575660.714
21	533420.770	575922.582

**STORM DRAIN MH COORDINATES**

SDMH#	NORTH	EAST
6	533534.994	576150.148

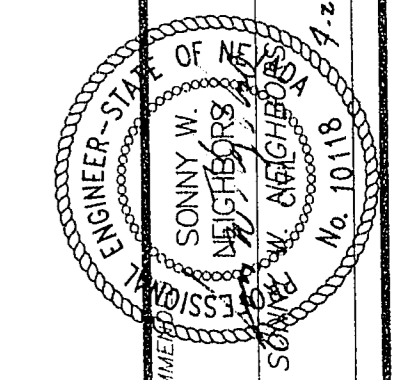
**STORM DRAIN LINE TABLE**

LINE	BEARING	DISTANCE
9	N28°03'46"W	36.00'
10	S81°58'14"W	32.00'
10A	S81°52'19"W	55.00'



CONSTRUCTION NOTE:  
SAW-CUT AND REMOVE  
EXISTING PAVING AND  
CURB & GUTTER. REPLACE  
TO NEW GRADES AS SHOWN.

JOB NO. 701.184  
DATE: 04/21/94  
DRAWING: C1431043-16  
BY: SNC



G. C. WALLACE, INC.  
Engineering/Architecture  
1555 SOUTH RAINBOW BLVD., LAS VEGAS, NEVADA 89102

DEL WEBB COMMUNITIES, INC.  
SUN CITY LAS VEGAS UNIT NO. 43  
DARBY FALLS DRIVE

APPROVED FOR CONSTRUCTION  
LWVWD DATE 5/12/94

SHEET  
16  
OF 38 SHEETS

107Y-4147-43