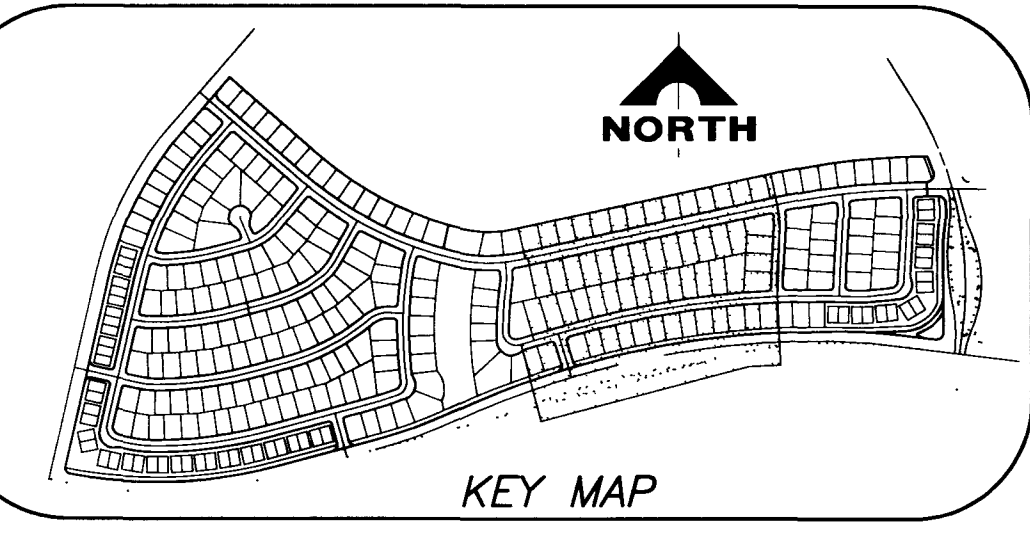


JOB NO. 701.182

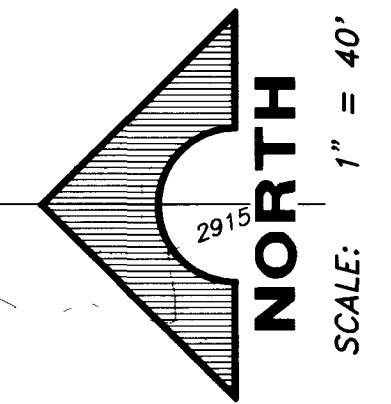
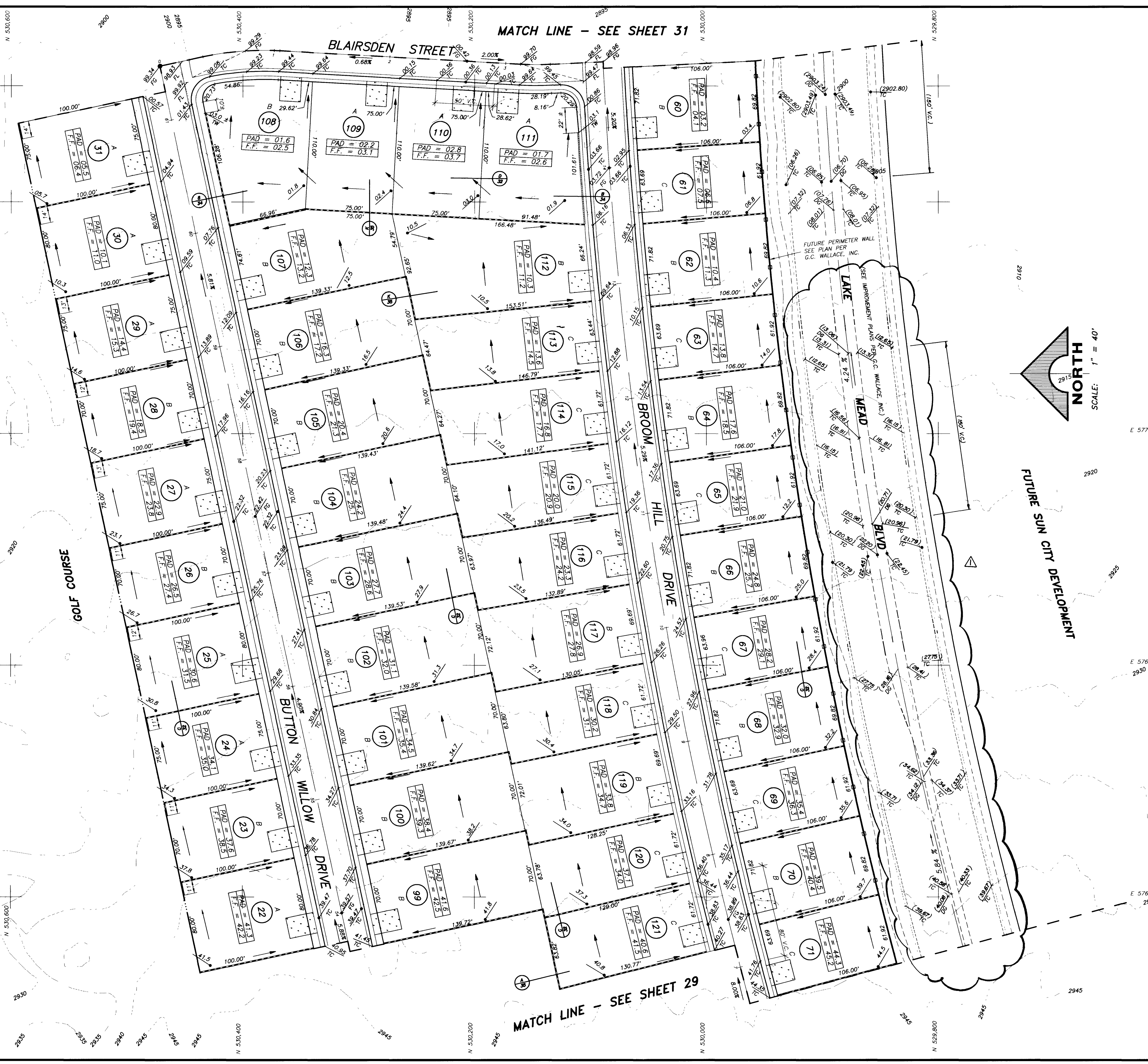
PLOTTED: 03/22/24 8:40 pm DRAWING: C:\DRAWINGS\DWG\421042-30 BY: DLW



- WALL NOTES:
- APPROVAL OF THESE PLANS BY THE CITY ENGINEER DOES NOT PERTAIN TO CONSTRUCTION OF NEW WALLS (RETAINING OR NON-RETAINING) OR MODIFICATIONS TO EXISTING WALLS.
  - ALL WALLS, NEW OR EXISTING, ARE REVIEWED BY THE CITY ENGINEER FOR GRADING RELATIONSHIPS ONLY.
  - ALL WALLS, RETAINING AND NON-RETAINING, MUST BE APPROVED AND A PERMIT OBTAINED FROM THE DEPARTMENT OF BUILDING AND SAFETY.

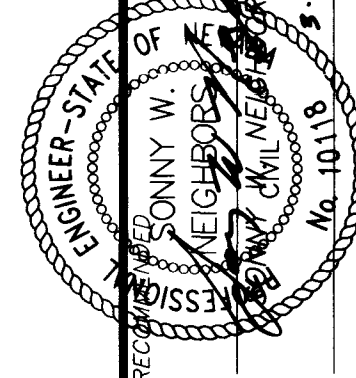
NOTE:  
DIMENSIONS SHOWN ON THIS PLAN ARE FOR INFORMATION ONLY AND SHALL NOT BE USED AS A SALES TOOL, BY SALES PERSONNEL OR PROSPECTIVE PURCHASERS. REFER TO FINAL RECORDED MAP FOR ALL LOT DIMENSIONS.

NOTE:  
FINISH FLOOR ELEVATIONS SHOWN ARE A MINIMUM ELEVATION



FUTURE SUN CITY DEVELOPMENT

I CERTIFY THAT THIS GRADING PLAN IS IN CONFORMANCE WITH THE APPROVED DRAINAGE STUDY ON FILE AT THE CITY OF LAS VEGAS FOR THIS PROJECT.



DEL WEBB COMMUNITIES, INC.  
SUN CITY LAS VEGAS UNIT NO. 42  
GRADING PLAN VI

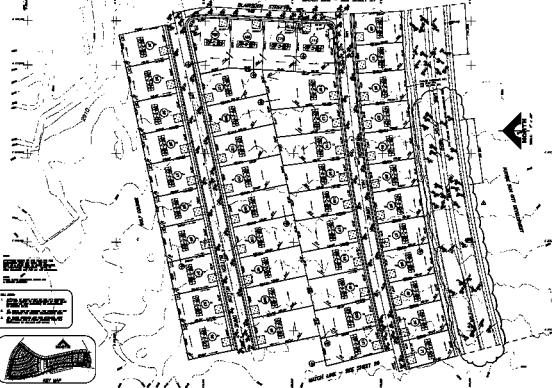
SHEET 30 OF 46 SHEETS

G.C. WALLACE, INC.  
Engineering/Architecture  
1555 SOUTH RAINBOW BLVD., LAS VEGAS, NEVADA 89102

10-10-18 1074-4141-42

MATCH LINE - SEE SHEET 31

MATCH LINE - SEE SHEET 30



**REVISIONS**

- 1. ALL LOTS
- 2. ALL LOTS
- 3. ALL LOTS
- 4. ALL LOTS



W.D.C. WILLIAMS, INC.  
 ENGINEERS & ARCHITECTS  
 1100 N. 10TH ST., SUITE 100  
 ARLINGTON, VA 22201  
 PHONE: (703) 261-1100  
 FAX: (703) 261-1101  
 WWW.WDCCO.COM