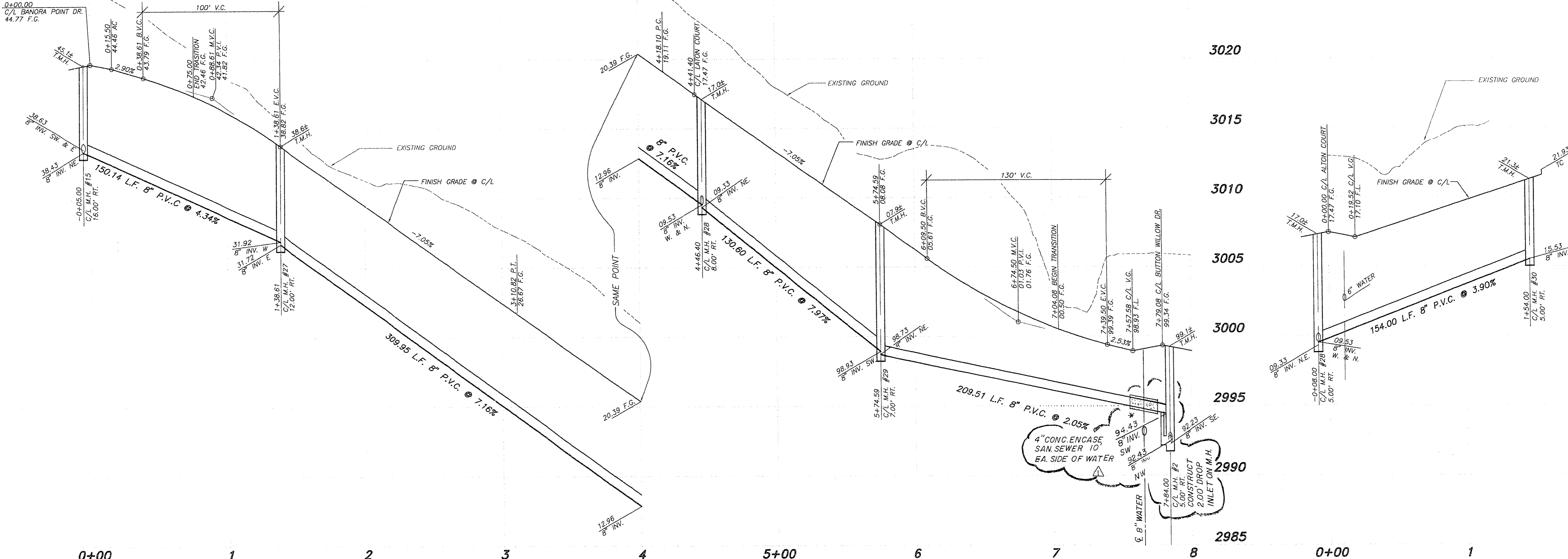
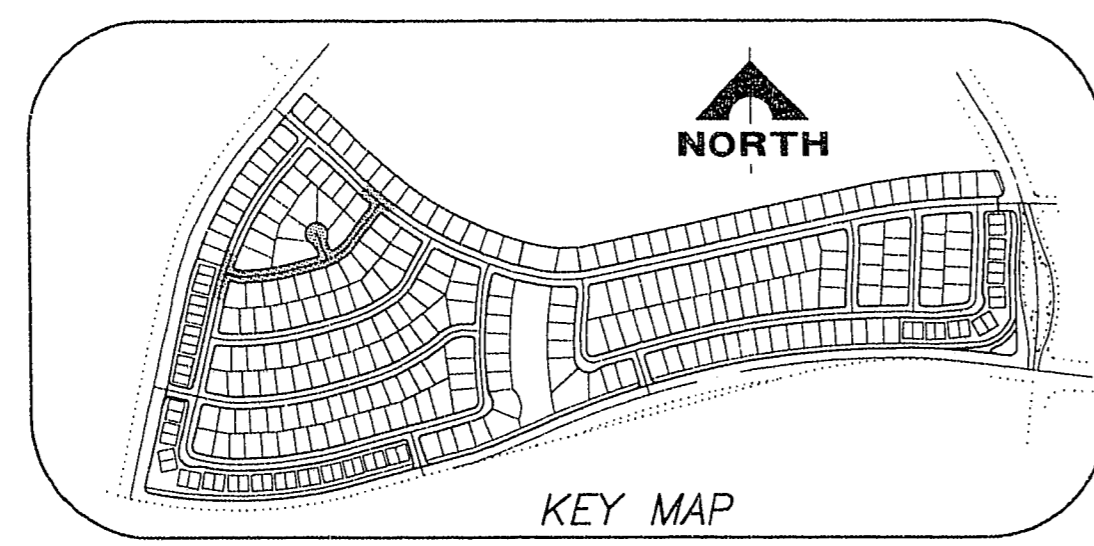


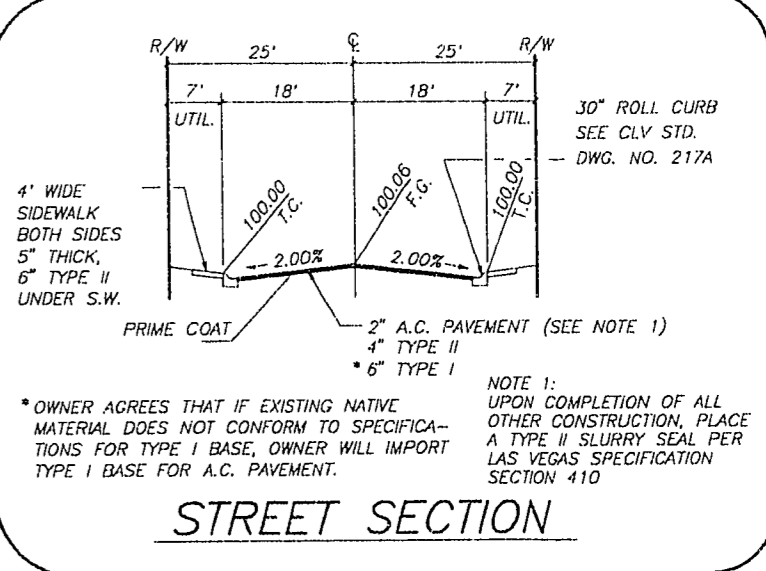
JOB NO. 701.182



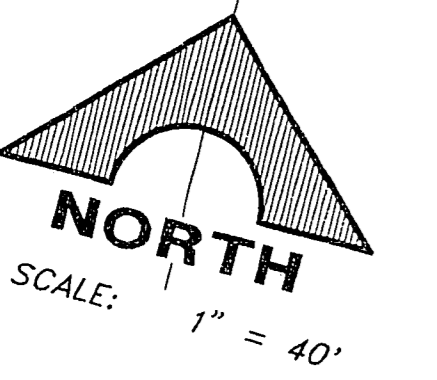
PROFILE
SCALE: HORIZ. 1" = 40'
VERT. 1" = 4'



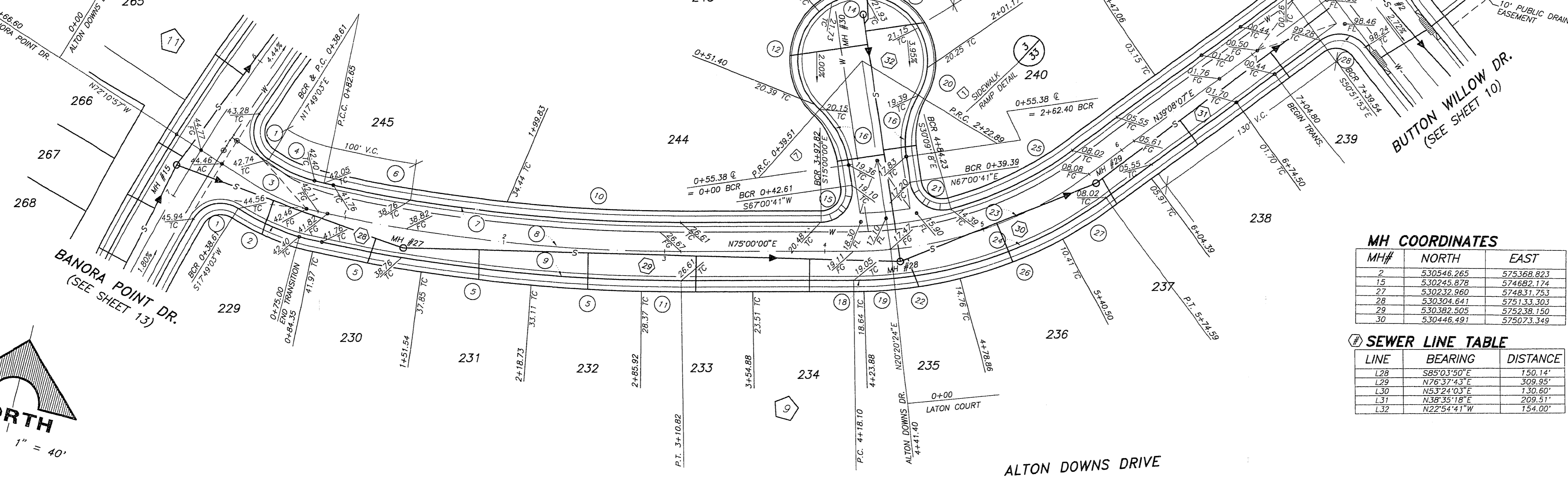
KEY MAP



STREET SECTION



NORTH
SCALE: 1" = 40'



MH COORDINATES

MH#	NORTH	EAST
2	530546.265	575368.823
15	530245.878	574682.124
27	530232.980	57481.733
28	530304.641	575133.303
29	530382.505	575238.150
30	530446.491	575073.349

SEWER LINE TABLE

LINE	BEARING	DISTANCE
L28	S85°07'50"E	150.14'
L29	N76°37'43"E	308.95'
L30	N53°24'03"E	130.60'
L31	N38°35'18"E	209.51'
L32	N22°54'41"W	154.00'

CURVE TABLE

CURVE	DELTA	RADIUS	LENGTH	TANGENT
1	91°51'01"	20.00'	32.08'	20.66'
2	20°11'11"	143.00'	50.38'	25.45'
3	20°11'11"	125.00'	44.04'	22.75'
4	20°11'11"	107.00'	37.70'	19.05'
5	03°43'10"	1053.00'	68.36'	34.19'
6	06°21'31"	1017.00'	112.87'	56.49'
7	12°37'51"	1017.00'	224.20'	112.56'
8	12°37'51"	1035.00'	228.17'	114.55'
9	12°37'51"	1053.00'	232.13'	116.54'
10	06°16'21"	1017.00'	111.34'	55.29'
11	01°22'42"	1053.00'	26.33'	13.67'
12	90°12'48"	40.50'	63.77'	40.65'
13	57°53'03"	45.50'	45.97'	25.16'
14	259°25'49"	40.50'	183.38'	—
15	9°58'19"	20.00'	34.21'	23.00'
16	39°42'54"	57.00'	39.51'	20.59'
17	79°38'05"	40.50'	56.28'	33.78'
18	01°15'35"	268.00'	6.20'	3.10'
19	04°00'51"	268.00'	18.78'	9.39'
20	25°36'17"	40.50'	18.10'	9.20'
21	97°08'58"	20.00'	33.92'	21.67'
22	12°36'01"	268.00'	58.94'	29.59'
23	35°51'53"	250.00'	156.49'	80.90'
24	35°51'53"	268.00'	167.78'	86.73'
25	20°42'16"	235.00'	83.86'	42.39'
26	14°07'37"	268.00'	66.08'	33.21'
27	07°48'42"	268.00'	36.54'	18.30'
28	88°36'47"	20.00'	30.93'	19.52'

REV.	DATE	DESCRIPTION	C.L.A.	DATE
1	10/10/04	INSTALL DEEP DUCT	10118	10/10/04

RECEIVED BY: [Signature]
DATE: 10/10/04
PROJECT: DEL WEBB COMMUNITIES, INC. NEIGHBORS
SUN CITY LAS VEGAS UNIT NO. 42
PLAN & PROFILE
ALTON DOWNS DRIVE & LATON COURT
No. 10118
3-23-94

G. C. WALLACE, INC.
Engineering/Architecture
1555 SOUTH RAINBOW BLVD./LAS VEGAS, NEVADA 89102

DEL WEBB COMMUNITIES, INC.
SUN CITY LAS VEGAS UNIT NO. 42
PLAN & PROFILE
ALTON DOWNS DRIVE & LATON COURT

SHEET
16
OF 46 SHEETS

10-10-104 1074-4141-42