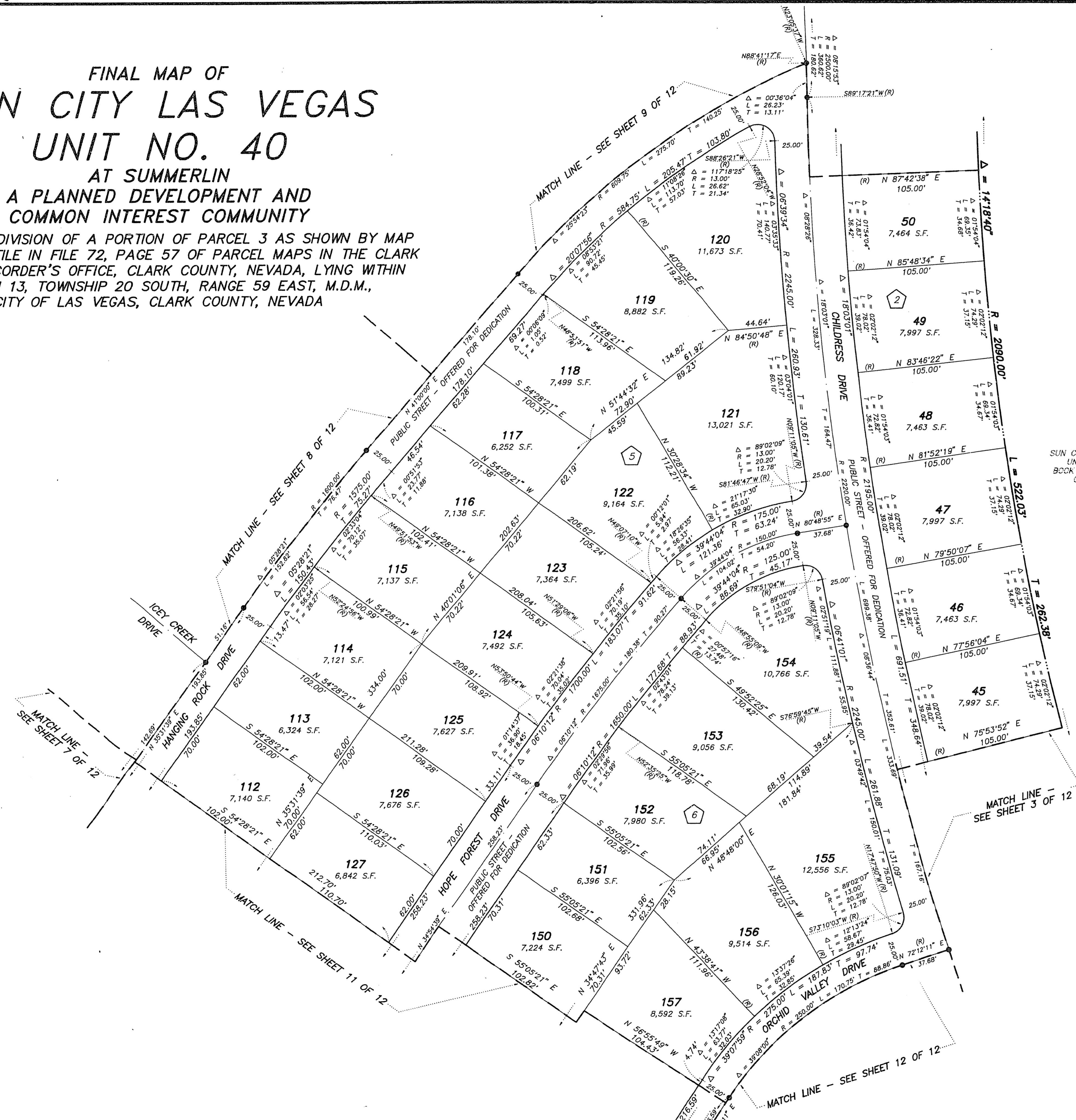


# FINAL MAP OF SUN CITY LAS VEGAS UNIT NO. 40

AT SUMMERLIN  
A PLANNED DEVELOPMENT AND  
COMMON INTEREST COMMUNITY

BEING A SUBDIVISION OF A PORTION OF PARCEL 3 AS SHOWN BY MAP  
THEREOF ON FILE IN FILE 72, PAGE 57 OF PARCEL MAPS IN THE CLARK  
COUNTY RECORDER'S OFFICE, CLARK COUNTY, NEVADA, LYING WITHIN  
SECTION 13, TOWNSHIP 20 SOUTH, RANGE 59 EAST, M.D.M.,  
CITY OF LAS VEGAS, CLARK COUNTY, NEVADA



SEE SHEET 2 FOR  
KEY MAP AND  
BASIS OF BEARING

SCALE: 1" = 40'

LOT 2  
SUN CITY LAS VEGAS  
UNIT NO. 31  
BLOCK 33, PAGE 01  
OF PLATS

NOTE:  
FOR SIDE PROPERTY LINES: SET CONCRETE  
NAIL AND TIN IN THE REAR WALL ON THE  
PROPERTY LINE PROJECTED. SET SAWCUT  
IN THE BACK OF CURB AT THE FRONT OF  
THE LOT ON THE PROPERTY LINE  
PROJECTED.  
SET 2"x2" HUB AND TACK AT LOT CORNERS  
WHERE THERE IS NO BLOCK WALL.

### LEGEND

- SET 5/8" REBAR AND ALUM. CAP  
STAMPED P.L.S. 7755 W/ ALUMINIUM  
CAP TIES IN TOP OF CURB  
(UNLESS OTHERWISE NOTED)
- 157 TOTAL RESIDENTIAL LOTS = 263  
COMMON LOTS IN SUBDIVISION = 8
- 6 BLOCK NUMBER
- SUBDIVISION BOUNDARY LINE
- STREET CENTERLINE