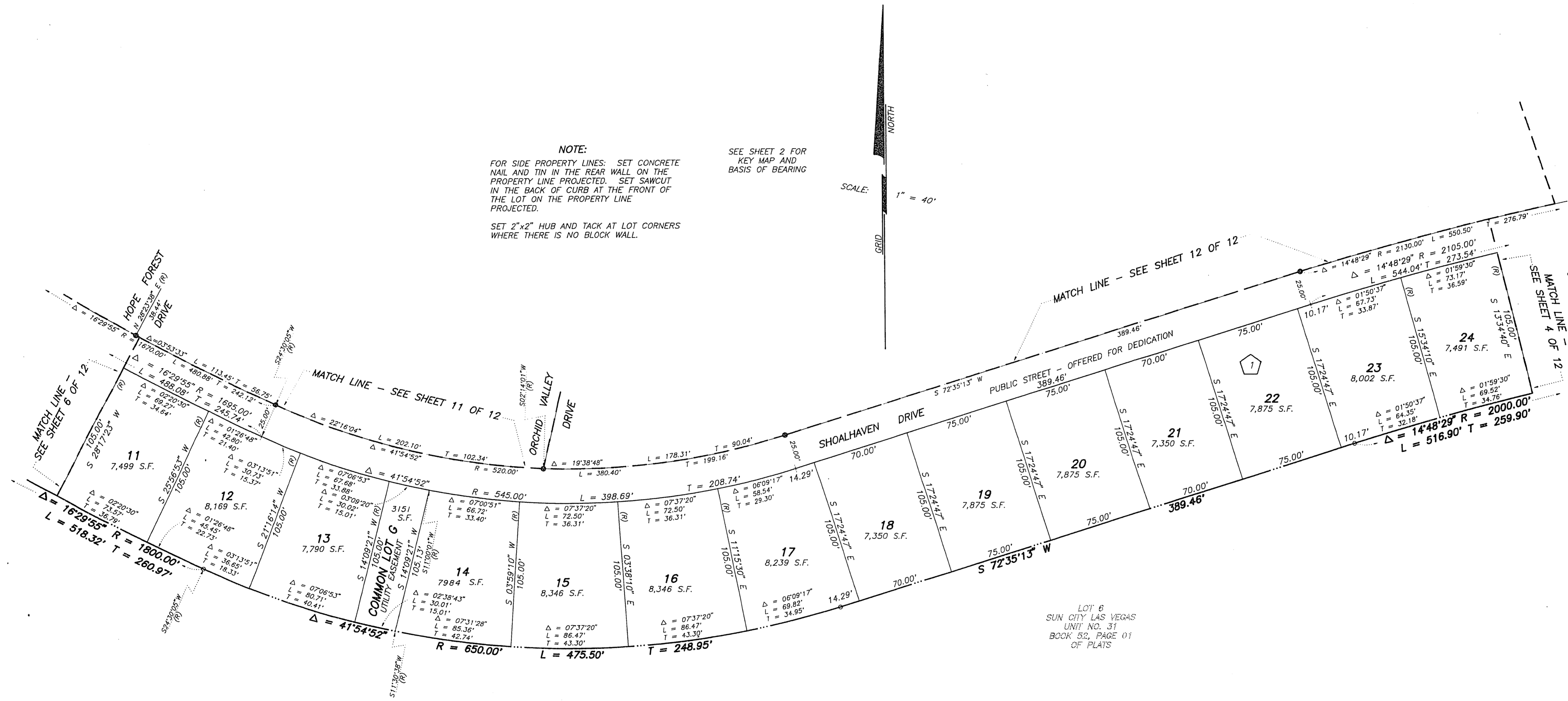
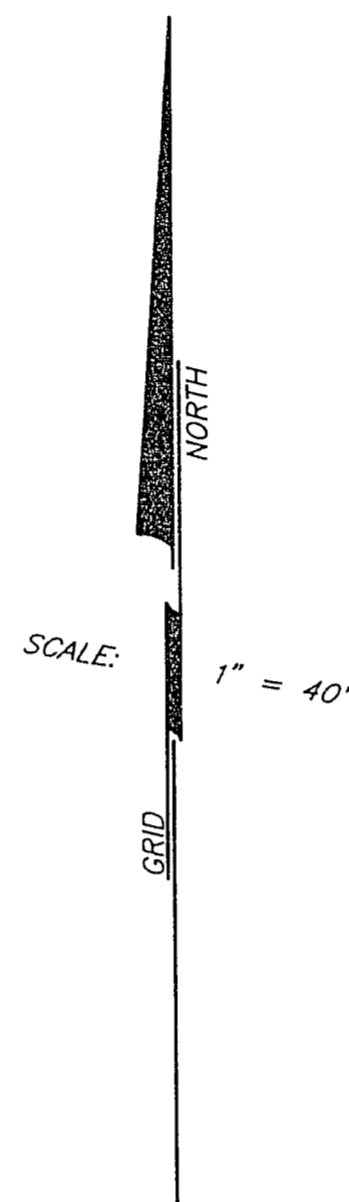


FINAL MAP OF  
**SUN CITY LAS VEGAS – UNIT NO. 40**  
 AT SUMMERLIN  
 A PLANNED DEVELOPMENT AND COMMON INTEREST COMMUNITY

BEING A SUBDIVISION OF A PORTION OF PARCEL 3 AS SHOWN BY MAP THEREOF ON FILE IN FILE 72, PAGE 57 OF PARCEL MAPS IN THE CLARK COUNTY RECORDER'S OFFICE, CLARK COUNTY, NEVADA, LYING WITHIN SECTION 13, TOWNSHIP 20 SOUTH, RANGE 59 EAST, M.D.M., CITY OF LAS VEGAS, CLARK COUNTY, NEVADA

**NOTE:**  
 FOR SIDE PROPERTY LINES: SET CONCRETE NAIL AND TIN IN THE REAR WALL ON THE PROPERTY LINE PROJECTED. SET SAWCUT IN THE BACK OF CURB AT THE FRONT OF THE LOT ON THE PROPERTY LINE PROJECTED.  
 SET 2"x2" HUB AND TACK AT LOT CORNERS WHERE THERE IS NO BLOCK WALL.

SEE SHEET 2 FOR KEY MAP AND BASIS OF BEARING



LOT 6  
 SUN CITY LAS VEGAS  
 UNIT NO. 31  
 BOOK 53, PAGE 01  
 OF PLATS

**LEGEND**

- SET 5/8" REBAR AND ALUM. CAP STAMPED P.L.S. 7755 W/ ALUMINIUM CAP TIES IN TOP OF CURB (UNLESS OTHERWISE NOTED)
- SET MONUMENTATION PER N.R.S. 278.371
- 24 LOT NUMBER  
 TOTAL RESIDENTIAL LOTS = 263  
 COMMON LOTS IN SUBDIVISION = 8
- ① BLOCK NUMBER
- SUBDIVISION BOUNDARY LINE
- STREET CENTERLINE