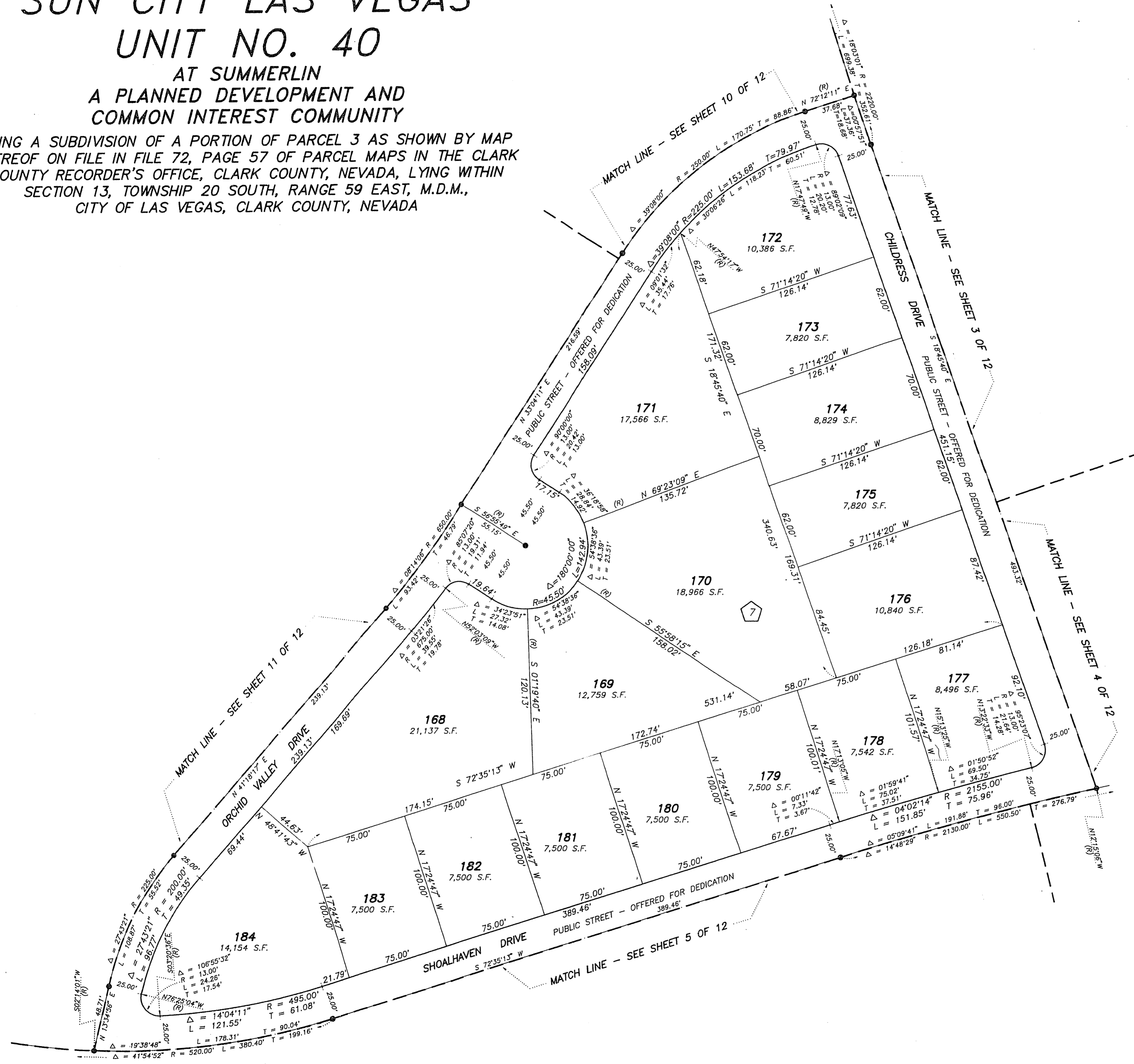


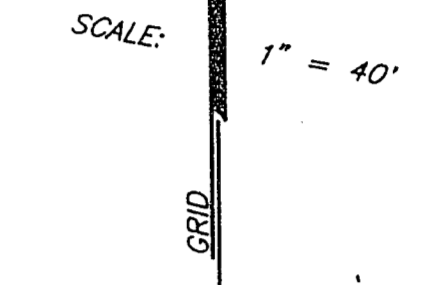
FINAL MAP OF
SUN CITY LAS VEGAS
 UNIT NO. 40

AT SUMMERLIN
 A PLANNED DEVELOPMENT AND
 COMMON INTEREST COMMUNITY

BEING A SUBDIVISION OF A PORTION OF PARCEL 3 AS SHOWN BY MAP
 THEREOF ON FILE IN FILE 72, PAGE 57 OF PARCEL MAPS IN THE CLARK
 COUNTY RECORDER'S OFFICE, CLARK COUNTY, NEVADA, LYING WITHIN
 SECTION 13, TOWNSHIP 20 SOUTH, RANGE 59 EAST, M.D.M.,
 CITY OF LAS VEGAS, CLARK COUNTY, NEVADA



SEE SHEET 2 FOR
 KEY MAP AND
 BASIS OF BEARING



NOTE:
 FOR SIDE PROPERTY LINES: SET CONCRETE
 NAIL AND TIN IN THE REAR WALL ON THE
 PROPERTY LINE PROJECTED. SET SAWCUT
 IN THE BACK OF CURB AT THE FRONT OF
 THE LOT ON THE PROPERTY LINE
 PROJECTED.
 SET 2"x2" HUB AND TACK AT LOT CORNERS
 WHERE THERE IS NO BLOCK WALL.

LEGEND

- SET 5/8" REBAR AND ALUM. CAP
 STAMPED P.L.S. 7755 W/ ALUMINIUM
 CAP TIES IN TOP OF CURB
 (UNLESS OTHERWISE NOTED)
- 184 LOT NUMBER
 TOTAL RESIDENTIAL LOTS = 263
 COMMON LOTS IN SUBDIVISION = 8
- 7 BLOCK NUMBER
- SUBDIVISION BOUNDARY LINE
- STREET CENTERLINE