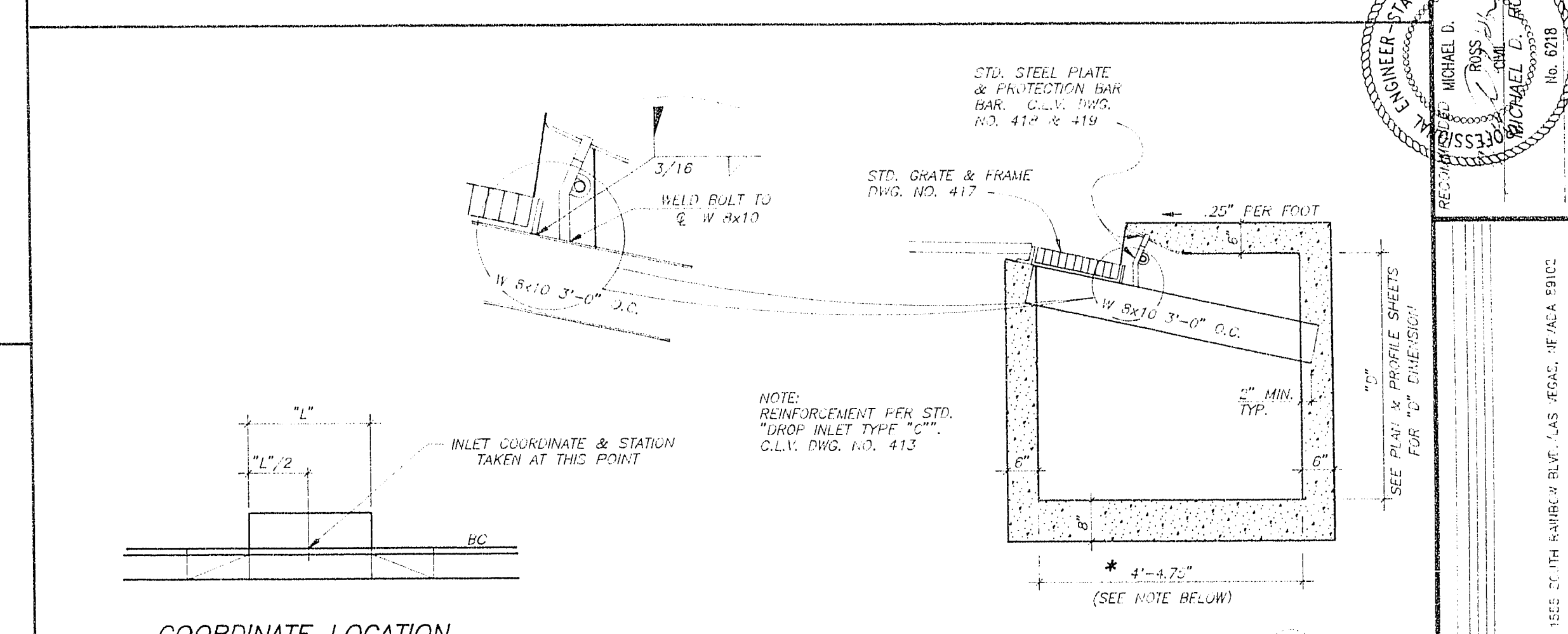
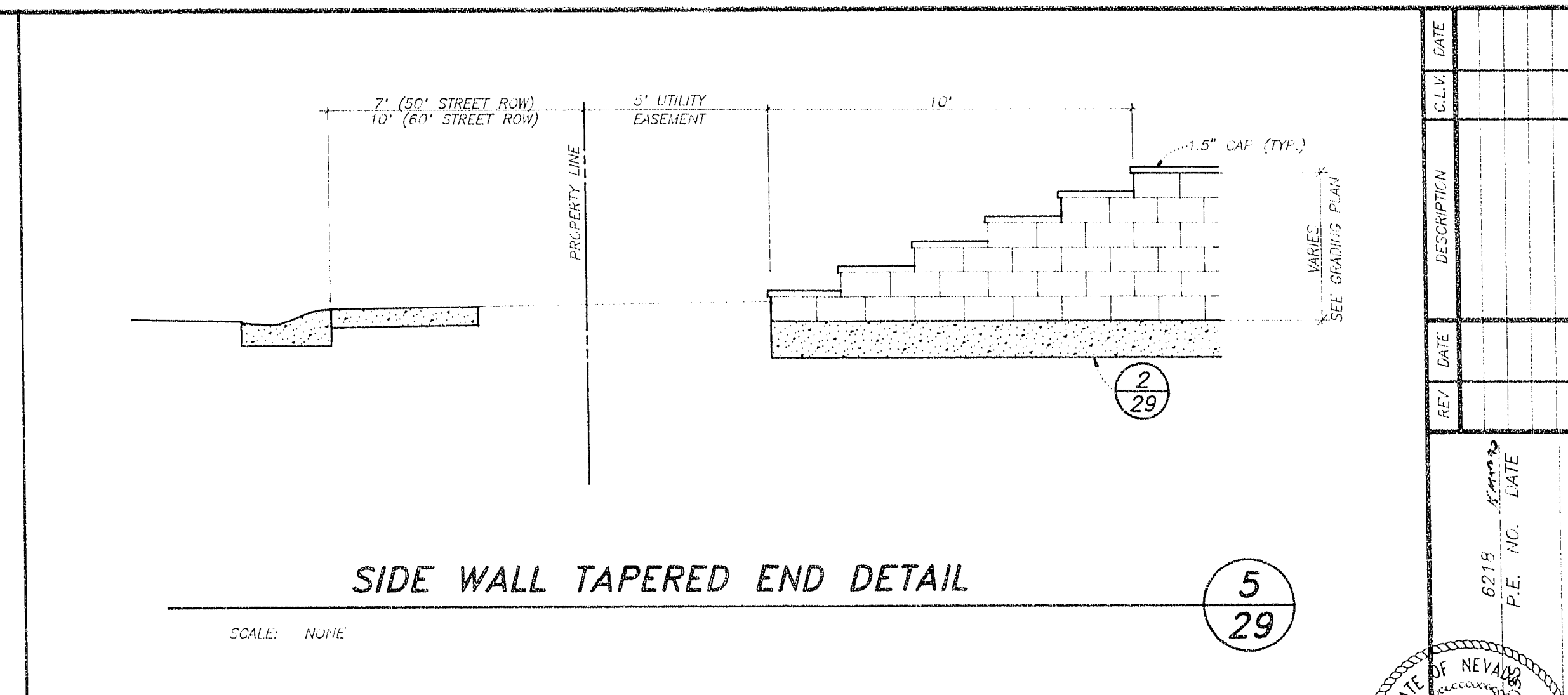


- NOTES:**
- MASONRY UNITS SHALL BE ASTM C-90, GRADE N-1 HOLLOW CONCRETE UNITS.
 - MORTAR SHALL BE ASTM C270, TYPE "M" OR "S".
 - GROUT SHALL HAVE A MINIMUM STRENGTH OF 2000 PSI AT 28 DAYS USING TYPE V CEMENT PER ASTM C-150.
 - CONCRETE SHALL HAVE A MINIMUM STRENGTH OF 2500 PSI AT 28 DAYS USING TYPE V CEMENT PER ASTM C-150.
 - REINFORCING STEEL SHALL CONFORM TO ASTM A-615, GRADE 60.
 - UNLESS OTHERWISE NOTED, ALL MATERIALS SHALL CONFORM TO THE UNIFORM BUILDING CODE, LATEST EDITION, AND PER STANDARD SPECIFICATIONS FOR THE CITY OF LAS VEGAS, NEVADA.
 - SOLID GROUT ALL MASONRY UNITS THAT ARE BELOW THE HIGHEST FINISH GRADE AT THE WALL.
 - ALL WALLS ARE SUBJECT TO APPROVAL BY THE CITY OF LAS VEGAS, NEVADA BUILDING DEPARTMENT.
 - WALLS SHALL BE STEPPED ONLY AS SHOWN ON THE PLANS.
 - ALL CORNERS OR ANGLES SHALL BE TIED TOGETHER WITH REINFORCING STEEL AND GROUTED SOLID.
 - HORIZONTAL JOINT REINFORCING SHALL BE 9-GA. LADDER TYPE WITH LAP SPLICES OF 12" MINIMUM.
 - BOND BEAMS AND JOINT REINFORCING SHALL NOT BE CONTINUOUS THROUGH WALL CONSTRUCTION JOINTS.
 - BACKFILL BEHIND WALLS SHALL BE COMPACTED TO 90% OF STANDARD PROCTOR DENSITY.
 - WHERE VERTICAL GROUT LIFTS ARE NOT CONTINUOUS FOR THE ENTIRE HEIGHT OF THE WALL, TERMINATE LIFT 1" BELOW TOP OF TOP BLOCK TO FORM A KEY FOR FUTURE LIFTS.
 - WHERE H2 EXCEEDS 2'-6", "Y" BARS MAY BE SPLICED TO SEPARATE FOOTING DOWELS USING A 48 BAR DIAMETER LAP SPLICE.
 - WHERE H3 EXCEEDS 3'-5", "S" BARS MAY BE SPLICED TO SEPARATE FOOTING DOWELS USING A 48 BAR DIAMETER LAP SPLICE.
 - LOCATE KEYED JOINT IN RETAINING WALL AT 24'-0" MAXIMUM
 - SPECIAL INSPECTION PER UBC SECTION 308 SHALL BE PROVIDED.
 - IF ACTUAL HEIGHT OF WALL IS NOT LISTED IN TABLE BELOW, USE STEEL AND DIMENSIONS FOR NEXT HIGHEST WALL LISTED.

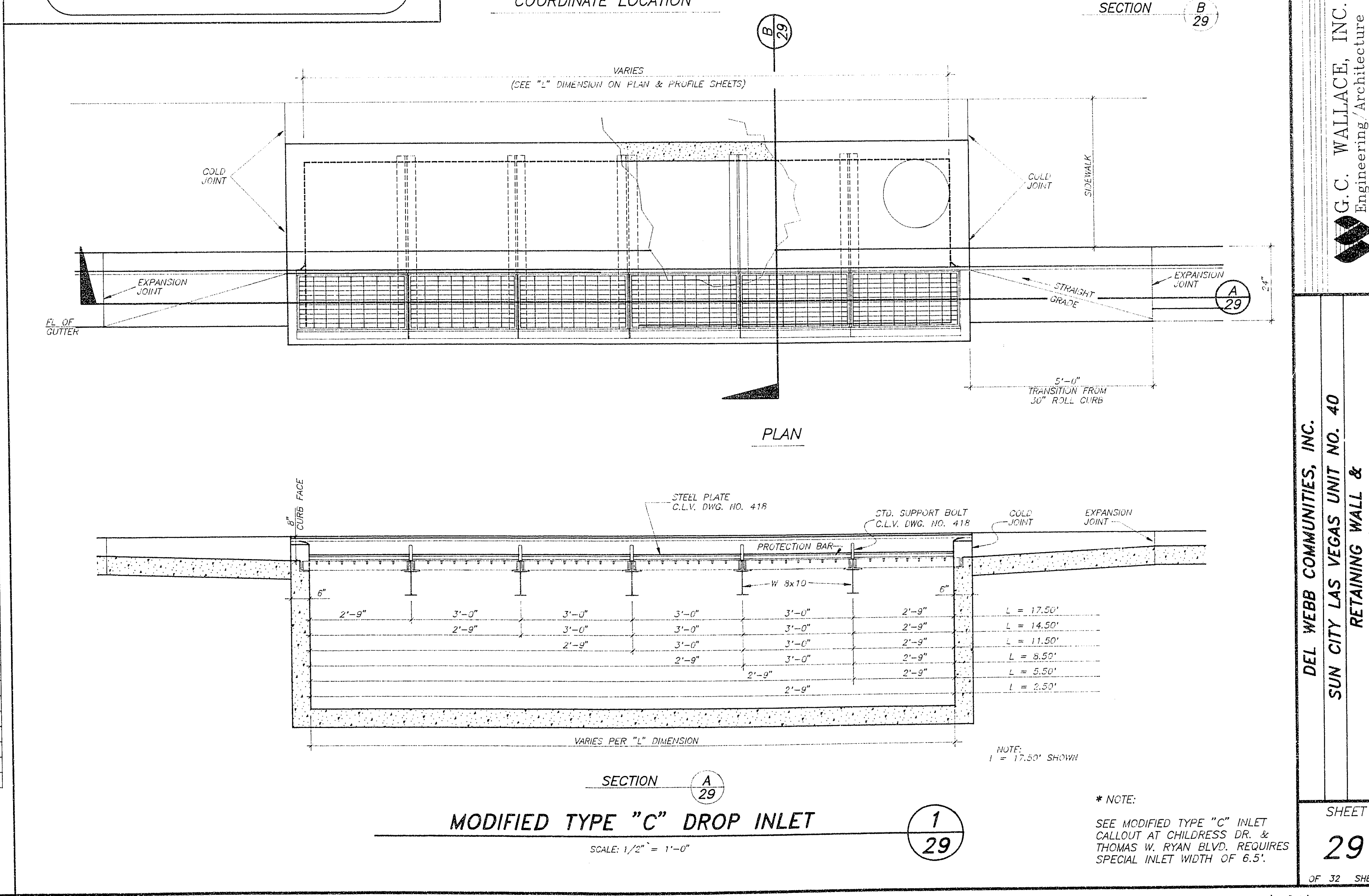
SPECIAL INSPECTION IS REQUIRED FOR WALLS OVER 5' ONLY

DIMENSIONS							"S"	"X"	"Y"	"Z"
H	H1	H2	H3	W	T	L	BARS	BARS	BARS	BARS
2'-0"	H	-	-	2'-0"	1'-0"	9"	-	#4 @ 48"	#4 @ 48"	#4 @ 24"
3'-6"	H	-	-	2'-7"	1'-0"	9"	-	#4 @ 48"	#4 @ 48"	#4 @ 24"
4'-6"	H	-	-	2'-10"	1'-0"	9"	-	#4 @ 24"	#4 @ 24"	#4 @ 24"
5'-0"	H	-	-	3'-4"	1'-0"	9"	-	#5 @ 24"	#5 @ 24"	#4 @ 16"
5'-6"	H	-	-	3'-6"	1'-0"	9"	-	#5 @ 24"	#5 @ 24"	#4 @ 16"
6'-0"	H	-	-	3'-8"	1'-0"	9"	-	#5 @ 24"	#5 @ 24"	#4 @ 16"
6'-6"	H	-	-	3'-10"	1'-0"	9"	-	#5 @ 16"	#5 @ 16"	#4 @ 16"
7'-0"	5'-0"	2'-0"	-	4'-2"	1'-0"	9"	-	#4 @ 16"	#4 @ 16"	#4 @ 16"
7'-6"	5'-6"	2'-0"	-	4'-6"	1'-0"	9"	-	#4 @ 16"	#4 @ 16"	#4 @ 16"
8'-0"	6'-0"	2'-0"	-	4'-8"	1'-0"	9"	-	#5 @ 16"	#5 @ 16"	#5 @ 16"
8'-6"	6'-6"	3'-0"	-	5'-6"	1'-3"	9"	-	#5 @ 16"	#5 @ 16"	#5 @ 16"
9'-0"	6'-6"	3'-6"	-	5'-10"	1'-3"	9"	-	#5 @ 16"	#5 @ 16"	#5 @ 16"
10'-0"	6'-6"	3'-6"	-	5'-10"	1'-3"	9"	#5 @ 32"	#5 @ 16"	#5 @ 16"	#5 @ 16"
10'-6"	6'-6"	3'-6"	2'-6"	6'-0"	1'-3"	9"	#5 @ 16"	#5 @ 16"	#5 @ 16"	#5 @ 16"
11'-0"	6'-6"	3'-6"	2'-6"	6'-2"	1'-3"	11'-3"	#5 @ 16"	#5 @ 16"	#5 @ 16"	#5 @ 16"
12'-0"	6'-6"	3'-0"	2'-6"	6'-9"	1'-3"	11'-3"	#5 @ 16"	#5 @ 16"	#5 @ 16"	#5 @ 16"
13'-0"	6'-6"	3'-6"	3'-0"	7'-3"	1'-3"	11'-3"	#5 @ 16"	#5 @ 16"	#5 @ 16"	#5 @ 8"
14'-0"	6'-6"	3'-6"	4'-0"	8'-1"	1'-3"	11'-3"	#5 @ 16"	#5 @ 16"	#5 @ 16"	#5 @ 8"
15'-0"	6'-6"	3'-6"	5'-0"	9'-0"	1'-6"	11'-3"	#7 @ 16"	#5 @ 16"	#5 @ 16"	#5 @ 8"



WALL NOTES:

- APPROVAL OF THESE PLANS BY THE CITY ENGINEER DOES NOT PERTAIN TO CONSTRUCTION OF NEW WALLS (RETAINING OR NON-RETAINING) OR MODIFICATIONS TO EXISTING WALLS.
- ALL WALLS, NEW OR EXISTING, ARE REVIEWED BY THE CITY ENGINEER FOR GRADING RELATIONSHIPS ONLY.
- ALL WALLS, RETAINING AND NON-RETAINING, MUST BE APPROVED AND A PERMIT OBTAINED FROM THE DEPARTMENT OF BUILDING AND SAFETY.



JOB NO. 701.170

REVISIONS

NO.	DATE	DESCRIPTION

DEL WEBB COMMUNITIES, INC.
SUN CITY LAS VEGAS UNIT NO. 40
RETAINING WALL & INLET DETAILS

G. C. WALLACE, INC.
Engineering/Architecture

DEL WEBB COMMUNITIES, INC.
SUN CITY LAS VEGAS UNIT NO. 40
RETAINING WALL & INLET DETAILS
MODIFIED TYPE "C" INLET DETAILS

SHEET 29 OF 32 SHEETS

10-9-29 1074-4141-40