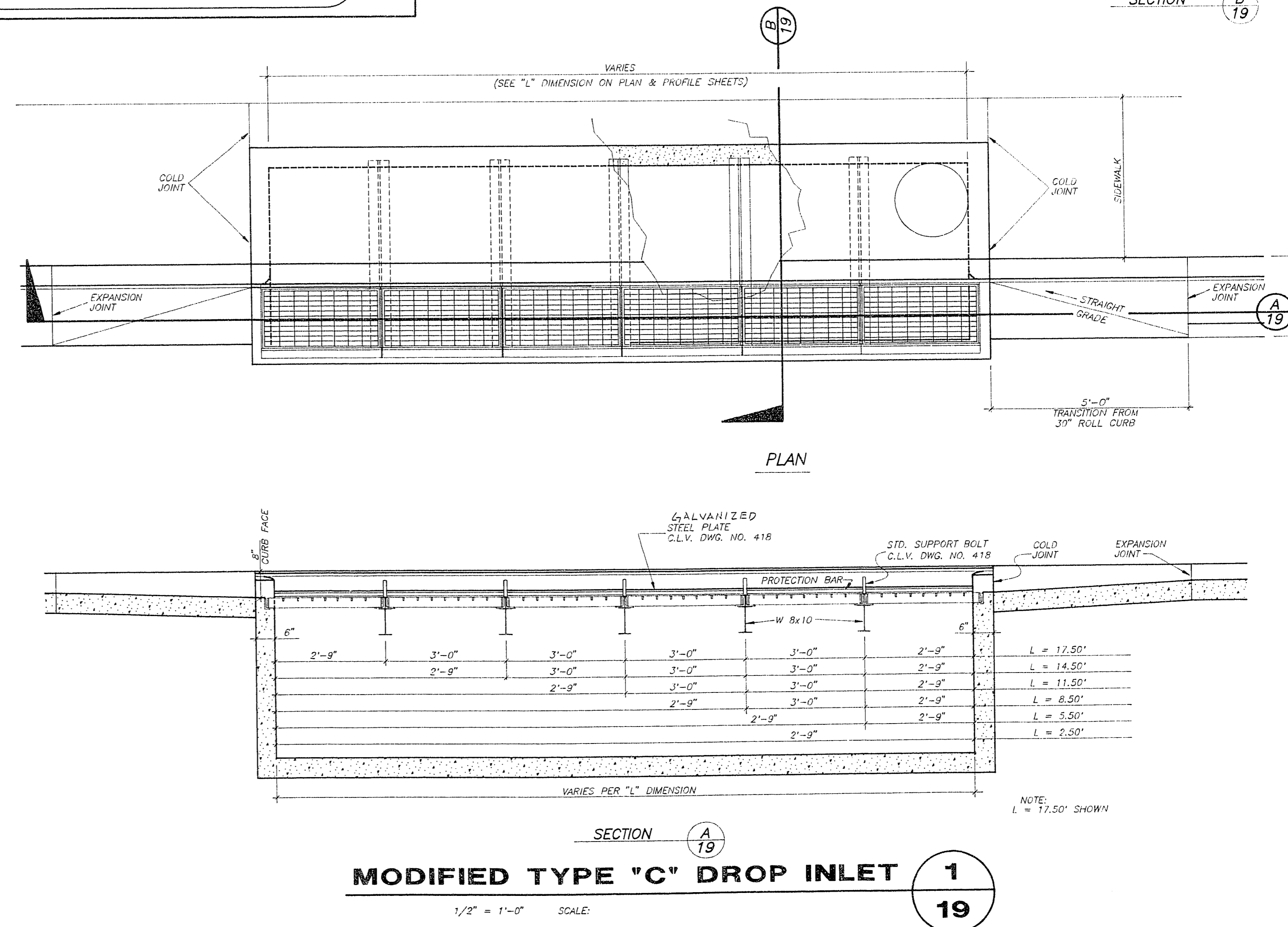


- NOTES:**
- MASONRY UNITS SHALL BE ASTM C-90, GRADE N-1 HOLLOW CONCRETE UNITS.
  - MORTAR SHALL BE ASTM C270, TYPE "M" OR "S".
  - GROUT SHALL HAVE A MINIMUM STRENGTH OF 2000 PSI AT 28 DAYS USING TYPE V CEMENT PER ASTM C-150.
  - CONCRETE SHALL HAVE A MINIMUM STRENGTH OF 2500 PSI AT 28 DAYS USING TYPE V CEMENT PER ASTM C-150.
  - REINFORCING STEEL SHALL CONFORM TO ASTM A-615, GRADE 60.
  - UNLESS OTHERWISE NOTED, ALL MATERIALS SHALL CONFORM TO THE UNIFORM BUILDING CODE, LATEST EDITION, AND PER STANDARD SPECIFICATIONS FOR THE CITY OF LAS VEGAS, NEVADA.
  - SOLID GROUT ALL MASONRY UNITS THAT ARE BELOW THE HIGHEST FINISH GRADE AT THE WALL.
  - ALL WALLS ARE SUBJECT TO APPROVAL BY THE CITY OF LAS VEGAS, NEVADA BUILDING DEPARTMENT.
  - WALLS SHALL BE STEPPED ONLY AS SHOWN ON THE PLANS.
  - ALL CORNERS OR ANGLES SHALL BE TIED TOGETHER WITH REINFORCING STEEL AND GROUTED SOLID.
  - HORIZONTAL JOINT REINFORCING SHALL BE 9-GA. LADDER TYPE WITH LAP SPLICES OF 12" MINIMUM.
  - BOND BEAMS AND JOINT REINFORCING SHALL NOT BE CONTINUOUS THROUGH WALL CONSTRUCTION JOINTS.
  - BACKFILL BEHIND WALLS SHALL BE COMPACTED TO 90% OF STANDARD PROCTOR DENSITY.
  - WHERE VERTICAL GROUT LIFTS ARE NOT CONTINUOUS FOR THE ENTIRE HEIGHT OF THE WALL, TERMINATE LIFT 1" BELOW TOP OF TOP BLOCK TO FORM A KEY FOR FUTURE LIFTS.
  - WHERE H2 EXCEEDS 2'-6", "Y" BARS MAY BE SPLICED TO SEPARATE FOOTING DOWELS USING A 48 BAR DIAMETER LAP SPLICE.
  - WHERE H3 EXCEEDS 3'-6", "S" BARS MAY BE SPLICED TO SEPARATE FOOTING DOWELS USING A 48 BAR DIAMETER LAP SPLICE.
  - LOCATE KEYPED JOINT IN RETAINING WALL AT 24'-0" MAXIMUM.
  - SPECIAL INSPECTION PER UBC SECTION 308 SHALL BE PROVIDED.
  - IF ACTUAL HEIGHT OF WALL IS NOT LISTED IN TABLE BELOW, USE STEEL AND DIMENSIONS FOR NEXT HIGHEST WALL LISTED.

- WALL NOTES:**
- APPROVAL OF THESE PLANS BY THE CITY ENGINEER DOES NOT PERTAIN TO CONSTRUCTION OF NEW WALLS (RETAINING OR NON-RETAINING) OR MODIFICATIONS TO EXISTING WALLS.
  - ALL WALLS, NEW OR EXISTING, ARE REVIEWED BY THE CITY ENGINEER FOR GRADING RELATIONSHIPS ONLY.
  - ALL WALLS, RETAINING AND NON-RETAINING, MUST BE APPROVED AND A PERMIT OBTAINED FROM THE DEPARTMENT OF BUILDING AND SAFETY.

**SPECIAL INSPECTION IS REQUIRED ON WALLS OVER 5' ONLY**

DIMENSIONS							'S'	'X'	'Y'	'Z'
H	H1	H2	H3	W	T	L	BAR	BAR	BAR	BAR
2'-0"	H	-	-	2'-0"	1'-0"	9"	#4 @ 48"	#4 @ 48"	#4 @ 24"	#4 @ 24"
3'-6"	H	-	-	2'-7"	1'-0"	9"	#4 @ 48"	#4 @ 48"	#4 @ 24"	#4 @ 24"
4'-6"	H	-	-	2'-10"	1'-0"	9"	#4 @ 24"	#4 @ 24"	#4 @ 24"	#4 @ 24"
5'-0"	H	-	-	3'-4"	1'-0"	9"	#5 @ 24"	#5 @ 24"	#4 @ 16"	#4 @ 16"
5'-6"	H	-	-	3'-6"	1'-0"	9"	#5 @ 24"	#5 @ 24"	#4 @ 16"	#4 @ 16"
6'-0"	H	-	-	3'-8"	1'-0"	9"	#5 @ 24"	#5 @ 24"	#4 @ 16"	#4 @ 16"
6'-6"	H	-	-	3'-10"	1'-0"	9"	#5 @ 16"	#5 @ 16"	#4 @ 16"	#4 @ 16"
7'-0"	5'-0"	2'-0"	-	4'-2"	1'-0"	9"	#4 @ 16"	#4 @ 16"	#4 @ 16"	#4 @ 16"
7'-6"	5'-6"	2'-0"	-	4'-8"	1'-0"	9"	#4 @ 16"	#4 @ 16"	#4 @ 16"	#4 @ 16"
8'-0"	6'-0"	2'-0"	-	4'-8"	1'-0"	9"	#5 @ 16"	#5 @ 16"	#5 @ 16"	#5 @ 16"
9'-6"	6'-6"	3'-0"	-	5'-8"	1'-3"	9"	#5 @ 16"	#6 @ 16"	#5 @ 16"	#5 @ 16"
10'-0"	6'-6"	3'-6"	-	5'-10"	1'-3"	9"	#5 @ 16"	#6 @ 16"	#5 @ 16"	#5 @ 16"
10'-6"	6'-6"	1'-0"	2'-6"	6'-0"	1'-3"	9"	#5 @ 32"	#5 @ 16"	#5 @ 16"	#5 @ 16"
11'-0"	6'-6"	2'-0"	2'-6"	6'-2"	1'-3"	9"	#5 @ 16"	#5 @ 16"	#5 @ 16"	#6 @ 16"
12'-0"	6'-6"	3'-0"	2'-6"	6'-9"	1'-3"	9"	#5 @ 16"	#5 @ 16"	#6 @ 16"	#6 @ 16"
13'-0"	6'-6"	3'-6"	3'-0"	7'-3"	1'-3"	9"	#6 @ 16"	#5 @ 16"	#6 @ 16"	#6 @ 8"
14'-0"	6'-6"	3'-6"	4'-0"	8'-1"	1'-3"	9"	#6 @ 16"	#5 @ 16"	#6 @ 16"	#6 @ 8"
15'-0"	6'-6"	3'-6"	5'-0"	9'-0"	1'-6"	1'-3"	#7 @ 16"	#5 @ 16"	#6 @ 16"	#6 @ 8"



DATE: \_\_\_\_\_  
 DESCRIPTION: \_\_\_\_\_  
 REV: \_\_\_\_\_  
 DATE: \_\_\_\_\_  
 F.L.E. NO. DATE: \_\_\_\_\_  
 MICHAEL D. ROSS, P.E.  
 ENGINEER - STATE OF NEVADA  
 LICENSE NO. 6218  
 G. C. WALLACE, INC.  
 Engineering/Architecture  
 1555 20TH AVENUE, SUITE 100, LAS VEGAS, NEVADA 89102  
 DEL WEBB COMMUNITIES, INC.  
 SUN CITY LAS VEGAS UNIT NO. 39  
 RETAINING WALL & MODIFIED TYPE "C" INLET DETAILS  
 SHEET 19 OF 22 SHEETS

JOB NO. 701.168

10-9-60 1074-4141-39