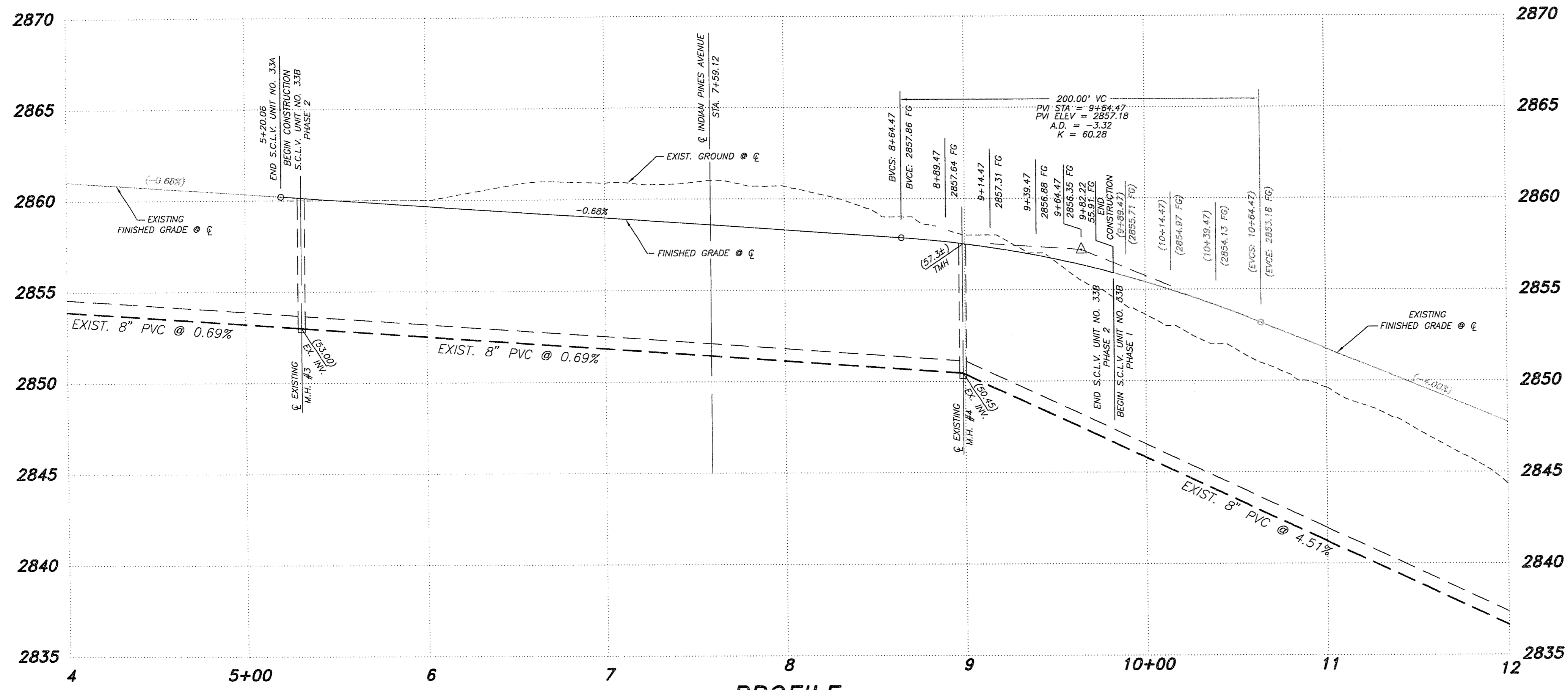
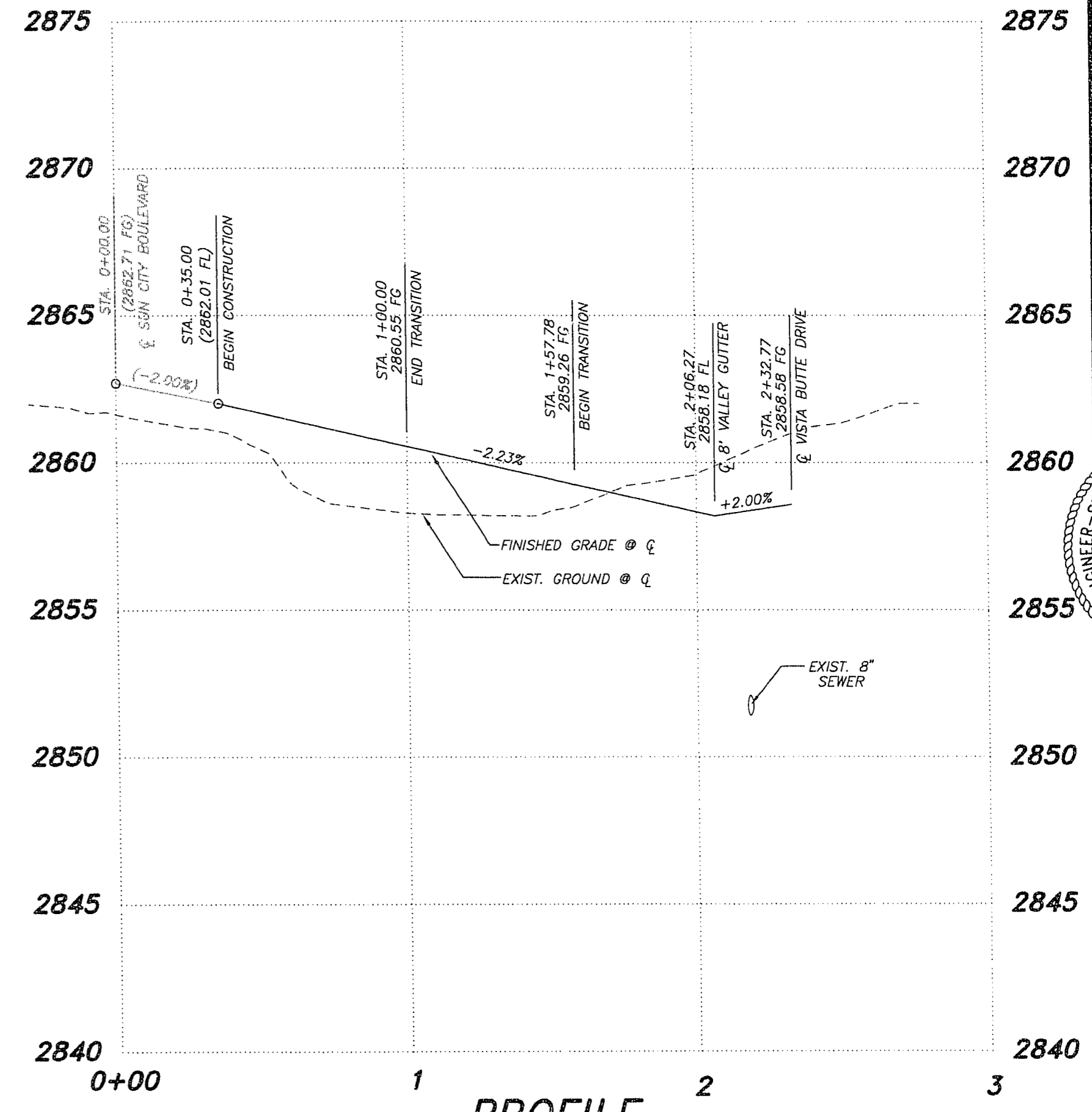


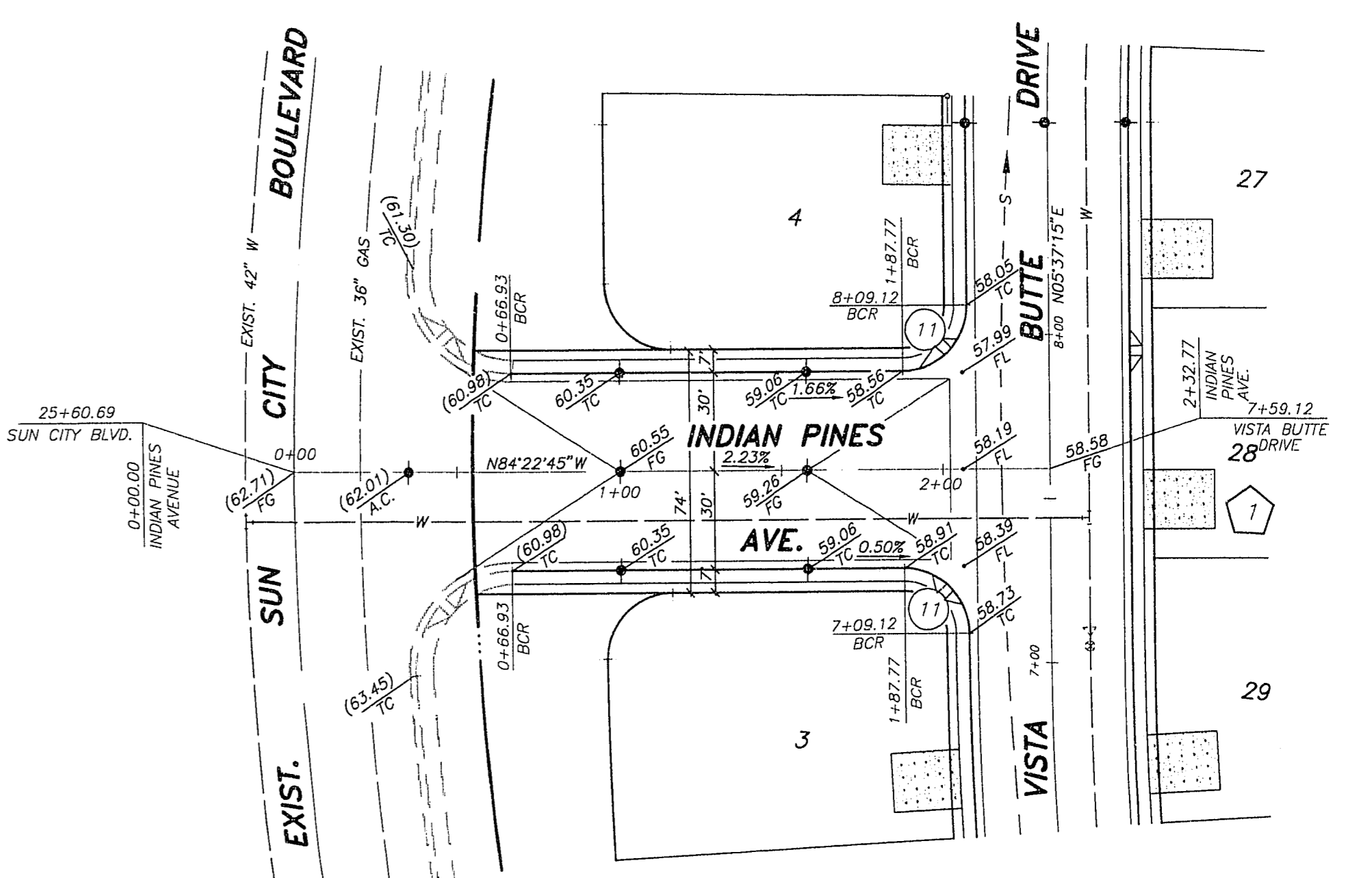
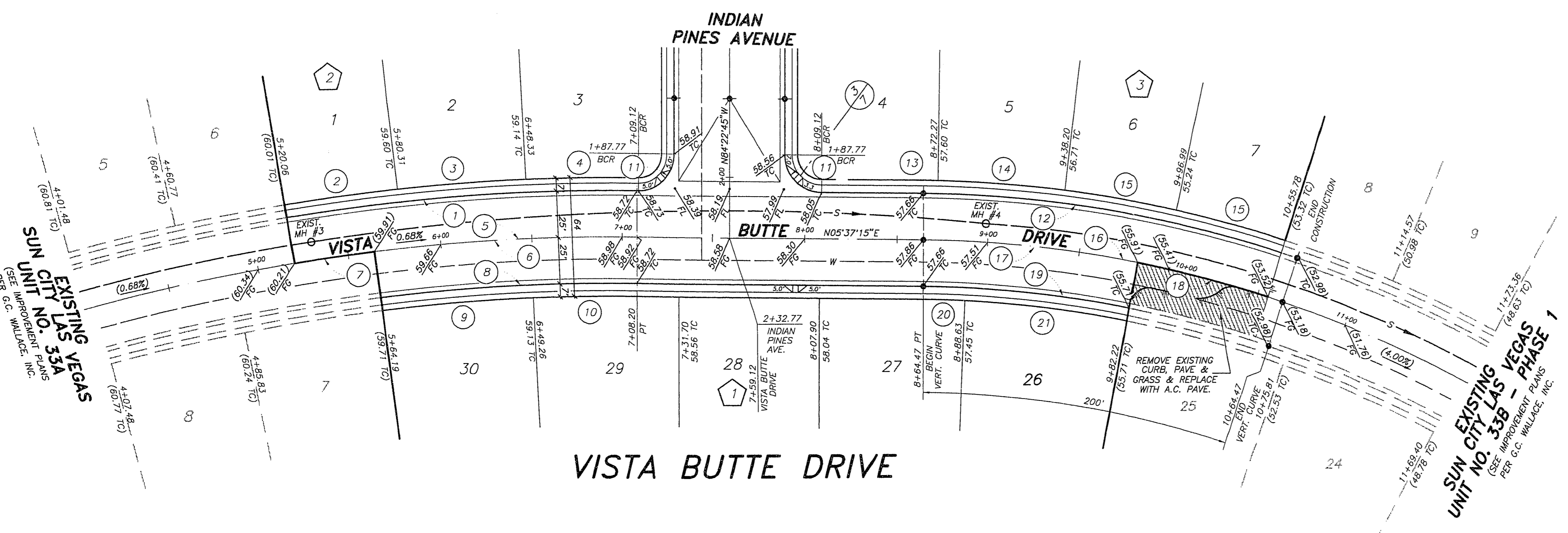
JOB NO. 701.235 PLOTTED: 10/13/95 3:56 pm DRAWING: C:\DRAWINGS\DELWEBB\UNIT33B-352-315 BR. D.L.L.



PROFILE
SCALE: HORIZ. 1" = 40'
VERT. 1" = 4'

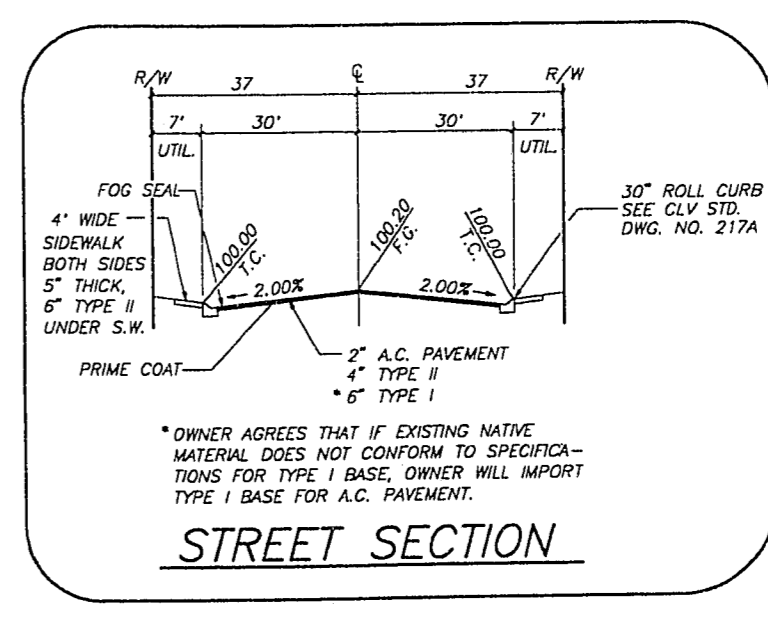
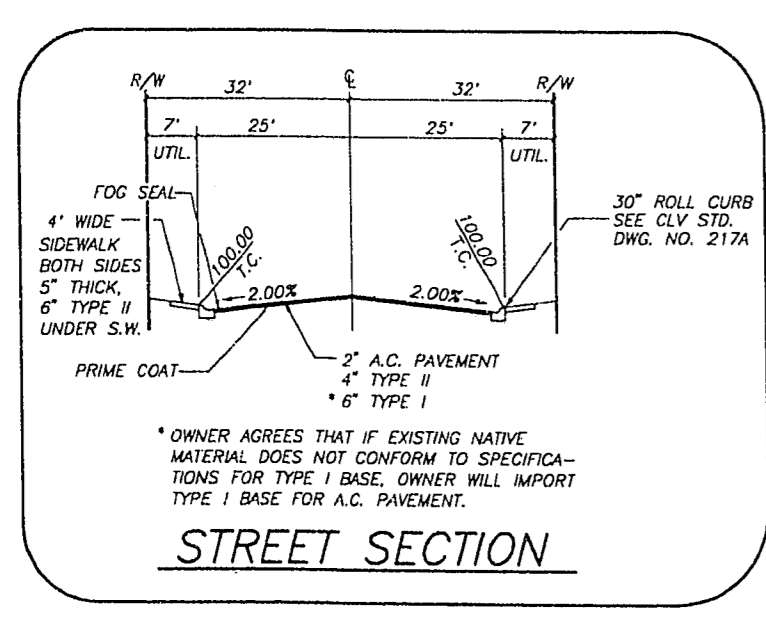
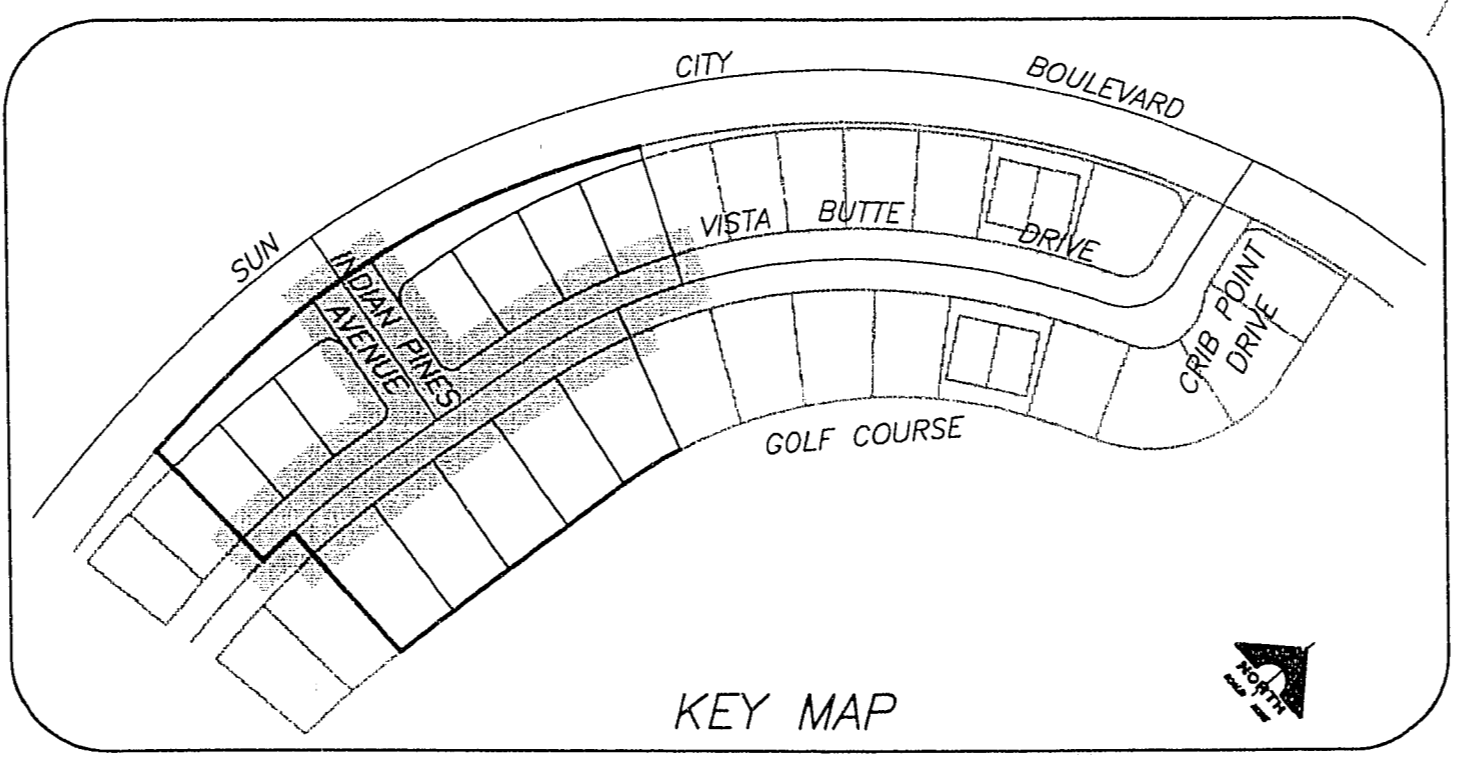


PROFILE
SCALE: HORIZ. 1" = 40'
VERT. 1" = 4'



BCR CURVE TABLE

CURVE	DELTA	RADIUS	LENGTH	TANGENT
1	09°47'58"	1125.00'	192.41'	96.44'
2	03°08'17"	1125.00'	61.62'	30.82'
3	03°33'35"	1125.00'	69.57'	34.79'
4	03°07'06"	1125.00'	61.23'	30.62'
5	09°47'58"	1100.00'	188.14'	94.30'
6	07°30'04"	1100.00'	144.01'	72.11'
7	02°17'54"	1100.00'	44.19'	22.09'
8	04°25'04"	1075.00'	140.74'	70.47'
9	04°25'04"	1075.00'	83.14'	41.59'
10	03°04'11"	1075.00'	37.69'	18.80'
11	02°02'00"	20.00'	31.42'	20.00'
12	17°32'15"	650.00'	198.96'	100.26'
13	00°42'54"	650.00'	8.11'	4.06'
14	08°02'17"	650.00'	88.58'	44.31'
15	05°23'22"	650.00'	61.14'	30.59'
16	17°32'15"	625.00'	191.30'	96.41'
17	10°47'39"	625.00'	117.75'	59.05'
18	06°44'36"	625.00'	73.56'	36.82'
19	10°47'39"	600.00'	113.04'	56.89'
20	02°12'51"	600.00'	23.19'	11.59'
21	08°34'48"	600.00'	89.85'	45.01'



DATE	DESCRIPTION	BY	DATE
10/14/95	REVISED	SONNY W.	

RECOMMENDED
SONNY W. CIVIL ENGINEER
1555 SOUTH RAINBOW BLVD/LAS VEGAS, NEVADA 89102

G. C. WALLACE, INC.
Engineering/Architecture

DEL WEBB COMMUNITIES, INC.
SUN CITY LAS VEGAS UNIT 33B - PHASE 2
PLAN & PROFILE 1
VISTA BUTTE DRIVE & INDIAN PINES AVENUE

SHEET
5
OF 8 SHEETS

10-2-75 107Y-4/41-33B-2