

MONUMENT TIE MAP

FINAL MAP OF

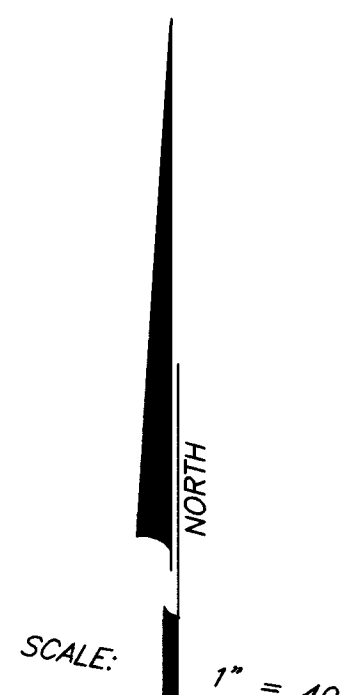
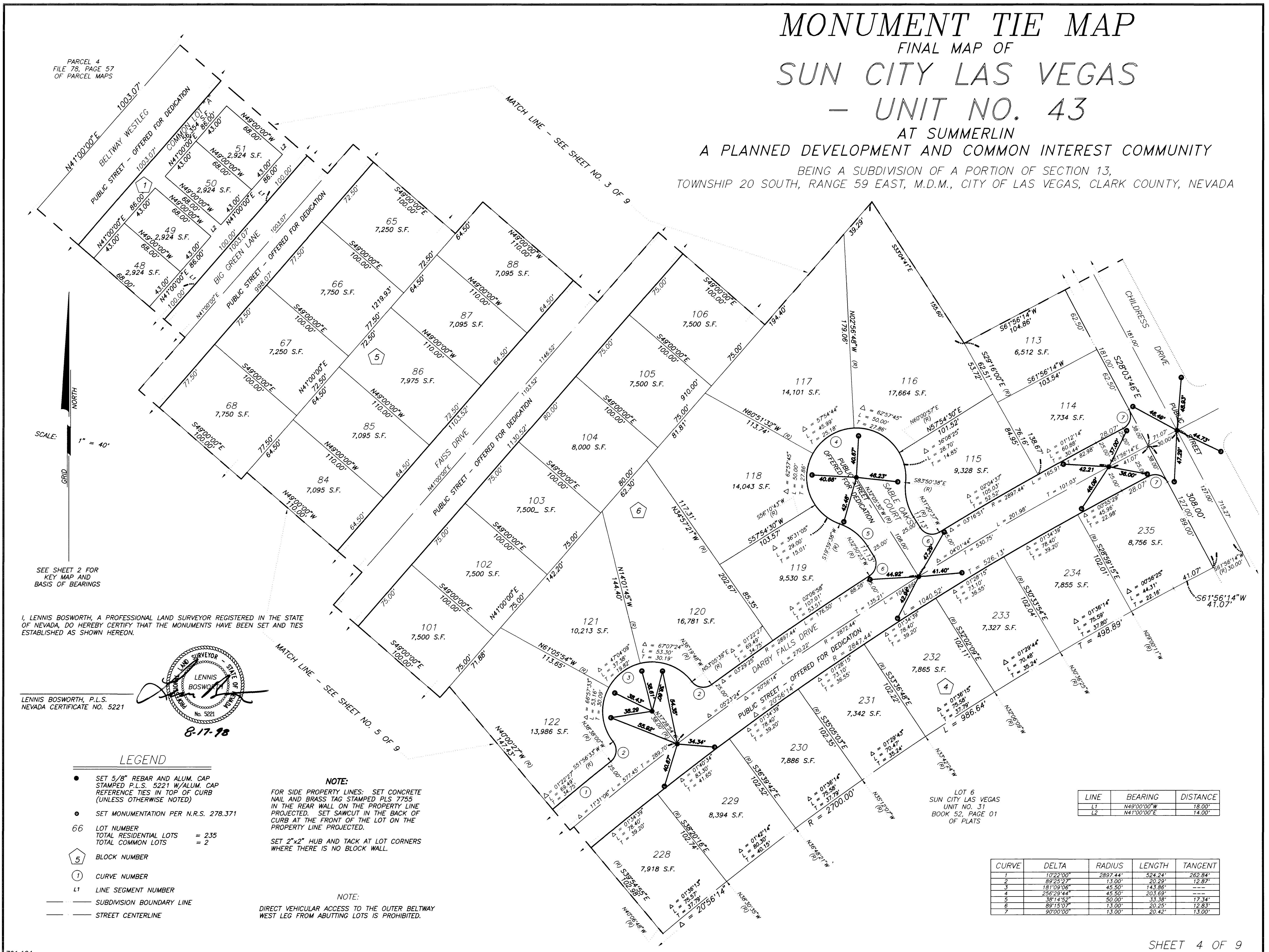
SUN CITY LAS VEGAS

- UNIT NO. 43

AT SUMMERLIN
A PLANNED DEVELOPMENT AND COMMON INTEREST COMMUNITY

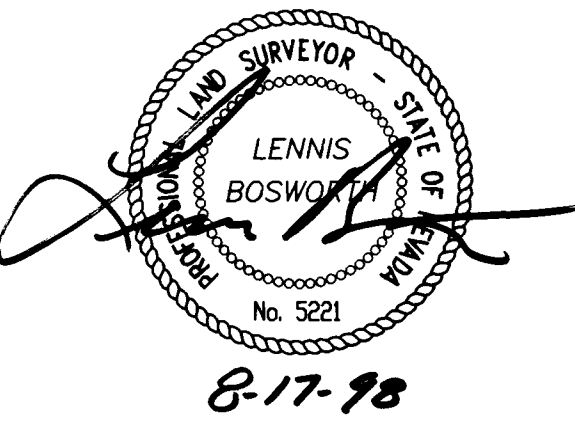
BEING A SUBDIVISION OF A PORTION OF SECTION 13,
TOWNSHIP 20 SOUTH, RANGE 59 EAST, M.D.M., CITY OF LAS VEGAS, CLARK COUNTY, NEVADA

PARCEL 4
FILE 78, PAGE 57
OF PARCEL MAPS



SEE SHEET 2 FOR
KEY MAP AND
BASIS OF BEARINGS

I, LENNIS BOSWORTH, A PROFESSIONAL LAND SURVEYOR REGISTERED IN THE STATE OF NEVADA, DO HEREBY CERTIFY THAT THE MONUMENTS HAVE BEEN SET AND TIES ESTABLISHED AS SHOWN HEREON.



LENNIS BOSWORTH, P.L.S.
NEVADA CERTIFICATE NO. 5221

- LEGEND**
- SET 5/8" REBAR AND ALUM. CAP STAMPED P.L.S. 5221 W/ALUM. CAP REFERENCE TIES IN TOP OF CURB (UNLESS OTHERWISE NOTED)
 - SET MONUMENTATION PER N.R.S. 278.371
 - 66 LOT NUMBER
TOTAL RESIDENTIAL LOTS = 235
TOTAL COMMON LOTS = 2
 - 5 BLOCK NUMBER
 - 1 CURVE NUMBER
 - L1 LINE SEGMENT NUMBER
 - SUBDIVISION BOUNDARY LINE
 - STREET CENTERLINE

NOTE:
FOR SIDE PROPERTY LINES: SET CONCRETE NAIL AND BRASS TAG STAMPED PLS 7755 IN THE REAR WALL ON THE PROPERTY LINE PROJECTED. SET SAWCUT IN THE BACK OF CURB AT THE FRONT OF THE LOT ON THE PROPERTY LINE PROJECTED.

SET 2"x2" HUB AND TACK AT LOT CORNERS WHERE THERE IS NO BLOCK WALL.

NOTE:
DIRECT VEHICULAR ACCESS TO THE OUTER BELTWAY WEST LEG FROM ABUTTING LOTS IS PROHIBITED.

LINE	BEARING	DISTANCE
L1	N49°00'00"W	18.00'
L2	N41°00'00"E	14.00'

CURVE	DELTA	RADIUS	LENGTH	TANGENT
1	10°22'00"	2897.44'	524.24'	262.84'
2	89°25'27"	13.00'	20.29'	12.87'
3	181°09'06"	45.50'	143.86'	---
4	256°29'44"	45.50'	203.69'	---
5	38°14'52"	50.00'	33.38'	17.34'
6	89°15'07"	13.00'	20.25'	12.83'
7	90°00'00"	13.00'	20.42'	13.00'

PLOTTED: 03/24/94 6:00 AM DRAWING: DWG-1-4 BY: DRK

