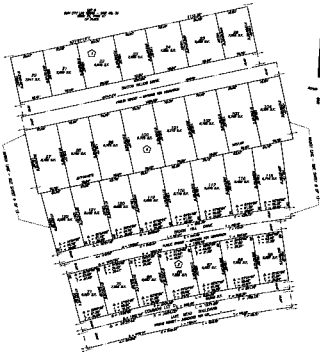




# MONUMENT TIE MAP

## FINAL MAP OF SUN CITY LAS VEGAS - UNIT NO. 42

AT SUMMERLIN  
A PLANNED DEVELOPMENT AND  
COMMON INTEREST COMMUNITY  
BEING A SUBDIVISION OF A PORTION OF SECTION 13  
TOWNSHIP 30 SOUTH, RANGE 59 EAST, 11 D.M.,  
CITY OF LAS VEGAS, CLARK COUNTY, NEVADA



11/17/42

### LEGEND

- 1/2" = 1' SCALE
- 1" = 1' SCALE
- 1" = 1' SCALE
- 1" = 1' SCALE

THIS MAP IS A REPRODUCTION OF THE ORIGINAL MAP ON FILE IN THE OFFICE OF THE CLERK OF THE DISTRICT COURT, CLARK COUNTY, NEVADA, AND IS NOT TO BE USED AS A BASIS FOR ANY OTHER PURPOSE.



NOTE:  
THIS MAP IS A REPRODUCTION OF THE ORIGINAL MAP ON FILE IN THE OFFICE OF THE CLERK OF THE DISTRICT COURT, CLARK COUNTY, NEVADA, AND IS NOT TO BE USED AS A BASIS FOR ANY OTHER PURPOSE.