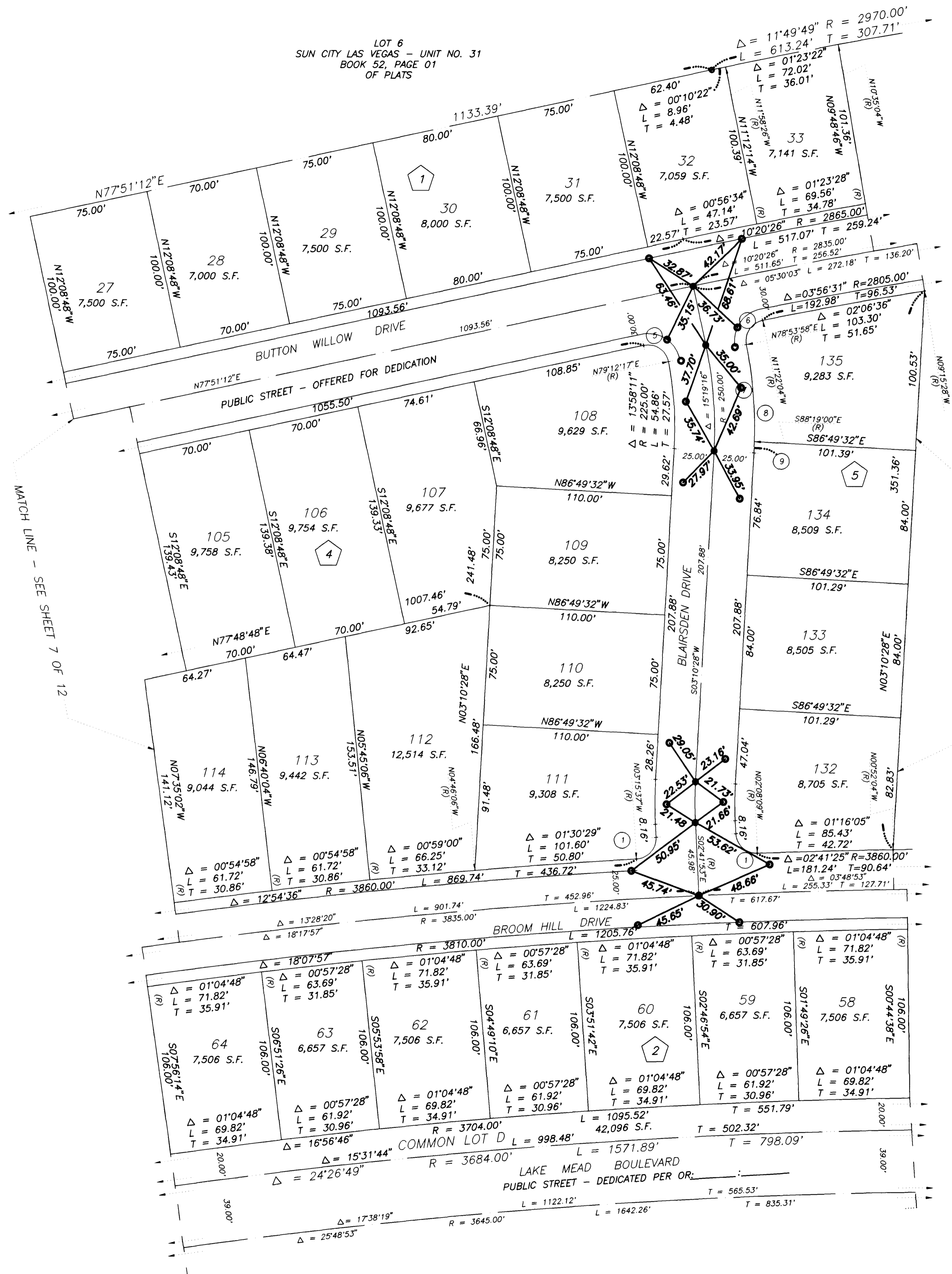


# MONUMENT TIE MAP

## FINAL MAP OF SUN CITY LAS VEGAS - UNIT NO. 42 AT SUMMERLIN A PLANNED DEVELOPMENT AND COMMON INTEREST COMMUNITY

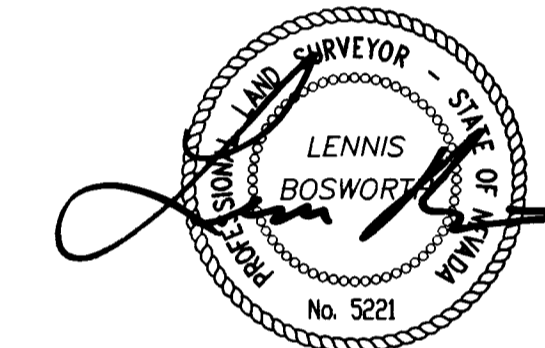
BEING A SUBDIVISION OF A PORTION OF SECTION 13  
TOWNSHIP 20 SOUTH, RANGE 59 EAST, M.D.M.,  
CITY OF LAS VEGAS, CLARK COUNTY, NEVADA



SCALE: 1" = 40'

SEE SHEET 3 FOR  
KEY MAP AND  
BASIS OF BEARINGS

I, LENNIS BOSWORTH, A PROFESSIONAL LAND SURVEYOR REGISTERED IN THE STATE OF NEVADA, DO HEREBY CERTIFY THAT THE MONUMENTS HAVE BEEN SET AND TIES ESTABLISHED AS SHOWN HEREON.



8-17-98

LENNIS BOSWORTH, P.L.S.  
NEVADA CERTIFICATE NO. 5221

### LEGEND

- SET 5/8" REBAR AND ALUM. CAP STAMPED P.L.S. 7755 W/ALUM. CAP REFERENCE TIES IN TOP OF CURB (UNLESS OTHERWISE NOTED)
- SET MONUMENTATION PER N.R.S. 278.371
- 135 LOT NUMBER  
TOTAL RESIDENTIAL LOTS = 303  
TOTAL COMMON LOTS = 10
- ⑤ BLOCK NUMBER
- ⑨ CURVE NUMBER
- SUBDIVISION BOUNDARY LINE
- STREET CENTERLINE

### NOTE:

FOR SIDE PROPERTY LINES: SET CONCRETE NAIL AND BRASS TAG STAMPED PLS 7755 IN THE REAR WALL ON THE PROPERTY LINE PROJECTED. SET SAWCUT IN THE BACK OF CURB AT THE FRONT OF THE LOT ON THE PROPERTY LINE PROJECTED.

SET 2"x2" HUB AND TACK AT LOT CORNERS WHERE THERE IS NO BLOCK WALL.

### NOTE:

DIRECT VEHICULAR ACCESS TO LAKE MEAD BOULEVARD FROM ABUTTING LOTS IS PROHIBITED.

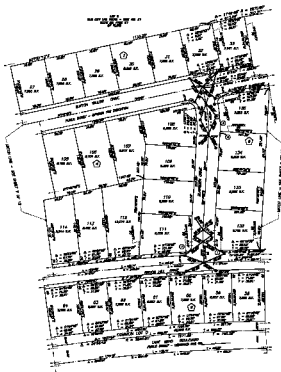
CURVE	DELTA	RADIUS	LENGTH	TANGENT
1	89°26'16"	13.00'	20.29'	12.87'
2	05°52'21"	275.00'	28.19'	14.11'
3	05°52'21"	250.00'	25.82'	12.82'
4	05°52'21"	225.00'	23.06'	11.54'
5	91°21'05"	13.00'	20.73'	13.31'
6	89°43'58"	13.00'	20.36'	12.94'
7	14°16'30"	275.00'	68.52'	34.44'
8	12°47'02"	275.00'	61.36'	30.81'
9	01°29'28"	275.00'	7.16'	3.58'

# MONUMENT TIE MAP

## FINAL MAP OF SUN CITY LAS VEGAS - UNIT NO. 42

AT SUMMERLIN  
A PLANNED DEVELOPMENT AND  
COMMON INTEREST COMMUNITY

BEING A SUBDIVISION OF A PORTION OF SECTION 13  
TOWNSHIP 20 SOUTH RANGE 20 EAST, M.D.M.  
CITY OF LAS VEGAS, CLARK COUNTY, NEVADA



- LEGEND**
- EXISTING LOT
  - LOT DEVELOPMENT FOR THIS PLAT
  - 1-6 MONUMENT TIE
  - EXISTING MONUMENT TIE
  - EXISTING MONUMENT TIE
  - SUBDIVISION BOUNDARY LINE
  - STREET BOUNDARY

PLANNED DEVELOPMENT  
SUN CITY  
LAS VEGAS, NEVADA  
REPLACES 2012 PLAT

DATE	SCALE	REVISION	APPROVED	REVISION