

# SUN CITY LAS VEGAS - UNIT NO. 41

AT SUMMERLIN

A PLANNED DEVELOPMENT AND COMMON INTEREST COMMUNITY

BEING A SUBDIVISION OF A PORTION OF PARCEL 3 AS SHOWN BY MAP THEREOF ON FILE  
IN FILE 72, PAGE 57 OF PARCEL MAPS IN THE CLARK COUNTY RECORDER'S OFFICE,  
CLARK COUNTY, NEVADA, LYING WITHIN SECTION 13, TOWNSHIP 20 SOUTH, RANGE 59 EAST,  
M.D.M., CITY OF LAS VEGAS, CLARK COUNTY, NEVADA

# MONUMENT TIE MAP

| CURVE | DELTA     | RADIUS   | LENGTH | TANGENT |
|-------|-----------|----------|--------|---------|
| 1     | 00°27'26" | 1255.00' | 10.01' | 5.01'   |
| 2     | 38°56'30" | 60.00'   | 40.78' | 21.21'  |

| LINE | BEARING     | DISTANCE |
|------|-------------|----------|
| L1   | N41°00'00"E | 10.00'   |
| L2   | N41°00'00"E | 2.32'    |

SEE SHEET 2  
FOR KEY MAP AND  
BASIS OF BEARINGS

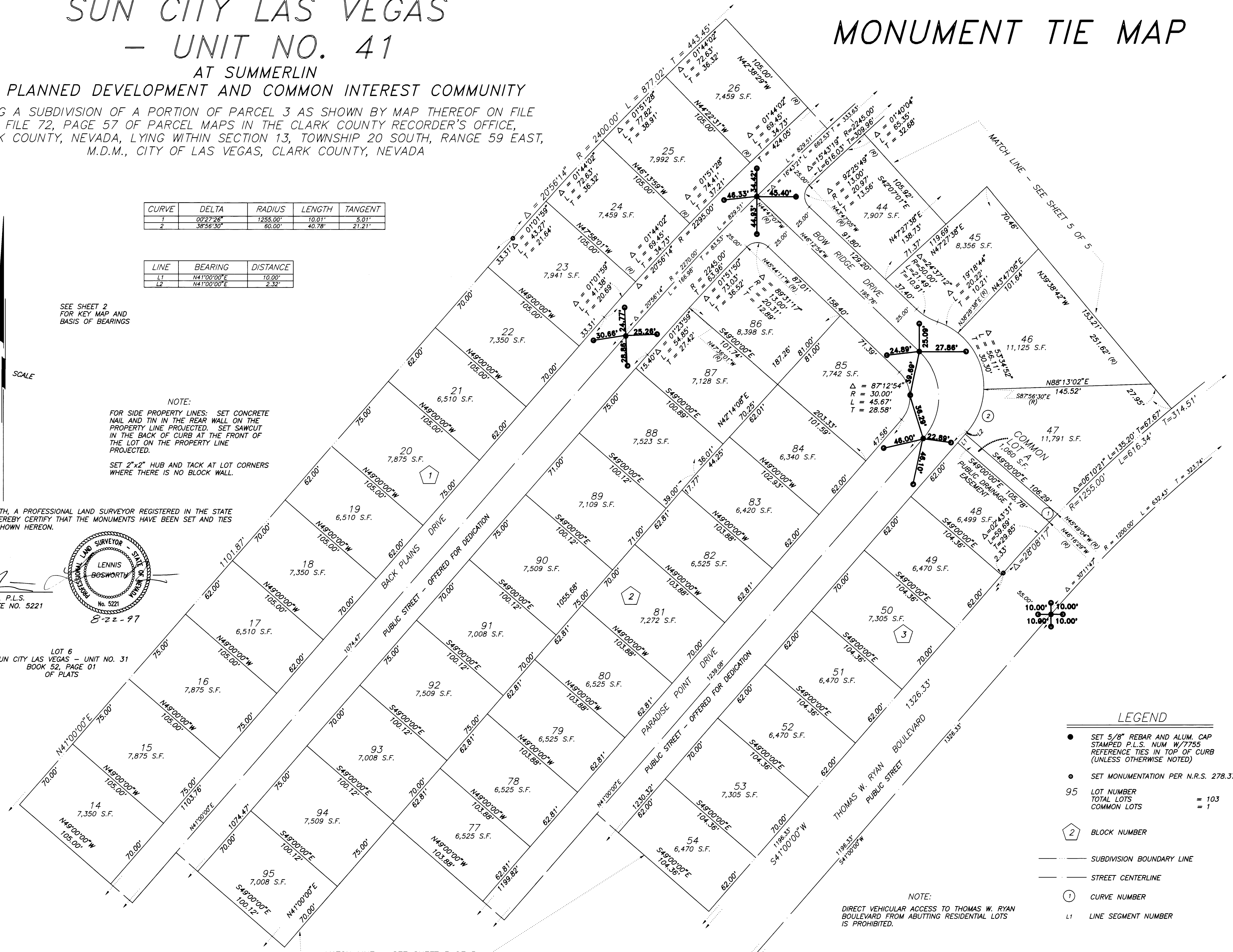
SCALE:

NOTE:  
FOR SIDE PROPERTY LINES: SET CONCRETE  
NAIL AND TIN IN THE REAR WALL ON THE  
PROPERTY LINE PROJECTED. SET SAWCUT  
IN THE BACK OF CURB AT THE FRONT OF  
THE LOT ON THE PROPERTY LINE  
PROJECTED.  
SET 2"x2" HUB AND TACK AT LOT CORNERS  
WHERE THERE IS NO BLOCK WALL.

I, LENNIS BOSWORTH, A PROFESSIONAL LAND SURVEYOR REGISTERED IN THE STATE  
OF NEVADA, DO HEREBY CERTIFY THAT THE MONUMENTS HAVE BEEN SET AND TIES  
ESTABLISHED AS SHOWN HEREON.

LENNIS BOSWORTH, P.L.S.  
NEVADA CERTIFICATE NO. 5221  
8-22-97

LOT 6  
SUN CITY LAS VEGAS - UNIT NO. 31  
BOOK 52, PAGE 01  
OF PLATS



### LEGEND

- SET 5/8" REBAR AND ALUM. CAP STAMPED P.L.S. NUM. W/7755 REFERENCE TIES IN TOP OF CURB (UNLESS OTHERWISE NOTED)
- SET MONUMENTATION PER N.R.S. 278.371
- 95 LOT NUMBER = 103  
TOTAL LOTS = 1
- ② BLOCK NUMBER
- SUBDIVISION BOUNDARY LINE
- STREET CENTERLINE
- ① CURVE NUMBER
- L1 LINE SEGMENT NUMBER

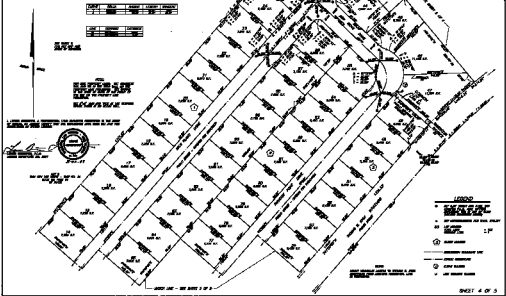
NOTE:  
DIRECT VEHICULAR ACCESS TO THOMAS W. RYAN  
BOULEVARD FROM ABUTTING RESIDENTIAL LOTS  
IS PROHIBITED.

D:\DRAWINGS\DM41\DM41-41.F1 Aug 22 09 52:05 1997 BY: SURVEYORS INC.  
PLOTED: 07/02/93 11:18 pm DRAWING: C:\41\DM41-4 BY: esp

# SUN CITY LAS VEGAS - UNIT NO. 41

## MONUMENT TIE MAP

AT SUMMERLIN  
A PLANNED DEVELOPMENT AND COMMON INTEREST COMMUNITY  
BEING A SUBDIVISION OF A PORTION OF PARCEL 3 AS SHOWN BY MAP RECORDED ON FILE  
IN FILE NO. PAGE 57 OF PARCEL MAPS OF THE CLARK COUNTY RECORDERS OFFICE,  
CLARK COUNTY, NEVADA, & TRIC BEYOND SECTION 13, TOWNSHIP 20 SOUTH, RANGE 28 EAST,  
N.M.S., CITY OF LAS VEGAS, CLARK COUNTY, NEVADA.



PLANNED DEVELOPMENT AND COMMON INTEREST COMMUNITY  
 SUBDIVISION OF A PORTION OF PARCEL 3 AS SHOWN BY MAP RECORDED ON FILE  
 IN FILE NO. PAGE 57 OF PARCEL MAPS OF THE CLARK COUNTY RECORDERS OFFICE,  
 CLARK COUNTY, NEVADA, & TRIC BEYOND SECTION 13, TOWNSHIP 20 SOUTH, RANGE 28 EAST,  
 N.M.S., CITY OF LAS VEGAS, CLARK COUNTY, NEVADA.