

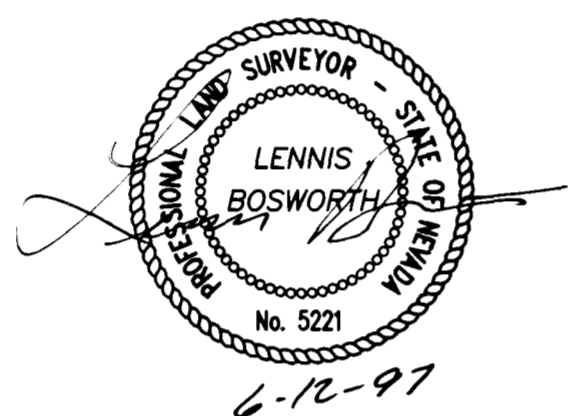
FINAL MAP OF SUN CITY LAS VEGAS UNIT NO. 40

AT SUMMERLIN
A PLANNED DEVELOPMENT AND
COMMON INTEREST COMMUNITY

BEING A SUBDIVISION OF A PORTION OF PARCEL 3 AS SHOWN BY MAP
THEREOF ON FILE IN FILE 72, PAGE 57 OF PARCEL MAPS IN THE CLARK
COUNTY RECORDER'S OFFICE, CLARK COUNTY, NEVADA, LYING WITHIN
SECTION 13, TOWNSHIP 20 SOUTH, RANGE 59 EAST, M.D.M.,
CITY OF LAS VEGAS, CLARK COUNTY, NEVADA

I, LENNIS BOSWORTH, A PROFESSIONAL LAND SURVEYOR REGISTERED IN THE STATE
OF NEVADA, DO HEREBY CERTIFY THAT THE MONUMENTS HAVE BEEN SET AND TIES
ESTABLISHED AS SHOWN HEREON.

Lennis Bosworth
LENNIS BOSWORTH, P.L.S.
NEVADA CERTIFICATE NO. 5221



MONUMENT TIE MAP

SEE SHEET 2 FOR
KEY MAP AND
BASIS OF BEARING

SCALE: 1" = 40'

NOTE:
FOR SIDE PROPERTY LINES: SET CONCRETE
NAIL AND TIN IN THE REAR WALL ON THE
PROPERTY LINE PROJECTED. SET SAWCUT
IN THE BACK OF CURB AT THE FRONT OF
THE LOT ON THE PROPERTY LINE
PROJECTED.
SET 2"x2" HUB AND TACK AT LOT CORNERS
WHERE THERE IS NO BLOCK WALL.

LEGEND

- SET 5/8" REBAR AND ALUM. CAP
STAMPED P.L.S. 7755 W/ ALUMINUM
CAP TIES IN TOP OF CURB
(UNLESS OTHERWISE NOTED)
- 171 LOT NUMBER
TOTAL RESIDENTIAL LOTS = 267
COMMON LOTS IN SUBDIVISION = 8
- 6 BLOCK NUMBER
- SUBDIVISION BOUNDARY LINE
- STREET CENTERLINE

SHEET 11 OF 12

Book _____ Page _____

058-4141-40

2667

