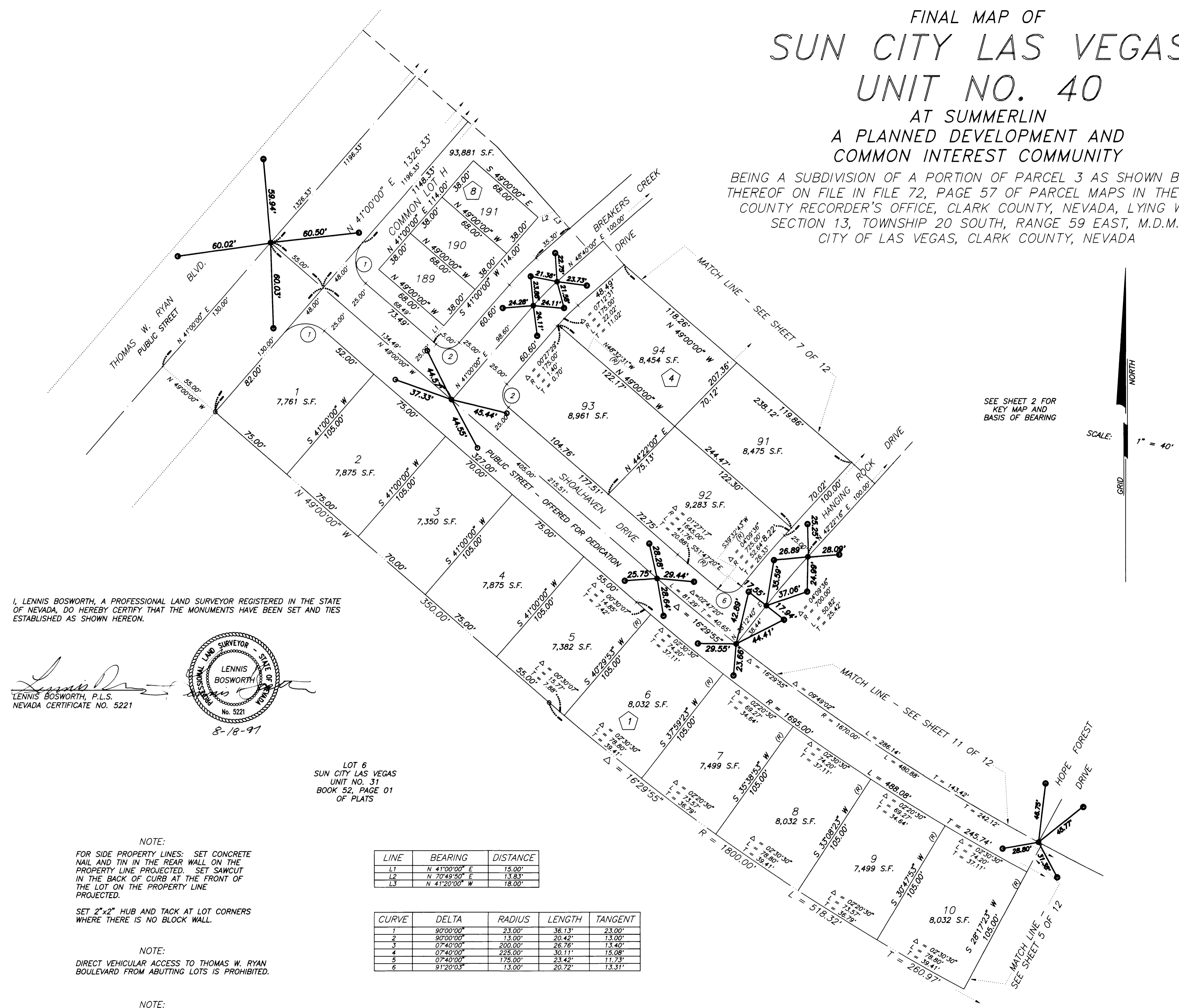


MONUMENT TIE MAP

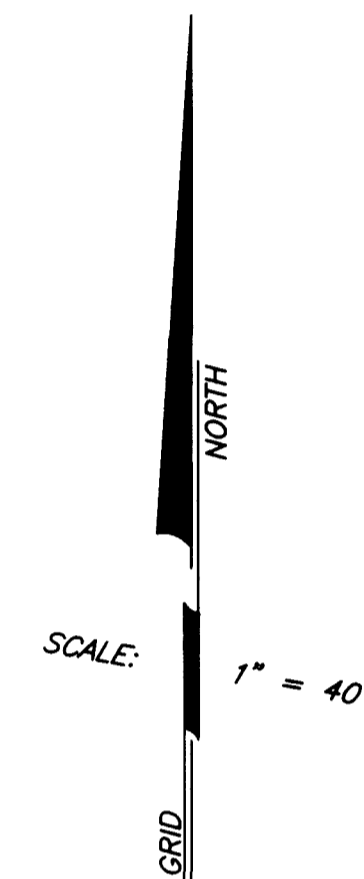
FINAL MAP OF SUN CITY LAS VEGAS UNIT NO. 40

AT SUMMERLIN
A PLANNED DEVELOPMENT AND
COMMON INTEREST COMMUNITY

BEING A SUBDIVISION OF A PORTION OF PARCEL 3 AS SHOWN BY MAP
THEREOF ON FILE IN FILE 72, PAGE 57 OF PARCEL MAPS IN THE CLARK
COUNTY RECORDER'S OFFICE, CLARK COUNTY, NEVADA, LYING WITHIN
SECTION 13, TOWNSHIP 20 SOUTH, RANGE 59 EAST, M.D.M.,
CITY OF LAS VEGAS, CLARK COUNTY, NEVADA



SEE SHEET 2 FOR
KEY MAP AND
BASIS OF BEARING



I, LENNIS BOSWORTH, A PROFESSIONAL LAND SURVEYOR REGISTERED IN THE STATE OF NEVADA, DO HEREBY CERTIFY THAT THE MONUMENTS HAVE BEEN SET AND TIES ESTABLISHED AS SHOWN HEREON.

Lennis Bosworth
LENNIS BOSWORTH, P.L.S.
NEVADA CERTIFICATE NO. 5221
8-18-91

LOT 6
SUN CITY LAS VEGAS
UNIT NO. 31
BOOK 52, PAGE 01
OF PLATS

NOTE:
FOR SIDE PROPERTY LINES: SET CONCRETE NAIL AND TIN IN THE REAR WALL ON THE PROPERTY LINE PROJECTED. SET SAWCUT IN THE BACK OF CURB AT THE FRONT OF THE LOT ON THE PROPERTY LINE PROJECTED.

SET 2"x2" HUB AND TACK AT LOT CORNERS WHERE THERE IS NO BLOCK WALL.

NOTE:
DIRECT VEHICULAR ACCESS TO THOMAS W. RYAN BOULEVARD FROM ABUTTING LOTS IS PROHIBITED.

NOTE:
LOTS 189 THROUGH 191, INCLUSIVE CONTAIN 2,584 sq EACH.

LINE	BEARING	DISTANCE
L1	N 41°00'00" E	15.00'
L2	N 70°49'50" E	13.83'
L3	N 41°20'00" W	18.00'

CURVE	DELTA	RADIUS	LENGTH	TANGENT
1	90°00'00"	23.00'	36.13'	23.00'
2	90°00'00"	13.00'	20.42'	13.00'
3	07°40'00"	200.00'	26.76'	13.40'
4	07°40'00"	225.00'	30.11'	15.08'
5	07°40'00"	175.00'	23.42'	11.73'
6	91°20'03"	13.00'	20.72'	13.31'

LEGEND

- SET 5/8" REBAR AND ALUM. CAP STAMPED P.L.S. 7755 W/ ALUMINIUM CAP TIES IN TOP OF CURB (UNLESS OTHERWISE NOTED)
- SET MONUMENTATION PER N.R.S. 278.371
- 191 LOT NUMBER
TOTAL RESIDENTIAL LOTS = 267
COMMON LOTS IN SUBDIVISION = 8
- ⓑ BLOCK NUMBER
- L1 LINE SEGMENT NUMBER
- ① CURVE NUMBER
- SUBDIVISION BOUNDARY LINE
- STREET CENTERLINE

D:\DRAWINGS\UN\40\DM40-6T Fr1 Aug 15 15:24:36 1997 BY: TIM DAVIDSON
 PLOTTED: 09/02/92 1:08 pm DRAWING: D:\40\UN\DM40-6

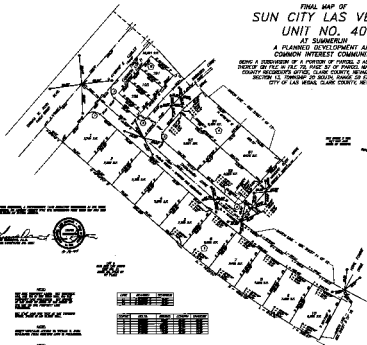
2667

MONUMENT TIE MAP

FINAL MAP OF SUN CITY LAS VEGAS UNIT NO. 40

AT SUMMERLIN
A PLANNED DEVELOPMENT AND
COMMON INTEREST COMMUNITY

BEING A SUBDIVISION OF A PORTION OF PARCEL 2 AS SHOWN BY MAP
INDEXED ON FILE IN FILE 75, PAGE 57 OF PARCEL MAPS BY THE CLARK
COUNTY RECORDERS OFFICE, CLARK COUNTY, NEVADA, 1980 WITHIN
SECTION 13, TOWNSHIP 20 SOUTH, RANGE 20 EAST, MERIDIAN,
CITY OF LAS VEGAS, CLARK COUNTY, NEVADA



THIS MAP WAS PREPARED BY THE ENGINEER SHOWN ON THE
CERTIFICATE OF TITLE HEREON

[Signature]
REGISTERED PROFESSIONAL ENGINEER
NO. 12345



THIS MAP WAS PREPARED BY THE ENGINEER SHOWN ON THE
CERTIFICATE OF TITLE HEREON

[Signature]
REGISTERED PROFESSIONAL ENGINEER
NO. 12345

LOT	ACRES	OWNER
101	0.10	...
102	0.10	...

LOT	ACRES	OWNER	REMARKS
101	0.10
102	0.10



- LEGEND**
- SUN CITY LAS VEGAS
 - SUN CITY LAS VEGAS
 - SUN CITY LAS VEGAS
 - SUN CITY LAS VEGAS
 - SUN CITY LAS VEGAS
 - SUN CITY LAS VEGAS
 - SUN CITY LAS VEGAS
 - SUN CITY LAS VEGAS

SUBDIVISION OF PARCEL 2 AS SHOWN BY MAP INDEXED ON FILE IN FILE 75, PAGE 57 OF PARCEL MAPS BY THE CLARK COUNTY RECORDERS OFFICE, CLARK COUNTY, NEVADA, 1980 WITHIN SECTION 13, TOWNSHIP 20 SOUTH, RANGE 20 EAST, MERIDIAN, CITY OF LAS VEGAS, CLARK COUNTY, NEVADA