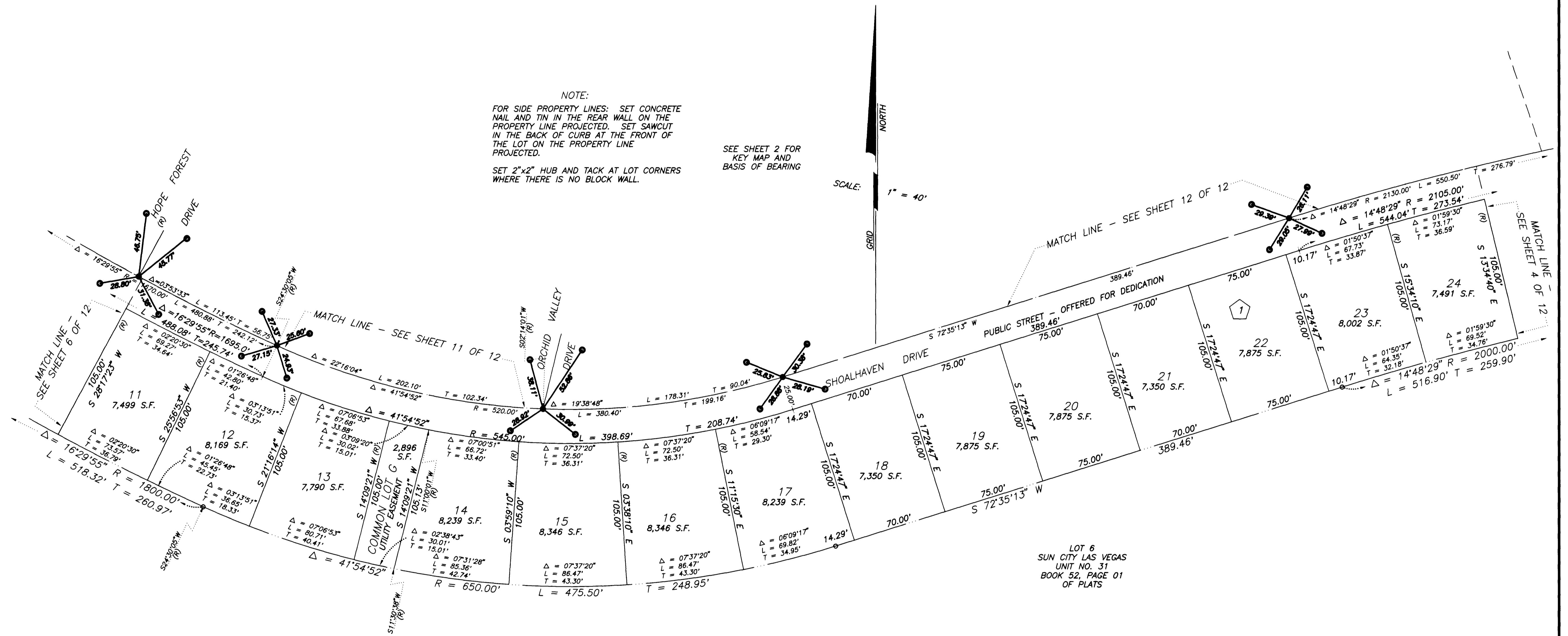


MONUMENT TIE MAP

FINAL MAP OF SUN CITY LAS VEGAS - UNIT NO. 40 AT SUMMERLIN A PLANNED DEVELOPMENT AND COMMON INTEREST COMMUNITY

BEING A SUBDIVISION OF A PORTION OF PARCEL 3 AS SHOWN BY MAP THEREOF ON FILE IN FILE 72, PAGE 57 OF PARCEL MAPS IN THE CLARK COUNTY RECORDER'S OFFICE, CLARK COUNTY, NEVADA, LYING WITHIN SECTION 13, TOWNSHIP 20 SOUTH, RANGE 59 EAST, M.D.M., CITY OF LAS VEGAS, CLARK COUNTY, NEVADA

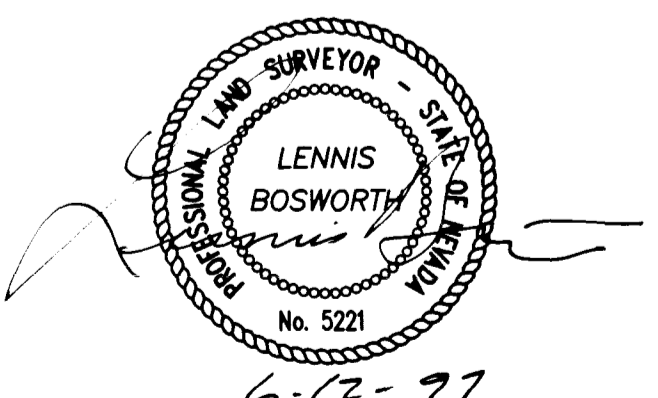


NOTE:
FOR SIDE PROPERTY LINES: SET CONCRETE NAIL AND TIN IN THE REAR WALL ON THE PROPERTY LINE PROJECTED. SET SAWCUT IN THE BACK OF CURB AT THE FRONT OF THE LOT ON THE PROPERTY LINE PROJECTED.
SET 2"x2" HUB AND TACK AT LOT CORNERS WHERE THERE IS NO BLOCK WALL.

SEE SHEET 2 FOR KEY MAP AND BASIS OF BEARING

I, LENNIS BOSWORTH, A PROFESSIONAL LAND SURVEYOR REGISTERED IN THE STATE OF NEVADA, DO HEREBY CERTIFY THAT THE MONUMENTS HAVE BEEN SET AND TIES ESTABLISHED AS SHOWN HEREON.

Lennis Bosworth
LENNIS BOSWORTH, P.L.S.
NEVADA CERTIFICATE NO. 5221



- LEGEND**
- SET 5/8" REBAR AND ALUM. CAP STAMPED P.L.S. 7755 W/ ALUMINIUM CAP TIES IN TOP OF CURB (UNLESS OTHERWISE NOTED)
 - SET MONUMENTATION PER N.R.S. 278.371
 - 24 LOT NUMBER
TOTAL RESIDENTIAL LOTS = 267
COMMON LOTS IN SUBDIVISION = 8
 - ① BLOCK NUMBER
 - SUBDIVISION BOUNDARY LINE
 - STREET CENTERLINE

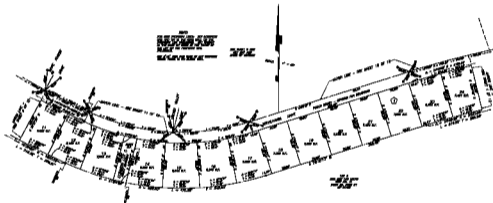
MONUMENT TIE MAP

FINAL MAP OF SUN CITY LAS VEGAS - UNIT NO. 40

AT SUMMERLIN

A PLANNED DEVELOPMENT AND COMMON INTEREST COMMUNITY

BEING A SUBDIVISION OF A PORTION OF PARCEL 3 AS SHOWN BY MAP NUMBER ON FILE IN FILE 73, PAGE 57
OF PARCEL MAPS IN THE CLAYTON COUNTY RECORDS, OFFICE, CLAYTON COUNTY, NEVADA, LYONS BRANCH,
SECTION 12, TOWNSHIP 20 SOUTH, RANGE 09 WEST, MERIDIAN, CITY OF LAS VEGAS, CLAYTON COUNTY, NEVADA



PLAT MAP OF SUN CITY LAS VEGAS - UNIT NO. 40
AT SUMMERLIN



LEGEND

- 1. SUN CITY LAS VEGAS - UNIT NO. 40
- 2. ALL INFORMATION FOR THIS MAP
- 3. RECORDS DEPARTMENT - 73
- 4. SUN CITY
- 5. SUN CITY LAS VEGAS - UNIT NO. 40
- 6. SUN CITY

SHEET 3 OF 12