

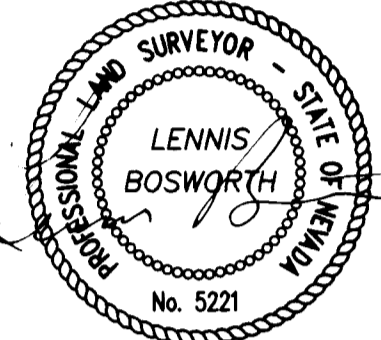
MONUMENT TIE MAP

FINAL MAP OF SUN CITY LAS VEGAS – UNIT NO. 40 AT SUMMERLIN

A PLANNED DEVELOPMENT AND COMMON INTEREST COMMUNITY

BEING A SUBDIVISION OF A PORTION OF PARCEL 3 AS SHOWN BY MAP THEREOF ON FILE IN FILE 72, PAGE 57 OF PARCEL MAPS IN THE CLARK COUNTY RECORDER'S OFFICE, CLARK COUNTY, NEVADA, LYING WITHIN SECTION 13, TOWNSHIP 20 SOUTH, RANGE 59 EAST, M.D.M., CITY OF LAS VEGAS, CLARK COUNTY, NEVADA

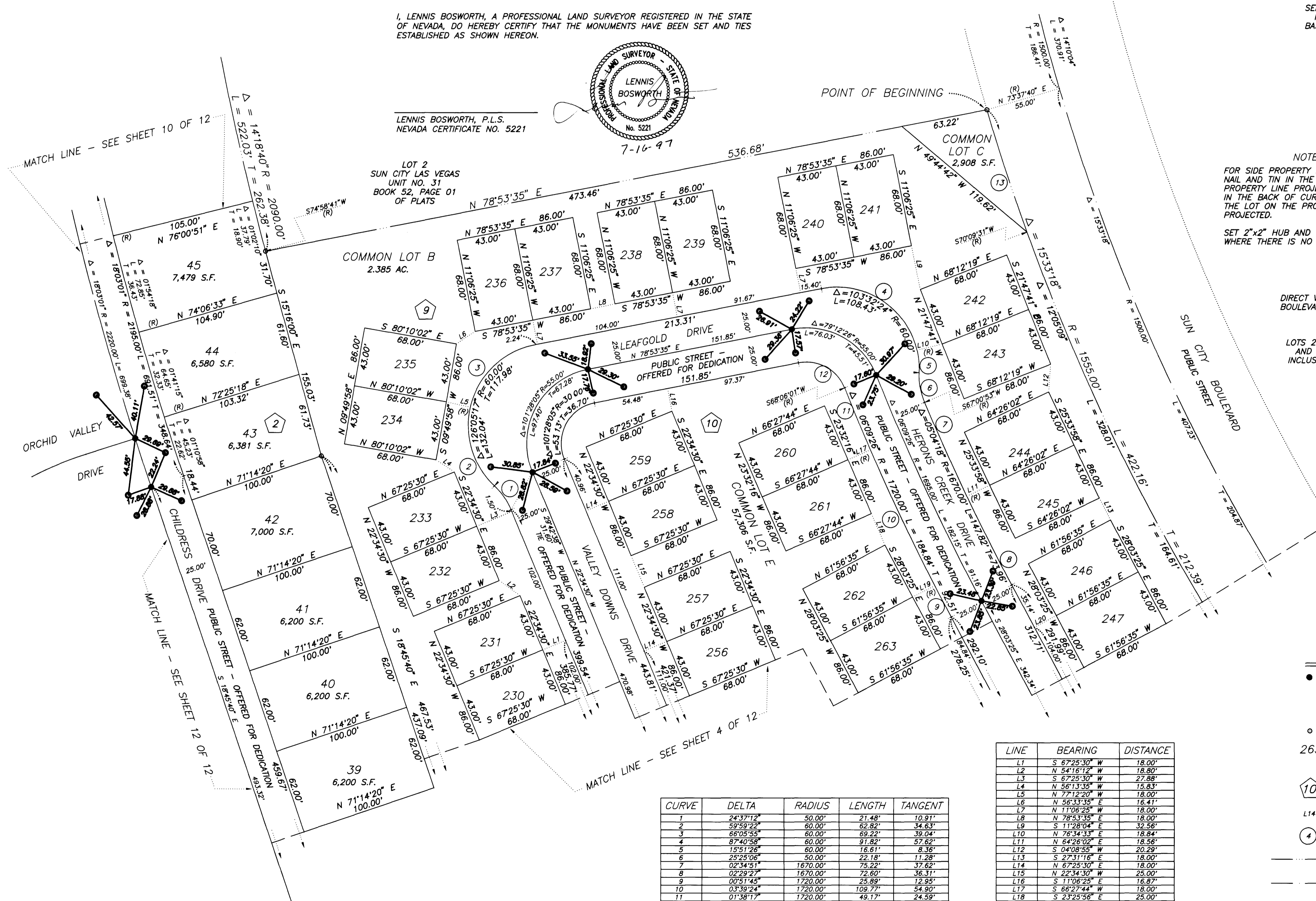
I, LENNIS BOSWORTH, A PROFESSIONAL LAND SURVEYOR REGISTERED IN THE STATE OF NEVADA, DO HEREBY CERTIFY THAT THE MONUMENTS HAVE BEEN SET AND TIES ESTABLISHED AS SHOWN HEREON.



LENNIS BOSWORTH, P.L.S.
NEVADA CERTIFICATE NO. 5221

SEE SHEET 2 FOR
KEY MAP AND
BASIS OF BEARING

SCALE: 1" = 40'



NOTE:
FOR SIDE PROPERTY LINES: SET CONCRETE NAIL AND TIN IN THE REAR WALL ON THE PROPERTY LINE PROJECTED. SET SAWCUT IN THE BACK OF CURB AT THE FRONT OF THE LOT ON THE PROPERTY LINE PROJECTED.

SET 2"x2" HUB AND TACK AT LOT CORNERS WHERE THERE IS NO BLOCK WALL.

NOTE:
DIRECT VEHICULAR ACCESS TO SUN CITY BOULEVARD FROM ABUTTING LOTS IS PROHIBITED.

NOTE:
LOTS 230 THROUGH 247, INCLUSIVE AND LOTS 256 THROUGH 263, INCLUSIVE CONTAIN 2,924 SF EACH.

LEGEND

- SET 5/8" REBAR AND ALUM. CAP STAMPED P.L.S. 7755 W/ ALUMINIUM CAP TIES IN TOP OF CURB (UNLESS OTHERWISE NOTED)
- SET MONUMENTATION PER N.R.S. 278.371
- 263 LOT NUMBER
TOTAL RESIDENTIAL LOTS = 267
COMMON LOTS IN SUBDIVISION = 8
- 10 BLOCK NUMBER
- L14 LINE SEGMENT NUMBER
- 4 CURVE NUMBER
- SUBDIVISION BOUNDARY LINE
- STREET CENTERLINE

CURVE	DELTA	RADIUS	LENGTH	TANGENT
1	24.3712°	50.00'	21.48'	10.91'
2	59.5923°	60.00'	62.82'	34.83'
3	68.0555°	60.00'	69.22'	39.04'
4	87.4058°	60.00'	91.82'	57.62'
5	125.5126°	60.00'	166.61'	88.38'
6	252.506°	50.00'	22.18'	11.28'
7	02.3451°	1670.00'	75.22'	37.62'
8	02.2927°	1670.00'	72.60'	36.31'
9	00.5145°	1720.00'	25.89'	12.95'
10	03.9124°	1720.00'	109.77'	54.90'
11	01.3817°	1720.00'	49.17'	24.59'
12	79.1226°	30.00'	41.47'	24.82'
13	03.2809°	1555.00'	94.15'	47.09'

LINE	BEARING	DISTANCE
L1	S 67°25'30" W	18.00'
L2	N 54°16'12" W	18.00'
L3	S 67°25'30" W	27.88'
L4	N 56°13'35" W	15.83'
L5	N 71°14'20" W	18.00'
L6	N 56°33'35" W	18.41'
L7	N 11°06'25" W	18.00'
L8	N 78°53'35" E	18.00'
L9	S 11°28'04" E	32.58'
L10	N 76°34'33" E	18.84'
L11	N 64°26'02" E	18.58'
L12	S 04°08'55" W	20.29'
L13	S 23°11'06" E	18.00'
L14	N 67°25'30" E	18.00'
L15	N 22°34'30" W	25.00'
L16	S 11°06'25" E	18.87'
L17	S 68°27'44" W	18.00'
L18	S 23°25'56" E	25.00'
L19	S 62°48'20" W	18.20'
L20	N 61°56'35" E	18.02'

