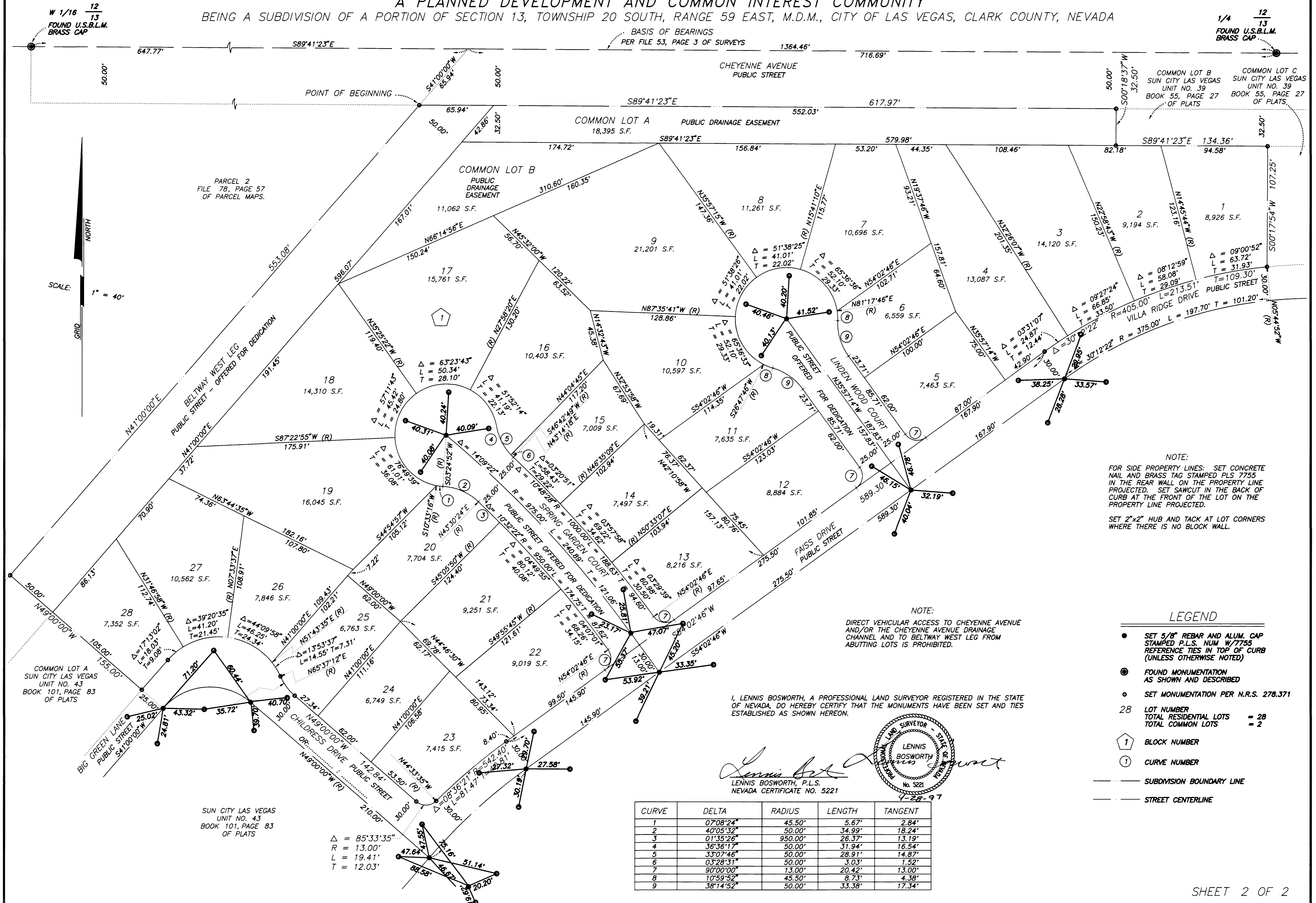


MONUMENT TIE MAP SUN CITY LAS VEGAS – UNIT NO. 39A

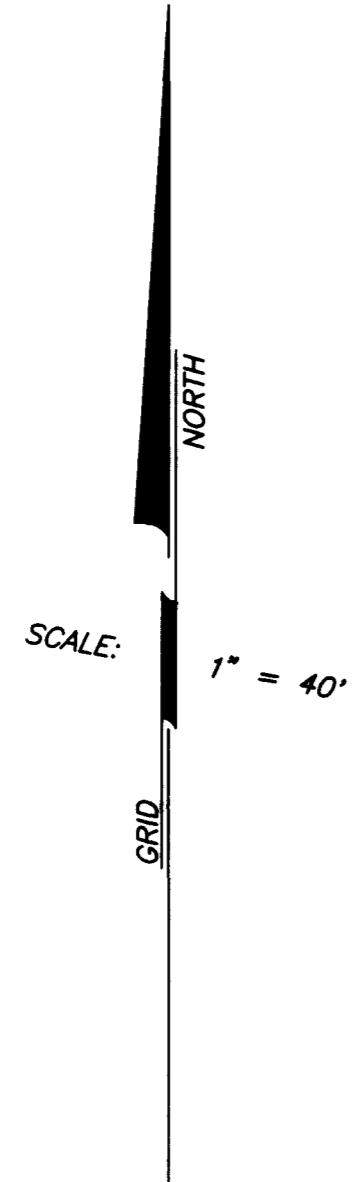
AT SUMMERLIN
A PLANNED DEVELOPMENT AND COMMON INTEREST COMMUNITY

BEING A SUBDIVISION OF A PORTION OF SECTION 13, TOWNSHIP 20 SOUTH, RANGE 59 EAST, M.D.M., CITY OF LAS VEGAS, CLARK COUNTY, NEVADA



W 1/16 12
13
FOUND U.S.B.L.M.
BRASS CAP

1/4 12
13
FOUND U.S.B.L.M.
BRASS CAP

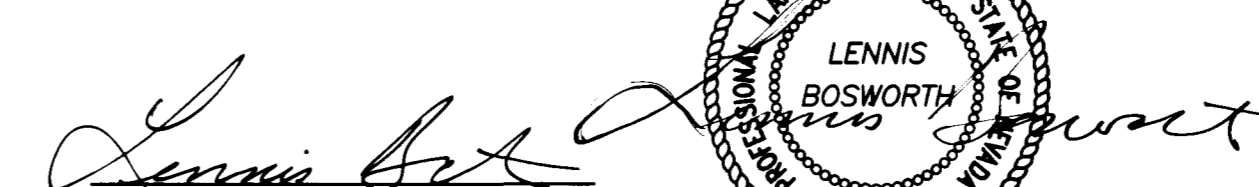


NOTE:
FOR SIDE PROPERTY LINES: SET CONCRETE NAIL AND BRASS TAG STAMPED PLS 7755 IN THE REAR WALL ON THE PROPERTY LINE PROJECTED. SET SAWCUT IN THE BACK OF CURB AT THE FRONT OF THE LOT ON THE PROPERTY LINE PROJECTED.

SET 2"x2" HUB AND TACK AT LOT CORNERS WHERE THERE IS NO BLOCK WALL.

NOTE:
DIRECT VEHICULAR ACCESS TO CHEYENNE AVENUE AND/OR THE CHEYENNE AVENUE DRAINAGE CHANNEL AND TO BELTWAY WEST LEG FROM ABUTTING LOTS IS PROHIBITED.

I, LENNIS BOSWORTH, A PROFESSIONAL LAND SURVEYOR REGISTERED IN THE STATE OF NEVADA, DO HEREBY CERTIFY THAT THE MONUMENTS HAVE BEEN SET AND TIES ESTABLISHED AS SHOWN HEREON.


 LENNIS BOSWORTH, P.L.S.
 NEVADA CERTIFICATE NO. 5221
 4-28-97

- LEGEND**
- SET 5/8" REBAR AND ALUM. CAP STAMPED P.L.S. NUM. W/7755 REFERENCE TIES IN TOP OF CURB (UNLESS OTHERWISE NOTED)
 - ⊙ FOUND MONUMENTATION AS SHOWN AND DESCRIBED
 - SET MONUMENTATION PER N.R.S. 278.371
 - 28 LOT NUMBER
TOTAL RESIDENTIAL LOTS = 28
TOTAL COMMON LOTS = 2
 - ① BLOCK NUMBER
 - ② CURVE NUMBER
 - SUBDIVISION BOUNDARY LINE
 - STREET CENTERLINE

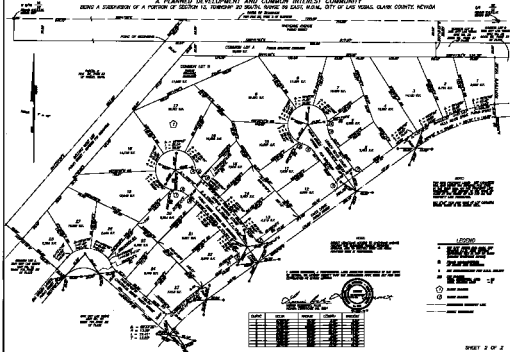
CURVE	DELTA	RADIUS	LENGTH	TANGENT
1	07°08'24"	45.50'	5.67'	2.84'
2	40°05'32"	50.00'	34.99'	18.24'
3	01°35'26"	950.00'	26.37'	13.19'
4	36°36'17"	50.00'	31.94'	16.54'
5	33°07'46"	50.00'	28.91'	14.87'
6	03°28'31"	50.00'	3.03'	1.52'
7	90°00'00"	13.00'	20.42'	13.00'
8	10°59'52"	45.50'	8.73'	4.38'
9	38°14'52"	50.00'	33.38'	17.34'

PLOTTED: 07/12/94 10:27 am DRAWING: C:\SUN\PLAT\DWG39A-2 BR: cwp

2660

MONUMENT TIE MAP SUN CITY LAS VEGAS - UNIT NO. 39A

AT SUMMERLIN
A PLANNED DEVELOPMENT AND COMMON INTEREST COMMUNITY
BEING A SUBDIVISION OF A PORTION OF SECTION 13, TOWNSHIP 20 SOUTH, RANGE 28 EAST, N.M.S., CITY OF LAS VEGAS, CLARK COUNTY, NEVADA



RECORDS SECTION
CLERK OF COUNTY

RECORDS SECTION
CLERK OF COUNTY

- LEGEND**
- 1. **PLANNED DEVELOPMENT**
 - 2. **STREET**
 - 3. **LOT**
 - 4. **COMMON INTEREST AREA**
 - 5. **RESERVED**
 - 6. **UNDEVELOPED LAND**
 - 7. **WATER**

DATE	BY	REVISION	CHANGED	REMARKS