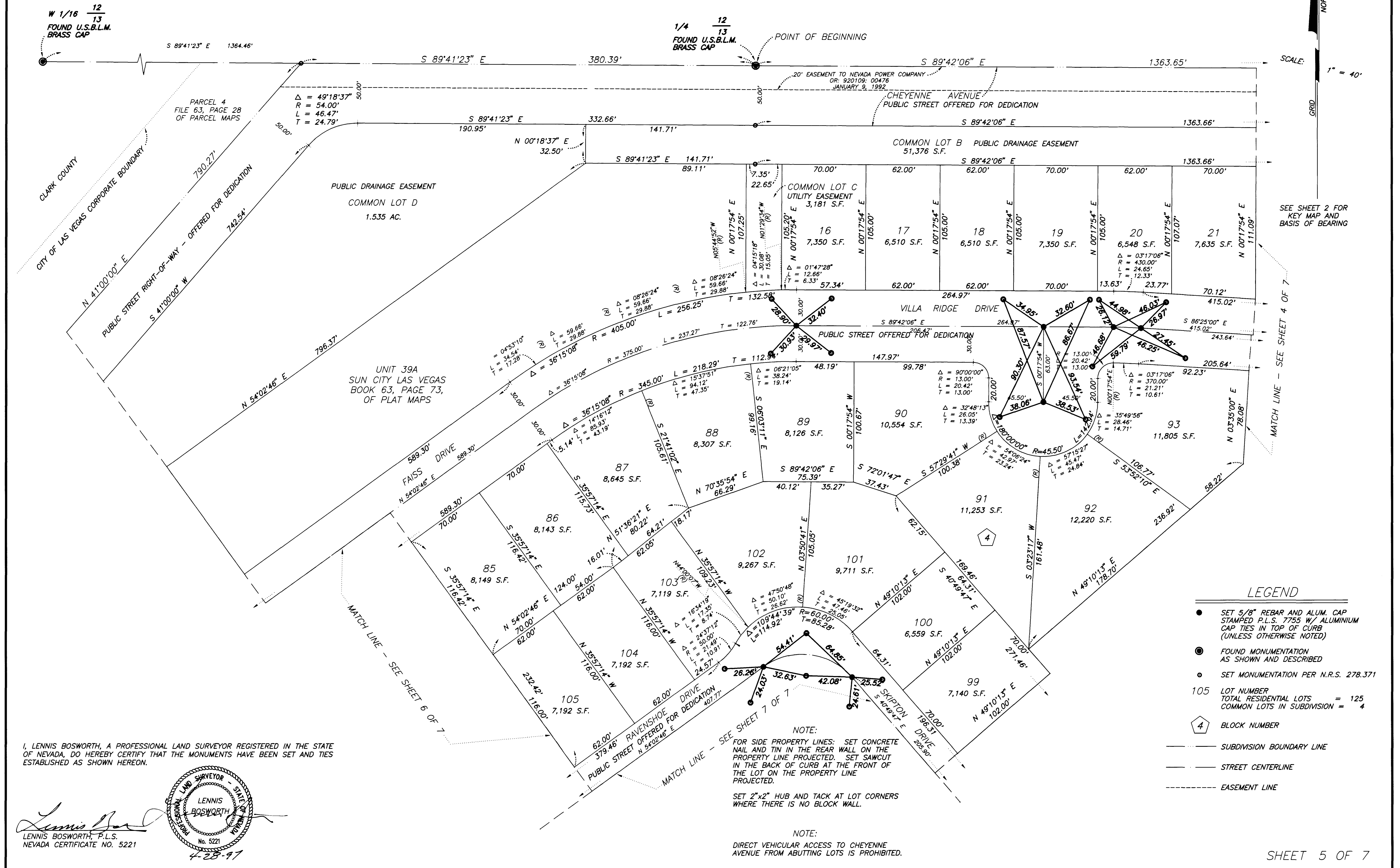


MONUMENT TIE MAP

SUN CITY LAS VEGAS - UNIT NO. 39

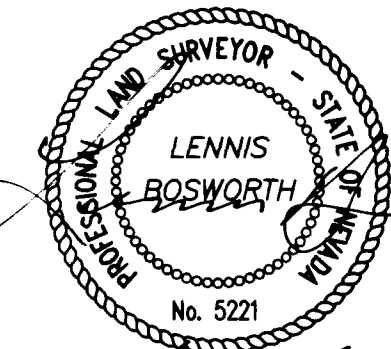
AT SUMMERLIN
A PLANNED DEVELOPMENT AND COMMON INTEREST COMMUNITY

BEING A SUBDIVISION OF A PORTION OF PARCEL 4 AS SHOWN BY MAP THEREOF ON FILE IN FILE 72, PAGE 57
OF PARCEL MAPS IN THE CLARK COUNTY RECORDER'S OFFICE, CLARK COUNTY, NEVADA, LYING WITHIN
SECTION 13, TOWNSHIP 20 SOUTH, RANGE 59 EAST, M.D.M., CITY OF LAS VEGAS, CLARK COUNTY, NEVADA



I, LENNIS BOSWORTH, A PROFESSIONAL LAND SURVEYOR REGISTERED IN THE STATE OF NEVADA, DO HEREBY CERTIFY THAT THE MONUMENTS HAVE BEEN SET AND TIES ESTABLISHED AS SHOWN HEREON.

Lennis Bosworth
LENNIS BOSWORTH, P.L.S.
NEVADA CERTIFICATE NO. 5221
4-28-97



- LEGEND**
- SET 5/8" REBAR AND ALUM. CAP STAMPED P.L.S. 7755 W/ ALUMINUM CAP TIES IN TOP OF CURB (UNLESS OTHERWISE NOTED)
 - ⊙ FOUND MONUMENTATION AS SHOWN AND DESCRIBED
 - SET MONUMENTATION PER N.R.S. 278.371
 - 105 LOT NUMBER
TOTAL RESIDENTIAL LOTS = 125
COMMON LOTS IN SUBDIVISION = 4
 - 4 BLOCK NUMBER
 - SUBDIVISION BOUNDARY LINE
 - STREET CENTERLINE
 - EASEMENT LINE

NOTE:
FOR SIDE PROPERTY LINES: SET CONCRETE WALL AND TIN IN THE REAR WALL ON THE PROPERTY LINE PROJECTED. SET SAWCUT IN THE BACK OF CURB AT THE FRONT OF THE LOT ON THE PROPERTY LINE PROJECTED.
SET 2" x 2" HUB AND TACK AT LOT CORNERS WHERE THERE IS NO BLOCK WALL.

NOTE:
DIRECT VEHICULAR ACCESS TO CHEYENNE AVENUE FROM ABUTTING LOTS IS PROHIBITED.

PLOTTED: 10/28/92 3:39 pm DRAWING: D:\SUBDIVISIONS\9-5

MONUMENT TIE MAP SUN CITY LAS VEGAS - UNIT NO. 39

AT SUMMERLIN
A PLANNED DEVELOPMENT AND COMMON INTEREST COMMUNITY

BEING A SUBDIVISION OF A PORTION OF PARCEL 4 AS SHOWN BY MAP INDEXED ON FILE IN FILE 72, PAGE 37
OF PARCEL 4 MAPS IN THE CLARK COUNTY RECORDS OFFICE, CLARK COUNTY, NEVADA, BEING
SECTION 12, TOWNSHIP 30 SOUTH, RANGE 23 EAST, N.M.S., CITY OF LAS VEGAS, CLARK COUNTY, NEVADA

