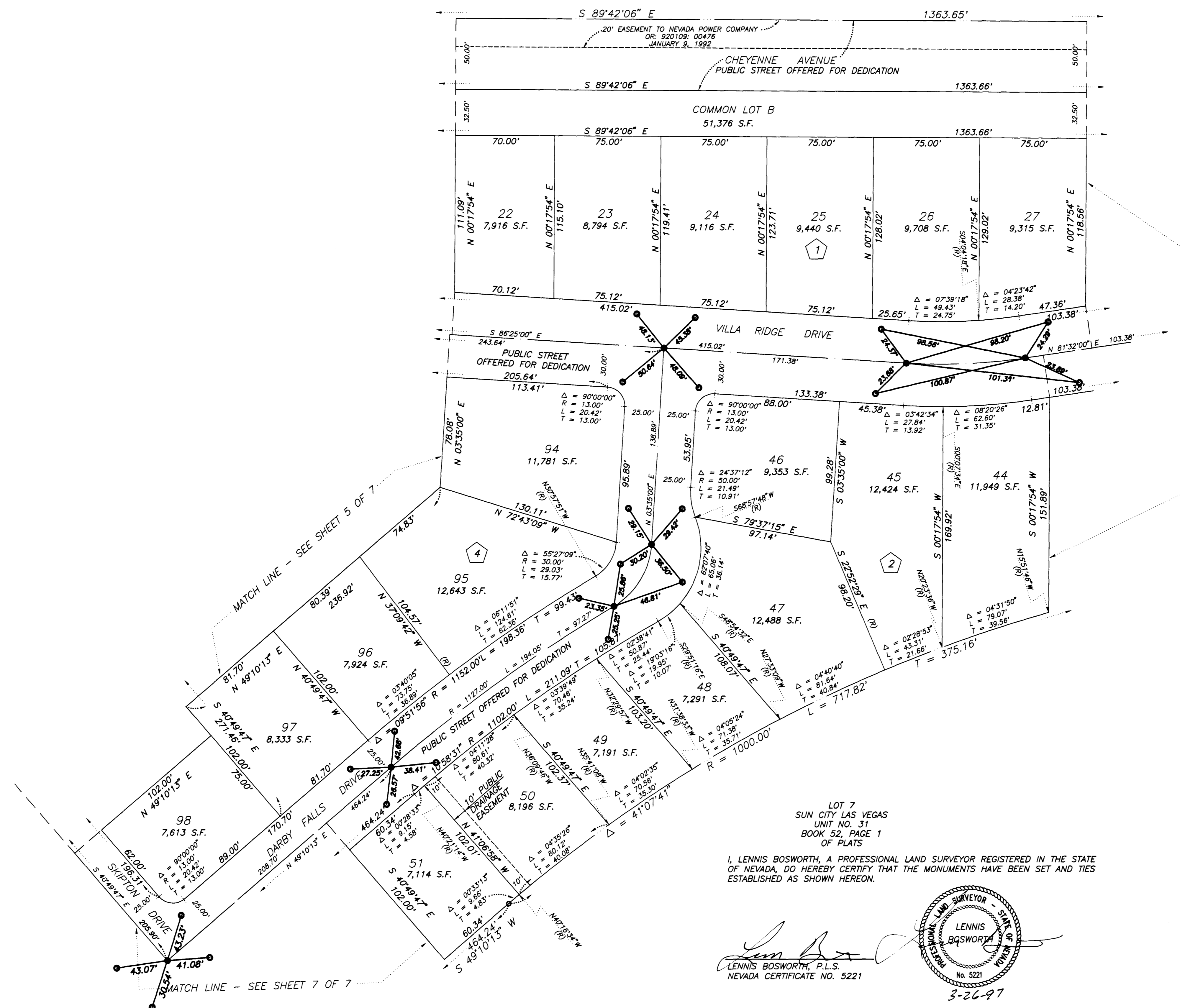


# MONUMENT TIE MAP SUN CITY LAS VEGAS - UNIT NO. 39

## AT SUMMERLIN A PLANNED DEVELOPMENT AND COMMON INTEREST COMMUNITY

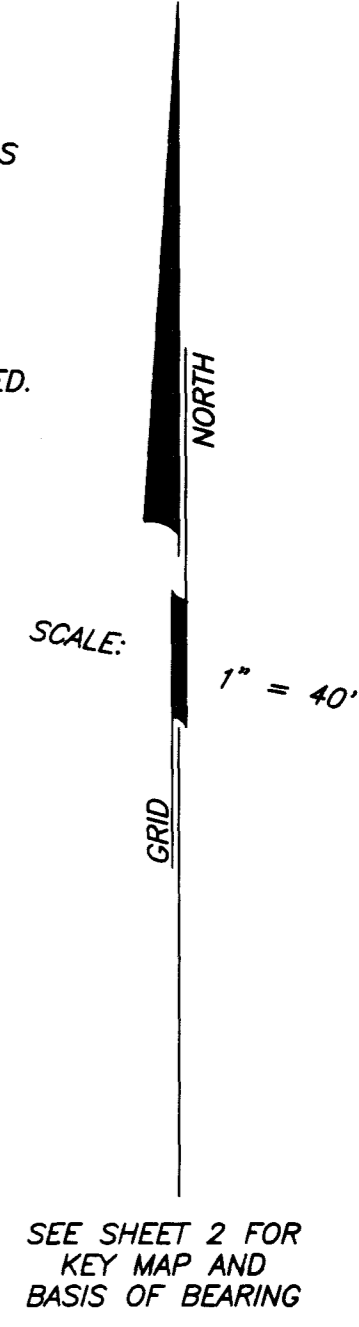
BEING A SUBDIVISION OF A PORTION OF PARCEL 4 AS SHOWN BY MAP THEREOF ON FILE IN FILE 72, PAGE 57 OF PARCEL MAPS IN THE CLARK COUNTY RECORDER'S OFFICE, CLARK COUNTY, NEVADA, LYING WITHIN SECTION 13, TOWNSHIP 20 SOUTH, RANGE 59 EAST, M.D.M., CITY OF LAS VEGAS, CLARK COUNTY, NEVADA



NOTE:  
FOR SIDE PROPERTY LINES: SET CONCRETE NAIL AND TIN IN THE REAR WALL ON THE PROPERTY LINE PROJECTED. SET SAWCUT IN THE BACK OF CURB AT THE FRONT OF THE LOT ON THE PROPERTY LINE PROJECTED.

SET 2"x2" HUB AND TACK AT LOT CORNERS WHERE THERE IS NO BLOCK WALL.

NOTE:  
DIRECT VEHICULAR ACCESS TO CHEYENNE AVENUE FROM ABUTTING LOTS IS PROHIBITED.



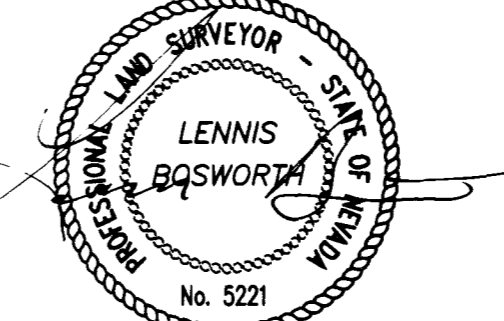
- LEGEND**
- SET 5/8" REBAR AND ALUM. CAP. STAMPED P.L.S. 7755 W/ ALUMINUM CAP TIES IN TOP OF CURB (UNLESS OTHERWISE NOTED)
  - SET MONUMENTATION PER N.R.S. 278.371
  - 98 LOT NUMBER  
TOTAL RESIDENTIAL LOTS = 125  
COMMON LOTS IN SUBDIVISION = 4
  - ④ BLOCK NUMBER
  - SUBDIVISION BOUNDARY LINE
  - STREET CENTERLINE
  - - - - EASEMENT LINE

LOT 7  
SUN CITY LAS VEGAS  
UNIT NO. 39  
BOOK 52, PAGE 1  
OF PLATS

I, LENNIS BOSWORTH, A PROFESSIONAL LAND SURVEYOR REGISTERED IN THE STATE OF NEVADA, DO HEREBY CERTIFY THAT THE MONUMENTS HAVE BEEN SET AND TIES ESTABLISHED AS SHOWN HEREON.

LENNIS BOSWORTH, P.L.S.  
NEVADA CERTIFICATE NO. 5221

3-26-97



PLOTTED: 09/21/92 1:52 pm DRAWING: D:\SUBUNIT\058-4

2658

# MONUMENT TIE MAP

## SUN CITY LAS VEGAS - UNIT NO. 39

AT SUMMERLIN

A PLANNED DEVELOPMENT AND COMMON INTEREST COMMUNITY

BEING A SUBDIVISION OF A PORTION OF PARCEL 4 AS SHOWN BY MAP THEREOF ON FILE IN FILE 75, PAGE 57  
OF PARCEL MAPS IN THE CLARK COUNTY RECORDS' OFFICE, CLARK COUNTY, NEVADA, LEGAL MERION  
SECTION 13, TOWNSHIP 30 NORTH, RANGE 38 EAST, N.D.M., CITY OF LAS VEGAS, CLARK COUNTY, NEVADA



WITH  
**REVISIONS TO THE**  
**PLAT MAP NO. 39**  
**AS FILED IN FILE 75,**  
**PAGE 57**  
**OF PARCEL MAPS IN THE**  
**CLARK COUNTY RECORDS' OFFICE,**  
**CLARK COUNTY, NEVADA**



- LEGEND**
- LOT BOUNDARIES
  - STREET BOUNDARIES
  - COMMON INTEREST COMMUNITY BOUNDARIES
  - MONUMENT TIE
  - EASEMENT
  - UTILITY LINE

I, \_\_\_\_\_  
 CLERK OF THE COUNTY OF CLARK,  
 NEVADA, DO HEREBY CERTIFY THAT THE FOREGOING IS A TRUE AND CORRECT COPY OF THE  
 ORIGINAL AS FILED IN MY OFFICE.

