

# MONUMENT TIE MAP

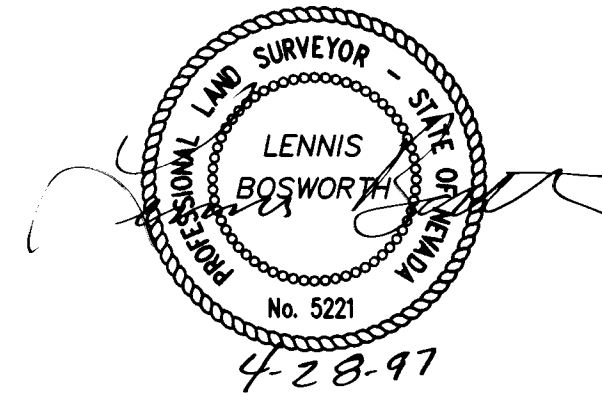
## SUN CITY LAS VEGAS - UNIT NO. 31

### A PLANNED DEVELOPMENT

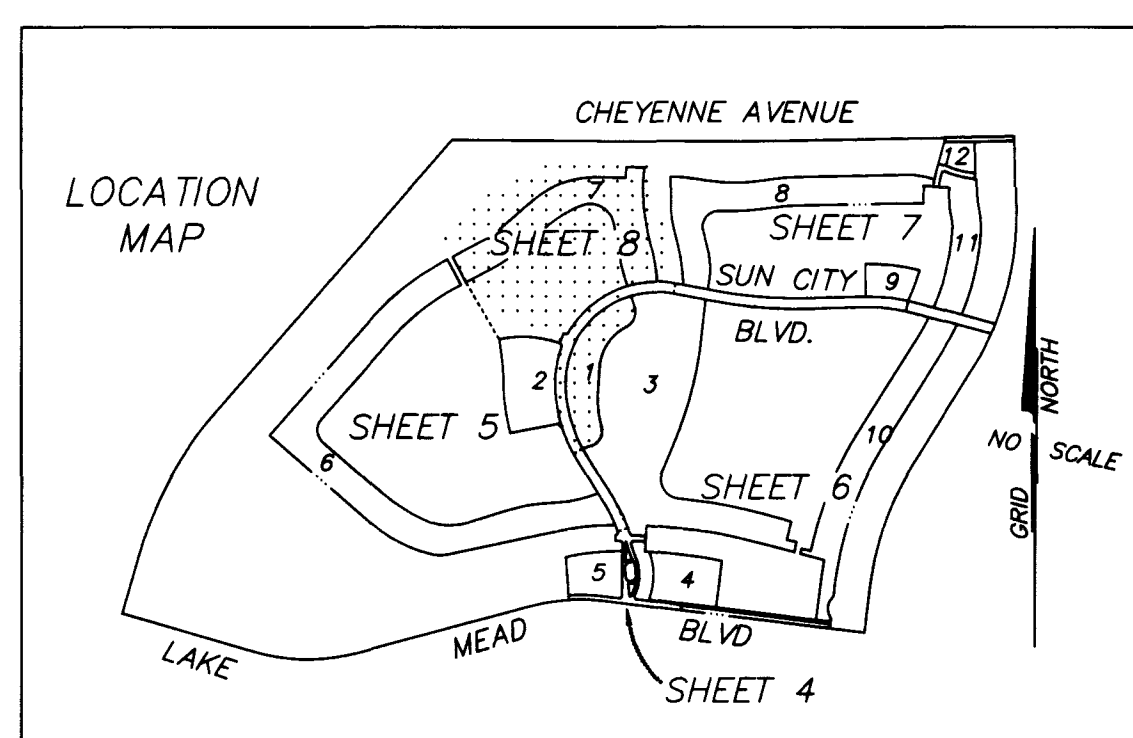
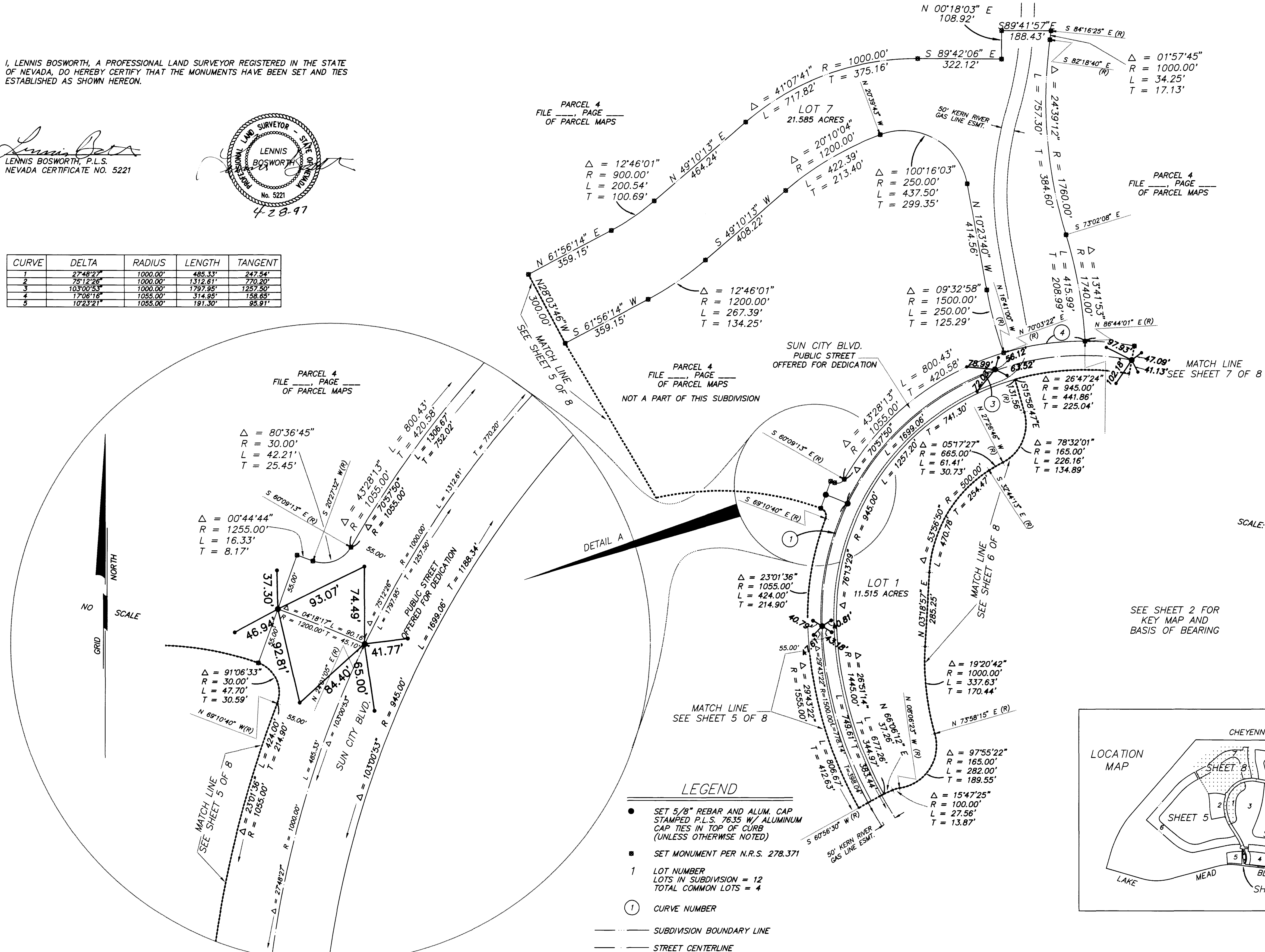
BEING A SUBDIVISION OF A PORTION OF PARCEL 1 AS SHOWN BY MAP THEREOF ON FILE IN FILE \_\_\_\_\_, PAGE \_\_\_\_\_ OF PARCEL MAPS IN THE CLARK COUNTY RECORDER'S OFFICE, CLARK COUNTY, NEVADA, LYING WITHIN SECTION 13, TOWNSHIP 20 SOUTH, RANGE 59 EAST, M.D.M., AND SECTION 18, TOWNSHIP 20 SOUTH, RANGE 60 EAST, M.D.M., CITY OF LAS VEGAS, CLARK COUNTY, NEVADA.

I, LENNIS BOSWORTH, A PROFESSIONAL LAND SURVEYOR REGISTERED IN THE STATE OF NEVADA, DO HEREBY CERTIFY THAT THE MONUMENTS HAVE BEEN SET AND TIES ESTABLISHED AS SHOWN HEREON.

*Lennis Bosworth*  
 LENNIS BOSWORTH, P.L.S.  
 NEVADA CERTIFICATE NO. 5221



CURVE	DELTA	RADIUS	LENGTH	TANGENT
1	27°48'27"	1000.00'	485.33'	243.54'
2	75°12'26"	1000.00'	1312.61'	770.20'
3	103°00'53"	1000.00'	1797.95'	1257.50'
4	17°08'16"	1055.00'	314.95'	158.65'
5	102°32'21"	1055.00'	191.30'	95.91'



- LEGEND**
- SET 5/8" REBAR AND ALUM. CAP STAMPED P.L.S. 7635 W/ ALUMINUM CAP TIES IN TOP OF CURB (UNLESS OTHERWISE NOTED)
  - SET MONUMENT PER N.R.S. 278.371
  - 1 LOT NUMBER  
LOTS IN SUBDIVISION = 12  
TOTAL COMMON LOTS = 4
  - ① CURVE NUMBER
  - SUBDIVISION BOUNDARY LINE
  - STREET CENTERLINE

SCALE: 1" = 200'

SEE SHEET 2 FOR KEY MAP AND BASIS OF BEARING

