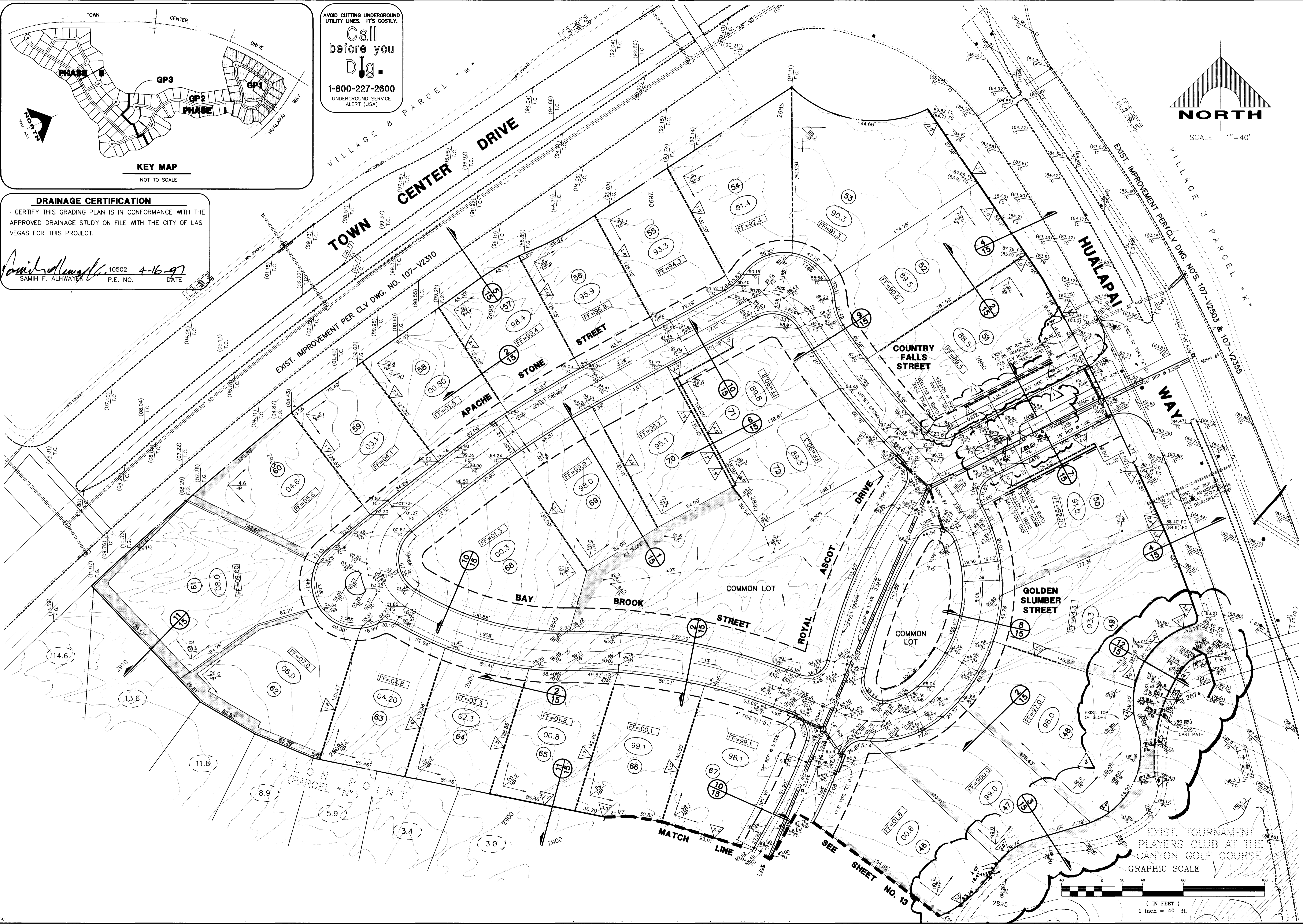


Call before you Dig.
1-800-227-2600
UNDERGROUND SERVICE ALERT (USA)

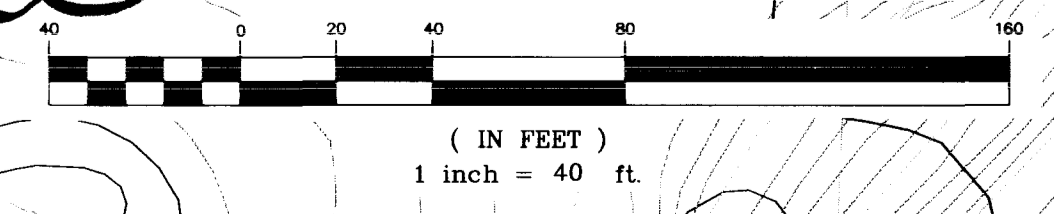
AVOID CUTTING UNDERGROUND UTILITY LINES. IT'S COSTLY.

DRAINAGE CERTIFICATION
I CERTIFY THIS GRADING PLAN IS IN CONFORMANCE WITH THE APPROVED DRAINAGE STUDY ON FILE WITH THE CITY OF LAS VEGAS FOR THIS PROJECT.

Samih F. Alhwaye 10502 4-16-97
SAMIH F. ALHWAYE P.E. NO. DATE



SCALE 1"=40'



REV	DATE	DESCRIPTION
1	02/02/97	REV. ENTRY WAY AND ASSOCIATED S.W.
2	02/02/97	REV. ENTRY WAY AND ASSOCIATED S.W.
3	02/02/97	REV. ENTRY WAY AND ASSOCIATED S.W.
4	02/02/97	REV. ENTRY WAY AND ASSOCIATED S.W.
5	02/02/97	REV. ENTRY WAY AND ASSOCIATED S.W.
6	02/02/97	REV. ENTRY WAY AND ASSOCIATED S.W.
7	02/02/97	REV. ENTRY WAY AND ASSOCIATED S.W.
8	02/02/97	REV. ENTRY WAY AND ASSOCIATED S.W.
9	02/02/97	REV. ENTRY WAY AND ASSOCIATED S.W.
10	02/02/97	REV. ENTRY WAY AND ASSOCIATED S.W.
11	02/02/97	REV. ENTRY WAY AND ASSOCIATED S.W.
12	02/02/97	REV. ENTRY WAY AND ASSOCIATED S.W.
13	02/02/97	REV. ENTRY WAY AND ASSOCIATED S.W.
14	02/02/97	REV. ENTRY WAY AND ASSOCIATED S.W.
15	02/02/97	REV. ENTRY WAY AND ASSOCIATED S.W.
16	02/02/97	REV. ENTRY WAY AND ASSOCIATED S.W.
17	02/02/97	REV. ENTRY WAY AND ASSOCIATED S.W.
18	02/02/97	REV. ENTRY WAY AND ASSOCIATED S.W.
19	02/02/97	REV. ENTRY WAY AND ASSOCIATED S.W.
20	02/02/97	REV. ENTRY WAY AND ASSOCIATED S.W.
21	02/02/97	REV. ENTRY WAY AND ASSOCIATED S.W.
22	02/02/97	REV. ENTRY WAY AND ASSOCIATED S.W.
23	02/02/97	REV. ENTRY WAY AND ASSOCIATED S.W.
24	02/02/97	REV. ENTRY WAY AND ASSOCIATED S.W.
25	02/02/97	REV. ENTRY WAY AND ASSOCIATED S.W.
26	02/02/97	REV. ENTRY WAY AND ASSOCIATED S.W.
27	02/02/97	REV. ENTRY WAY AND ASSOCIATED S.W.
28	02/02/97	REV. ENTRY WAY AND ASSOCIATED S.W.
29	02/02/97	REV. ENTRY WAY AND ASSOCIATED S.W.
30	02/02/97	REV. ENTRY WAY AND ASSOCIATED S.W.
31	02/02/97	REV. ENTRY WAY AND ASSOCIATED S.W.
32	02/02/97	REV. ENTRY WAY AND ASSOCIATED S.W.
33	02/02/97	REV. ENTRY WAY AND ASSOCIATED S.W.
34	02/02/97	REV. ENTRY WAY AND ASSOCIATED S.W.
35	02/02/97	REV. ENTRY WAY AND ASSOCIATED S.W.
36	02/02/97	REV. ENTRY WAY AND ASSOCIATED S.W.
37	02/02/97	REV. ENTRY WAY AND ASSOCIATED S.W.
38	02/02/97	REV. ENTRY WAY AND ASSOCIATED S.W.
39	02/02/97	REV. ENTRY WAY AND ASSOCIATED S.W.
40	02/02/97	REV. ENTRY WAY AND ASSOCIATED S.W.
41	02/02/97	REV. ENTRY WAY AND ASSOCIATED S.W.
42	02/02/97	REV. ENTRY WAY AND ASSOCIATED S.W.
43	02/02/97	REV. ENTRY WAY AND ASSOCIATED S.W.
44	02/02/97	REV. ENTRY WAY AND ASSOCIATED S.W.
45	02/02/97	REV. ENTRY WAY AND ASSOCIATED S.W.
46	02/02/97	REV. ENTRY WAY AND ASSOCIATED S.W.
47	02/02/97	REV. ENTRY WAY AND ASSOCIATED S.W.
48	02/02/97	REV. ENTRY WAY AND ASSOCIATED S.W.
49	02/02/97	REV. ENTRY WAY AND ASSOCIATED S.W.
50	02/02/97	REV. ENTRY WAY AND ASSOCIATED S.W.
51	02/02/97	REV. ENTRY WAY AND ASSOCIATED S.W.
52	02/02/97	REV. ENTRY WAY AND ASSOCIATED S.W.
53	02/02/97	REV. ENTRY WAY AND ASSOCIATED S.W.
54	02/02/97	REV. ENTRY WAY AND ASSOCIATED S.W.
55	02/02/97	REV. ENTRY WAY AND ASSOCIATED S.W.
56	02/02/97	REV. ENTRY WAY AND ASSOCIATED S.W.
57	02/02/97	REV. ENTRY WAY AND ASSOCIATED S.W.
58	02/02/97	REV. ENTRY WAY AND ASSOCIATED S.W.
59	02/02/97	REV. ENTRY WAY AND ASSOCIATED S.W.
60	02/02/97	REV. ENTRY WAY AND ASSOCIATED S.W.
61	02/02/97	REV. ENTRY WAY AND ASSOCIATED S.W.
62	02/02/97	REV. ENTRY WAY AND ASSOCIATED S.W.
63	02/02/97	REV. ENTRY WAY AND ASSOCIATED S.W.
64	02/02/97	REV. ENTRY WAY AND ASSOCIATED S.W.
65	02/02/97	REV. ENTRY WAY AND ASSOCIATED S.W.
66	02/02/97	REV. ENTRY WAY AND ASSOCIATED S.W.
67	02/02/97	REV. ENTRY WAY AND ASSOCIATED S.W.
68	02/02/97	REV. ENTRY WAY AND ASSOCIATED S.W.
69	02/02/97	REV. ENTRY WAY AND ASSOCIATED S.W.
70	02/02/97	REV. ENTRY WAY AND ASSOCIATED S.W.
71	02/02/97	REV. ENTRY WAY AND ASSOCIATED S.W.
72	02/02/97	REV. ENTRY WAY AND ASSOCIATED S.W.
73	02/02/97	REV. ENTRY WAY AND ASSOCIATED S.W.
74	02/02/97	REV. ENTRY WAY AND ASSOCIATED S.W.
75	02/02/97	REV. ENTRY WAY AND ASSOCIATED S.W.
76	02/02/97	REV. ENTRY WAY AND ASSOCIATED S.W.
77	02/02/97	REV. ENTRY WAY AND ASSOCIATED S.W.
78	02/02/97	REV. ENTRY WAY AND ASSOCIATED S.W.
79	02/02/97	REV. ENTRY WAY AND ASSOCIATED S.W.
80	02/02/97	REV. ENTRY WAY AND ASSOCIATED S.W.
81	02/02/97	REV. ENTRY WAY AND ASSOCIATED S.W.
82	02/02/97	REV. ENTRY WAY AND ASSOCIATED S.W.
83	02/02/97	REV. ENTRY WAY AND ASSOCIATED S.W.
84	02/02/97	REV. ENTRY WAY AND ASSOCIATED S.W.
85	02/02/97	REV. ENTRY WAY AND ASSOCIATED S.W.
86	02/02/97	REV. ENTRY WAY AND ASSOCIATED S.W.
87	02/02/97	REV. ENTRY WAY AND ASSOCIATED S.W.
88	02/02/97	REV. ENTRY WAY AND ASSOCIATED S.W.
89	02/02/97	REV. ENTRY WAY AND ASSOCIATED S.W.
90	02/02/97	REV. ENTRY WAY AND ASSOCIATED S.W.
91	02/02/97	REV. ENTRY WAY AND ASSOCIATED S.W.
92	02/02/97	REV. ENTRY WAY AND ASSOCIATED S.W.
93	02/02/97	REV. ENTRY WAY AND ASSOCIATED S.W.
94	02/02/97	REV. ENTRY WAY AND ASSOCIATED S.W.
95	02/02/97	REV. ENTRY WAY AND ASSOCIATED S.W.
96	02/02/97	REV. ENTRY WAY AND ASSOCIATED S.W.
97	02/02/97	REV. ENTRY WAY AND ASSOCIATED S.W.
98	02/02/97	REV. ENTRY WAY AND ASSOCIATED S.W.
99	02/02/97	REV. ENTRY WAY AND ASSOCIATED S.W.
100	02/02/97	REV. ENTRY WAY AND ASSOCIATED S.W.

G. C. WALLACE, INC.
Engineering/Architecture
1855 SOUTH RAINBOW BLVD./LAS VEGAS, NEVADA 89102
702-363-1200

SAMIH F. ALHWAYE
REGISTERED PROFESSIONAL ENGINEER
STATE OF NEVADA
NO. 10502
DATE 4-16-97

CHRISTOPHER HOMES
SUMMERLIN VILLAGE 3, PARCEL 'O' - PHASE I
GRADING PLAN I

Drawing: D:\DRAWINGS\745070\MPDWG\1070GP112.DWG
April 09, 1997 9:27:24 a.m.

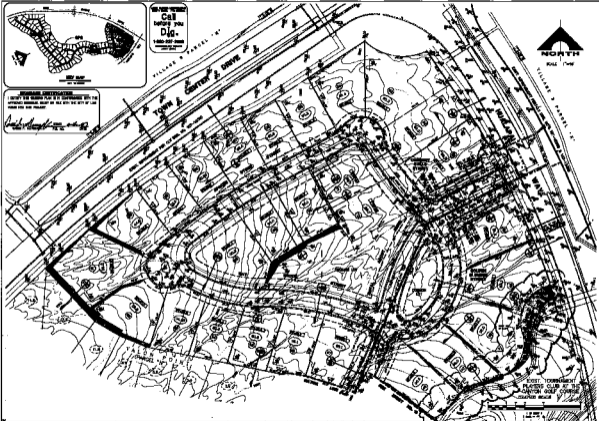
SHEET 12
OF 15 SHEETS

107Y-4510-1



800-782-7828
 Call before you Dig.
 1-800-287-0000
 www.dig.com

STANDARD INFORMATION
 I ACCEPT THE GENERAL PLAN & I AGREE TO THE
 APPLICABLE GENERAL ORDINANCE AS ALL BY THE CITY OF LA
 WITHIN THE SUB PLANS.
Richard [Signature]
 12/12/12



EAST TOWNHOMES
 PLAYERS CLUB AT THE
 CANYON GOLF COURSE
 CLUBHOUSE

COUNTY OF LOS ANGELES
 W.C. WALLACE, INC.
 1077-4510-1

WV (5)

1077-4510-1